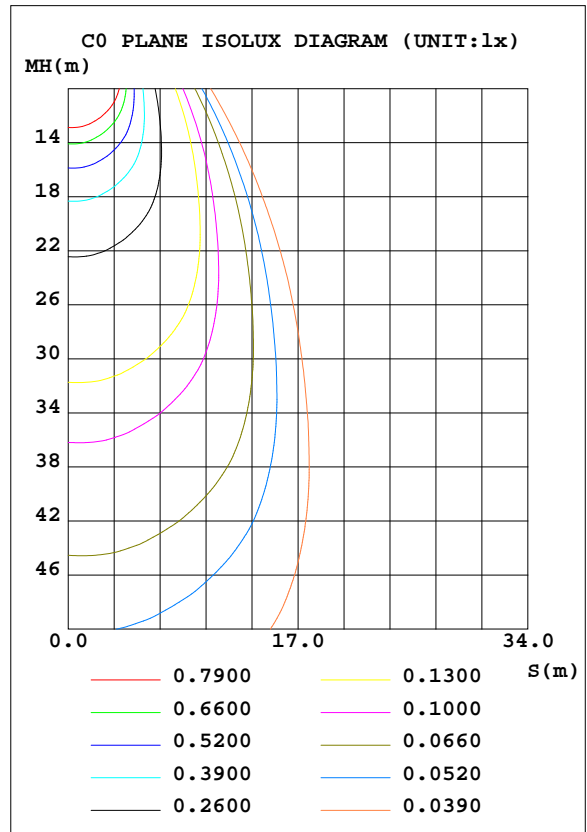
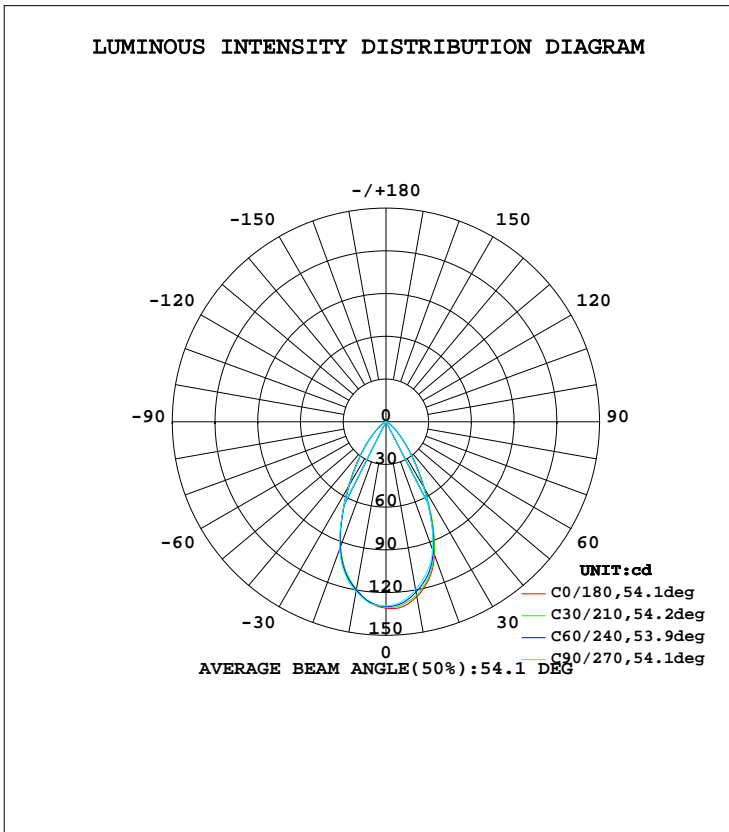


LUMINAIRE PHOTOMETRIC TEST REPORT

Test:U:24.00V I:0.0594A P:1.425W PF:1.000 Lamp Flux:118.579x1 lm		
NAME: LIGHTRAIL	TYPE:	WEIGHT:
DIM.:	SPEC.:	SERIAL No.:
MFR.: EVERFINE	SUR.:	PROTECTION ANGLE:

DATA OF LAMP		PHOTOMETRIC DATA Eff: 83.19 lm/W			
MODEL		I _{max} (cd)	131.3	S/MH(C0/180)	0.84
NOMINAL POWER(W)	1.5	LOR(%)	100.0	S/MH(C90/270)	0.84
RATED VOLTAGE(V)	24	TOTAL FLUX(lm)	118.58	η UP, DN(C0-180)	1.0, 49.2
NOMINAL FLUX(lm)	118.579	CIE CLASS	DIRECT	η UP, DN(C180-360)	0.6, 49.3
LAMPS INSIDE	1	η up(%)	1.5	CIBSE SHR NOM	0.75
TEST VOLTAGE(V)	24.0	η down(%)	98.5	CIBSE SHR MAX	0.85



C Range: 0 - 360DEG
 C Interval: 15.0DEG
 Test Speed: HIGH
 Temperature: 25.3DEG
 Operators: DAMIN
 Test Date: 2024-05-10

γ Range: 0 - 180DEG
 γ Interval: 1.0DEG
 Test System: EVERFINE GO-2000A_V1 SYSTEM V2.0.276
 Humidity: 65.0%
 Test Distance: 6.826m [K=1.0000]
 Remarks: 0510-POD26(60°)-24V-1.5W-830(CREE XPG2)-1

ZONAL FLUX DIAGRAM

ZONAL FLUX DIAGRAM:

γ	C0	C45	C90	C135	C180	C225	C270	C315	γ	Φ zone	Φ total	lum, lamp
10	124.7	122.8	119.6	117.4	119.9	119.4	121.1	122.8	0- 10	11.96	11.96	10.1,10.1
20	99.44	98.21	95.79	93.33	93.61	93.46	95.24	97.70	10- 20	30.80	42.76	36.1,36.1
30	53.78	54.13	52.74	52.59	53.37	51.39	52.21	54.00	20- 30	33.80	76.56	64.6,64.6
40	23.25	23.35	22.55	22.04	23.73	23.02	22.91	23.27	30- 40	22.60	99.15	83.6,83.6
50	8.132	8.365	7.911	7.738	8.458	8.083	8.006	7.910	40- 50	11.08	110.2	93,93
60	2.561	2.584	2.330	2.275	2.575	2.297	2.208	2.358	50- 60	4.139	114.4	96.5,96.5
70	1.106	1.062	1.039	0.9538	1.056	0.9810	0.9424	1.005	60- 70	1.540	115.9	97.8,97.8
80	0.4076	0.3673	0.2747	0.3002	0.3850	0.3091	0.2041	0.3253	70- 80	0.7000	116.6	98.3,98.3
90	0.0253	0.0282	0.0285	0.0283	0.0220	0.0348	0.0189	0.0409	80- 90	0.1314	116.7	98.5,98.5
100	0.0189	0.0315	0.0251	0.0377	0.0283	0.0251	0.0252	0.0220	90-100	0.0280	116.8	98.5,98.5
110	0.0345	0.0472	0.0283	0.0566	0.0440	0.0251	0.0409	0.0220	100-110	0.0334	116.8	98.5,98.5
120	0.0847	0.1008	0.0721	0.1038	0.0723	0.0439	0.0755	0.0408	110-120	0.0512	116.9	98.5,98.5
130	0.2451	0.2489	0.2038	0.2585	0.1575	0.1351	0.1604	0.1226	120-130	0.1088	117.0	98.6,98.6
140	0.5845	0.5665	0.5175	0.5921	0.3432	0.3173	0.3489	0.3048	130-140	0.2326	117.2	98.8,98.8
150	1.109	1.079	1.020	1.135	0.6321	0.6122	0.6508	0.5965	140-150	0.3961	117.6	99.2,99.2
160	1.628	1.597	1.527	1.641	0.9558	0.8861	0.9053	0.8422	150-160	0.4880	118.1	99.6,99.6
170	1.710	1.672	1.607	1.672	1.094	1.003	0.9995	0.9552	160-170	0.3694	118.5	99.9,99.9
180	1.499	1.446	1.399	1.392	1.496	1.443	1.395	1.367	170-180	0.1289	118.6	100,100
DEG	LUMINOUS INTENSITY:cd									UNIT:lm		

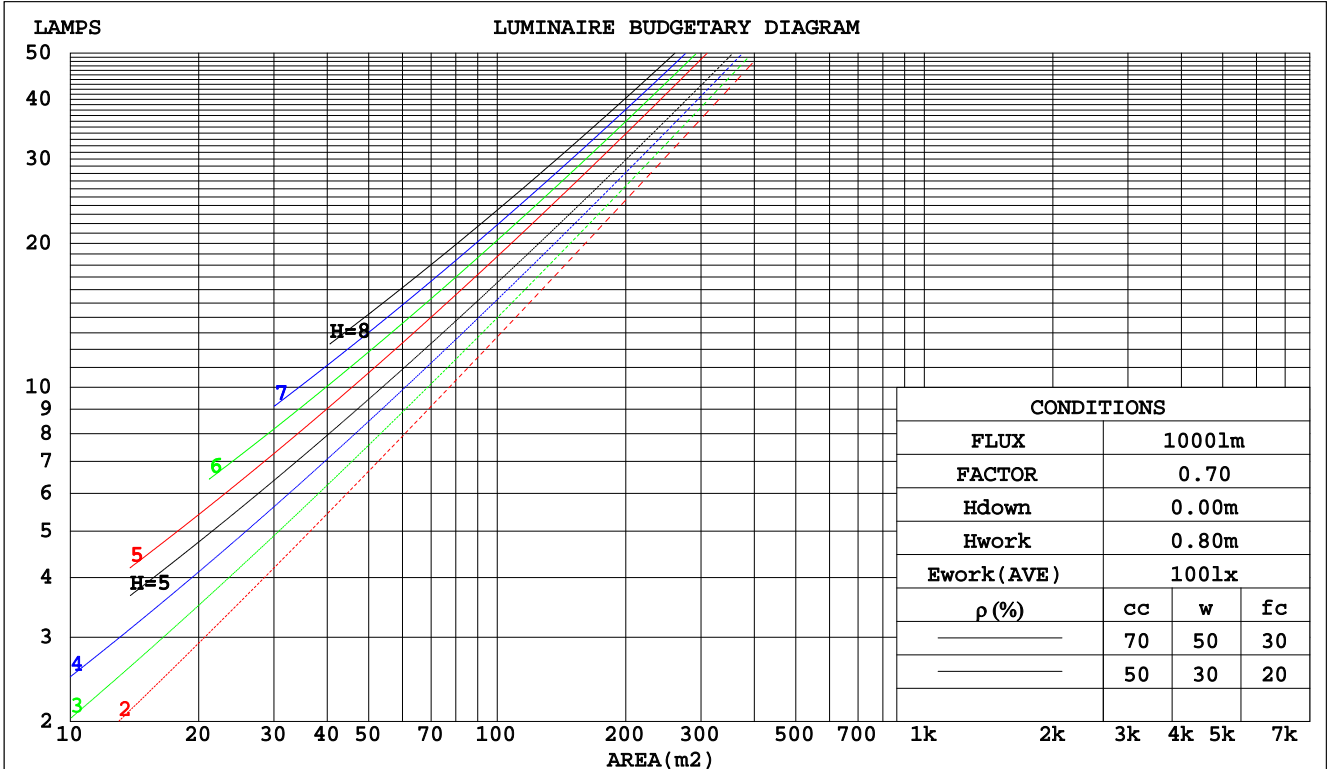
C Range: 0 - 360DEG
 C Interval: 15.0DEG
 Test Speed: HIGH
 Temperature:25.3DEG
 Operators:DAMIN
 Test Date:2024-05-10

γ Range: 0 - 180DEG
 γ Interval: 1.0DEG
 Test System:EVERFINE GO-2000A_V1 SYSTEM V2.0.276
 Humidity:65.0%
 Test Distance:6.826m [K=1.0000]
 Remarks: 0510-POD26(60°)-24V-1.5W-830(CREE XPG2)-1

CU AND LUMINAIRE BUDGETARY ESTIMATE DIAGRAM

Test:U:24.00V I:0.0594A P:1.425W PF:1.000 Lamp Flux:118.579x1 lm		
NAME: LIGHTRAIL	TYPE:	WEIGHT:
DIM.:	SPEC.:	SERIAL No.:
MFR.: EVERFINE	SUR.:	PROTECTION ANGLE:

pcc	80%			70%			50%			30%			10%			0
	50%	30%	10%	50%	30%	10%	50%	30%	10%	50%	30%	10%	50%	30%	10%	0
pw																0
pfc	20%			20%			20%			20%			20%			0
RCR	RCR:Room Cavity Ratio															
	Coefficients of Utilization(CU)															
0.0	1.19	1.19	1.19	1.16	1.16	1.16	1.10	1.10	1.10	1.05	1.05	1.05	1.01	1.01	1.01	.98
1.0	1.10	1.07	1.05	1.07	1.05	1.03	1.03	1.01	.99	.99	.98	.96	.95	.94	.93	.91
2.0	1.01	.97	.93	.99	.96	.92	.96	.93	.90	.93	.90	.88	.90	.88	.86	.84
3.0	.94	.88	.84	.92	.87	.83	.89	.85	.82	.87	.83	.80	.84	.81	.79	.77
4.0	.87	.81	.77	.86	.80	.76	.83	.79	.75	.81	.77	.74	.79	.76	.73	.71
5.0	.81	.75	.70	.80	.74	.70	.78	.73	.69	.76	.72	.68	.75	.71	.68	.66
6.0	.76	.70	.65	.75	.69	.65	.73	.68	.64	.72	.67	.64	.70	.66	.63	.61
7.0	.71	.65	.60	.70	.64	.60	.69	.63	.60	.67	.63	.59	.66	.62	.59	.57
8.0	.67	.60	.56	.66	.60	.56	.65	.59	.56	.64	.59	.55	.63	.58	.55	.54
9.0	.63	.57	.53	.62	.56	.52	.61	.56	.52	.60	.55	.52	.59	.55	.52	.50
10.0	.59	.53	.49	.59	.53	.49	.58	.53	.49	.57	.52	.49	.56	.52	.49	.47



C Range: 0 - 360DEG
 C Interval: 15.0DEG
 Test Speed: HIGH
 Temperature: 25.3DEG
 Operators: DAMIN
 Test Date: 2024-05-10

γ Range: 0 - 180DEG
 γ Interval: 1.0DEG
 Test System: EVERFINE GO-2000A_V1 SYSTEM V2.0.276
 Humidity: 65.0%
 Test Distance: 6.826m [K=1.0000]
 Remarks: 0510-POD26(60°)-24V-1.5W-830(CREE XPG2)-1

WEC AND CCEC

Test:U:24.00V I:0.0594A P:1.425W PF:1.000 Lamp Flux:118.579x1 lm		
NAME: LIGHTRAIL	TYPE:	WEIGHT:
DIM.:	SPEC.:	SERIAL No.:
MFR.: EVERFINE	SUR.:	PROTECTION ANGLE:

ρcc	80%			70%			50%			30%			10%			0
ρw	50%	30%	10%	50%	30%	10%	50%	30%	10%	50%	30%	10%	50%	30%	10%	0
ρfc	20%			20%			20%			20%			20%			0
RCR	RCR:Room Cavity Ratio						Wall Exitance Coefficients(WEC)									
0.0																
1.0	.191	.109	.034	.184	.105	.033	.171	.098	.031	.158	.091	.029	.147	.085	.027	
2.0	.184	.101	.031	.178	.098	.030	.166	.092	.029	.156	.087	.027	.146	.082	.026	
3.0	.175	.093	.028	.170	.091	.027	.160	.087	.026	.150	.082	.025	.142	.079	.024	
4.0	.166	.086	.025	.162	.085	.025	.153	.081	.024	.145	.078	.023	.137	.075	.023	
5.0	.158	.080	.023	.154	.079	.023	.146	.076	.022	.139	.073	.022	.132	.071	.021	
6.0	.150	.075	.022	.146	.074	.021	.140	.072	.021	.133	.069	.020	.127	.067	.020	
7.0	.143	.071	.020	.140	.070	.020	.134	.068	.019	.128	.066	.019	.123	.064	.019	
8.0	.136	.067	.019	.133	.066	.019	.128	.064	.018	.123	.062	.018	.118	.061	.018	
9.0	.130	.063	.018	.128	.062	.017	.123	.061	.017	.118	.059	.017	.114	.058	.017	
10.0	.124	.060	.017	.122	.059	.016	.118	.058	.016	.113	.056	.016	.109	.055	.016	

ρcc	80%			70%			50%			30%			10%			0
ρw	50%	30%	10%	50%	30%	10%	50%	30%	10%	50%	30%	10%	50%	30%	10%	0
ρfc	20%			20%			20%			20%			20%			0
RCR	RCR:Room Cavity Ratio						Ceiling Cavity Exitance Coefficients(CCEC)									
0.0	.202	.202	.202	.173	.173	.173	.118	.118	.118	.068	.068	.068	.022	.022	.022	
1.0	.184	.169	.156	.157	.145	.134	.108	.100	.093	.062	.058	.054	.020	.019	.017	
2.0	.170	.144	.123	.145	.124	.106	.100	.086	.074	.057	.050	.043	.018	.016	.014	
3.0	.158	.126	.100	.136	.108	.087	.093	.075	.061	.054	.044	.036	.017	.014	.012	
4.0	.148	.111	.083	.127	.096	.072	.088	.067	.051	.051	.039	.030	.016	.013	.010	
5.0	.140	.100	.070	.120	.086	.061	.083	.060	.043	.048	.035	.026	.015	.012	.008	
6.0	.133	.091	.060	.114	.079	.053	.079	.055	.037	.046	.032	.022	.015	.011	.007	
7.0	.126	.083	.053	.109	.072	.046	.075	.051	.033	.044	.030	.019	.014	.010	.006	
8.0	.121	.077	.047	.104	.067	.041	.072	.047	.029	.042	.028	.017	.014	.009	.006	
9.0	.116	.072	.043	.100	.063	.037	.069	.044	.026	.040	.026	.016	.013	.009	.005	
10.0	.111	.068	.039	.096	.059	.034	.066	.041	.024	.039	.024	.014	.013	.008	.005	

C Range: 0 - 360DEG
 C Interval: 15.0DEG
 Test Speed: HIGH
 Temperature:25.3DEG
 Operators:DAMIN
 Test Date:2024-05-10

γ Range: 0 - 180DEG
 γ Interval: 1.0DEG
 Test System:EVERFINE GO-2000A_V1 SYSTEM V2.0.276
 Humidity:65.0%
 Test Distance:6.826m [K=1.0000]
 Remarks: 0510-POD26(60°)-24V-1.5W-830(CREE XPG2)-1

Uncorrected UGR Table

Test:U:24.00V I:0.0594A P:1.425W PF:1.000 Lamp Flux:118.579x1 lm										
NAME: LIGHTRAIL					TYPE:			WEIGHT:		
DIM.:					SPEC.:			SERIAL No.:		
MFR.: EVERFINE					SUR.:			PROTECTION ANGLE:		
ceiling/cavity	0.7	0.7	0.5	0.5	0.3	0.7	0.7	0.5	0.5	0.3
walls	0.5	0.3	0.5	0.3	0.3	0.5	0.3	0.5	0.3	0.3
working plane	0.2	0.2	0.2	0.2	0.2	0.2	0.2	0.2	0.2	0.2
Room dimensions	Viewed crosswise					Viewed endwise				
x = 2H y = 2H	20.6	21.6	20.9	21.8	22.0	20.6	21.6	20.8	21.8	22.0
3H	20.6	21.6	20.9	21.8	22.0	20.5	21.5	20.8	21.7	21.9
4H	20.6	21.5	20.9	21.7	22.0	20.5	21.4	20.8	21.6	21.9
6H	20.6	21.4	20.9	21.7	22.0	20.5	21.3	20.8	21.5	21.8
8H	20.6	21.3	20.9	21.6	21.9	20.4	21.2	20.8	21.5	21.8
12H	20.5	21.3	20.9	21.6	21.9	20.4	21.1	20.7	21.4	21.7
4H 2H	20.5	21.4	20.8	21.6	21.9	20.4	21.3	20.7	21.5	21.8
3H	20.5	21.3	20.9	21.6	21.9	20.5	21.2	20.8	21.5	21.8
4H	20.6	21.3	20.9	21.6	21.9	20.5	21.1	20.8	21.5	21.8
6H	20.6	21.2	21.0	21.5	21.9	20.4	21.0	20.8	21.4	21.8
8H	20.6	21.1	21.0	21.5	21.9	20.4	20.9	20.8	21.3	21.7
12H	20.5	21.0	21.0	21.4	21.8	20.4	20.9	20.8	21.3	21.7
8H 4H	20.5	21.0	20.9	21.4	21.8	20.4	20.9	20.8	21.3	21.7
6H	20.5	21.0	21.0	21.4	21.8	20.4	20.8	20.8	21.2	21.7
8H	20.5	20.9	21.0	21.4	21.8	20.3	20.7	20.8	21.2	21.7
12H	20.5	20.8	21.0	21.3	21.8	20.3	20.6	20.8	21.1	21.6
12H 4H	20.4	20.9	20.9	21.3	21.8	20.3	20.8	20.8	21.2	21.7
6H	20.5	20.9	21.0	21.3	21.8	20.3	20.7	20.8	21.2	21.6
8H	20.5	20.8	21.0	21.3	21.8	20.3	20.6	20.8	21.1	21.6
Variations with the observer position at spacings:										
S = 1.0H	+ 1.9 / - 3.6					+ 1.9 / - 4.0				
1.5H	+ 2.9 / - 3.0					+ 2.8 / - 3.2				
2.0H	+ 3.8 / - 3.3					+ 3.9 / - 3.6				

CIE Pub.117 Corrected 118.6 lm Total Lamp Luminous Flux. (8log(F/F0) = -7.4)

C Range: 0 - 360DEG
 C Interval: 15.0DEG
 Test Speed: HIGH
 Temperature: 25.3DEG
 Operators: DAMIN
 Test Date: 2024-05-10

γ Range: 0 - 180DEG
 γ Interval: 1.0DEG
 Test System: EVERFINE GO-2000A_V1 SYSTEM V2.0.276
 Humidity: 65.0%
 Test Distance: 6.826m [K=1.0000]
 Remarks: 0510-POD26(60°)-24V-1.5W-830(CREE XPG2)-1

UTILIZATION FACTORS TABLE

Test:U:24.00V I:0.0594A P:1.425W PF:1.000 Lamp Flux:118.579x1 lm		
NAME: LIGHTRAIL	TYPE:	WEIGHT:
DIM.:	SPEC.:	SERIAL No.:
MFR.: EVERFINE	SUR.:	PROTECTION ANGLE:

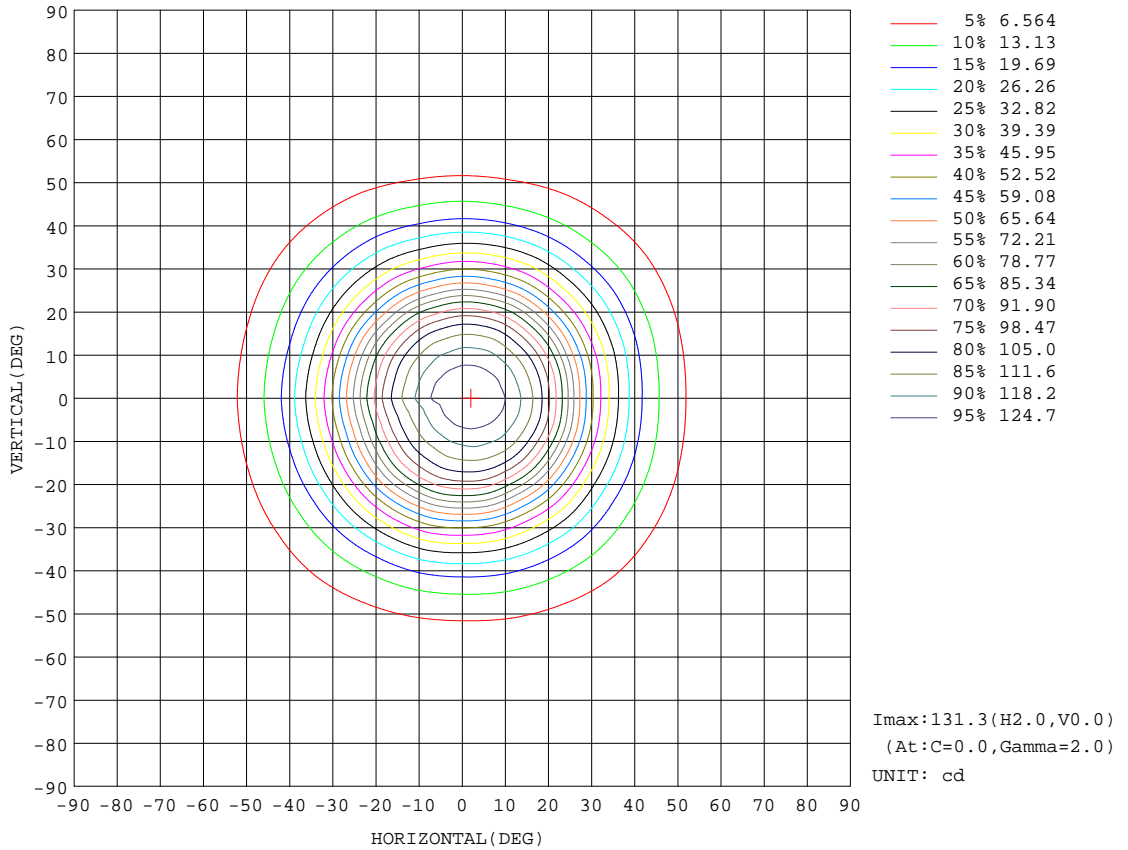
REFLECTANCE										
Ceiling	0.8	0.8	0.8	0.7	0.7	0.7	0.5	0.5	0.5	0
Walls	0.7	0.5	0.3	0.7	0.5	0.3	0.7	0.5	0.3	0
Working plane	0.2	0.2	0.2	0.2	0.2	0.2	0.2	0.2	0.2	0
ROOM INDEX	UTILIZATION FACTORS(PERCENT) $k(RI) \times RCR = 5$									
k = 0.60	81	74	69	81	74	69	80	73	69	65
0.80	89	83	78	89	82	78	87	81	78	73
1.00	95	88	84	94	88	84	92	88	83	79
1.25	100	94	90	98	93	89	96	92	88	83
1.50	103	97	93	101	96	93	99	95	92	86
2.00	106	101	98	105	100	97	102	98	95	89
2.50	108	104	100	106	102	99	103	100	97	91
3.00	110	106	103	108	105	102	104	102	99	92
4.00	112	109	107	110	107	105	106	104	102	94
5.00	114	111	109	111	109	107	107	105	104	95
ROOM INDEX	UF(total)									Direct
According to DIN EN 13032-2 2004			Suspended				SHRNOM = 1.25			

C Range: 0 - 360DEG
 C Interval: 15.0DEG
 Test Speed: HIGH
 Temperature:25.3DEG
 Operators:DAMIN
 Test Date:2024-05-10

γ Range: 0 - 180DEG
 γ Interval: 1.0DEG
 Test System:EVERFINE GO-2000A_V1 SYSTEM V2.0.276
 Humidity:65.0%
 Test Distance:6.826m [K=1.0000]
 Remarks: 0510-POD26(60°)-24V-1.5W-830(CREE XPG2)-1

ISOCANDELA DIAGRAM

Test:U:24.00V I:0.0594A P:1.425W PF:1.000 Lamp Flux:118.579x1 lm		
NAME: LIGHTRAIL	TYPE:	WEIGHT:
DIM.:	SPEC.:	SERIAL No.:
MFR.: EVERFINE	SUR.:	PROTECTION ANGLE:

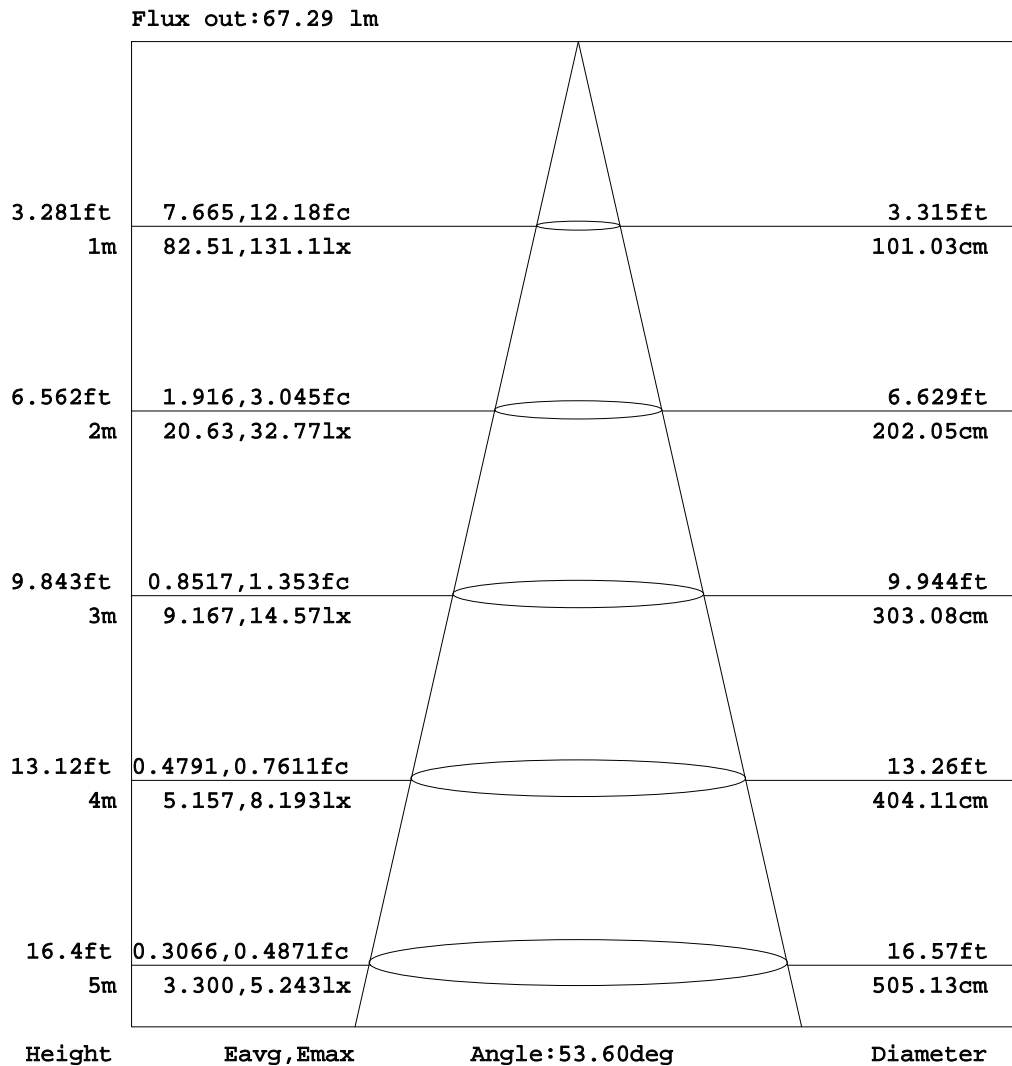


C Range: 0 - 360DEG
 C Interval: 15.0DEG
 Test Speed: HIGH
 Temperature: 25.3DEG
 Operators: DAMIN
 Test Date: 2024-05-10

γ Range: 0 - 180DEG
 γ Interval: 1.0DEG
 Test System: EVERFINE GO-2000A_V1 SYSTEM V2.0.276
 Humidity: 65.0%
 Test Distance: 6.826m [K=1.0000]
 Remarks: 0510-POD26(60°)-24V-1.5W-830(CREE XPG2)-1

AAI Figure

Test:U:24.00V I:0.0594A P:1.425W PF:1.000 Lamp Flux:118.579x1 lm		
NAME: LIGHTRAIL	TYPE:	WEIGHT:
DIM.:	SPEC.:	SERIAL No.:
MFR.: EVERFINE	SUR.:	PROTECTION ANGLE:



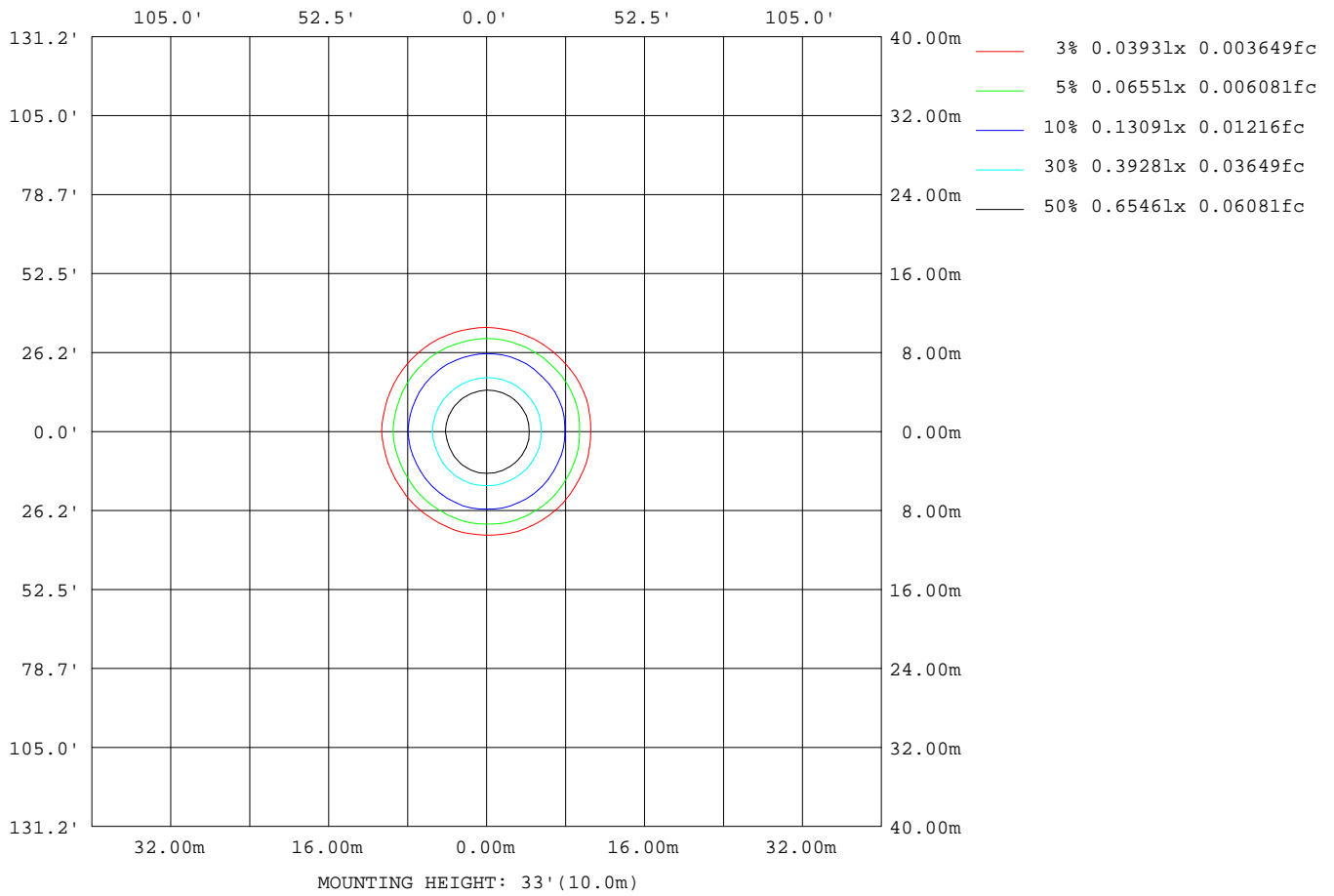
Note:The Curves indicate the illuminated area and the average illumination when the luminaire is at different distance.

C Range: 0 - 360DEG
 C Interval: 15.0DEG
 Test Speed: HIGH
 Temperature:25.3DEG
 Operators:DAMIN
 Test Date:2024-05-10

γ Range: 0 - 180DEG
 γ Interval: 1.0DEG
 Test System:EVERFINE GO-2000A_V1 SYSTEM V2.0.276
 Humidity:65.0%
 Test Distance:6.826m [K=1.0000]
 Remarks: 0510-POD26(60°)-24V-1.5W-830(CREE XPG2)-1

ISOLUX DIAGRAM

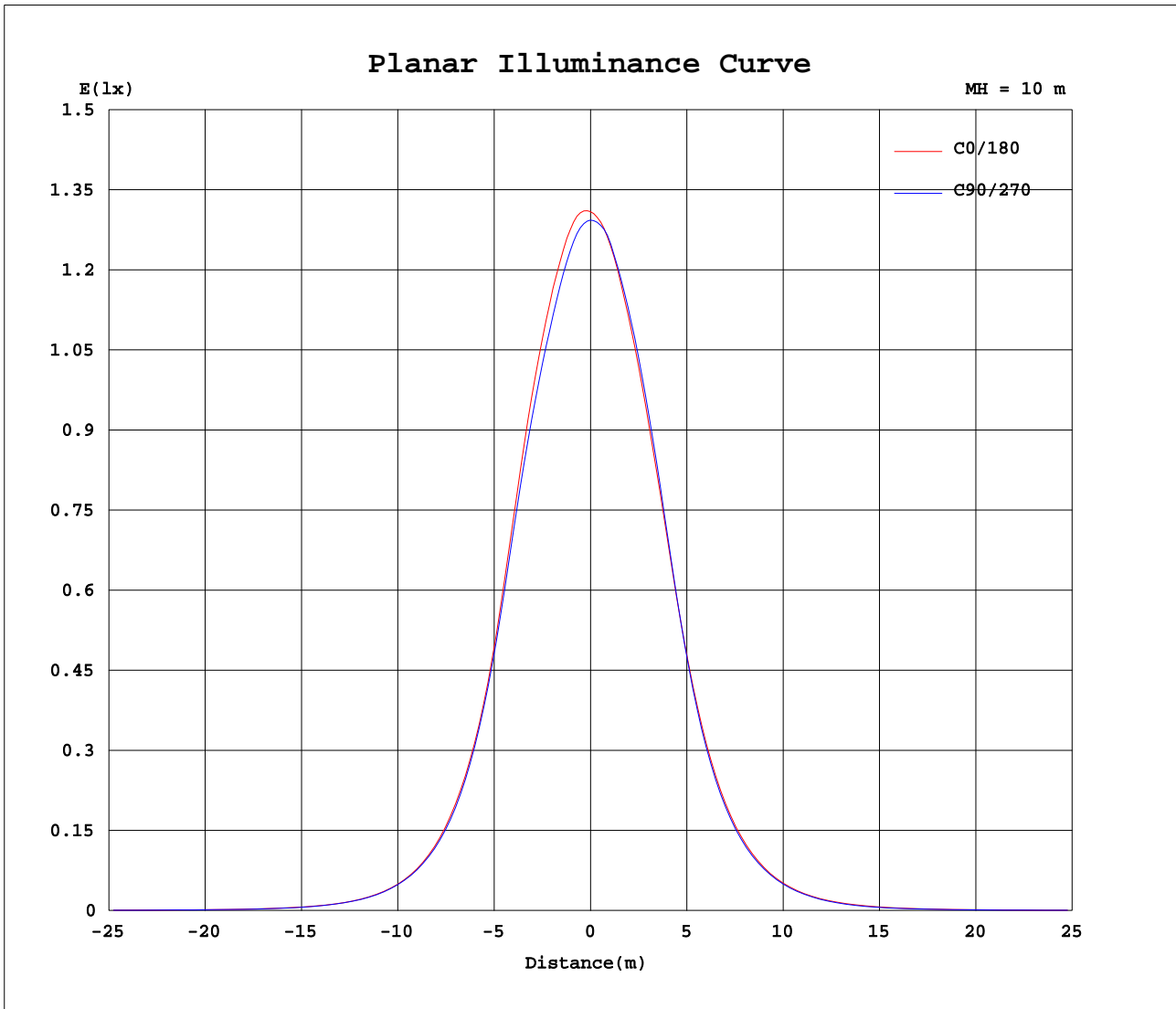
Test:U:24.00V I:0.0594A P:1.425W PF:1.000 Lamp Flux:118.579x1 lm		
NAME: LIGHTRAIL	TYPE:	WEIGHT:
DIM.:	SPEC.:	SERIAL No.:
MFR.: EVERFINE	SUR.:	PROTECTION ANGLE:



C Range: 0 - 360DEG
 C Interval: 15.0DEG
 Test Speed: HIGH
 Temperature: 25.3DEG
 Operators: DAMIN
 Test Date: 2024-05-10

γ Range: 0 - 180DEG
 γ Interval: 1.0DEG
 Test System: EVERFINE GO-2000A_V1 SYSTEM V2.0.276
 Humidity: 65.0%
 Test Distance: 6.826m [K=1.0000]
 Remarks: 0510-POD26(60°)-24V-1.5W-830(CREE XPG2)-1

Planar Illuminance Curve



C Range: 0 - 360DEG
 C Interval: 15.0DEG
 Test Speed: HIGH
 Temperature: 25.3DEG
 Operators: DAMIN
 Test Date: 2024-05-10

γ Range: 0 - 180DEG
 γ Interval: 1.0DEG
 Test System: EVERFINE GO-2000A_V1 SYSTEM V2.0.276
 Humidity: 65.0%
 Test Distance: 6.826m [K=1.0000]
 Remarks: 0510-POD26(60°)-24V-1.5W-830(CREE XPG2)-1

LUMINOUS DISTRIBUTION INTENSITY DATA

Test:U:24.00V I:0.0594A P:1.425W PF:1.000 Lamp Flux:118.579x1 lm		
NAME: LIGHTRAIL	TYPE:	WEIGHT:
DIM.:	SPEC.:	SERIAL No.:
MFR.: EVERFINE	SUR.:	PROTECTION ANGLE:

Table--1

UNIT: cd

C(DEG) γ (DEG)	0	15	30	45	60	75	90	105	120	135	150	165	180	195	210	225	240	255	270
0	131	130	130	130	130	130	129	129	129	129	129	129	131	130	130	130	130	130	129
5	130	130	129	129	128	127	127	126	126	126	125	125	128	127	127	127	127	127	128
10	125	124	124	123	122	121	120	119	118	117	117	117	120	119	120	119	120	120	121
15	115	115	114	114	112	111	110	109	108	107	106	106	109	108	109	109	110	110	111
20	99.4	100	98.7	98.2	97.0	96.9	95.8	95.6	94.3	93.3	91.3	91.0	93.6	92.8	93.6	93.5	94.1	93.7	95.2
25	76.6	77.3	76.5	76.1	74.7	75.3	74.4	74.8	73.9	73.5	71.7	70.9	73.3	72.8	72.9	71.8	72.4	71.9	73.3
30	53.8	54.4	53.9	54.1	53.1	53.4	52.7	53.5	52.9	52.6	51.8	51.7	53.4	52.4	52.2	51.4	51.9	51.1	52.2
35	36.4	36.4	35.8	36.5	35.8	35.8	35.2	36.1	35.3	35.0	34.6	35.2	36.5	35.4	35.4	35.3	35.4	34.7	35.4
40	23.2	23.3	22.8	23.4	23.1	23.1	22.6	22.8	22.1	22.0	21.9	22.5	23.7	22.9	23.1	23.0	23.2	22.5	22.9
45	14.0	14.2	14.0	14.3	14.2	14.2	13.7	13.7	13.3	13.3	13.2	13.7	14.5	14.0	14.2	14.1	14.2	13.9	14.1
50	8.13	8.27	8.16	8.36	8.23	8.24	7.91	7.91	7.70	7.74	7.57	7.90	8.46	8.19	8.18	8.08	8.18	7.97	8.01
55	4.51	4.61	4.54	4.63	4.46	4.47	4.28	4.31	4.19	4.21	4.07	4.29	4.66	4.45	4.42	4.29	4.34	4.13	4.20
60	2.56	2.63	2.57	2.58	2.45	2.45	2.33	2.34	2.24	2.28	2.24	2.36	2.57	2.45	2.42	2.30	2.30	2.17	2.21
65	1.63	1.64	1.60	1.56	1.53	1.54	1.50	1.46	1.40	1.40	1.40	1.46	1.56	1.53	1.48	1.43	1.39	1.36	1.39
70	1.11	1.10	1.08	1.06	1.06	1.05	1.04	1.01	0.98	0.95	0.98	1.00	1.06	1.05	1.00	0.98	0.95	0.94	0.94
75	0.74	0.73	0.73	0.71	0.70	0.67	0.66	0.65	0.64	0.62	0.65	0.67	0.70	0.69	0.65	0.64	0.59	0.57	0.58
80	0.41	0.40	0.40	0.37	0.34	0.29	0.27	0.27	0.29	0.30	0.33	0.35	0.39	0.36	0.33	0.31	0.25	0.23	0.20
85	0.12	0.10	0.12	0.09	0.11	0.08	0.11	0.08	0.10	0.07	0.09	0.07	0.08	0.10	0.07	0.09	0.07	0.09	0.07
90	0.03	0.03	0.04	0.03	0.04	0.02	0.03	0.03	0.04	0.03	0.04	0.03	0.02	0.03	0.02	0.03	0.02	0.03	0.02
95	0.02	0.03	0.03	0.03	0.03	0.02	0.03	0.03	0.03	0.03	0.03	0.03	0.02	0.02	0.03	0.03	0.03	0.02	0.02
100	0.02	0.04	0.03	0.03	0.03	0.03	0.03	0.03	0.03	0.04	0.02	0.04	0.03	0.02	0.03	0.03	0.03	0.02	0.03
105	0.02	0.04	0.03	0.04	0.03	0.04	0.03	0.04	0.03	0.04	0.03	0.04	0.04	0.02	0.03	0.03	0.03	0.02	0.04
110	0.03	0.05	0.03	0.05	0.04	0.04	0.03	0.05	0.03	0.06	0.03	0.06	0.04	0.02	0.04	0.03	0.04	0.03	0.04
115	0.05	0.07	0.05	0.07	0.05	0.06	0.04	0.07	0.04	0.08	0.05	0.08	0.05	0.03	0.06	0.03	0.05	0.04	0.06
120	0.08	0.10	0.08	0.10	0.08	0.09	0.07	0.10	0.08	0.10	0.08	0.11	0.07	0.04	0.07	0.04	0.07	0.05	0.08
125	0.14	0.17	0.14	0.16	0.13	0.14	0.13	0.15	0.13	0.16	0.14	0.18	0.10	0.08	0.10	0.08	0.10	0.08	0.10
130	0.25	0.26	0.23	0.25	0.22	0.23	0.20	0.24	0.22	0.26	0.24	0.27	0.16	0.13	0.16	0.14	0.15	0.13	0.16
135	0.39	0.40	0.36	0.38	0.35	0.35	0.34	0.37	0.36	0.40	0.39	0.42	0.23	0.21	0.23	0.20	0.24	0.21	0.24
140	0.58	0.58	0.55	0.57	0.53	0.53	0.52	0.54	0.55	0.59	0.59	0.62	0.34	0.31	0.34	0.32	0.34	0.32	0.35
145	0.83	0.82	0.80	0.80	0.76	0.75	0.75	0.78	0.80	0.84	0.85	0.88	0.48	0.45	0.47	0.45	0.48	0.46	0.49
150	1.11	1.10	1.08	1.08	1.03	1.03	1.02	1.05	1.08	1.13	1.15	1.18	0.63	0.61	0.63	0.61	0.64	0.62	0.65
155	1.40	1.39	1.38	1.37	1.32	1.31	1.31	1.35	1.37	1.43	1.44	1.48	0.80	0.77	0.79	0.77	0.80	0.78	0.80
160	1.63	1.62	1.60	1.60	1.55	1.55	1.53	1.57	1.58	1.64	1.65	1.71	0.96	0.90	0.91	0.89	0.91	0.88	0.91
165	1.73	1.74	1.71	1.67	1.64	1.64	1.62	1.61	1.65	1.69	1.73	1.77	1.05	0.98	0.98	0.95	0.96	0.93	0.95
170	1.71	1.70	1.73	1.67	1.64	1.61	1.61	1.61	1.65	1.67	1.72	1.71	1.09	1.03	1.05	1.00	1.02	0.99	1.00
175	1.62	1.58	1.61	1.57	1.57	1.51	1.53	1.51	1.54	1.52	1.56	1.56	1.24	1.19	1.20	1.15	1.17	1.13	1.15
180	1.50	1.46	1.46	1.45	1.43	1.41	1.40	1.39	1.39	1.39	1.41	1.40	1.50	1.46	1.46	1.44	1.43	1.40	1.40

C Range: 0 - 360DEG
 C Interval: 15.0DEG
 Test Speed: HIGH
 Temperature:25.3DEG
 Operators:DAMIN
 Test Date:2024-05-10

γ Range: 0 - 180DEG
 γ Interval: 1.0DEG
 Test System:EVERFINE GO-2000A_V1 SYSTEM V2.0.276
 Humidity:65.0%
 Test Distance:6.826m [K=1.0000]
 Remarks: 0510-POD26(60°)-24V-1.5W-830(CREE XPG2)-1

LUMINOUS DISTRIBUTION INTENSITY DATA

Test:U:24.00V I:0.0594A P:1.425W PF:1.000 Lamp Flux:118.579x1 lm		
NAME: LIGHTRAIL	TYPE:	WEIGHT:
DIM.:	SPEC.:	SERIAL No.:
MFR.: EVERFINE	SUR.:	PROTECTION ANGLE:

Table--2

UNIT: cd

C(DEG) γ (DEG)	285	300	315	330	345														
0	129	129	129	129	129														
5	128	128	129	129	129														
10	122	122	123	124	124														
15	112	113	113	114	114														
20	96.0	97.3	97.7	99.0	99.6														
25	73.9	75.7	75.9	77.1	77.3														
30	52.6	53.9	54.0	54.9	54.9														
35	36.0	36.8	36.4	37.3	37.4														
40	23.1	23.4	23.3	24.0	24.1														
45	13.9	13.9	13.9	14.5	14.5														
50	7.86	7.98	7.91	8.28	8.39														
55	4.20	4.32	4.28	4.52	4.61														
60	2.23	2.37	2.36	2.54	2.60														
65	1.39	1.44	1.48	1.56	1.62														
70	0.97	0.98	1.00	1.04	1.10														
75	0.60	0.62	0.66	0.68	0.74														
80	0.24	0.27	0.33	0.35	0.41														
85	0.09	0.07	0.10	0.09	0.13														
90	0.03	0.02	0.04	0.03	0.04														
95	0.02	0.02	0.02	0.02	0.02														
100	0.02	0.03	0.02	0.03	0.02														
105	0.02	0.03	0.02	0.03	0.02														
110	0.03	0.04	0.02	0.04	0.02														
115	0.03	0.05	0.03	0.05	0.04														
120	0.04	0.07	0.04	0.06	0.04														
125	0.08	0.10	0.08	0.10	0.08														
130	0.14	0.15	0.12	0.14	0.13														
135	0.21	0.22	0.19	0.22	0.20														
140	0.32	0.33	0.30	0.32	0.30														
145	0.46	0.47	0.44	0.46	0.44														
150	0.62	0.62	0.60	0.62	0.59														
155	0.76	0.77	0.74	0.76	0.74														
160	0.86	0.87	0.84	0.86	0.85														
165	0.90	0.92	0.90	0.93	0.92														
170	0.96	0.98	0.96	0.99	0.97														
175	1.11	1.12	1.10	1.13	1.12														
180	1.37	1.39	1.37	1.40	1.40														

C Range: 0 - 360DEG
 C Interval: 15.0DEG
 Test Speed: HIGH
 Temperature:25.3DEG
 Operators:DAMIN
 Test Date:2024-05-10

γ Range: 0 - 180DEG
 γ Interval: 1.0DEG
 Test System:EVERFINE GO-2000A_V1 SYSTEM V2.0.276
 Humidity:65.0%
 Test Distance:6.826m [K=1.0000]
 Remarks: 0510-POD26(60°)-24V-1.5W-830(CREE XPG2)-1