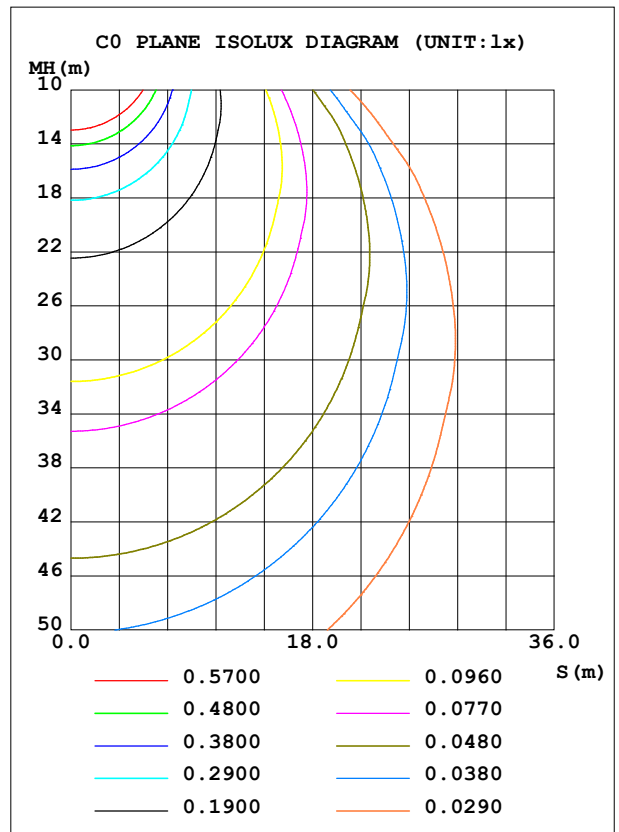
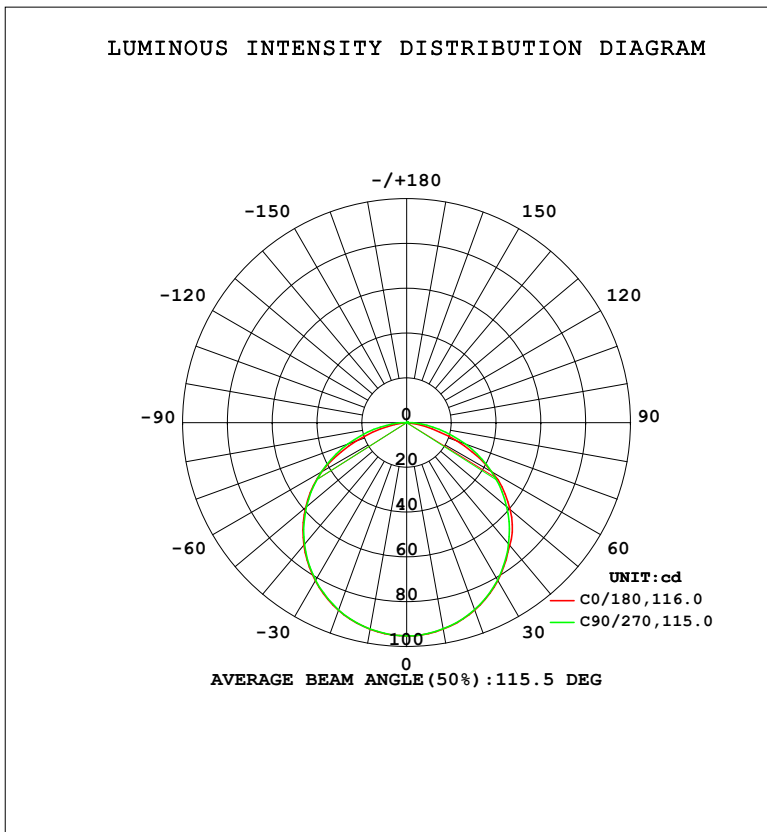


LUMINAIRE PHOTOMETRIC TEST REPORT

NAME: Blackline 1414 profile 1m + BL68.4K	TYPE:	WEIGHT:
SPEC.:	DIM.:	SERIAL No.:
MFR.:Lightrail	SUR.: 0.08*1	Shielding Angle:

DATA OF LAMP		PHOTOMETRIC DATA				Eff: 38.77 lm/W
MODEL	4000K	I _{max} (cd)	95.25	S/MH (C0/180)	1.27	
NOMINAL POWER (W)	6.8	LOR (%)	100.0	S/MH (C90/270)	1.27	
RATED VOLTAGE (V)	24	TOTAL FLUX (lm)	281.61	η UP, DN (C0-180)	0.3, 49.8	
NOMINAL FLUX (lm)	281.581	CIE CLASS	DIRECT	η UP, DN (C180-360)	0.3, 49.7	
LAMPS INSIDE	1	η up (%)	0.5	CIBSE SHR NOM	1.25	
TEST VOLTAGE (V)	24	η down (%)	99.5	CIBSE SHR MAX	1.35	



C Range: 0 - 360DEG
 C Interval: 22.5DEG
 Test Speed: HIGH
 Temperature: 25.3DEG
 Operators:
 Test Date: 2023-04-25

γ Range: 0 - 180DEG
 γ Interval: 2.0DEG
 Test System: EVERFINE GO-2000B_V1 SYSTEM V2.00.450
 Humidity: 65.0%
 Test Distance: 6.040m [K=1.0000]
 Remarks:

ZONAL FLUX DIAGRAM

ZONAL FLUX DIAGRAM:

γ	C0	C45	C90	C135	C180	C225	C270	C315	γ	Φ zone	Φ total	%lum,lamp
10	93.67	93.47	93.49	93.62	93.72	93.65	93.59	93.53	0- 10	9.013	9.013	3.2,3.2
20	89.00	88.78	88.88	88.99	89.12	89.12	88.98	88.96	10- 20	25.87	34.89	12.4,12.4
30	81.43	81.23	81.19	81.52	81.60	81.59	81.33	81.39	20- 30	39.42	74.31	26.4,26.4
40	71.59	70.88	70.86	71.30	71.43	71.38	71.03	71.05	30- 40	47.91	122.2	43.4,43.4
50	60.31	58.28	58.30	58.77	58.87	58.82	58.43	58.41	40- 50	50.36	172.6	61.3,61.3
60	43.67	43.76	43.79	44.17	43.82	44.24	43.90	43.81	50- 60	46.22	218.8	77.7,77.7
70	23.90	27.73	27.89	28.16	23.97	28.14	27.90	27.73	60- 70	35.51	254.3	90.3,90.3
80	4.917	11.69	11.98	12.04	5.520	12.00	12.03	11.71	70- 80	20.15	274.5	97.5,97.5
90	0.0365	1.387	1.499	1.196	0.0444	1.162	1.558	1.425	80- 90	5.629	280.1	99.5,99.5
100	0.0339	0.5593	0.0499	0.1474	0.0704	0.3560	0.0657	0.4946	90-100	0.4971	280.6	99.6,99.6
110	0.0704	0.4124	0.0656	0.1237	0.1044	0.2254	0.0919	0.3840	100-110	0.2408	280.8	99.7,99.7
120	0.1069	0.2548	0.0997	0.1276	0.1331	0.1596	0.1235	0.2472	110-120	0.1670	281.0	99.8,99.8
130	0.1434	0.2075	0.1313	0.1368	0.1722	0.1681	0.1602	0.2131	120-130	0.1434	281.1	99.8,99.8
140	0.1800	0.2086	0.1706	0.1736	0.2036	0.1996	0.1917	0.2052	130-140	0.1382	281.3	99.9,99.9
150	0.2113	0.2098	0.2022	0.2078	0.2349	0.2311	0.2259	0.2315	140-150	0.1281	281.4	99.9,99.9
160	0.2322	0.2310	0.2389	0.2341	0.2635	0.2573	0.2600	0.2579	150-160	0.1071	281.5	100,100
170	0.2583	0.2547	0.2652	0.2578	0.2696	0.2704	0.2810	0.2721	160-170	0.0726	281.6	100,100
180	0.2713	0.2704	0.2810	0.2710	0.2713	0.2731	0.2810	0.2763	170-180	0.0257	281.6	100,100
DEG	LUMINOUS INTENSITY:cd									UNIT:lm		

Conical surface Flux(90deg): 152.55 lm

%lum = 54.2%

%lamp = 54.2%

Conical surface Flux(120deg): 218.8 lm

%lum = 77.7%

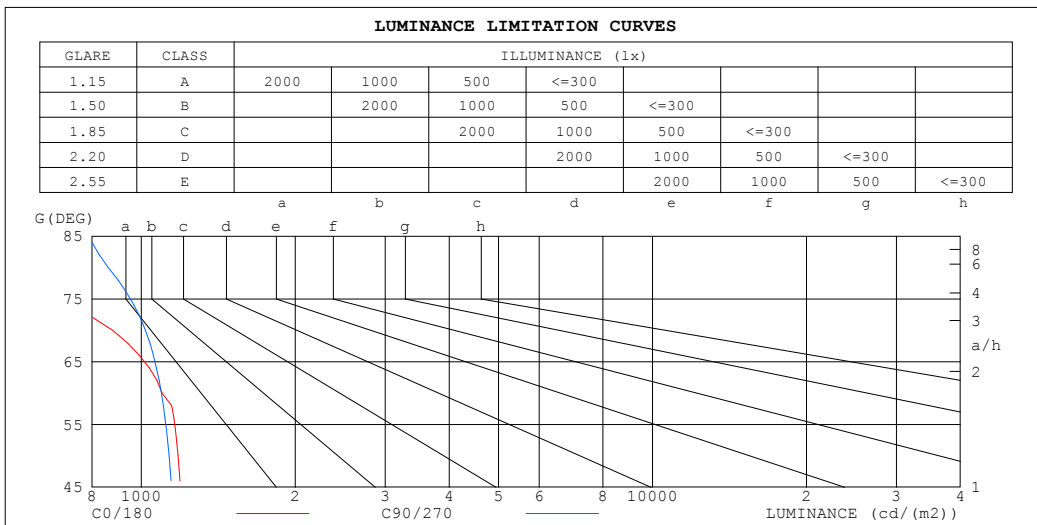
%lamp = 77.7%

C Range: 0 - 360DEG
 C Interval: 22.5DEG
 Test Speed: HIGH
 Temperature:25.3DEG
 Operators:
 Test Date:2023-04-25

γ Range: 0 - 180DEG
 γ Interval: 2.0DEG
 Test System:EVERFINE GO-2000B_V1 SYSTEM V2.00.450
 Humidity:65.0%
 Test Distance:6.040m [K=1.0000]
 Remarks:

LUMINANCE LIMITATION CURVES

NAME: Blackline 1414 profile 1m + BL68.4K	TYPE:	WEIGHT:
SPEC.:	DIM.:	SERIAL No.:
MFR.: Lightrail	SUR.: 0.08*1	Shielding Angle:



LUMINANCE cd/(m2)		
G (DEG)	C0/180	C90/270
85	21	960
80	356	862
75	758	1030
70	879	1019
65	1075	1110
60	1098	1094
55	1195	1148
50	1180	1133
45	1209	1167

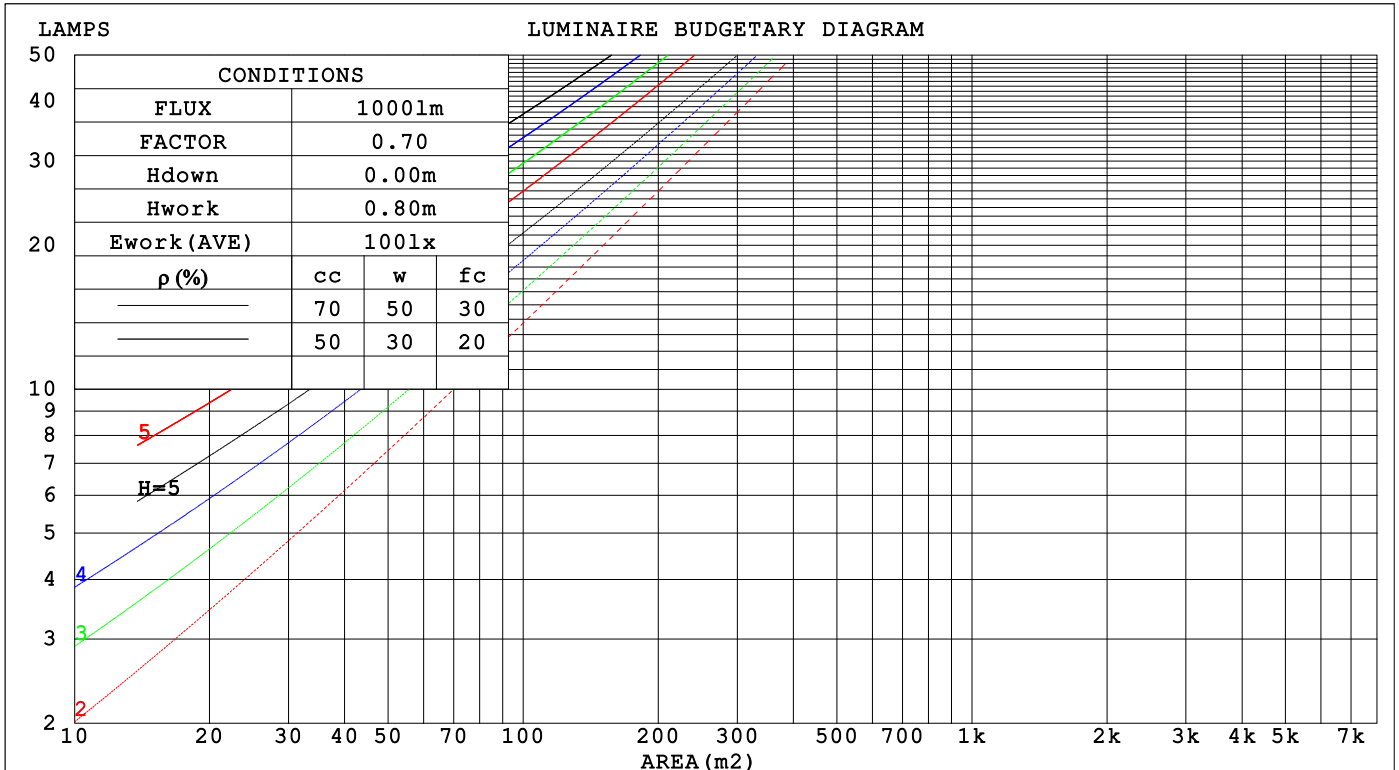
C Range: 0 - 360DEG
 C Interval: 22.5DEG
 Test Speed: HIGH
 Temperature: 25.3DEG
 Operators:
 Test Date: 2023-04-25

γ Range: 0 - 180DEG
 γ Interval: 2.0DEG
 Test System: EVERFINE GO-2000B_V1 SYSTEM V2.00.450
 Humidity: 65.0%
 Test Distance: 6.040m [K=1.0000]
 Remarks:

CU AND LUMINAIRE BUDGETARY ESTIMATE DIAGRAM

NAME: Blackline 1414 profile 1m + BL68.4K	TYPE:	WEIGHT:
SPEC.:	DIM.:	SERIAL No.:
MFR.:Lightrail	SUR.: 0.08*1	Shielding Angle:

pcc	80%			70%			50%			30%			10%			0
	50%	30%	10%	50%	30%	10%	50%	30%	10%	50%	30%	10%	50%	30%	10%	0
p _w																0
p _{fc}	20%			20%			20%			20%			20%			0
RCR	RCR:Room Cavity Ratio															
	Coefficients of Utilization(CU)															
0.0	1.19	1.19	1.19	1.16	1.16	1.16	1.11	1.11	1.11	1.06	1.06	1.06	1.02	1.02	1.02	.99
1.0	1.04	.99	.95	1.01	.97	.94	.97	.94	.91	.93	.90	.88	.89	.87	.85	.83
2.0	.90	.83	.77	.88	.82	.76	.84	.79	.74	.81	.77	.73	.78	.74	.71	.69
3.0	.79	.71	.64	.77	.70	.63	.74	.68	.62	.71	.66	.61	.69	.64	.60	.58
4.0	.70	.61	.54	.68	.60	.54	.66	.59	.53	.63	.57	.52	.61	.56	.51	.49
5.0	.62	.53	.46	.61	.52	.46	.59	.51	.46	.57	.50	.45	.55	.49	.44	.42
6.0	.56	.47	.40	.55	.46	.40	.53	.45	.40	.51	.45	.39	.50	.44	.39	.37
7.0	.51	.42	.36	.50	.41	.35	.48	.41	.35	.47	.40	.35	.45	.39	.34	.32
8.0	.46	.38	.32	.45	.37	.32	.44	.37	.31	.43	.36	.31	.42	.35	.31	.29
9.0	.42	.34	.28	.42	.34	.28	.41	.33	.28	.39	.33	.28	.38	.32	.28	.26
10.0	.39	.31	.26	.38	.31	.26	.37	.30	.26	.36	.30	.25	.36	.30	.25	.23



C Range: 0 - 360DEG
 C Interval: 22.5DEG
 Test Speed: HIGH
 Temperature:25.3DEG
 Operators:
 Test Date:2023-04-25

γ Range: 0 - 180DEG
 γ Interval: 2.0DEG
 Test System:EVERFINE GO-2000B_V1 SYSTEM V2.00.450
 Humidity:65.0%
 Test Distance:6.040m [K=1.0000]
 Remarks:

WEC AND CCEC

NAME: Blackline 1414 profile 1m + BL68.4K	TYPE:	WEIGHT:
SPEC.:	DIM.:	SERIAL No.:
MFR.:Lightrail	SUR.: 0.08*1	Shielding Angle:

ρ_{CC}	80%			70%			50%			30%			10%			0
ρ_w	50%	30%	10%	50%	30%	10%	50%	30%	10%	50%	30%	10%	50%	30%	10%	0
ρ_{fc}	20%			20%			20%			20%			20%			0
RCR	RCR:Room Cavity Ratio						Wall Exitance Coefficients (WEC)									
0.0																
1.0	.313	.178	.056	.306	.175	.055	.293	.168	.054	.280	.162	.052	.269	.156	.050	
2.0	.295	.161	.050	.288	.159	.049	.276	.154	.048	.265	.149	.047	.255	.144	.045	
3.0	.272	.145	.043	.267	.143	.043	.256	.139	.042	.246	.135	.041	.237	.131	.041	
4.0	.251	.131	.038	.246	.129	.038	.237	.126	.037	.228	.122	.037	.220	.119	.036	
5.0	.232	.118	.034	.228	.117	.034	.219	.114	.034	.211	.111	.033	.204	.109	.033	
6.0	.215	.108	.031	.211	.107	.031	.204	.104	.030	.197	.102	.030	.190	.100	.030	
7.0	.200	.099	.028	.196	.098	.028	.190	.096	.028	.183	.094	.027	.178	.092	.027	
8.0	.187	.091	.026	.184	.090	.026	.178	.089	.025	.172	.087	.025	.167	.086	.025	
9.0	.175	.085	.024	.172	.084	.024	.167	.082	.023	.162	.081	.023	.157	.080	.023	
10.0	.164	.079	.022	.162	.078	.022	.157	.077	.022	.152	.076	.022	.148	.074	.021	

ρ_{CC}	80%			70%			50%			30%			10%			0
ρ_w	50%	30%	10%	50%	30%	10%	50%	30%	10%	50%	30%	10%	50%	30%	10%	0
ρ_{fc}	20%			20%			20%			20%			20%			0
RCR	RCR:Room Cavity Ratio						Ceiling Cavity Exitance Coefficients (CCEC)									
0.0	.195	.195	.195	.166	.166	.166	.114	.114	.114	.065	.065	.065	.021	.021	.021	
1.0	.185	.160	.138	.158	.138	.119	.108	.095	.082	.062	.055	.048	.020	.018	.015	
2.0	.177	.136	.102	.151	.117	.088	.104	.081	.061	.060	.047	.036	.019	.015	.012	
3.0	.169	.119	.078	.145	.102	.068	.100	.071	.048	.057	.041	.028	.018	.013	.009	
4.0	.162	.105	.062	.139	.091	.054	.095	.063	.038	.055	.037	.023	.018	.012	.007	
5.0	.154	.095	.051	.132	.082	.045	.091	.057	.031	.053	.034	.019	.017	.011	.006	
6.0	.147	.087	.043	.126	.075	.038	.087	.052	.027	.051	.031	.016	.016	.010	.005	
7.0	.140	.080	.037	.121	.069	.033	.083	.048	.023	.048	.029	.014	.016	.009	.005	
8.0	.134	.074	.033	.115	.064	.029	.080	.045	.020	.046	.027	.012	.015	.009	.004	
9.0	.128	.069	.029	.110	.060	.026	.076	.042	.018	.044	.025	.011	.014	.008	.004	
10.0	.122	.065	.027	.105	.056	.023	.073	.040	.017	.042	.023	.010	.014	.008	.003	

C Range: 0 - 360DEG
 C Interval: 22.5DEG
 Test Speed: HIGH
 Temperature:25.3DEG
 Operators:
 Test Date:2023-04-25

γ Range: 0 - 180DEG
 γ Interval: 2.0DEG
 Test System:EVERFINE GO-2000B_V1 SYSTEM V2.00.450
 Humidity:65.0%
 Test Distance:6.040m [K=1.0000]
 Remarks:

UGR(Unified Glare Rating) Table

NAME: Blackline 1414 profile 1m + BL68.4K		TYPE:					WEIGHT:					
SPEC.:		DIM.:					SERIAL No.:					
MFR.:Lightrail		SUR.: 0.08*1					Shielding Angle:					
ceiling/cavity		0.7	0.7	0.5	0.5	0.3	0.7	0.7	0.5	0.5	0.3	
walls		0.5	0.3	0.5	0.3	0.3	0.5	0.3	0.5	0.3	0.3	
working plane		0.2	0.2	0.2	0.2	0.2	0.2	0.2	0.2	0.2	0.2	
Room dimensions		Viewed crosswise					Viewed endwise					
x = 2H y = 2H		17.8	19.4	18.1	19.6	19.8	17.7	19.2	17.9	19.4	19.6	
	3H	19.3	20.7	19.6	20.9	21.2	19.3	20.7	19.6	20.9	21.2	
	4H	19.7	21.0	20.0	21.3	21.6	19.9	21.2	20.2	21.5	21.8	
	6H	19.8	21.1	20.2	21.4	21.7	20.3	21.6	20.7	21.9	22.2	
	8H	19.8	21.0	20.2	21.3	21.6	20.5	21.7	20.8	22.0	22.3	
	12H	19.8	20.9	20.1	21.2	21.6	20.6	21.8	20.9	22.1	22.4	
	4H	2H	18.4	19.8	18.8	20.0	20.3	18.3	19.7	18.6	19.9	20.2
		3H	20.1	21.3	20.5	21.6	21.9	20.1	21.2	20.4	21.6	21.9
		4H	20.7	21.8	21.1	22.1	22.5	20.8	21.9	21.2	22.2	22.6
		6H	21.0	22.0	21.4	22.3	22.7	21.4	22.4	21.8	22.7	23.1
		8H	21.0	21.9	21.5	22.3	22.7	21.6	22.5	22.0	22.9	23.3
		12H	21.0	21.8	21.5	22.2	22.6	21.7	22.6	22.2	23.0	23.4
	8H	4H	21.0	21.9	21.4	22.3	22.7	21.1	22.0	21.5	22.4	22.8
		6H	21.5	22.2	22.0	22.7	23.1	21.8	22.6	22.3	23.0	23.4
		8H	21.6	22.3	22.1	22.7	23.2	22.1	22.8	22.6	23.2	23.7
		12H	21.7	22.2	22.2	22.7	23.2	22.3	22.9	22.8	23.4	23.8
	12H	4H	21.0	21.8	21.4	22.2	22.6	21.1	21.9	21.6	22.3	22.7
		6H	21.6	22.2	22.0	22.7	23.1	21.9	22.5	22.4	23.0	23.4
		8H	21.7	22.3	22.2	22.8	23.3	22.2	22.8	22.7	23.2	23.7
Variations with the observer position at spacings(CIE Pub.117):												
S = 1.0H		+ 0.1 / - 0.2					+ 0.1 / - 0.2					
1.5H		+ 0.2 / - 0.4					+ 0.2 / - 0.3					
2.0H		+ 0.2 / - 0.4					+ 0.1 / - 0.3					

CIE Pub.117, 281.6 lm Total Lamp Luminous Flux Correct (8log(F/F0) = -4.4)
 Area: 0.08 m2

C Range: 0 - 360DEG
 C Interval: 22.5DEG
 Test Speed: HIGH
 Temperature:25.3DEG
 Operators:
 Test Date:2023-04-25

γ Range: 0 - 180DEG
 γ Interval: 2.0DEG
 Test System:EVERFINE GO-2000B_V1 SYSTEM V2.00.450
 Humidity:65.0%
 Test Distance:6.040m [K=1.0000]
 Remarks:

UTILIZATION FACTORS TABLE

NAME: Blackline 1414 profile 1m + BL68.4K	TYPE:	WEIGHT:
SPEC.:	DIM.:	SERIAL No.:
MFR.:Lightrail	SUR.: 0.08*1	Shielding Angle:

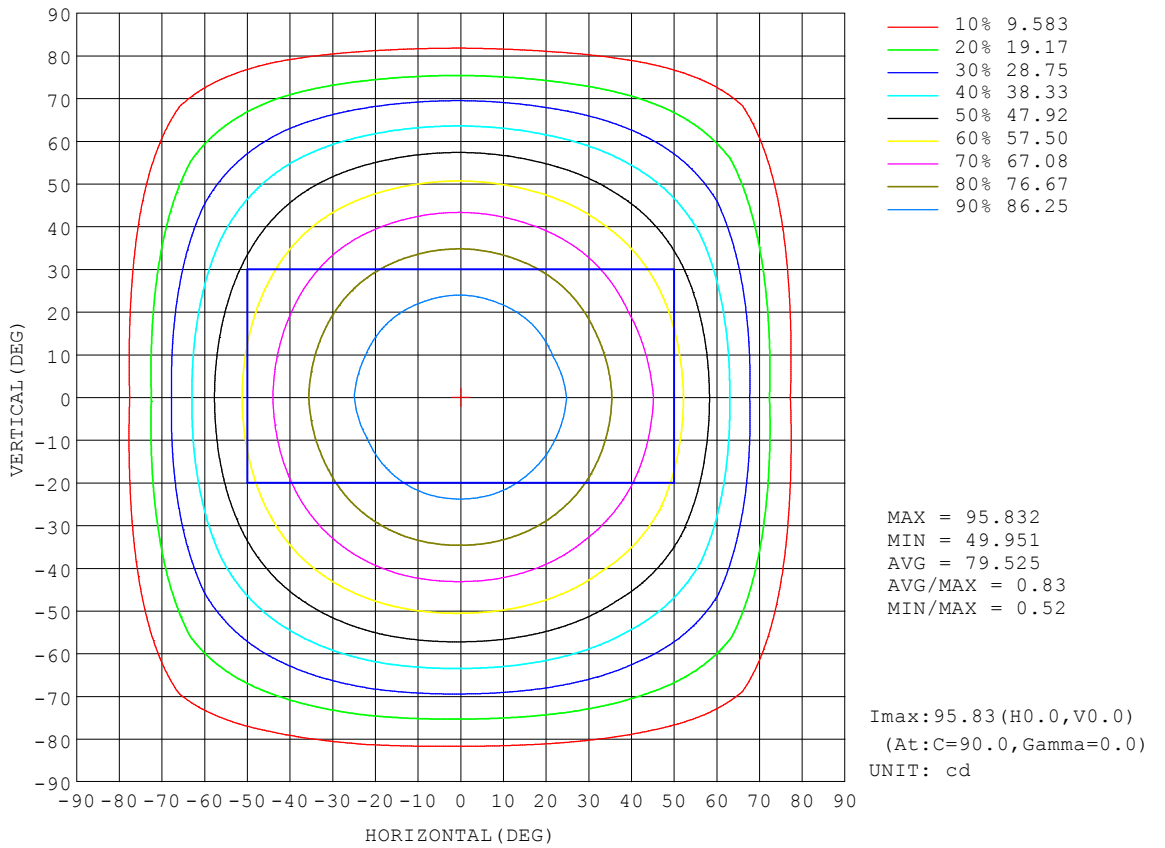
REFLECTANCE										
Ceiling	0.8	0.8	0.8	0.7	0.7	0.7	0.5	0.5	0.5	0
Walls	0.7	0.5	0.3	0.7	0.5	0.3	0.7	0.5	0.3	0
Working plane	0.2	0.2	0.2	0.2	0.2	0.2	0.2	0.2	0.2	0
ROOM INDEX	UTILIZATION FACTORS (PERCENT) $k(RI) \times RCR = 5$									
k = 0.60	57	45	38	56	45	38	55	44	38	31
0.80	67	55	48	66	55	47	64	54	47	40
1.00	75	64	57	74	63	56	72	65	56	49
1.25	82	72	65	81	71	64	78	70	63	56
1.50	87	77	70	86	77	70	83	75	69	61
2.00	94	86	79	93	85	78	89	82	77	69
2.50	98	91	84	96	89	83	92	86	82	73
3.00	102	95	89	100	93	88	95	90	86	77
4.00	106	100	95	103	98	94	99	95	91	82
5.00	108	103	99	106	101	98	101	98	95	85
ROOM INDEX	UF(total)									Direct
According to DIN EN 13032-2 2004			Suspended				SHRNOM = 1.25			

C Range: 0 - 360DEG
 C Interval: 22.5DEG
 Test Speed: HIGH
 Temperature:25.3DEG
 Operators:
 Test Date:2023-04-25

γ Range: 0 - 180DEG
 γ Interval: 2.0DEG
 Test System:EVERFINE GO-2000B_V1 SYSTEM V2.00.450
 Humidity:65.0%
 Test Distance:6.040m [K=1.0000]
 Remarks:

ISOCANDELA DIAGRAM

NAME: Blackline 1414 profile 1m + BL68.4K	TYPE:	WEIGHT:
SPEC.:	DIM.:	SERIAL No.:
MFR.:Lightrail	SUR.: 0.08*1	Shielding Angle:

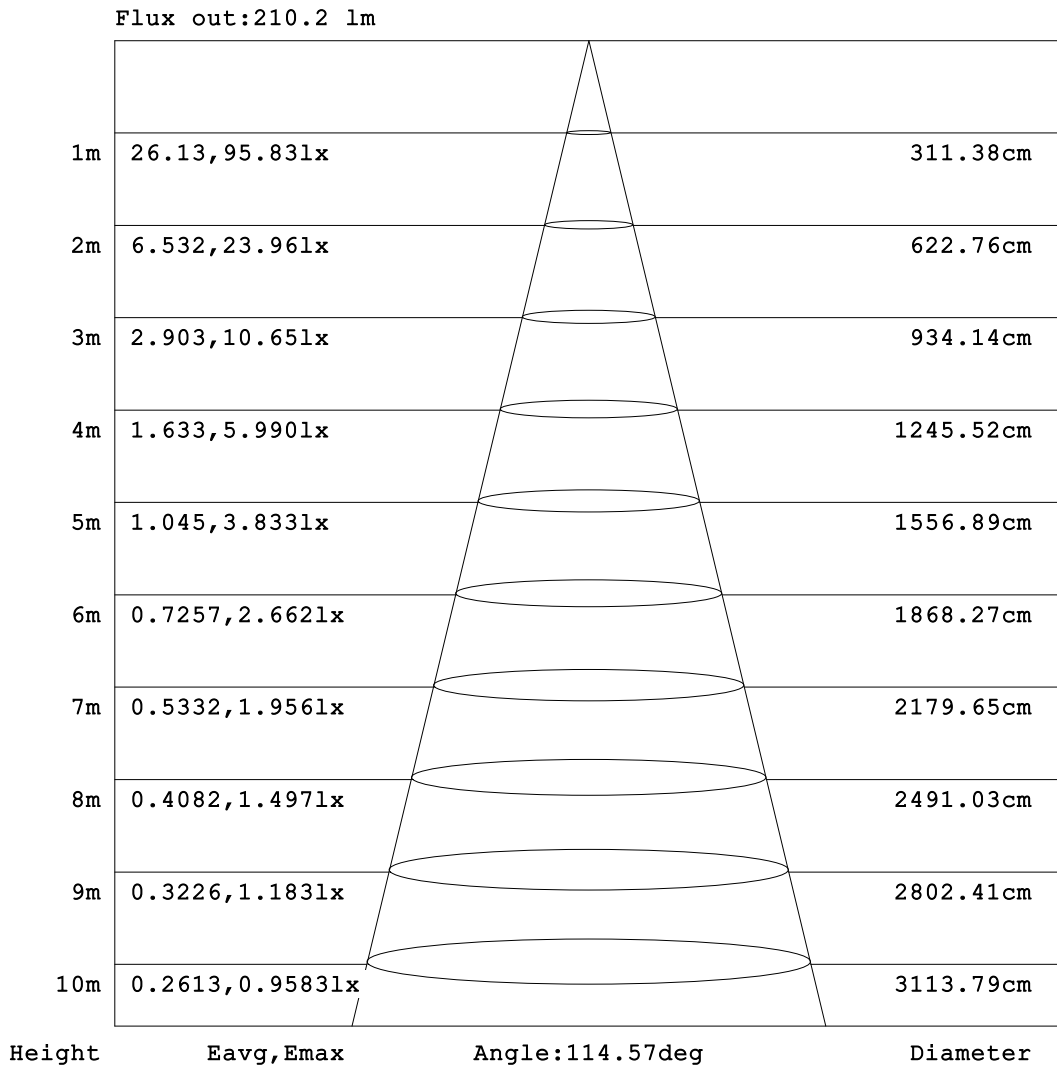


C Range: 0 - 360DEG
 C Interval: 22.5DEG
 Test Speed: HIGH
 Temperature:25.3DEG
 Operators:
 Test Date:2023-04-25

γ Range: 0 - 180DEG
 γ Interval: 2.0DEG
 Test System:EVERFINE GO-2000B_V1 SYSTEM V2.00.450
 Humidity:65.0%
 Test Distance:6.040m [K=1.0000]
 Remarks:

AAI Figure

NAME: Blackline 1414 profile 1m + BL68.4K	TYPE:	WEIGHT:
SPEC.:	DIM.:	SERIAL No.:
MFR.:Lightrail	SUR.: 0.08*1	Shielding Angle:



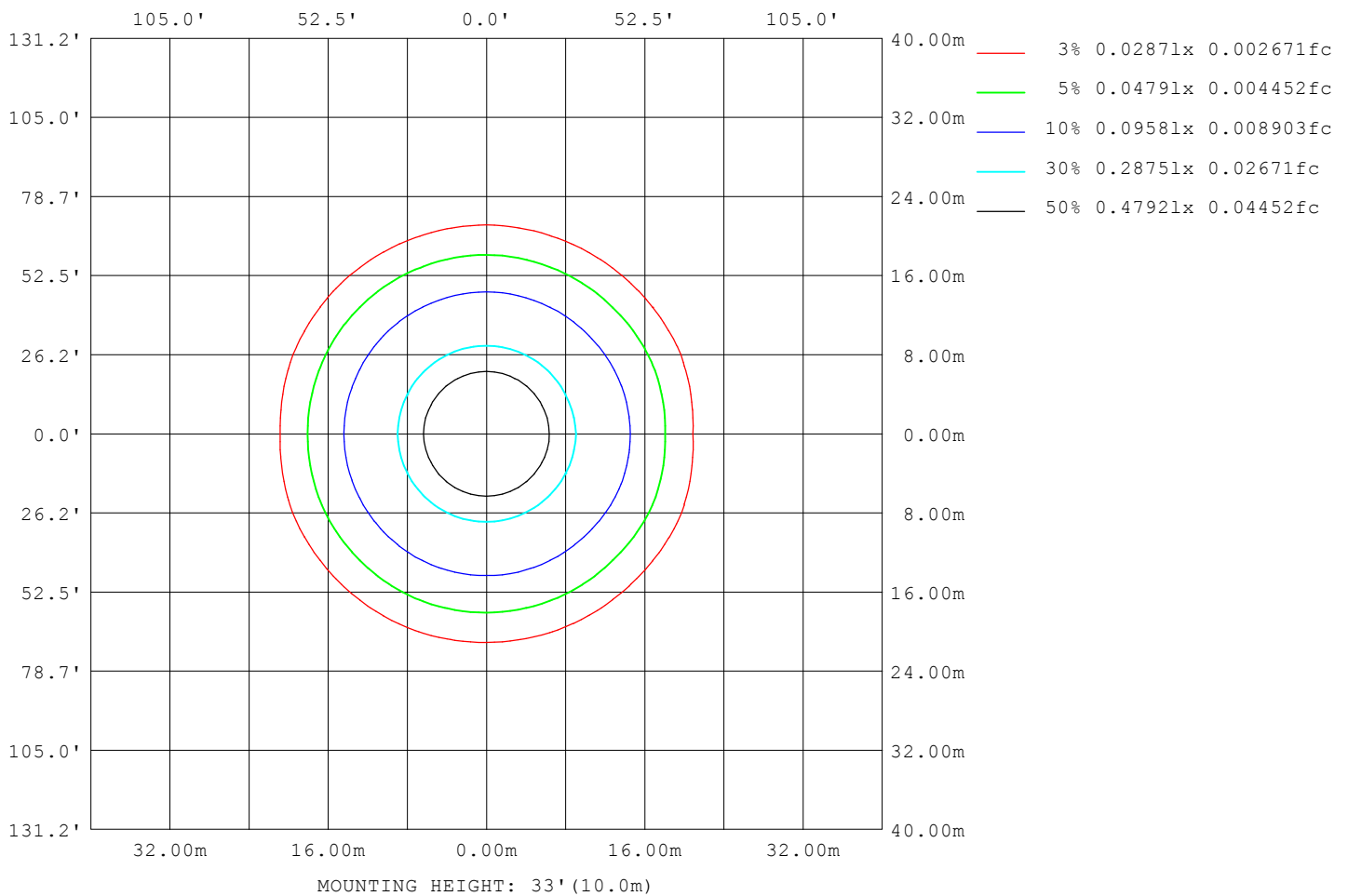
Note: The Curves indicate the illuminated area and the average illumination when the luminaire is at different distance.

C Range: 0 - 360DEG
 C Interval: 22.5DEG
 Test Speed: HIGH
 Temperature:25.3DEG
 Operators:
 Test Date:2023-04-25

γ Range: 0 - 180DEG
 γ Interval: 2.0DEG
 Test System:EVERFINE GO-2000B_V1 SYSTEM V2.00.450
 Humidity:65.0%
 Test Distance:6.040m [K=1.0000]
 Remarks:

ISOLUX DIAGRAM

NAME: Blackline 1414 profile 1m + BL68.4K	TYPE:	WEIGHT:
SPEC.:	DIM.:	SERIAL No.:
MFR.: Lightrail	SUR.: 0.08*1	Shielding Angle:



C Range: 0 - 360DEG
 C Interval: 22.5DEG
 Test Speed: HIGH
 Temperature: 25.3DEG
 Operators:
 Test Date: 2023-04-25

γ Range: 0 - 180DEG
 γ Interval: 2.0DEG
 Test System: EVERFINE GO-2000B_V1 SYSTEM V2.00.450
 Humidity: 65.0%
 Test Distance: 6.040m [K=1.0000]
 Remarks:

LED Avg.L Report

NAME: Blackline 1414 profile 1m + BL68.4K	TYPE:	WEIGHT:
SPEC.:	DIM.:	SERIAL No.:
MFR.:Lightrail	SUR.: 0.08*1	Shielding Angle:

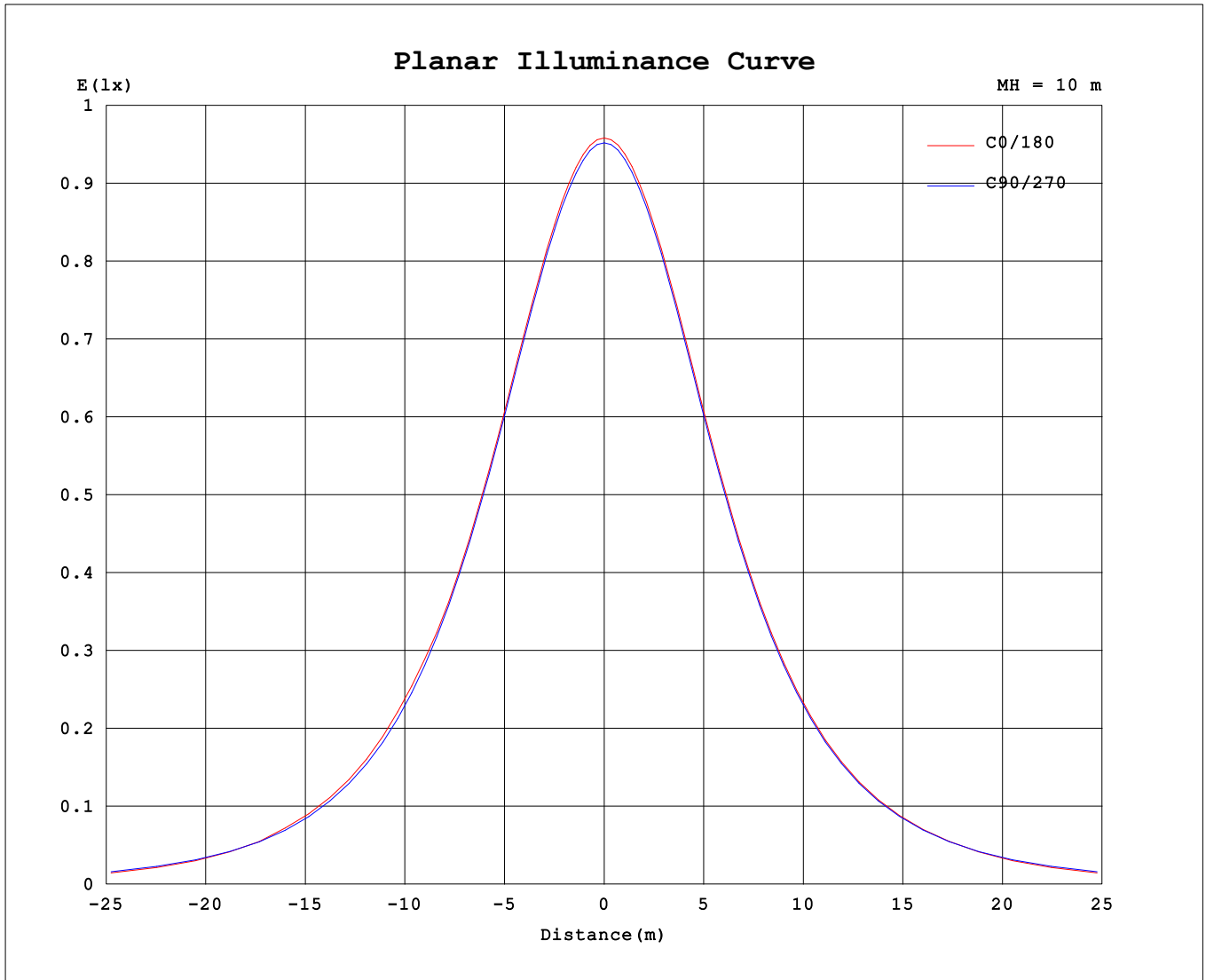
AvgL	cd/m2
L_0~180 (65) av	1008
L_0~180 (75) av	669
L_0~180 (85) av	9
L_90~270 (65) av	1065
L_90~270 (75) av	953
L_90~270 (85) av	802
L_45 (65) av	1068
L_45 (75) av	953
L_45 (85) av	753

Standard: GB/T 29293-2012

C Range: 0 - 360DEG
 C Interval: 22.5DEG
 Test Speed: HIGH
 Temperature:25.3DEG
 Operators:
 Test Date:2023-04-25

γ Range: 0 - 180DEG
 γ Interval: 2.0DEG
 Test System:EVERFINE GO-2000B_V1 SYSTEM V2.00.450
 Humidity:65.0%
 Test Distance:6.040m [K=1.0000]
 Remarks:

Planar Illuminance Curve



C Range: 0 - 360DEG
 C Interval: 22.5DEG
 Test Speed: HIGH
 Temperature: 25.3DEG
 Operators:
 Test Date: 2023-04-25

γ Range: 0 - 180DEG
 γ Interval: 2.0DEG
 Test System: EVERFINE GO-2000B_V1 SYSTEM V2.00.450
 Humidity: 65.0%
 Test Distance: 6.040m [K=1.0000]
 Remarks:

LUMINOUS DISTRIBUTION INTENSITY DATA

NAME: Blackline 1414 profile 1m + BL68.4K	TYPE:	WEIGHT:
SPEC.:	DIM.:	SERIAL No.:
MFR.:Lightrail	SUR.: 0.08*1	Shielding Angle:

Table--1

UNIT: cd

C (DEG) γ (DEG)	0	22.5	45	67.5	90	112.5	135	157.5	180	202.5	225	247.5	270	292.5	315	337.5			
0	95.3	95.3	95.3	95.3	95.3	95.3	95.3	95.3	95.3	95.3	95.3	95.3	95.3	95.3	95.3	95.3			
5	95.0	95.0	95.0	95.0	95.0	95.0	95.0	95.0	95.0	95.0	95.0	95.0	95.0	94.9	95.0	95.0			
10	93.7	93.6	93.5	93.5	93.5	93.6	93.6	93.7	93.7	93.7	93.7	93.6	93.6	93.5	93.5	93.6			
15	92.2	92.1	91.9	92.0	92.0	92.1	92.1	92.2	92.2	92.2	92.2	92.2	92.2	92.1	92.0	92.0			
20	89.0	88.9	88.8	88.9	88.9	89.0	89.0	89.1	89.1	89.0	89.1	89.0	89.0	88.9	89.0	88.8			
25	86.3	86.2	86.1	86.2	86.2	86.3	86.4	86.4	86.4	86.3	86.4	86.3	86.2	86.2	86.3	86.2			
30	81.4	81.4	81.2	81.3	81.2	81.5	81.5	81.6	81.6	81.5	81.6	81.3	81.3	81.2	81.4	81.3			
35	77.7	77.6	77.4	77.4	77.4	77.6	77.7	77.8	77.8	77.7	77.8	77.6	77.5	77.4	77.5	77.6			
40	71.6	71.2	70.9	70.9	70.9	71.2	71.3	71.5	71.4	71.3	71.4	71.1	71.0	70.8	71.1	71.1			
45	68.0	67.2	66.1	66.1	66.1	66.4	66.5	66.8	66.7	66.5	66.6	66.3	66.3	66.0	66.3	66.5			
50	60.3	60.2	58.3	58.3	58.3	58.7	58.8	59.0	58.9	58.8	58.8	58.5	58.4	58.2	58.4	59.6			
55	54.5	54.5	52.7	52.7	52.7	53.1	53.1	53.4	53.2	53.1	53.2	52.9	52.8	52.6	52.8	54.2			
60	43.7	45.2	43.8	43.8	43.8	44.2	44.2	44.4	43.8	44.0	44.2	44.0	43.9	43.6	43.8	44.9			
65	36.1	38.7	37.5	37.5	37.6	38.0	37.9	38.1	36.1	37.7	38.0	37.7	37.7	37.3	37.5	38.4			
70	23.9	28.7	27.7	27.8	27.9	28.3	28.2	28.2	24.0	27.7	28.1	27.9	27.9	27.6	27.7	28.2			
75	15.6	21.9	21.2	21.3	21.3	21.8	21.6	21.6	16.0	21.0	21.5	21.4	21.4	21.0	21.2	21.4			
80	4.92	12.0	11.7	11.9	12.0	12.4	12.0	12.2	5.52	11.4	12.0	12.0	12.0	11.7	11.7	11.6			
85	0.15	6.23	6.29	6.63	6.69	6.96	6.50	6.57	0.36	5.75	6.45	6.63	6.75	6.48	6.34	5.95			
90	0.04	1.17	1.39	1.50	1.50	1.58	1.20	1.05	0.04	0.72	1.16	1.42	1.56	1.50	1.43	1.11			
95	0.03	0.84	0.63	0.34	0.23	0.25	0.20	0.49	0.05	0.33	0.43	0.21	0.24	0.35	0.57	0.82			
100	0.03	0.67	0.56	0.19	0.05	0.07	0.15	0.38	0.07	0.31	0.36	0.08	0.07	0.22	0.49	0.69			
105	0.05	0.52	0.50	0.18	0.05	0.08	0.14	0.27	0.08	0.26	0.30	0.08	0.07	0.21	0.46	0.56			
110	0.07	0.28	0.41	0.18	0.07	0.09	0.12	0.15	0.10	0.17	0.23	0.08	0.09	0.21	0.38	0.33			
115	0.08	0.20	0.36	0.18	0.08	0.11	0.12	0.14	0.11	0.14	0.19	0.09	0.11	0.20	0.34	0.26			
120	0.11	0.17	0.25	0.18	0.10	0.13	0.13	0.13	0.13	0.14	0.16	0.11	0.12	0.19	0.25	0.20			
125	0.12	0.17	0.23	0.18	0.11	0.14	0.13	0.15	0.15	0.14	0.15	0.12	0.14	0.19	0.22	0.18			
130	0.14	0.17	0.21	0.18	0.13	0.17	0.14	0.17	0.17	0.15	0.17	0.14	0.16	0.19	0.21	0.18			
135	0.16	0.18	0.21	0.19	0.15	0.18	0.15	0.18	0.19	0.15	0.18	0.15	0.17	0.19	0.21	0.18			
140	0.18	0.20	0.21	0.20	0.17	0.20	0.17	0.20	0.20	0.18	0.20	0.17	0.19	0.19	0.21	0.18			
145	0.19	0.21	0.21	0.21	0.18	0.21	0.19	0.22	0.22	0.19	0.21	0.18	0.21	0.19	0.21	0.18			
150	0.21	0.23	0.21	0.23	0.20	0.23	0.21	0.23	0.23	0.20	0.23	0.21	0.23	0.20	0.23	0.21			
155	0.22	0.24	0.22	0.24	0.22	0.25	0.22	0.24	0.24	0.22	0.24	0.22	0.24	0.21	0.24	0.22			
160	0.23	0.26	0.23	0.25	0.24	0.27	0.23	0.26	0.26	0.23	0.26	0.23	0.26	0.23	0.26	0.23			
165	0.24	0.26	0.24	0.27	0.25	0.28	0.25	0.26	0.27	0.24	0.27	0.25	0.27	0.24	0.27	0.24			
170	0.26	0.27	0.25	0.28	0.27	0.28	0.26	0.27	0.27	0.26	0.27	0.26	0.28	0.25	0.27	0.25			
175	0.26	0.27	0.27	0.29	0.27	0.28	0.26	0.27	0.27	0.26	0.27	0.26	0.28	0.26	0.28	0.26			
180	0.27	0.27	0.27	0.29	0.28	0.28	0.27	0.27	0.27	0.27	0.27	0.27	0.28	0.28	0.28	0.27			

C Range: 0 - 360DEG
 C Interval: 22.5DEG
 Test Speed: HIGH
 Temperature:25.3DEG
 Operators:
 Test Date:2023-04-25

γ Range: 0 - 180DEG
 γ Interval: 2.0DEG
 Test System:EVERFINE GO-2000B_V1 SYSTEM V2.00.450
 Humidity:65.0%
 Test Distance:6.040m [K=1.0000]
 Remarks: