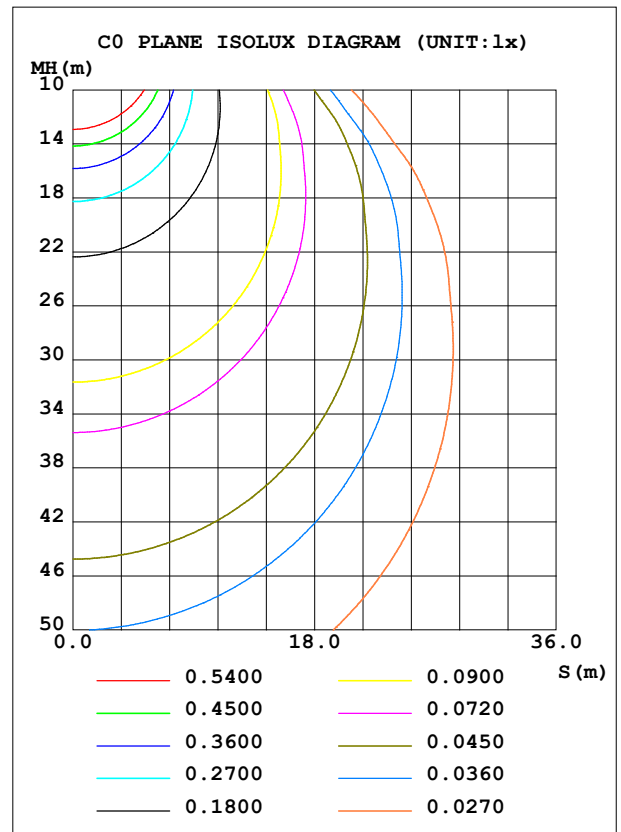
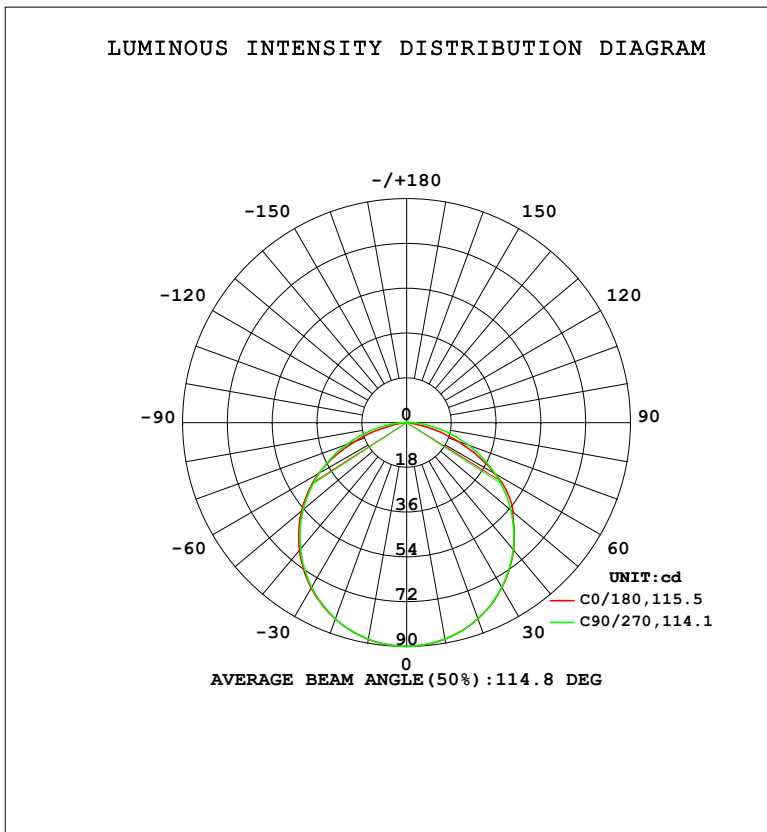


LUMINAIRE PHOTOMETRIC TEST REPORT

NAME: Blackline 1414 profile 1m+ BL68.3K	TYPE:	WEIGHT:
SPEC.:	DIM.:	SERIAL No.:
MFR.:Lightrail	SUR.: 0.08*1	Shielding Angle:

DATA OF LAMP		PHOTOMETRIC DATA				Eff: 36.34 lm/W
MODEL	3000K	I _{max} (cd)	89.92	S/MH (C0/180)	1.27	
NOMINAL POWER (W)	6.8	LOR (%)	100.0	S/MH (C90/270)	1.26	
RATED VOLTAGE (V)	24	TOTAL FLUX (lm)	263.87	η UP, DN (C0-180)	0.3, 49.9	
NOMINAL FLUX (lm)	263.856	CIE CLASS	DIRECT	η UP, DN (C180-360)	0.3, 49.5	
LAMPS INSIDE	1	η up (%)	0.6	CIBSE SHR NOM	1.25	
TEST VOLTAGE (V)	24	η down (%)	99.4	CIBSE SHR MAX	1.35	



C Range: 0 - 360DEG
 C Interval: 22.5DEG
 Test Speed: HIGH
 Temperature: 25.3DEG
 Operators:
 Test Date: 2023-04-25

γ Range: 0 - 180DEG
 γ Interval: 2.0DEG
 Test System: EVERFINE GO-2000B_V1 SYSTEM V2.00.450
 Humidity: 65.0%
 Test Distance: 6.040m [K=1.0000]
 Remarks:

ZONAL FLUX DIAGRAM

ZONAL FLUX DIAGRAM:

γ	C0	C45	C90	C135	C180	C225	C270	C315	γ	Φ zone	Φ total	%lum,lamp
10	88.35	88.34	88.38	88.41	88.44	88.58	88.49	88.43	0- 10	8.513	8.513	3.23,3.23
20	83.87	83.83	83.85	84.04	83.99	84.13	83.88	83.89	10- 20	24.43	32.94	12.5,12.5
30	76.61	76.49	76.48	76.83	76.76	76.81	76.39	76.49	20- 30	37.16	70.10	26.6,26.6
40	66.84	66.65	66.62	67.12	67.01	66.95	66.39	66.56	30- 40	45.04	115.1	43.6,43.6
50	55.74	54.61	54.65	55.20	55.06	54.91	54.30	54.45	40- 50	47.07	162.2	61.5,61.5
60	40.61	40.84	41.02	41.48	40.97	41.04	40.47	40.57	50- 60	43.04	205.2	77.8,77.8
70	21.94	25.82	26.29	26.44	22.26	25.88	25.58	25.48	60- 70	32.99	238.2	90.3,90.3
80	4.573	11.16	12.00	11.65	4.983	11.04	11.28	10.79	70- 80	18.76	257.0	97.4,97.4
90	0.0314	1.399	1.822	1.265	0.0393	1.028	1.487	1.256	80- 90	5.352	262.3	99.4,99.4
100	0.0288	0.4858	0.2542	0.1451	0.0603	0.1390	0.1854	0.4604	90-100	0.5686	262.9	99.6,99.6
110	0.0576	0.3464	0.0916	0.0869	0.0891	0.1434	0.0837	0.3289	100-110	0.2239	263.1	99.7,99.7
120	0.0969	0.2206	0.0941	0.1079	0.1284	0.1442	0.1177	0.2210	110-120	0.1524	263.3	99.8,99.8
130	0.1310	0.1837	0.1255	0.1368	0.1546	0.1601	0.1517	0.2092	120-130	0.1351	263.4	99.8,99.8
140	0.1650	0.1837	0.1595	0.1605	0.1938	0.1889	0.1857	0.1974	130-140	0.1299	263.6	99.9,99.9
150	0.1938	0.1836	0.1883	0.1921	0.2201	0.2152	0.2171	0.2132	140-150	0.1193	263.7	99.9,99.9
160	0.2174	0.2151	0.2197	0.2184	0.2410	0.2440	0.2485	0.2421	150-160	0.0999	263.8	100,100
170	0.2383	0.2361	0.2432	0.2395	0.2593	0.2577	0.2605	0.2606	160-170	0.0679	263.8	100,100
180	0.2541	0.2571	0.2615	0.2579	0.2593	0.2598	0.2615	0.2606	170-180	0.0241	263.9	100,100
DEG	LUMINOUS INTENSITY:cd									UNIT:lm		

Conical surface Flux(90deg): 143.53 lm

%lum = 54.4%

%lamp = 54.4%

Conical surface Flux(120deg): 205.25 lm

%lum = 77.8%

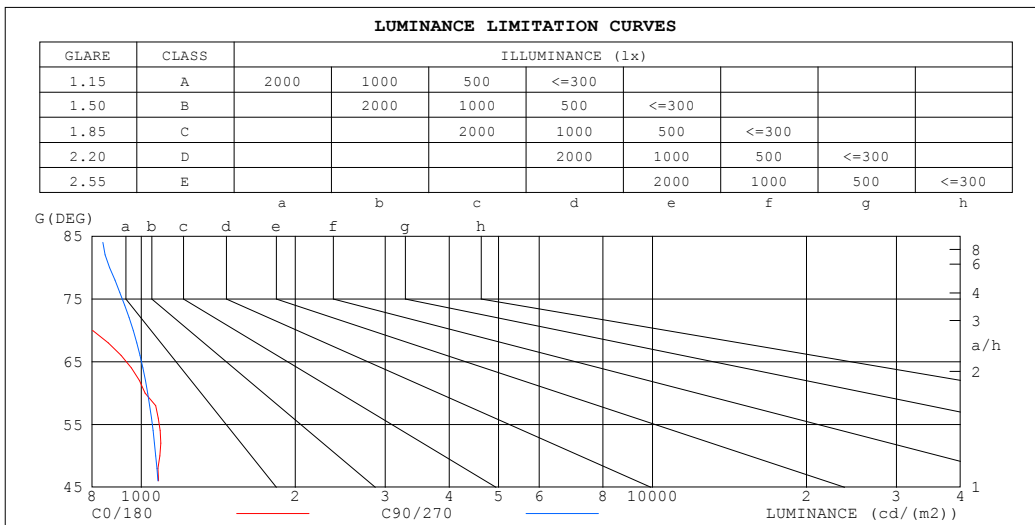
%lamp = 77.8%

C Range: 0 - 360DEG
 C Interval: 22.5DEG
 Test Speed: HIGH
 Temperature:25.3DEG
 Operators:
 Test Date:2023-04-25

γ Range: 0 - 180DEG
 γ Interval: 2.0DEG
 Test System:EVERFINE GO-2000B_V1 SYSTEM V2.00.450
 Humidity:65.0%
 Test Distance:6.040m [K=1.0000]
 Remarks:

LUMINANCE LIMITATION CURVES

NAME: Blackline 1414 profile 1m+ BL68.3K	TYPE:	WEIGHT:
SPEC.:	DIM.:	SERIAL No.:
MFR.: Lightrail	SUR.: 0.08*1	Shielding Angle:



LUMINANCE cd/ (m2)		
G (DEG)	C0/180	C90/270
85	18	1008
80	330	867
75	695	988
70	803	964
65	991	1045
60	1017	1029
55	1115	1080
50	1086	1067
45	1103	1101

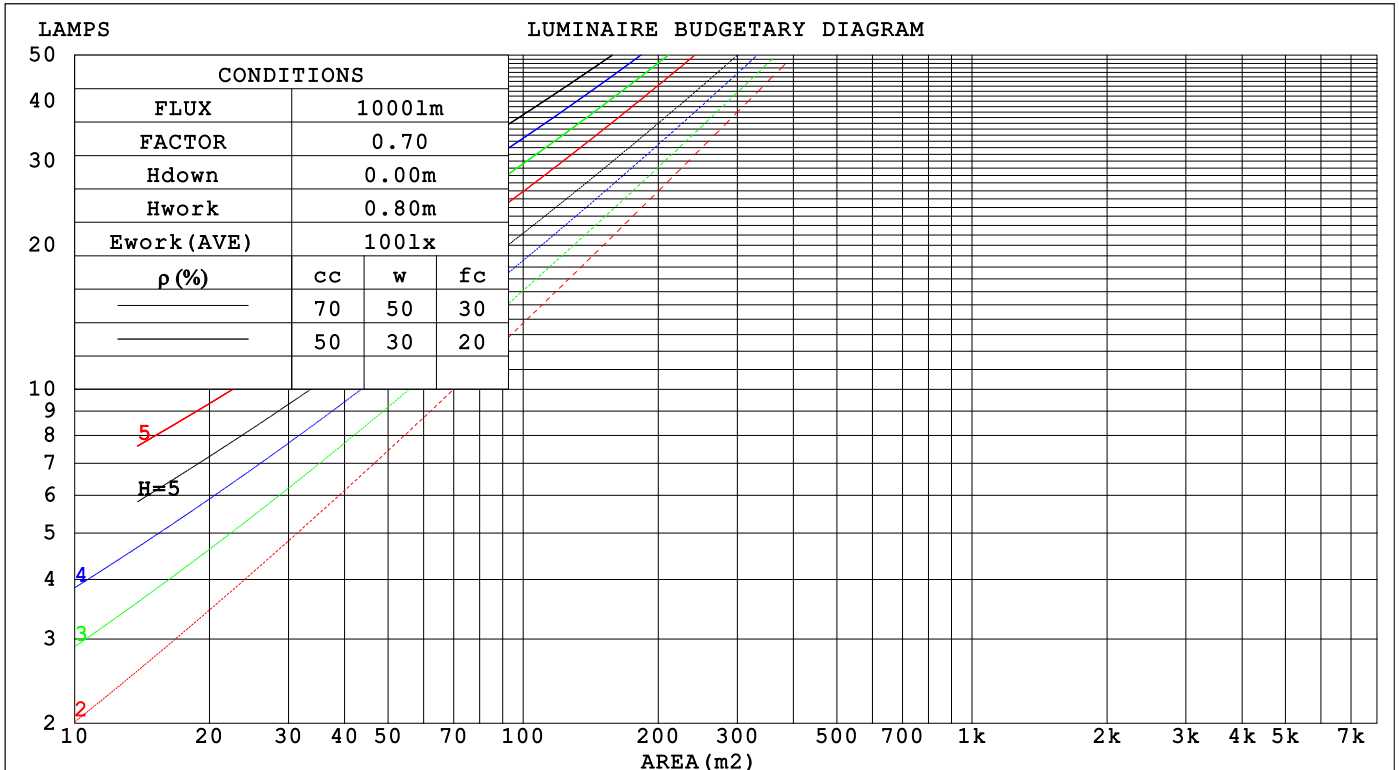
C Range: 0 - 360DEG
 C Interval: 22.5DEG
 Test Speed: HIGH
 Temperature:25.3DEG
 Operators:
 Test Date:2023-04-25

γ Range: 0 - 180DEG
 γ Interval: 2.0DEG
 Test System:EVERFINE GO-2000B_V1 SYSTEM V2.00.450
 Humidity:65.0%
 Test Distance:6.040m [K=1.0000]
 Remarks:

CU AND LUMINAIRE BUDGETARY ESTIMATE DIAGRAM

NAME: Blackline 1414 profile 1m+ BL68.3K	TYPE:	WEIGHT:
SPEC.:	DIM.:	SERIAL No.:
MFR.:Lightrail	SUR.: 0.08*1	Shielding Angle:

pcc	80%			70%			50%			30%			10%			0
pw	50%	30%	10%	50%	30%	10%	50%	30%	10%	50%	30%	10%	50%	30%	10%	0
pfc	20%			20%			20%			20%			20%			0
RCR	RCR:Room Cavity Ratio						Coefficients of Utilization(CU)									
0.0	1.19	1.19	1.19	1.16	1.16	1.16	1.11	1.11	1.11	1.06	1.06	1.06	1.02	1.02	1.02	.99
1.0	1.04	.99	.95	1.01	.97	.94	.97	.94	.91	.93	.90	.88	.89	.87	.85	.83
2.0	.90	.83	.77	.88	.82	.76	.84	.79	.74	.81	.77	.73	.78	.74	.71	.69
3.0	.79	.71	.64	.77	.70	.63	.74	.68	.62	.71	.66	.61	.69	.64	.60	.58
4.0	.70	.61	.54	.68	.60	.54	.66	.59	.53	.63	.57	.52	.61	.56	.51	.49
5.0	.62	.53	.46	.61	.53	.46	.59	.51	.46	.57	.50	.45	.55	.49	.45	.42
6.0	.56	.47	.40	.55	.46	.40	.53	.46	.40	.51	.45	.39	.50	.44	.39	.37
7.0	.51	.42	.36	.50	.41	.36	.48	.41	.35	.47	.40	.35	.45	.39	.35	.33
8.0	.46	.38	.32	.46	.37	.32	.44	.37	.31	.43	.36	.31	.42	.36	.31	.29
9.0	.42	.34	.29	.42	.34	.28	.41	.33	.28	.39	.33	.28	.38	.32	.28	.26
10.0	.39	.31	.26	.39	.31	.26	.38	.30	.26	.37	.30	.25	.36	.30	.25	.24



C Range: 0 - 360DEG
 C Interval: 22.5DEG
 Test Speed: HIGH
 Temperature:25.3DEG
 Operators:
 Test Date:2023-04-25

γ Range: 0 - 180DEG
 γ Interval: 2.0DEG
 Test System:EVERFINE GO-2000B_V1 SYSTEM V2.00.450
 Humidity:65.0%
 Test Distance:6.040m [K=1.0000]
 Remarks:

WEC AND CCEC

NAME: Blackline 1414 profile 1m+ BL68.3K	TYPE:	WEIGHT:
SPEC.:	DIM.:	SERIAL No.:
MFR.:Lightrail	SUR.: 0.08*1	Shielding Angle:

ρ_{CC}	80%			70%			50%			30%			10%			0
ρ_w	50%	30%	10%	50%	30%	10%	50%	30%	10%	50%	30%	10%	50%	30%	10%	0
ρ_{fc}	20%			20%			20%			20%			20%			0
RCR	RCR:Room Cavity Ratio						Wall Exitance Coefficients(WEC)									
0.0																
1.0	.313	.178	.056	.306	.174	.055	.292	.168	.054	.280	.161	.052	.268	.155	.050	
2.0	.294	.161	.049	.288	.158	.049	.276	.153	.048	.264	.148	.046	.254	.144	.045	
3.0	.272	.145	.043	.266	.143	.043	.255	.138	.042	.246	.135	.041	.236	.131	.041	
4.0	.251	.130	.038	.246	.129	.038	.236	.125	.037	.227	.122	.037	.219	.119	.036	
5.0	.232	.118	.034	.227	.117	.034	.219	.114	.034	.211	.111	.033	.204	.109	.033	
6.0	.215	.108	.031	.211	.106	.031	.203	.104	.030	.196	.102	.030	.190	.100	.030	
7.0	.200	.099	.028	.196	.098	.028	.189	.096	.028	.183	.094	.027	.177	.092	.027	
8.0	.186	.091	.026	.183	.090	.025	.177	.089	.025	.172	.087	.025	.166	.085	.025	
9.0	.175	.084	.024	.172	.084	.023	.166	.082	.023	.161	.081	.023	.156	.079	.023	
10.0	.164	.079	.022	.162	.078	.022	.157	.077	.022	.152	.076	.021	.148	.074	.021	

ρ_{CC}	80%			70%			50%			30%			10%			0
ρ_w	50%	30%	10%	50%	30%	10%	50%	30%	10%	50%	30%	10%	50%	30%	10%	0
ρ_{fc}	20%			20%			20%			20%			20%			0
RCR	RCR:Room Cavity Ratio						Ceiling Cavity Exitance Coefficients(CCEC)									
0.0	.195	.195	.195	.167	.167	.167	.114	.114	.114	.065	.065	.065	.021	.021	.021	
1.0	.185	.161	.139	.158	.138	.119	.108	.095	.082	.062	.055	.048	.020	.018	.016	
2.0	.177	.136	.102	.152	.117	.088	.104	.081	.062	.060	.047	.036	.019	.015	.012	
3.0	.169	.119	.079	.145	.102	.068	.100	.071	.048	.058	.042	.028	.018	.013	.009	
4.0	.162	.106	.063	.139	.091	.054	.095	.064	.038	.055	.037	.023	.018	.012	.007	
5.0	.154	.095	.052	.133	.082	.045	.091	.058	.032	.053	.034	.019	.017	.011	.006	
6.0	.147	.087	.044	.126	.075	.038	.087	.053	.027	.051	.031	.016	.016	.010	.005	
7.0	.140	.080	.038	.121	.069	.033	.083	.049	.023	.048	.029	.014	.016	.009	.005	
8.0	.134	.074	.033	.115	.064	.029	.080	.045	.021	.046	.027	.012	.015	.009	.004	
9.0	.128	.069	.030	.110	.060	.026	.076	.042	.018	.044	.025	.011	.014	.008	.004	
10.0	.122	.065	.027	.105	.056	.024	.073	.040	.017	.043	.023	.010	.014	.008	.003	

C Range: 0 - 360DEG
 C Interval: 22.5DEG
 Test Speed: HIGH
 Temperature:25.3DEG
 Operators:
 Test Date:2023-04-25

γ Range: 0 - 180DEG
 γ Interval: 2.0DEG
 Test System:EVERFINE GO-2000B_V1 SYSTEM V2.00.450
 Humidity:65.0%
 Test Distance:6.040m [K=1.0000]
 Remarks:

UGR(Unified Glare Rating) Table

NAME: Blackline 1414 profile 1m+ BL68.3K		TYPE:					WEIGHT:					
SPEC.:		DIM.:					SERIAL No.:					
MFR.:Lightrail		SUR.: 0.08*1					Shielding Angle:					
ceiling/cavity		0.7	0.7	0.5	0.5	0.3	0.7	0.7	0.5	0.5	0.3	
walls		0.5	0.3	0.5	0.3	0.3	0.5	0.3	0.5	0.3	0.3	
working plane		0.2	0.2	0.2	0.2	0.2	0.2	0.2	0.2	0.2	0.2	
Room dimensions		Viewed crosswise					Viewed endwise					
x = 2H y = 2H		17.7	19.3	18.0	19.5	19.7	17.7	19.2	18.0	19.4	19.6	
	3H	19.1	20.5	19.4	20.8	21.0	19.3	20.7	19.6	20.9	21.2	
	4H	19.6	20.9	19.9	21.2	21.4	19.9	21.3	20.3	21.5	21.8	
	6H	19.7	21.0	20.1	21.3	21.5	20.4	21.7	20.8	22.0	22.3	
	8H	19.7	20.9	20.0	21.2	21.5	20.6	21.8	21.0	22.1	22.4	
	12H	19.6	20.8	20.0	21.1	21.4	20.7	21.9	21.1	22.2	22.5	
	4H	2H	18.4	19.7	18.7	20.0	20.2	18.3	19.7	18.6	19.9	20.2
		3H	20.0	21.2	20.3	21.5	21.8	20.1	21.3	20.4	21.6	21.9
		4H	20.6	21.7	21.0	22.0	22.3	20.9	21.9	21.3	22.3	22.6
		6H	20.9	21.8	21.3	22.2	22.6	21.5	22.5	21.9	22.8	23.2
		8H	20.9	21.8	21.3	22.2	22.6	21.7	22.6	22.2	23.0	23.4
		12H	20.9	21.7	21.3	22.1	22.5	21.9	22.7	22.4	23.1	23.5
	8H	4H	20.9	21.8	21.3	22.1	22.5	21.1	22.0	21.6	22.4	22.8
		6H	21.4	22.1	21.8	22.5	23.0	21.9	22.7	22.4	23.1	23.5
		8H	21.5	22.2	22.0	22.6	23.1	22.3	22.9	22.7	23.4	23.8
		12H	21.6	22.1	22.0	22.6	23.1	22.5	23.1	23.0	23.6	24.0
	12H	4H	20.9	21.7	21.3	22.1	22.5	21.1	22.0	21.6	22.4	22.8
		6H	21.5	22.1	21.9	22.6	23.0	22.0	22.6	22.5	23.1	23.5
		8H	21.6	22.2	22.1	22.7	23.2	22.4	22.9	22.8	23.4	23.9
Variations with the observer position at spacings(CIE Pub.117):												
S = 1.0H		+ 0.1 / - 0.2					+ 0.1 / - 0.2					
1.5H		+ 0.2 / - 0.4					+ 0.2 / - 0.3					
2.0H		+ 0.2 / - 0.5					+ 0.1 / - 0.3					

CIE Pub.117, 263.9 lm Total Lamp Luminous Flux Correct (8log(F/F0) = -4.6)
 Area: 0.08 m2

C Range: 0 - 360DEG
 C Interval: 22.5DEG
 Test Speed: HIGH
 Temperature:25.3DEG
 Operators:
 Test Date:2023-04-25

γ Range: 0 - 180DEG
 γ Interval: 2.0DEG
 Test System:EVERFINE GO-2000B_V1 SYSTEM V2.00.450
 Humidity:65.0%
 Test Distance:6.040m [K=1.0000]
 Remarks:

UTILIZATION FACTORS TABLE

NAME: Blackline 1414 profile 1m+ BL68.3K	TYPE:	WEIGHT:
SPEC.:	DIM.:	SERIAL No.:
MFR.:Lightrail	SUR.: 0.08*1	Shielding Angle:

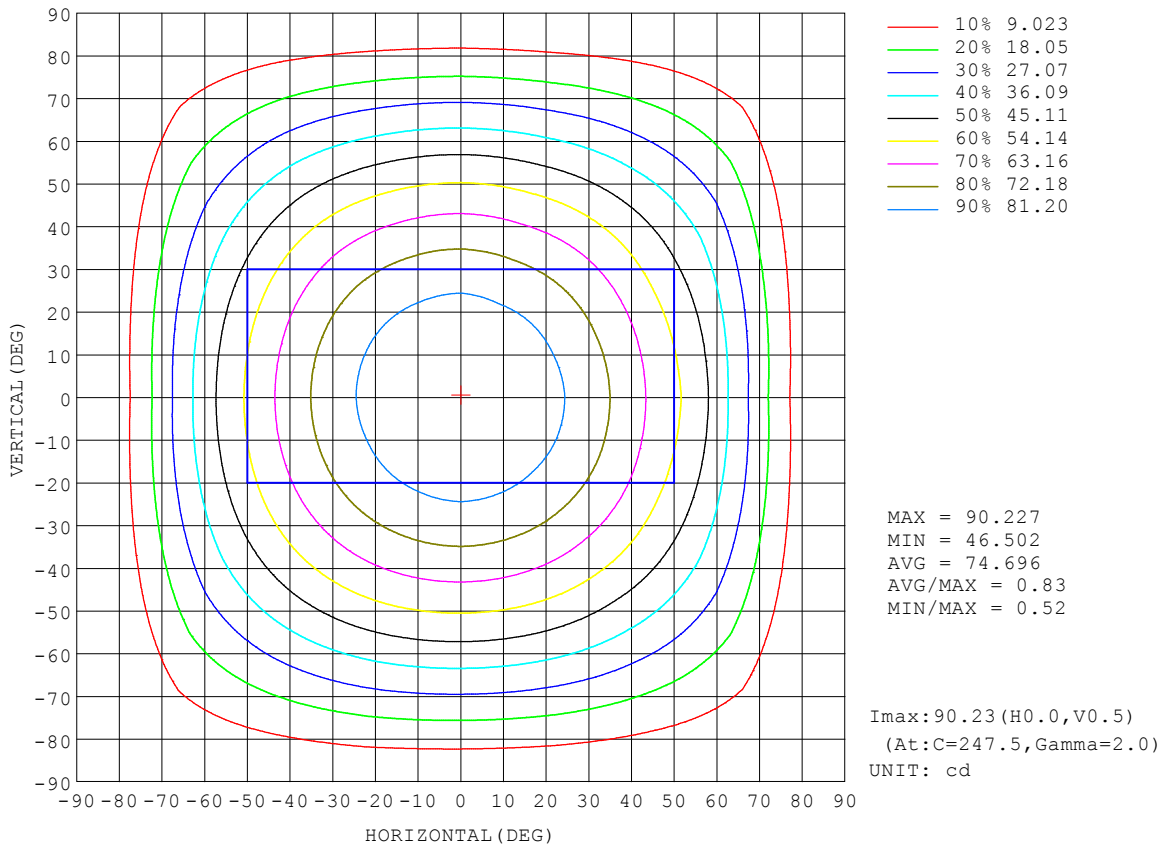
REFLECTANCE										
Ceiling	0.8	0.8	0.8	0.7	0.7	0.7	0.5	0.5	0.5	0
Walls	0.7	0.5	0.3	0.7	0.5	0.3	0.7	0.5	0.3	0
Working plane	0.2	0.2	0.2	0.2	0.2	0.2	0.2	0.2	0.2	0
ROOM INDEX	UTILIZATION FACTORS (PERCENT) $k(RI) \times RCR = 5$									
k = 0.60	57	45	38	56	45	38	55	44	38	31
0.80	67	55	48	66	55	48	64	54	47	40
1.00	75	64	57	74	64	56	72	65	56	49
1.25	83	72	65	81	71	64	78	70	63	56
1.50	88	78	70	86	77	70	83	75	69	61
2.00	94	86	79	93	85	78	89	82	77	69
2.50	98	91	84	96	89	83	92	86	82	73
3.00	102	95	89	100	93	88	95	90	86	77
4.00	106	100	95	103	98	94	99	95	91	82
5.00	108	103	99	106	101	98	101	98	95	85
ROOM INDEX	UF(total)									Direct
According to DIN EN 13032-2 2004			Suspended				SHRNOM = 1.25			

C Range: 0 - 360DEG
 C Interval: 22.5DEG
 Test Speed: HIGH
 Temperature:25.3DEG
 Operators:
 Test Date:2023-04-25

γ Range: 0 - 180DEG
 γ Interval: 2.0DEG
 Test System:EVERFINE GO-2000B_V1 SYSTEM V2.00.450
 Humidity:65.0%
 Test Distance:6.040m [K=1.0000]
 Remarks:

ISOCANDELA DIAGRAM

NAME: Blackline 1414 profile 1m+ BL68.3K	TYPE:	WEIGHT:
SPEC.:	DIM.:	SERIAL No.:
MFR.:Lightrail	SUR.: 0.08*1	Shielding Angle:



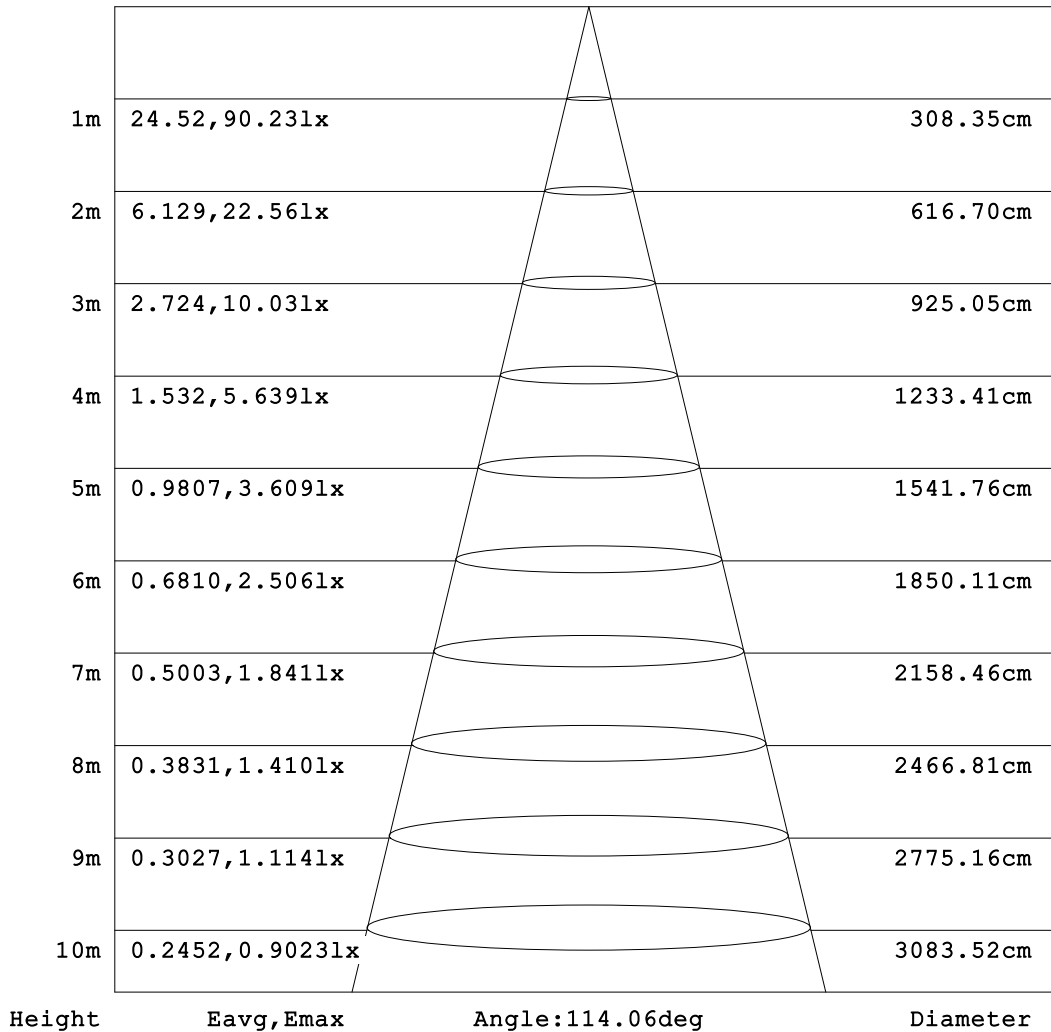
C Range: 0 - 360DEG
 C Interval: 22.5DEG
 Test Speed: HIGH
 Temperature:25.3DEG
 Operators:
 Test Date:2023-04-25

γ Range: 0 - 180DEG
 γ Interval: 2.0DEG
 Test System:EVERFINE GO-2000B_V1 SYSTEM V2.00.450
 Humidity:65.0%
 Test Distance:6.040m [K=1.0000]
 Remarks:

AAI Figure

NAME: Blackline 1414 profile 1m+ BL68.3K	TYPE:	WEIGHT:
SPEC.:	DIM.:	SERIAL No.:
MFR.:Lightrail	SUR.: 0.08*1	Shielding Angle:

Flux out:197.3 lm



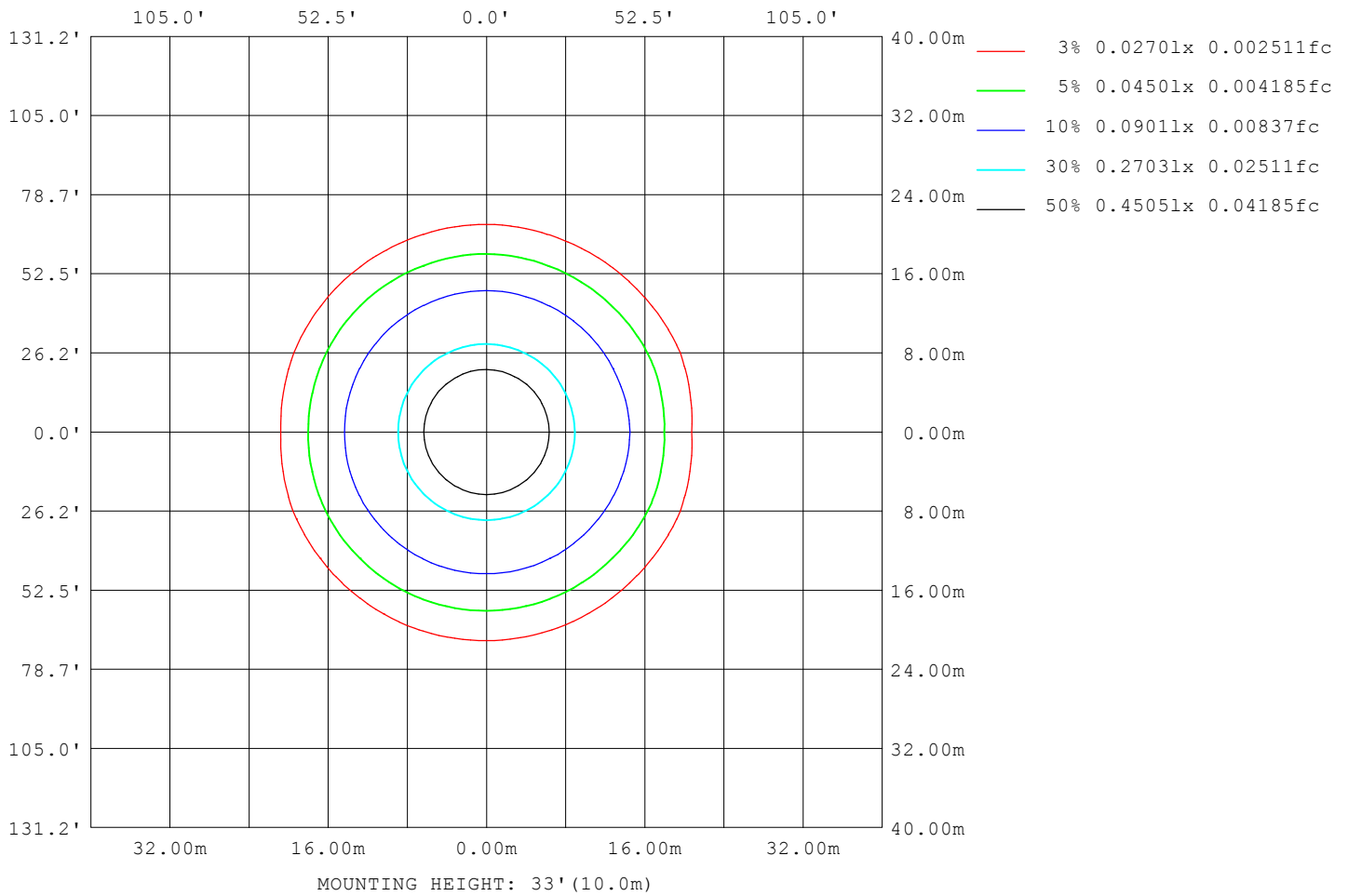
Note: The Curves indicate the illuminated area and the average illumination when the luminaire is at different distance.

C Range: 0 - 360DEG
 C Interval: 22.5DEG
 Test Speed: HIGH
 Temperature: 25.3DEG
 Operators:
 Test Date: 2023-04-25

γ Range: 0 - 180DEG
 γ Interval: 2.0DEG
 Test System: EVERFINE GO-2000B_V1 SYSTEM V2.00.450
 Humidity: 65.0%
 Test Distance: 6.040m [K=1.0000]
 Remarks:

ISOLUX DIAGRAM

NAME: Blackline 1414 profile 1m+ BL68.3K	TYPE:	WEIGHT:
SPEC.:	DIM.:	SERIAL No.:
MFR.: Lightrail	SUR.: 0.08*1	Shielding Angle:



C Range: 0 - 360DEG
 C Interval: 22.5DEG
 Test Speed: HIGH
 Temperature: 25.3DEG
 Operators:
 Test Date: 2023-04-25

γ Range: 0 - 180DEG
 γ Interval: 2.0DEG
 Test System: EVERFINE GO-2000B_V1 SYSTEM V2.00.450
 Humidity: 65.0%
 Test Distance: 6.040m [K=1.0000]
 Remarks:

LED Avg.L Report

NAME: Blackline 1414 profile 1m+ BL68.3K	TYPE:	WEIGHT:
SPEC.:	DIM.:	SERIAL No.:
MFR.:Lightrail	SUR.: 0.08*1	Shielding Angle:

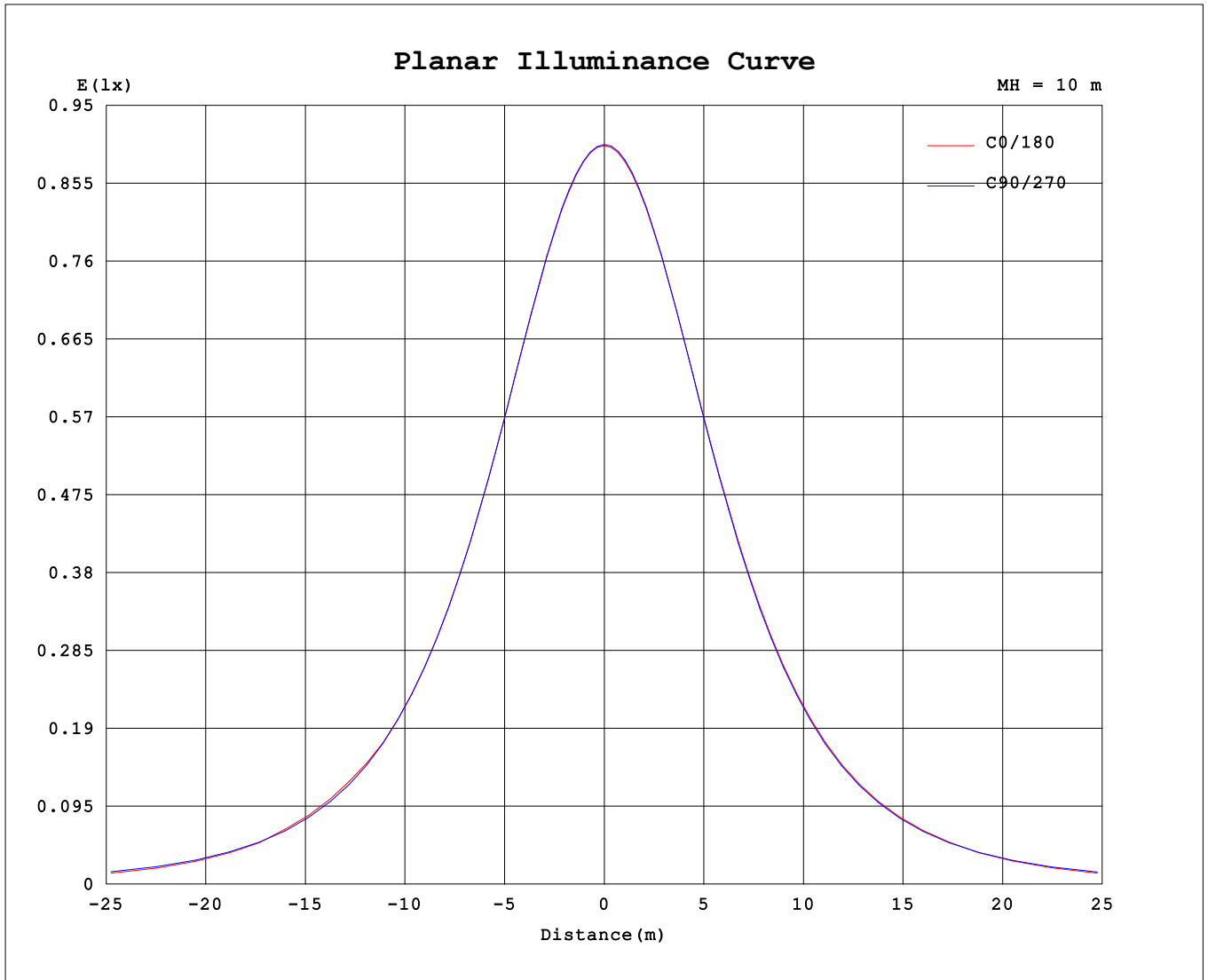
AvgL	cd/m2
L_0~180 (65) av	937
L_0~180 (75) av	620
L_0~180 (85) av	9
L_90~270 (65) av	988
L_90~270 (75) av	897
L_90~270 (85) av	794
L_45 (65) av	992
L_45 (75) av	885
L_45 (85) av	713

Standard: GB/T 29293-2012

C Range: 0 - 360DEG
 C Interval: 22.5DEG
 Test Speed: HIGH
 Temperature:25.3DEG
 Operators:
 Test Date:2023-04-25

γ Range: 0 - 180DEG
 γ Interval: 2.0DEG
 Test System:EVERFINE GO-2000B_V1 SYSTEM V2.00.450
 Humidity:65.0%
 Test Distance:6.040m [K=1.0000]
 Remarks:

Planar Illuminance Curve



C Range: 0 - 360DEG
 C Interval: 22.5DEG
 Test Speed: HIGH
 Temperature: 25.3DEG
 Operators:
 Test Date: 2023-04-25

γ Range: 0 - 180DEG
 γ Interval: 2.0DEG
 Test System: EVERFINE GO-2000B_V1 SYSTEM V2.00.450
 Humidity: 65.0%
 Test Distance: 6.040m [K=1.0000]
 Remarks:

LUMINOUS DISTRIBUTION INTENSITY DATA

NAME: Blackline 1414 profile 1m+ BL68.3K	TYPE:	WEIGHT:
SPEC.:	DIM.:	SERIAL No.:
MFR.:Lightrail	SUR.: 0.08*1	Shielding Angle:

Table--1

UNIT: cd

C (DEG) \ γ (DEG)	0	22.5	45	67.5	90	112.5	135	157.5	180	202.5	225	247.5	270	292.5	315	337.5			
0	89.9	89.9	89.9	89.9	89.9	89.9	89.9	89.9	89.9	89.9	89.9	89.9	89.9	89.9	89.9	89.9			
5	89.7	89.6	89.6	89.6	89.6	89.6	89.7	89.7	89.7	89.7	89.8	89.8	89.7	89.7	89.7	89.7			
10	88.3	88.4	88.3	88.4	88.4	88.5	88.4	88.4	88.4	88.5	88.6	88.5	88.5	88.4	88.4	88.4			
15	86.9	86.9	86.9	87.0	86.9	87.0	87.0	87.0	87.0	87.1	87.2	87.1	87.0	86.9	87.0	86.9			
20	83.9	83.9	83.8	83.9	83.9	84.1	84.0	84.0	84.0	84.1	84.1	83.9	83.9	83.8	83.9	83.9			
25	81.3	81.4	81.2	81.3	81.2	81.5	81.5	81.5	81.4	81.5	81.5	81.3	81.2	81.1	81.2	81.3			
30	76.6	76.7	76.5	76.5	76.5	76.8	76.8	76.9	76.8	76.8	76.8	76.5	76.4	76.2	76.5	76.6			
35	73.0	73.1	72.8	72.9	72.8	73.2	73.2	73.3	73.1	73.2	73.1	72.8	72.7	72.5	72.8	72.9			
40	66.8	66.9	66.6	66.7	66.6	67.0	67.1	67.2	67.0	67.0	66.9	66.5	66.4	66.2	66.6	66.7			
45	62.3	62.4	62.1	62.1	62.0	62.5	62.6	62.7	62.5	62.5	62.4	61.9	61.8	61.6	62.0	62.1			
50	55.7	55.0	54.6	54.7	54.6	55.1	55.2	55.4	55.1	55.0	54.9	54.4	54.3	54.1	54.4	54.7			
55	51.1	49.8	49.3	49.4	49.4	49.8	49.9	50.1	49.7	49.6	49.5	49.1	48.9	48.7	49.1	49.6			
60	40.6	41.8	40.8	41.0	41.0	41.5	41.5	41.6	41.0	41.1	41.0	40.6	40.5	40.2	40.6	41.8			
65	33.4	35.7	34.9	35.1	35.2	35.7	35.6	35.6	33.7	35.0	35.1	34.7	34.6	34.3	34.6	35.8			
70	21.9	26.2	25.8	26.2	26.3	26.7	26.4	26.3	22.3	25.7	25.9	25.6	25.6	25.2	25.5	26.2			
75	14.4	19.9	19.8	20.2	20.4	20.7	20.3	20.1	14.9	19.5	19.8	19.6	19.7	19.2	19.4	19.8			
80	4.57	10.9	11.2	11.8	12.0	12.2	11.7	11.2	4.98	10.6	11.0	11.2	11.3	10.9	10.8	10.7			
85	0.12	5.78	6.15	6.80	7.00	7.14	6.50	5.93	0.35	5.43	5.93	6.13	6.26	5.89	5.77	5.46			
90	0.03	1.09	1.40	1.72	1.82	1.78	1.26	0.84	0.04	0.69	1.03	1.35	1.49	1.33	1.26	1.03			
95	0.03	0.75	0.73	0.67	0.65	0.56	0.38	0.34	0.05	0.39	0.33	0.46	0.51	0.53	0.67	0.81			
100	0.03	0.60	0.49	0.29	0.25	0.19	0.15	0.20	0.06	0.33	0.14	0.20	0.19	0.27	0.46	0.64			
105	0.04	0.48	0.41	0.23	0.14	0.10	0.09	0.16	0.08	0.30	0.14	0.11	0.09	0.19	0.39	0.51			
110	0.06	0.28	0.35	0.20	0.09	0.10	0.09	0.14	0.09	0.18	0.14	0.09	0.08	0.17	0.33	0.29			
115	0.07	0.21	0.31	0.19	0.09	0.11	0.09	0.12	0.10	0.14	0.14	0.09	0.10	0.17	0.29	0.22			
120	0.10	0.18	0.22	0.17	0.09	0.12	0.11	0.12	0.13	0.14	0.14	0.10	0.12	0.17	0.22	0.18			
125	0.11	0.18	0.18	0.17	0.11	0.14	0.12	0.14	0.14	0.14	0.15	0.11	0.13	0.17	0.22	0.17			
130	0.13	0.17	0.18	0.18	0.13	0.16	0.14	0.16	0.15	0.14	0.16	0.13	0.15	0.17	0.21	0.16			
135	0.15	0.18	0.18	0.19	0.14	0.17	0.14	0.17	0.17	0.14	0.17	0.14	0.17	0.17	0.20	0.16			
140	0.16	0.19	0.18	0.20	0.16	0.19	0.16	0.19	0.19	0.16	0.19	0.16	0.19	0.18	0.20	0.17			
145	0.18	0.20	0.18	0.20	0.17	0.20	0.18	0.20	0.20	0.18	0.20	0.18	0.20	0.18	0.20	0.17			
150	0.19	0.22	0.18	0.22	0.19	0.22	0.19	0.22	0.22	0.19	0.22	0.19	0.22	0.19	0.21	0.19			
155	0.20	0.23	0.20	0.23	0.20	0.23	0.21	0.23	0.23	0.20	0.23	0.21	0.22	0.20	0.22	0.20			
160	0.22	0.24	0.22	0.24	0.22	0.25	0.22	0.24	0.24	0.22	0.24	0.22	0.25	0.21	0.24	0.21			
165	0.23	0.25	0.23	0.25	0.23	0.25	0.23	0.25	0.25	0.23	0.25	0.23	0.26	0.22	0.25	0.22			
170	0.24	0.26	0.24	0.26	0.24	0.26	0.24	0.26	0.26	0.24	0.26	0.24	0.26	0.24	0.26	0.23			
175	0.24	0.26	0.24	0.26	0.25	0.26	0.24	0.26	0.26	0.24	0.26	0.25	0.26	0.25	0.26	0.24			
180	0.25	0.26	0.26	0.26	0.26	0.26	0.26	0.26	0.26	0.26	0.26	0.26	0.26	0.26	0.26	0.25			

C Range: 0 - 360DEG
 C Interval: 22.5DEG
 Test Speed: HIGH
 Temperature:25.3DEG
 Operators:
 Test Date:2023-04-25

γ Range: 0 - 180DEG
 γ Interval: 2.0DEG
 Test System:EVERFINE GO-2000B_V1 SYSTEM V2.00.450
 Humidity:65.0%
 Test Distance:6.040m [K=1.0000]
 Remarks: