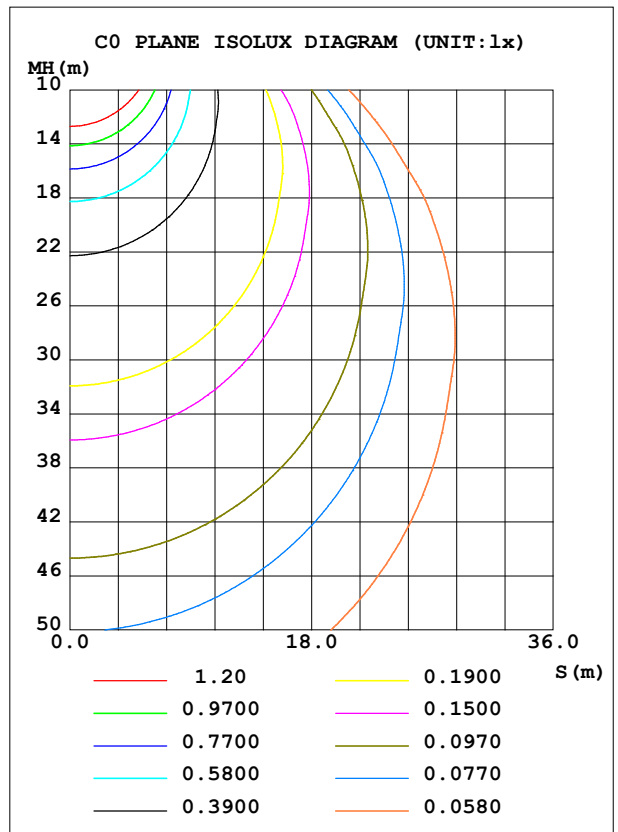
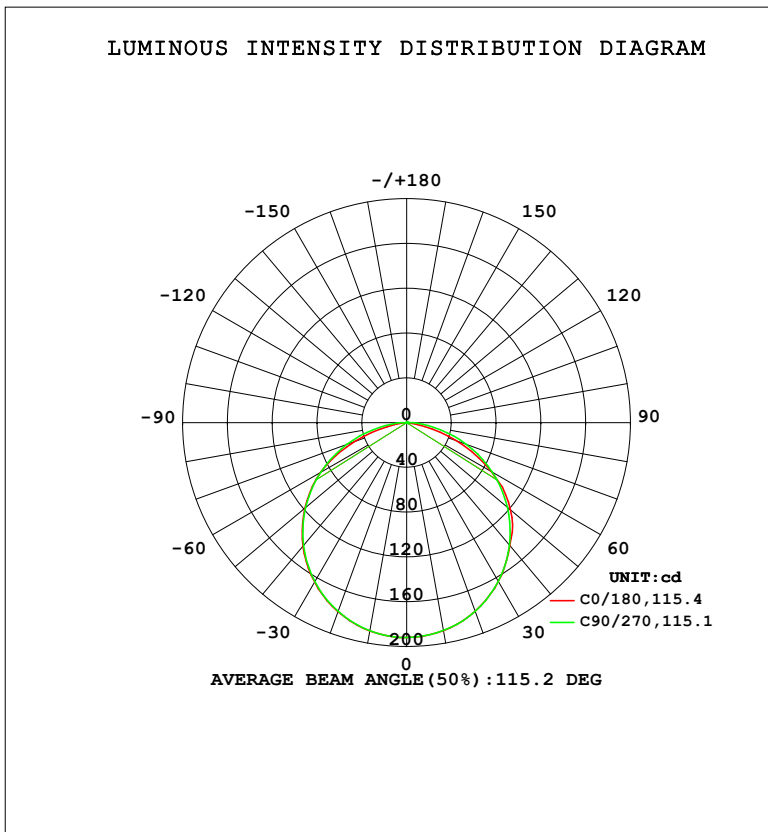


**LUMINAIRE PHOTOMETRIC TEST REPORT**

NAME: Blackline 1414 profile 1m + BL15.4K	TYPE:	WEIGHT:
SPEC.:	DIM.:	SERIAL No.:
MFR.:Lightrail	SUR.: 0.08*1	Shielding Angle:

DATA OF LAMP		PHOTOMETRIC DATA				Eff: 37.56 lm/W
MODEL	4000K	I <sub>max</sub> (cd)	191.9	S/MH (C0/180)	1.27	
NOMINAL POWER (W)	15	LOR (%)	100.0	S/MH (C90/270)	1.27	
RATED VOLTAGE (V)	24	TOTAL FLUX (lm)	567.76	η UP, DN (C0-180)	0.3, 49.8	
NOMINAL FLUX (lm)	567.758	CIE CLASS	DIRECT	η UP, DN (C180-360)	0.3, 49.6	
LAMPS INSIDE	1	η up (%)	0.6	CIBSE SHR NOM	1.25	
TEST VOLTAGE (V)	24	η down (%)	99.4	CIBSE SHR MAX	1.35	



C Range: 0 - 360DEG  
 C Interval: 22.5DEG  
 Test Speed: HIGH  
 Temperature: 25.3DEG  
 Operators:  
 Test Date: 2023-04-25

γ Range: 0 - 180DEG  
 γ Interval: 2.0DEG  
 Test System: EVERFINE GO-2000B\_V1 SYSTEM V2.00.450  
 Humidity: 65.0%  
 Test Distance: 6.040m [K=1.0000]  
 Remarks:

ZONAL FLUX DIAGRAM

ZONAL FLUX DIAGRAM:

$\gamma$	C0	C45	C90	C135	C180	C225	C270	C315	$\gamma$	$\Phi$ zone	$\Phi$ total	%lum,lamp
10	188.7	188.3	188.5	188.7	188.9	189.0	188.7	188.6	0- 10	18.17	18.17	3.2,3.2
20	179.2	178.9	179.3	179.4	179.6	179.6	179.3	179.1	10- 20	52.15	70.32	12.4,12.4
30	163.9	163.6	163.8	164.1	164.5	164.6	164.0	163.9	20- 30	79.45	149.8	26.4,26.4
40	143.3	142.9	142.9	143.6	144.0	144.1	143.3	143.1	30- 40	96.57	246.3	43.4,43.4
50	121.2	117.3	117.5	118.2	118.7	118.7	117.9	117.5	40- 50	101.4	347.7	61.2,61.2
60	87.28	87.79	88.35	88.94	88.83	89.30	88.69	88.05	50- 60	93.06	440.8	77.6,77.6
70	47.23	55.70	56.51	56.86	49.11	56.92	56.57	55.62	60- 70	71.57	512.3	90.2,90.2
80	10.09	23.69	24.94	24.36	11.27	24.48	24.70	23.24	70- 80	40.70	553.0	97.4,97.4
90	0.0911	3.314	3.987	2.312	0.1093	2.626	3.536	2.337	80- 90	11.44	564.5	99.4,99.4
100	0.1092	1.052	0.1449	0.3021	0.1562	0.2997	0.1528	1.051	90-100	1.050	565.5	99.6,99.6
110	0.1821	0.8940	0.1791	0.2470	0.2264	0.3102	0.2056	0.8404	100-110	0.5105	566.0	99.7,99.7
120	0.2601	0.5526	0.2528	0.2862	0.2941	0.3155	0.2767	0.6091	110-120	0.3757	566.4	99.8,99.8
130	0.3382	0.3496	0.3266	0.3414	0.3618	0.3550	0.3452	0.4597	120-130	0.3195	566.7	99.8,99.8
140	0.4058	0.3890	0.3924	0.3966	0.4346	0.4207	0.4163	0.4544	130-140	0.3017	567.0	99.9,99.9
150	0.4657	0.4600	0.4635	0.4649	0.4971	0.4864	0.4848	0.4834	140-150	0.2791	567.3	99.9,99.9
160	0.5178	0.5126	0.5268	0.5226	0.5491	0.5442	0.5454	0.5333	150-160	0.2322	567.5	100,100
170	0.5620	0.5625	0.5769	0.5647	0.5907	0.5889	0.6006	0.5858	160-170	0.1568	567.7	100,100
180	0.5907	0.5915	0.6059	0.5989	0.5959	0.5994	0.6085	0.5989	170-180	0.0560	567.8	100,100
DEG	LUMINOUS INTENSITY:cd									UNIT:lm		

Conical surface Flux(90deg): 307.4 lm

%lum = 54.1%

%lamp = 54.1%

Conical surface Flux(120deg): 440.77 lm

%lum = 77.6%

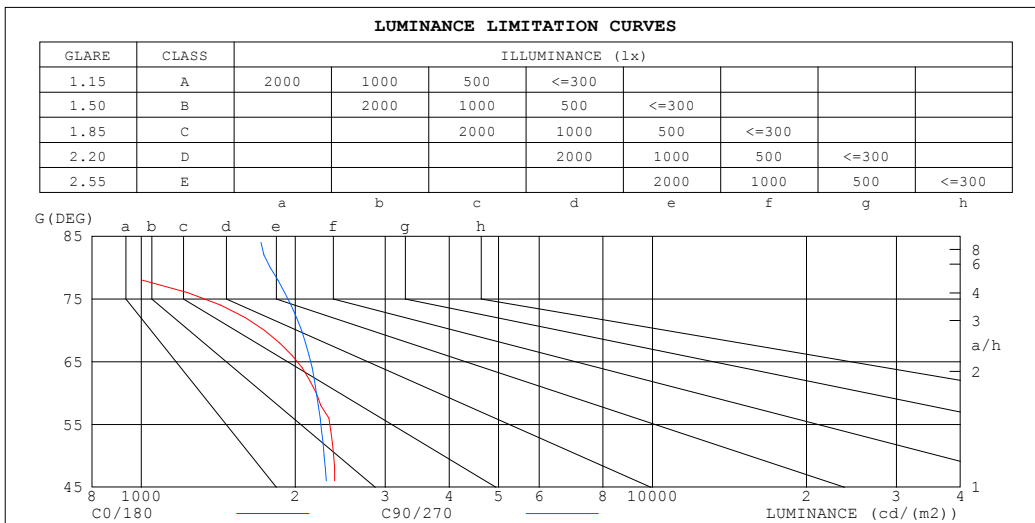
%lamp = 77.6%

C Range: 0 - 360DEG  
 C Interval: 22.5DEG  
 Test Speed: HIGH  
 Temperature:25.3DEG  
 Operators:  
 Test Date:2023-04-25

$\gamma$  Range: 0 - 180DEG  
 $\gamma$  Interval: 2.0DEG  
 Test System:EVERFINE GO-2000B\_V1 SYSTEM V2.00.450  
 Humidity:65.0%  
 Test Distance:6.040m [K=1.0000]  
 Remarks:

**LUMINANCE LIMITATION CURVES**

<b>NAME:</b> Blackline 1414 profile 1m + BL15.4K	<b>TYPE:</b>	<b>WEIGHT:</b>
<b>SPEC.:</b>	<b>DIM.:</b>	<b>SERIAL No.:</b>
<b>MFR.:</b> Lightrail	<b>SUR.:</b> 0.08*1	<b>Shielding Angle:</b>



LUMINANCE cd/(m2)		
G (DEG)	C0/180	C90/270
85	41	2057
80	733	1789
75	1521	2091
70	1741	2058
65	2141	2238
60	2201	2201
55	2405	2308
50	2377	2278
45	2424	2347

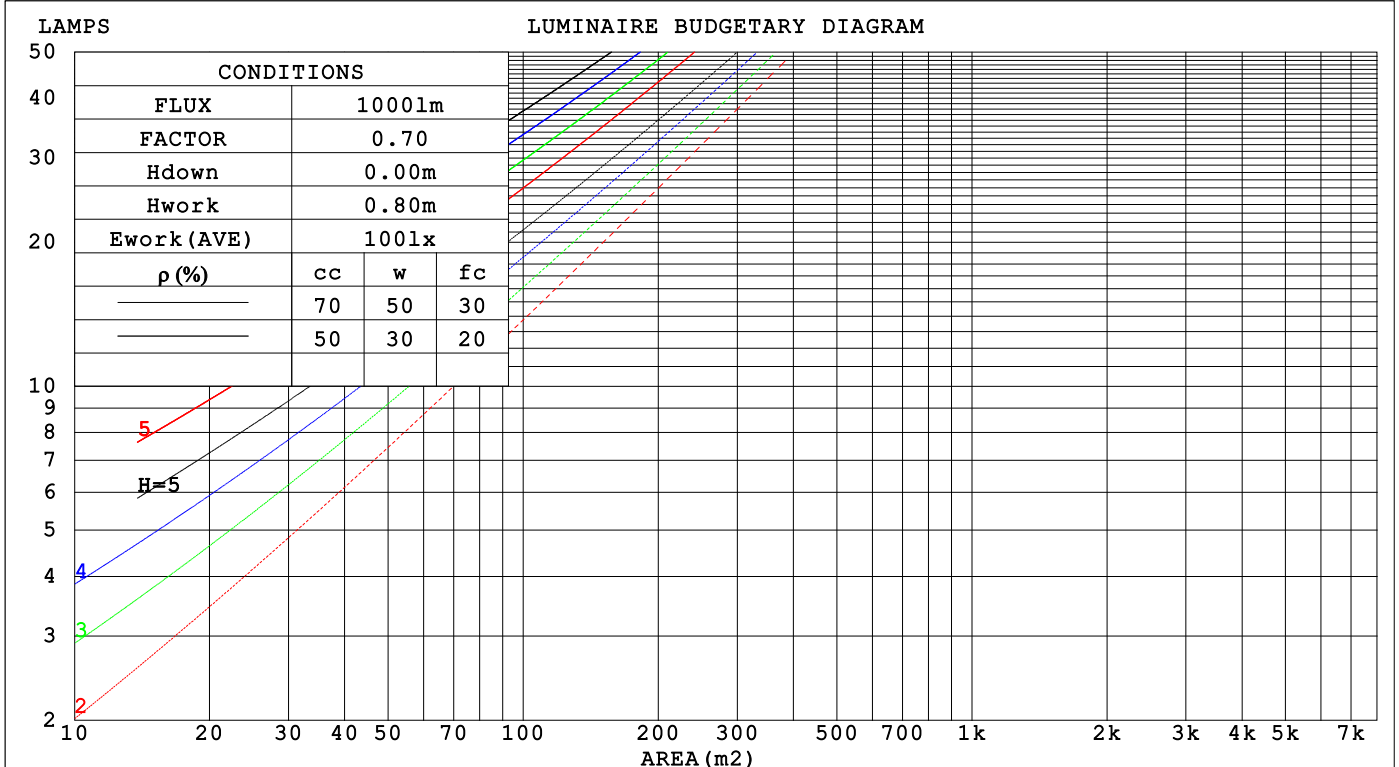
C Range: 0 - 360DEG  
 C Interval: 22.5DEG  
 Test Speed: HIGH  
 Temperature: 25.3DEG  
 Operators:  
 Test Date: 2023-04-25

$\gamma$  Range: 0 - 180DEG  
 $\gamma$  Interval: 2.0DEG  
 Test System: EVERFINE GO-2000B\_V1 SYSTEM V2.00.450  
 Humidity: 65.0%  
 Test Distance: 6.040m [K=1.0000]  
 Remarks:

**CU AND LUMINAIRE BUDGETARY ESTIMATE DIAGRAM**

NAME: Blackline 1414 profile 1m + BL15.4K	TYPE:	WEIGHT:
SPEC.:	DIM.:	SERIAL No.:
MFR.:Lightrail	SUR.: 0.08*1	Shielding Angle:

pcc	80%			70%			50%			30%			10%			0
pw	50%	30%	10%	50%	30%	10%	50%	30%	10%	50%	30%	10%	50%	30%	10%	0
pfc	20%			20%			20%			20%			20%			0
RCR	RCR:Room Cavity Ratio						Coefficients of Utilization(CU)									
0.0	1.19	1.19	1.19	1.16	1.16	1.16	1.11	1.11	1.11	1.06	1.06	1.06	1.02	1.02	1.02	.99
1.0	1.04	.99	.95	1.01	.97	.94	.97	.94	.91	.93	.90	.88	.89	.87	.85	.83
2.0	.90	.83	.77	.88	.82	.76	.84	.79	.74	.81	.77	.73	.78	.74	.71	.69
3.0	.79	.71	.64	.77	.70	.63	.74	.68	.62	.71	.66	.61	.69	.64	.60	.58
4.0	.70	.61	.54	.68	.60	.54	.66	.58	.53	.63	.57	.52	.61	.56	.51	.49
5.0	.62	.53	.46	.61	.52	.46	.59	.51	.45	.57	.50	.45	.55	.49	.44	.42
6.0	.56	.47	.40	.55	.46	.40	.53	.45	.40	.51	.44	.39	.50	.44	.39	.37
7.0	.51	.42	.36	.50	.41	.35	.48	.41	.35	.47	.40	.35	.45	.39	.34	.32
8.0	.46	.38	.32	.45	.37	.32	.44	.37	.31	.43	.36	.31	.42	.35	.31	.29
9.0	.42	.34	.28	.42	.34	.28	.40	.33	.28	.39	.33	.28	.38	.32	.28	.26
10.0	.39	.31	.26	.38	.31	.26	.37	.30	.26	.36	.30	.25	.36	.30	.25	.23



C Range: 0 - 360DEG  
 C Interval: 22.5DEG  
 Test Speed: HIGH  
 Temperature:25.3DEG  
 Operators:  
 Test Date:2023-04-25

γ Range: 0 - 180DEG  
 γ Interval: 2.0DEG  
 Test System:EVERFINE GO-2000B\_V1 SYSTEM V2.00.450  
 Humidity:65.0%  
 Test Distance:6.040m [K=1.0000]  
 Remarks:

WEC AND CCEC

NAME: Blackline 1414 profile 1m + BL15.4K	TYPE:	WEIGHT:
SPEC.:	DIM.:	SERIAL No.:
MFR.:Lightrail	SUR.: 0.08*1	Shielding Angle:

$\rho_{CC}$	80%			70%			50%			30%			10%			0
$\rho_w$	50%	30%	10%	50%	30%	10%	50%	30%	10%	50%	30%	10%	50%	30%	10%	0
$\rho_{fc}$	20%			20%			20%			20%			20%			0
RCR	RCR:Room Cavity Ratio						Wall Exitance Coefficients (WEC)									
0.0																
1.0	.314	.178	.056	.306	.175	.056	.293	.168	.054	.280	.162	.052	.269	.156	.050	
2.0	.295	.161	.050	.288	.159	.049	.276	.154	.048	.265	.149	.047	.255	.144	.045	
3.0	.272	.145	.043	.267	.143	.043	.256	.139	.042	.246	.135	.041	.237	.131	.041	
4.0	.251	.131	.038	.246	.129	.038	.237	.125	.037	.228	.122	.037	.220	.119	.036	
5.0	.232	.118	.034	.228	.117	.034	.219	.114	.034	.211	.111	.033	.204	.109	.033	
6.0	.215	.108	.031	.211	.107	.031	.204	.104	.030	.196	.102	.030	.190	.100	.030	
7.0	.200	.099	.028	.196	.098	.028	.190	.096	.028	.183	.094	.027	.178	.092	.027	
8.0	.187	.091	.026	.183	.090	.026	.177	.089	.025	.172	.087	.025	.166	.085	.025	
9.0	.175	.085	.024	.172	.084	.024	.167	.082	.023	.161	.081	.023	.157	.080	.023	
10.0	.164	.079	.022	.162	.078	.022	.157	.077	.022	.152	.076	.021	.148	.074	.021	

$\rho_{CC}$	80%			70%			50%			30%			10%			0
$\rho_w$	50%	30%	10%	50%	30%	10%	50%	30%	10%	50%	30%	10%	50%	30%	10%	0
$\rho_{fc}$	20%			20%			20%			20%			20%			0
RCR	RCR:Room Cavity Ratio						Ceiling Cavity Exitance Coefficients (CCEC)									
0.0	.195	.195	.195	.167	.167	.167	.114	.114	.114	.065	.065	.065	.021	.021	.021	
1.0	.185	.161	.139	.158	.138	.119	.108	.095	.082	.062	.055	.048	.020	.018	.016	
2.0	.177	.136	.102	.152	.117	.088	.104	.081	.062	.060	.047	.036	.019	.015	.012	
3.0	.169	.119	.078	.145	.102	.068	.100	.071	.048	.058	.042	.028	.019	.014	.009	
4.0	.162	.106	.063	.139	.091	.054	.096	.064	.038	.055	.037	.023	.018	.012	.007	
5.0	.154	.095	.051	.133	.082	.045	.091	.058	.032	.053	.034	.019	.017	.011	.006	
6.0	.147	.087	.043	.127	.075	.038	.087	.053	.027	.051	.031	.016	.016	.010	.005	
7.0	.140	.080	.038	.121	.069	.033	.083	.049	.023	.048	.029	.014	.016	.009	.005	
8.0	.134	.074	.033	.115	.064	.029	.080	.045	.020	.046	.027	.012	.015	.009	.004	
9.0	.128	.069	.030	.110	.060	.026	.076	.042	.018	.044	.025	.011	.014	.008	.004	
10.0	.122	.065	.027	.105	.056	.023	.073	.040	.017	.043	.023	.010	.014	.008	.003	

C Range: 0 - 360DEG  
 C Interval: 22.5DEG  
 Test Speed: HIGH  
 Temperature:25.3DEG  
 Operators:  
 Test Date:2023-04-25

$\gamma$  Range: 0 - 180DEG  
 $\gamma$  Interval: 2.0DEG  
 Test System:EVERFINE GO-2000B\_V1 SYSTEM V2.00.450  
 Humidity:65.0%  
 Test Distance:6.040m [K=1.0000]  
 Remarks:

**UGR(Unified Glare Rating) Table**

NAME: Blackline 1414 profile 1m + BL15.4K		TYPE:				WEIGHT:				
SPEC.:		DIM.:				SERIAL No.:				
MFR.:Lightrail		SUR.: 0.08*1				Shielding Angle:				
ceiling/cavity	0.7	0.7	0.5	0.5	0.3	0.7	0.7	0.5	0.5	0.3
walls	0.5	0.3	0.5	0.3	0.3	0.5	0.3	0.5	0.3	0.3
working plane	0.2	0.2	0.2	0.2	0.2	0.2	0.2	0.2	0.2	0.2
Room dimensions	Viewed crosswise					Viewed endwise				
x = 2H y = 2H	17.8	19.3	18.1	19.6	19.8	17.7	19.2	17.9	19.4	19.6
3H	19.2	20.6	19.5	20.9	21.1	19.2	20.7	19.6	20.9	21.2
4H	19.7	21.0	20.0	21.3	21.5	19.9	21.2	20.2	21.5	21.8
6H	19.8	21.1	20.2	21.4	21.7	20.4	21.6	20.7	21.9	22.2
8H	19.8	21.0	20.1	21.3	21.6	20.5	21.7	20.9	22.0	22.3
12H	19.7	20.9	20.1	21.2	21.5	20.6	21.8	21.0	22.1	22.4
4H 2H	18.4	19.8	18.7	20.0	20.3	18.3	19.6	18.6	19.9	20.2
3H	20.1	21.2	20.4	21.5	21.9	20.1	21.2	20.4	21.5	21.9
4H	20.7	21.8	21.1	22.1	22.4	20.8	21.9	21.2	22.2	22.6
6H	21.0	22.0	21.4	22.3	22.7	21.4	22.4	21.8	22.8	23.1
8H	21.0	21.9	21.4	22.3	22.7	21.7	22.5	22.1	22.9	23.3
12H	21.0	21.8	21.4	22.2	22.6	21.8	22.6	22.3	23.0	23.4
8H 4H	21.0	21.9	21.4	22.2	22.6	21.1	22.0	21.5	22.4	22.8
6H	21.5	22.2	21.9	22.6	23.1	21.9	22.6	22.3	23.0	23.5
8H	21.6	22.3	22.1	22.7	23.2	22.2	22.8	22.6	23.3	23.7
12H	21.7	22.2	22.1	22.7	23.2	22.4	23.0	22.9	23.4	23.9
12H 4H	21.0	21.8	21.4	22.2	22.6	21.1	21.9	21.6	22.3	22.8
6H	21.6	22.2	22.0	22.6	23.1	21.9	22.6	22.4	23.0	23.5
8H	21.7	22.3	22.2	22.7	23.2	22.3	22.8	22.8	23.3	23.8
Variations with the observer position at spacings(CIE Pub.117):										
S = 1.0H	+ 0.2 / - 0.2					+ 0.1 / - 0.2				
1.5H	+ 0.2 / - 0.4					+ 0.2 / - 0.3				
2.0H	+ 0.2 / - 0.4					+ 0.1 / - 0.3				

CIE Pub.117, 567.8 lm Total Lamp Luminous Flux Correct (8log(F/F0) = -2.0)  
 Area: 0.08 m2

C Range: 0 - 360DEG  
 C Interval: 22.5DEG  
 Test Speed: HIGH  
 Temperature:25.3DEG  
 Operators:  
 Test Date:2023-04-25

γ Range: 0 - 180DEG  
 γ Interval: 2.0DEG  
 Test System:EVERFINE GO-2000B\_V1 SYSTEM V2.00.450  
 Humidity:65.0%  
 Test Distance:6.040m [K=1.0000]  
 Remarks:

**UTILIZATION FACTORS TABLE**

NAME: Blackline 1414 profile 1m + BL15.4K	TYPE:	WEIGHT:
SPEC.:	DIM.:	SERIAL No.:
MFR.:Lightrail	SUR.: 0.08*1	Shielding Angle:

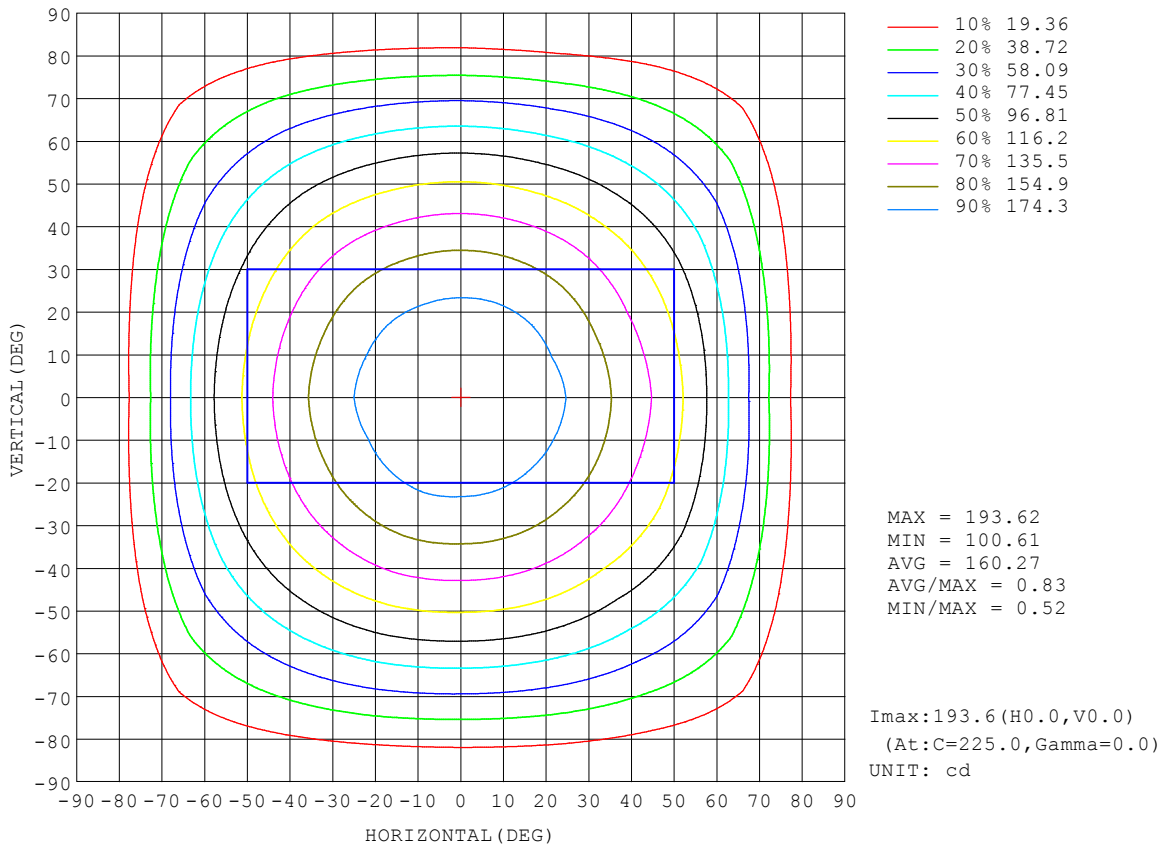
REFLECTANCE										
Ceiling	0.8	0.8	0.8	0.7	0.7	0.7	0.5	0.5	0.5	0
Walls	0.7	0.5	0.3	0.7	0.5	0.3	0.7	0.5	0.3	0
Working plane	0.2	0.2	0.2	0.2	0.2	0.2	0.2	0.2	0.2	0
ROOM INDEX	UTILIZATION FACTORS (PERCENT) $k(RI) \times RCR = 5$									
k = 0.60	57	45	38	56	45	38	55	44	38	31
0.80	67	55	48	66	55	47	64	54	47	40
1.00	75	64	57	74	63	56	72	65	56	49
1.25	82	72	64	81	71	64	78	70	63	56
1.50	87	77	70	86	76	70	83	75	69	61
2.00	94	86	79	93	84	78	89	82	77	69
2.50	98	90	84	96	89	83	92	86	81	73
3.00	102	95	89	100	93	88	95	90	86	77
4.00	106	100	95	103	98	94	99	95	91	82
5.00	108	103	99	106	101	98	101	98	95	85
ROOM INDEX	UF(total)									Direct
According to DIN EN 13032-2 2004			Suspended				SHRNOM = 1.25			

C Range: 0 - 360DEG  
 C Interval: 22.5DEG  
 Test Speed: HIGH  
 Temperature:25.3DEG  
 Operators:  
 Test Date:2023-04-25

$\gamma$  Range: 0 - 180DEG  
 $\gamma$  Interval: 2.0DEG  
 Test System:EVERFINE GO-2000B\_V1 SYSTEM V2.00.450  
 Humidity:65.0%  
 Test Distance:6.040m [K=1.0000]  
 Remarks:

**ISOCANDELA DIAGRAM**

NAME: Blackline 1414 profile 1m + BL15.4K	TYPE:	WEIGHT:
SPEC.:	DIM.:	SERIAL No.:
MFR.:Lightrail	SUR.: 0.08*1	Shielding Angle:



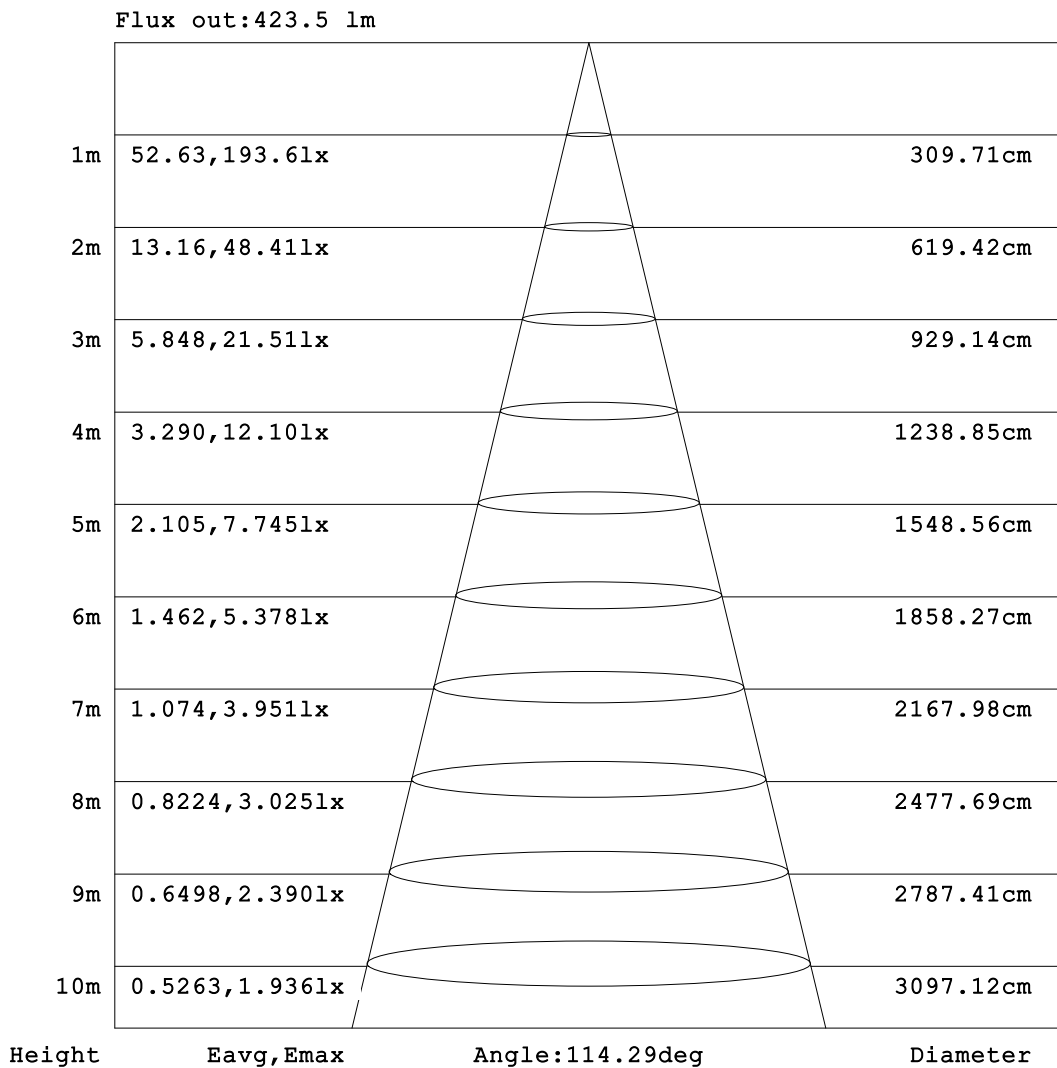
C Range: 0 - 360DEG  
 C Interval: 22.5DEG  
 Test Speed: HIGH  
 Temperature:25.3DEG  
 Operators:  
 Test Date:2023-04-25

γ Range: 0 - 180DEG  
 γ Interval: 2.0DEG  
 Test System:EVERFINE GO-2000B\_V1 SYSTEM V2.00.450  
 Humidity:65.0%  
 Test Distance:6.040m [K=1.0000]  
 Remarks:



**AAI Figure**

NAME: Blackline 1414 profile 1m + BL15.4K	TYPE:	WEIGHT:
SPEC.:	DIM.:	SERIAL No.:
MFR.:Lightrail	SUR.: 0.08*1	Shielding Angle:



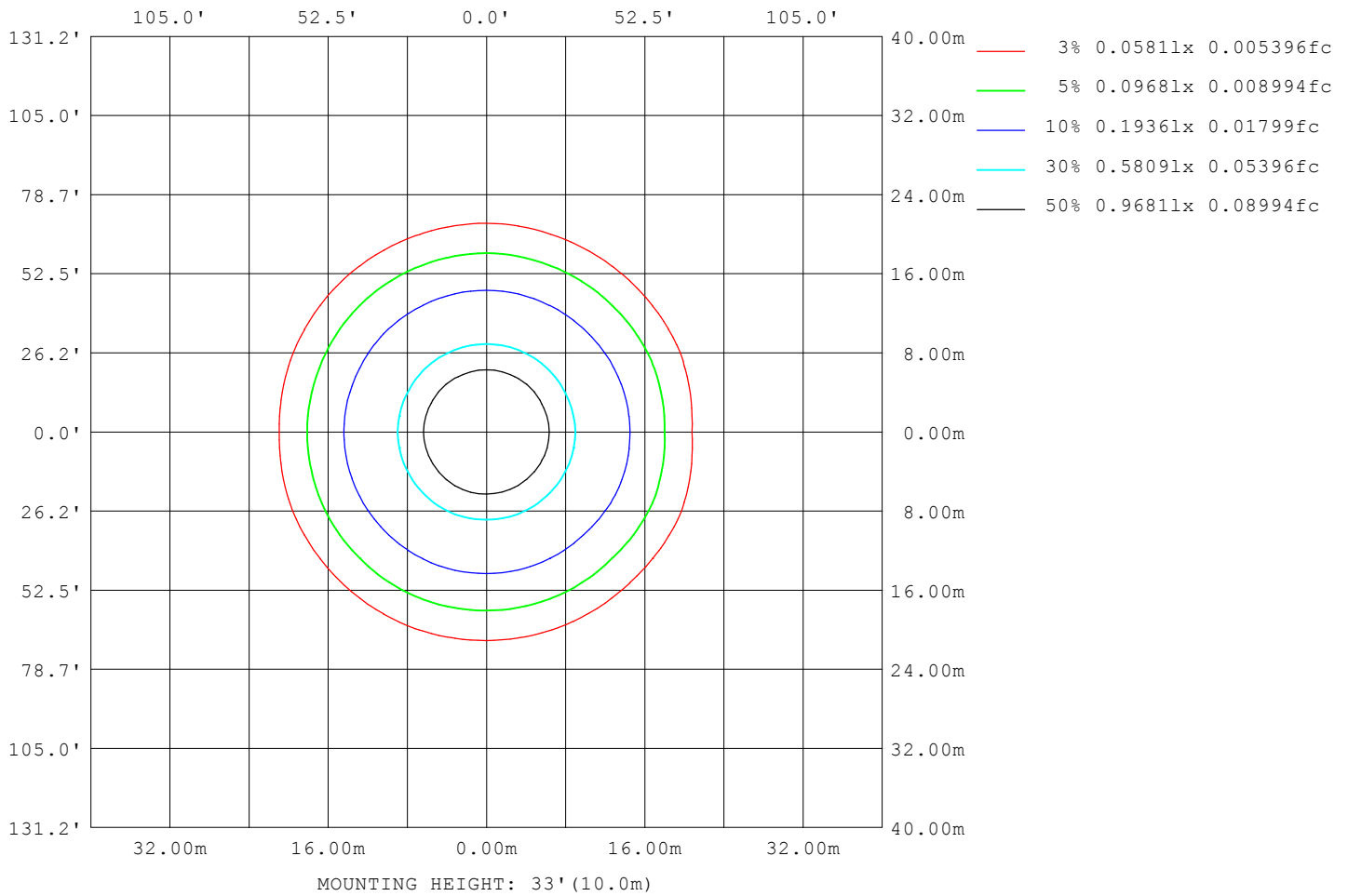
Note: The Curves indicate the illuminated area and the average illumination when the luminaire is at different distance.

C Range: 0 - 360DEG  
 C Interval: 22.5DEG  
 Test Speed: HIGH  
 Temperature: 25.3DEG  
 Operators:  
 Test Date: 2023-04-25

γ Range: 0 - 180DEG  
 γ Interval: 2.0DEG  
 Test System: EVERFINE GO-2000B\_V1 SYSTEM V2.00.450  
 Humidity: 65.0%  
 Test Distance: 6.040m [K=1.0000]  
 Remarks:

**ISOLUX DIAGRAM**

<b>NAME:</b> Blackline 1414 profile 1m + BL15.4K	<b>TYPE:</b>	<b>WEIGHT:</b>
<b>SPEC.:</b>	<b>DIM.:</b>	<b>SERIAL No.:</b>
<b>MFR.:</b> Lightrail	<b>SUR.:</b> 0.08*1	<b>Shielding Angle:</b>



C Range: 0 - 360DEG  
 C Interval: 22.5DEG  
 Test Speed: HIGH  
 Temperature: 25.3DEG  
 Operators:  
 Test Date: 2023-04-25

γ Range: 0 - 180DEG  
 γ Interval: 2.0DEG  
 Test System: EVERFINE GO-2000B\_V1 SYSTEM V2.00.450  
 Humidity: 65.0%  
 Test Distance: 6.040m [K=1.0000]  
 Remarks:

LED Avg.L Report

NAME: Blackline 1414 profile 1m + BL15.4K	TYPE:	WEIGHT:
SPEC.:	DIM.:	SERIAL No.:
MFR.:Lightrail	SUR.: 0.08*1	Shielding Angle:

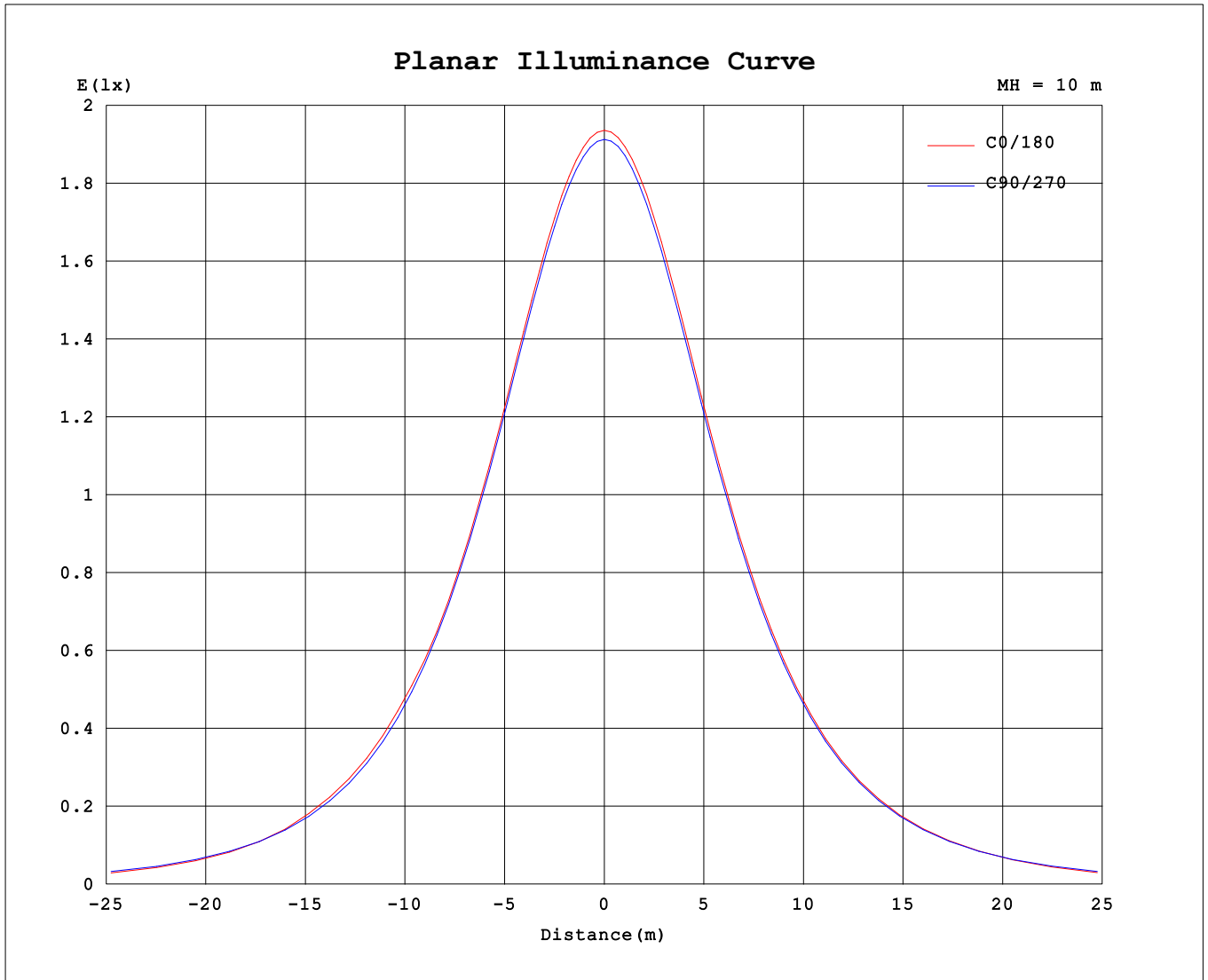
AvgL	cd/m2
L_0~180 (65) av	2034
L_0~180 (75) av	1363
L_0~180 (85) av	26
L_90~270 (65) av	2154
L_90~270 (75) av	1942
L_90~270 (85) av	1714
L_45 (65) av	2151
L_45 (75) av	1920
L_45 (85) av	1520

Standard: GB/T 29293-2012

C Range: 0 - 360DEG  
 C Interval: 22.5DEG  
 Test Speed: HIGH  
 Temperature:25.3DEG  
 Operators:  
 Test Date:2023-04-25

γ Range: 0 - 180DEG  
 γ Interval: 2.0DEG  
 Test System:EVERFINE GO-2000B\_V1 SYSTEM V2.00.450  
 Humidity:65.0%  
 Test Distance:6.040m [K=1.0000]  
 Remarks:

**Planar Illuminance Curve**



C Range: 0 - 360DEG  
 C Interval: 22.5DEG  
 Test Speed: HIGH  
 Temperature:25.3DEG  
 Operators:  
 Test Date:2023-04-25

$\gamma$  Range: 0 - 180DEG  
 $\gamma$  Interval: 2.0DEG  
 Test System:EVERFINE GO-2000B\_V1 SYSTEM V2.00.450  
 Humidity:65.0%  
 Test Distance:6.040m [K=1.0000]  
 Remarks:

LUMINOUS DISTRIBUTION INTENSITY DATA

NAME: Blackline 1414 profile 1m + BL15.4K	TYPE:	WEIGHT:
SPEC.:	DIM.:	SERIAL No.:
MFR.:Lightrail	SUR.: 0.08*1	Shielding Angle:

Table--1

UNIT: cd

C (DEG) \ γ (DEG)	0	22.5	45	67.5	90	112.5	135	157.5	180	202.5	225	247.5	270	292.5	315	337.5			
0	192	192	192	192	192	192	192	192	192	192	192	192	192	192	192	192			
5	191	191	191	191	191	191	191	192	191	192	192	192	192	191	191	191			
10	189	189	188	188	189	189	189	189	189	189	189	189	189	188	189	189			
15	186	185	185	186	186	186	186	186	186	186	186	186	186	185	185	185			
20	179	179	179	179	179	179	179	180	180	179	180	179	179	179	179	179			
25	174	174	174	174	174	174	174	174	174	174	174	174	174	174	174	174			
30	164	164	164	164	164	164	164	165	165	164	165	164	164	163	164	164			
35	156	156	156	156	156	156	157	157	157	157	157	156	156	156	156	156			
40	143	144	143	143	143	144	144	144	144	144	144	143	143	143	143	143			
45	136	134	133	133	133	134	134	135	134	134	134	134	134	133	133	134			
50	121	120	117	118	118	118	118	119	119	118	119	118	118	117	118	120			
55	109	110	106	106	106	107	107	108	107	107	107	107	107	106	106	109			
60	87.3	91.4	87.8	88.4	88.4	89.1	88.9	89.7	88.8	88.6	89.3	88.6	88.7	87.4	88.0	90.0			
65	71.7	78.2	75.3	75.9	75.9	76.6	76.5	76.9	74.0	76.0	76.6	76.2	76.2	74.9	75.4	76.9			
70	47.2	57.7	55.7	56.4	56.5	57.0	56.9	57.0	49.1	56.2	56.9	56.6	56.6	55.2	55.6	56.4			
75	31.2	43.9	42.5	43.3	43.4	43.8	43.6	43.6	32.9	42.8	43.7	43.4	43.4	42.0	42.4	42.6			
80	10.1	24.0	23.7	24.8	24.9	24.7	24.4	24.2	11.3	23.5	24.5	24.6	24.7	23.0	23.2	22.8			
85	0.29	12.6	13.0	14.2	14.4	13.7	13.1	12.8	0.94	12.1	13.4	13.9	14.1	12.2	12.2	11.5			
90	0.09	2.57	3.31	4.05	3.99	2.87	2.31	1.75	0.11	1.63	2.63	3.31	3.54	2.15	2.34	2.08			
95	0.09	1.64	1.42	1.41	1.13	0.23	0.34	0.70	0.12	0.72	0.57	0.79	0.87	0.46	1.12	1.71			
100	0.11	1.49	1.05	0.45	0.14	0.17	0.30	0.61	0.16	0.68	0.30	0.18	0.15	0.41	1.05	1.48			
105	0.14	1.23	1.01	0.45	0.15	0.19	0.30	0.49	0.18	0.59	0.30	0.18	0.17	0.41	0.99	1.22			
110	0.18	0.78	0.89	0.45	0.18	0.23	0.25	0.29	0.23	0.37	0.31	0.20	0.21	0.41	0.84	0.75			
115	0.21	0.60	0.81	0.44	0.21	0.25	0.24	0.28	0.25	0.30	0.31	0.23	0.23	0.41	0.76	0.57			
120	0.26	0.44	0.55	0.44	0.25	0.28	0.29	0.30	0.29	0.28	0.32	0.26	0.28	0.41	0.61	0.43			
125	0.30	0.40	0.42	0.44	0.28	0.31	0.31	0.33	0.32	0.29	0.33	0.28	0.31	0.41	0.51	0.40			
130	0.34	0.40	0.35	0.44	0.33	0.36	0.34	0.37	0.36	0.32	0.35	0.32	0.35	0.41	0.46	0.38			
135	0.36	0.40	0.35	0.45	0.35	0.38	0.36	0.39	0.39	0.36	0.38	0.35	0.37	0.41	0.45	0.38			
140	0.41	0.43	0.39	0.46	0.39	0.43	0.40	0.43	0.43	0.40	0.42	0.39	0.42	0.42	0.45	0.40			
145	0.43	0.45	0.42	0.47	0.42	0.45	0.43	0.46	0.46	0.43	0.45	0.42	0.44	0.43	0.46	0.42			
150	0.47	0.49	0.46	0.49	0.46	0.49	0.46	0.49	0.50	0.46	0.49	0.46	0.48	0.46	0.48	0.46			
155	0.49	0.51	0.48	0.51	0.49	0.52	0.49	0.52	0.52	0.49	0.51	0.49	0.51	0.48	0.51	0.48			
160	0.52	0.54	0.51	0.54	0.53	0.55	0.52	0.55	0.55	0.52	0.54	0.52	0.55	0.51	0.53	0.51			
165	0.54	0.56	0.53	0.56	0.55	0.57	0.54	0.57	0.56	0.53	0.56	0.54	0.57	0.53	0.56	0.53			
170	0.56	0.59	0.56	0.59	0.58	0.60	0.56	0.59	0.59	0.56	0.59	0.57	0.60	0.56	0.59	0.56			
175	0.58	0.60	0.58	0.60	0.59	0.61	0.58	0.60	0.60	0.57	0.60	0.58	0.61	0.58	0.60	0.57			
180	0.59	0.60	0.59	0.60	0.61	0.61	0.60	0.60	0.60	0.59	0.60	0.60	0.61	0.60	0.60	0.59			

C Range: 0 - 360DEG  
 C Interval: 22.5DEG  
 Test Speed: HIGH  
 Temperature:25.3DEG  
 Operators:  
 Test Date:2023-04-25

γ Range: 0 - 180DEG  
 γ Interval: 2.0DEG  
 Test System:EVERFINE GO-2000B\_V1 SYSTEM V2.00.450  
 Humidity:65.0%  
 Test Distance:6.040m [K=1.0000]  
 Remarks: