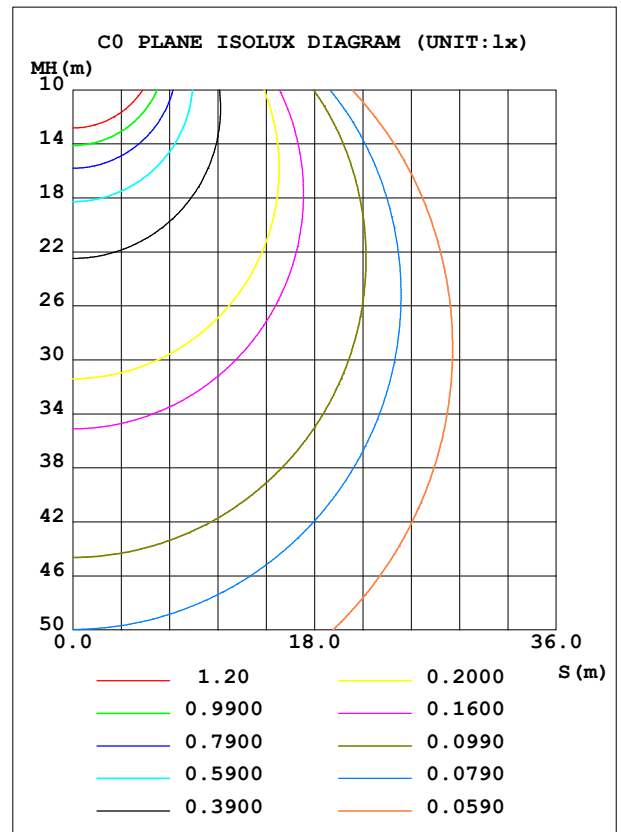
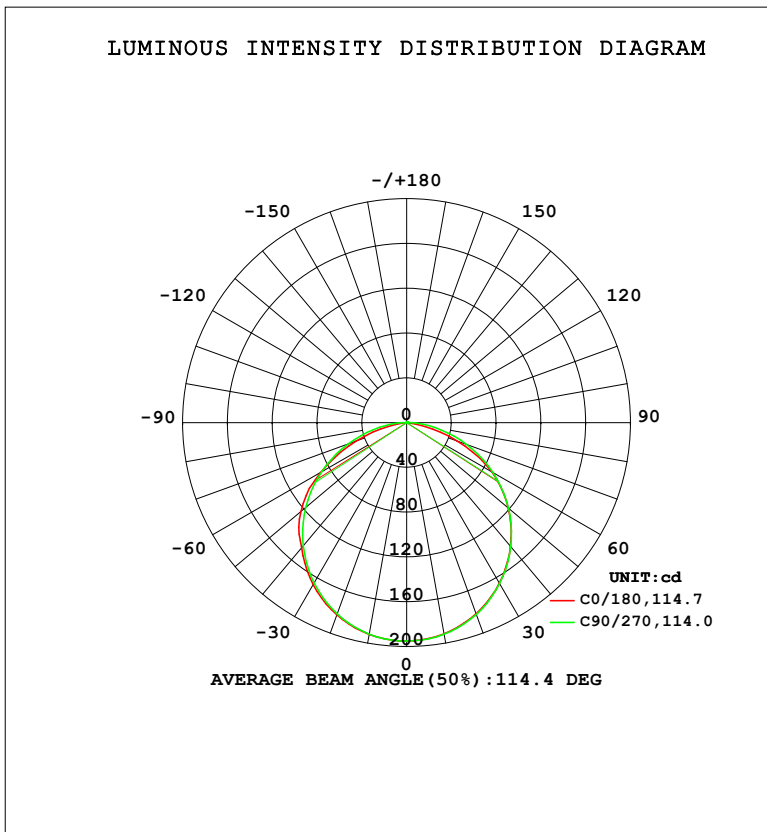


LUMINAIRE PHOTOMETRIC TEST REPORT

NAME: Blackline 1414 profile 1m + BL15.3K	TYPE:	WEIGHT:
SPEC.:	DIM.:	SERIAL No.:
MFR.:Lightrail	SUR.: 0.08*1	Shielding Angle:

DATA OF LAMP		PHOTOMETRIC DATA				Eff: 37.89 lm/W
MODEL	3000K	I _{max} (cd)	195.1	S/MH (C0/180)	1.27	
NOMINAL POWER (W)	15	LOR (%)	100.0	S/MH (C90/270)	1.26	
RATED VOLTAGE (V)	24	TOTAL FLUX (lm)	572.40	η UP, DN (C0-180)	0.3, 49.9	
NOMINAL FLUX (lm)	572.389	CIE CLASS	DIRECT	η UP, DN (C180-360)	0.3, 49.5	
LAMPS INSIDE	1	η up (%)	0.6	CIBSE SHR NOM	1.25	
TEST VOLTAGE (V)	24	η down (%)	99.4	CIBSE SHR MAX	1.35	



C Range: 0 - 360DEG
 C Interval: 22.5DEG
 Test Speed: HIGH
 Temperature: 25.3DEG
 Operators:
 Test Date: 2023-04-25

γ Range: 0 - 180DEG
 γ Interval: 2.0DEG
 Test System: EVERFINE GO-2000B_V1 SYSTEM V2.00.450
 Humidity: 65.0%
 Test Distance: 6.040m [K=1.0000]
 Remarks:

ZONAL FLUX DIAGRAM

ZONAL FLUX DIAGRAM:

γ	C0	C45	C90	C135	C180	C225	C270	C315	γ	Φ zone	Φ total	%lum,lamp
10	191.5	191.6	192.0	192.1	192.1	192.2	191.8	191.6	0- 10	18.47	18.47	3.23,3.23
20	181.6	181.7	182.2	182.7	182.6	182.6	181.7	181.5	10- 20	53.01	71.48	12.5,12.5
30	165.6	165.6	166.1	167.1	167.1	166.8	165.4	165.3	20- 30	80.59	152.1	26.6,26.6
40	144.4	144.2	144.7	146.0	146.1	145.5	143.8	143.7	30- 40	97.67	249.7	43.6,43.6
50	118.5	118.0	118.7	120.2	123.2	119.6	117.6	117.4	40- 50	102.2	351.9	61.5,61.5
60	87.79	87.96	88.92	90.44	88.59	89.83	87.68	87.27	50- 60	93.42	445.4	77.8,77.8
70	47.94	55.35	57.00	58.03	47.84	57.15	55.49	54.43	60- 70	71.53	516.9	90.3,90.3
80	10.21	23.43	25.79	25.79	10.65	25.03	24.53	22.67	70- 80	40.64	557.5	97.4,97.4
90	0.0909	2.268	3.674	3.180	0.1065	2.861	3.141	2.082	80- 90	11.49	569.0	99.4,99.4
100	0.1168	0.4906	0.4561	0.4543	0.1481	0.8121	0.3808	0.5089	90-100	1.177	570.2	99.6,99.6
110	0.1869	0.3801	0.1815	0.6199	0.2182	0.6918	0.2026	0.3828	100-110	0.4688	570.7	99.7,99.7
120	0.2726	0.3224	0.2498	0.5752	0.2883	0.4899	0.2710	0.3584	110-120	0.3570	571.0	99.8,99.8
130	0.3453	0.3380	0.3156	0.5224	0.3637	0.4350	0.3447	0.3746	120-130	0.3228	571.4	99.8,99.8
140	0.4180	0.3983	0.3892	0.4912	0.4312	0.4325	0.4157	0.4274	130-140	0.3072	571.7	99.9,99.9
150	0.4752	0.4612	0.4577	0.4775	0.4961	0.4901	0.4841	0.4828	140-150	0.2825	571.9	99.9,99.9
160	0.5271	0.5189	0.5286	0.5222	0.5506	0.5504	0.5498	0.5408	150-160	0.2339	572.2	100,100
170	0.5687	0.5687	0.5813	0.5724	0.5948	0.5949	0.6077	0.5909	160-170	0.1585	572.3	100,100
180	0.5973	0.6001	0.6155	0.6014	0.6025	0.6028	0.6155	0.6067	170-180	0.0567	572.4	100,100
DEG	LUMINOUS INTENSITY:cd									UNIT:lm		

Conical surface Flux(90deg): 311.35 lm

%lum = 54.4%

%lamp = 54.4%

Conical surface Flux(120deg): 445.37 lm

%lum = 77.8%

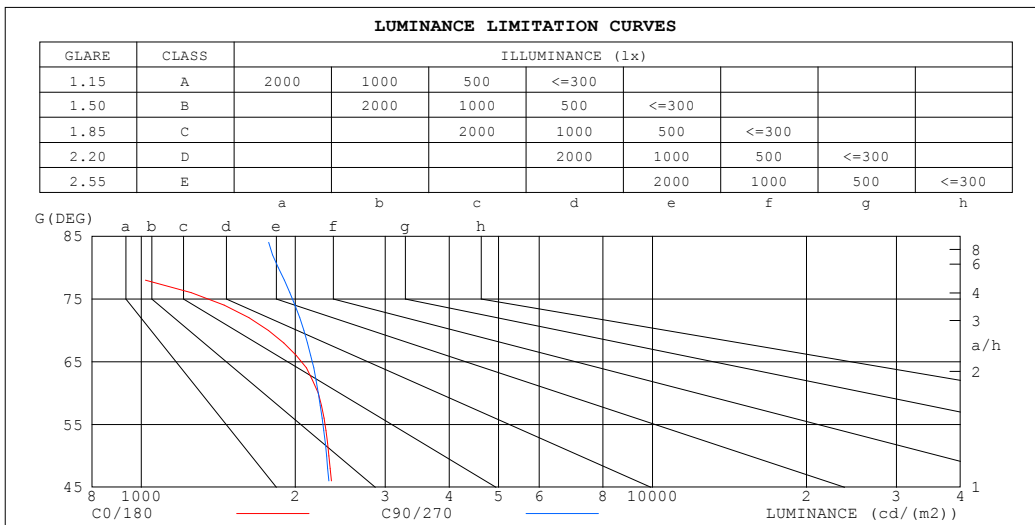
%lamp = 77.8%

C Range: 0 - 360DEG
 C Interval: 22.5DEG
 Test Speed: HIGH
 Temperature:25.3DEG
 Operators:
 Test Date:2023-04-25

γ Range: 0 - 180DEG
 γ Interval: 2.0DEG
 Test System:EVERFINE GO-2000B_V1 SYSTEM V2.00.450
 Humidity:65.0%
 Test Distance:6.040m [K=1.0000]
 Remarks:

LUMINANCE LIMITATION CURVES

NAME: Blackline 1414 profile 1m + BL15.3K	TYPE:	WEIGHT:
SPEC.:	DIM.:	SERIAL No.:
MFR.: Lightrail	SUR.: 0.08*1	Shielding Angle:



LUMINANCE cd/(m2)		
G (DEG)	C0/180	C90/270
85	54	2127
80	743	1853
75	1547	2128
70	1771	2079
65	2182	2255
60	2218	2218
55	2355	2331
50	2329	2303
45	2403	2377

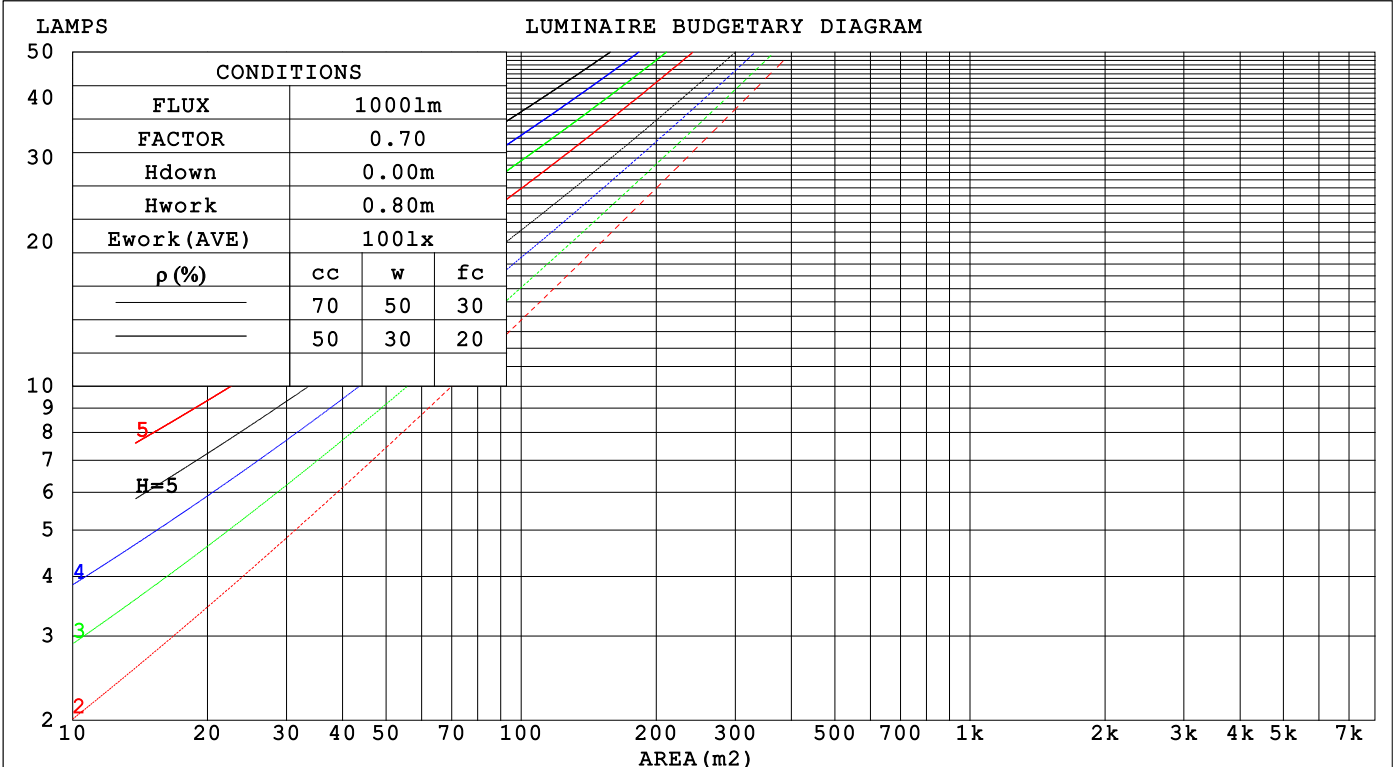
C Range: 0 - 360DEG
 C Interval: 22.5DEG
 Test Speed: HIGH
 Temperature: 25.3DEG
 Operators:
 Test Date: 2023-04-25

γ Range: 0 - 180DEG
 γ Interval: 2.0DEG
 Test System: EVERFINE GO-2000B_V1 SYSTEM V2.00.450
 Humidity: 65.0%
 Test Distance: 6.040m [K=1.0000]
 Remarks:

CU AND LUMINAIRE BUDGETARY ESTIMATE DIAGRAM

NAME: Blackline 1414 profile 1m + BL15.3K	TYPE:	WEIGHT:
SPEC.:	DIM.:	SERIAL No.:
MFR.:Lightrail	SUR.: 0.08*1	Shielding Angle:

pcc	80%			70%			50%			30%			10%			0
pw	50%	30%	10%	50%	30%	10%	50%	30%	10%	50%	30%	10%	50%	30%	10%	0
pfc	20%			20%			20%			20%			20%			0
RCR	RCR:Room Cavity Ratio						Coefficients of Utilization(CU)									
0.0	1.19	1.19	1.19	1.16	1.16	1.16	1.11	1.11	1.11	1.06	1.06	1.06	1.02	1.02	1.02	.99
1.0	1.04	.99	.95	1.01	.97	.94	.97	.94	.91	.93	.90	.88	.89	.87	.85	.83
2.0	.90	.83	.77	.88	.82	.76	.84	.79	.74	.81	.77	.73	.78	.74	.71	.69
3.0	.79	.71	.64	.77	.70	.63	.74	.68	.62	.71	.66	.61	.69	.64	.60	.58
4.0	.70	.61	.54	.68	.60	.54	.66	.59	.53	.63	.57	.52	.61	.56	.51	.49
5.0	.62	.53	.46	.61	.53	.46	.59	.51	.46	.57	.50	.45	.55	.49	.45	.42
6.0	.56	.47	.40	.55	.46	.40	.53	.46	.40	.51	.45	.39	.50	.44	.39	.37
7.0	.51	.42	.36	.50	.42	.36	.48	.41	.35	.47	.40	.35	.45	.39	.35	.33
8.0	.46	.38	.32	.46	.37	.32	.44	.37	.31	.43	.36	.31	.42	.36	.31	.29
9.0	.42	.34	.29	.42	.34	.28	.41	.33	.28	.39	.33	.28	.38	.32	.28	.26
10.0	.39	.31	.26	.39	.31	.26	.38	.30	.26	.37	.30	.25	.36	.30	.25	.24



C Range: 0 - 360DEG
 C Interval: 22.5DEG
 Test Speed: HIGH
 Temperature:25.3DEG
 Operators:
 Test Date:2023-04-25

γ Range: 0 - 180DEG
 γ Interval: 2.0DEG
 Test System:EVERFINE GO-2000B_V1 SYSTEM V2.00.450
 Humidity:65.0%
 Test Distance:6.040m [K=1.0000]
 Remarks:

WEC AND CCEC

NAME: Blackline 1414 profile 1m + BL15.3K	TYPE:	WEIGHT:
SPEC.:	DIM.:	SERIAL No.:
MFR.:Lightrail	SUR.: 0.08*1	Shielding Angle:

ρ _{CC}	80%			70%			50%			30%			10%			0
ρ _w	50%	30%	10%	50%	30%	10%	50%	30%	10%	50%	30%	10%	50%	30%	10%	0
ρ _{fc}	20%			20%			20%			20%			20%			0
RCR	RCR:Room Cavity Ratio						Wall Exitance Coefficients (WEC)									
0.0																
1.0	.313	.178	.056	.305	.174	.055	.292	.167	.053	.279	.161	.052	.268	.155	.050	
2.0	.294	.161	.049	.287	.158	.049	.275	.153	.048	.264	.148	.046	.254	.144	.045	
3.0	.272	.145	.043	.266	.142	.043	.255	.138	.042	.246	.135	.041	.236	.131	.040	
4.0	.251	.130	.038	.246	.129	.038	.236	.125	.037	.227	.122	.037	.219	.119	.036	
5.0	.232	.118	.034	.227	.117	.034	.219	.114	.034	.211	.111	.033	.203	.109	.033	
6.0	.215	.108	.031	.211	.106	.031	.203	.104	.030	.196	.102	.030	.190	.100	.030	
7.0	.200	.099	.028	.196	.098	.028	.189	.096	.028	.183	.094	.027	.177	.092	.027	
8.0	.186	.091	.026	.183	.090	.025	.177	.089	.025	.172	.087	.025	.166	.085	.025	
9.0	.175	.084	.024	.172	.084	.023	.166	.082	.023	.161	.081	.023	.156	.079	.023	
10.0	.164	.079	.022	.162	.078	.022	.157	.077	.022	.152	.075	.021	.148	.074	.021	

ρ _{CC}	80%			70%			50%			30%			10%			0
ρ _w	50%	30%	10%	50%	30%	10%	50%	30%	10%	50%	30%	10%	50%	30%	10%	0
ρ _{fc}	20%			20%			20%			20%			20%			0
RCR	RCR:Room Cavity Ratio						Ceiling Cavity Exitance Coefficients (CCEC)									
0.0	.195	.195	.195	.167	.167	.167	.114	.114	.114	.065	.065	.065	.021	.021	.021	
1.0	.185	.161	.139	.158	.138	.119	.108	.095	.083	.062	.055	.048	.020	.018	.016	
2.0	.177	.136	.102	.152	.117	.088	.104	.081	.062	.060	.047	.036	.019	.015	.012	
3.0	.169	.119	.079	.145	.103	.068	.100	.071	.048	.058	.042	.028	.019	.014	.009	
4.0	.162	.106	.063	.139	.091	.054	.095	.064	.038	.055	.037	.023	.018	.012	.007	
5.0	.154	.095	.052	.133	.082	.045	.091	.058	.032	.053	.034	.019	.017	.011	.006	
6.0	.147	.087	.044	.127	.075	.038	.087	.053	.027	.051	.031	.016	.016	.010	.005	
7.0	.140	.080	.038	.121	.069	.033	.083	.049	.023	.048	.029	.014	.016	.009	.005	
8.0	.134	.074	.033	.115	.064	.029	.080	.045	.021	.046	.027	.012	.015	.009	.004	
9.0	.128	.069	.030	.110	.060	.026	.076	.042	.018	.044	.025	.011	.014	.008	.004	
10.0	.122	.065	.027	.105	.056	.024	.073	.040	.017	.043	.023	.010	.014	.008	.003	

C Range: 0 - 360DEG
 C Interval: 22.5DEG
 Test Speed: HIGH
 Temperature:25.3DEG
 Operators:
 Test Date:2023-04-25

γ Range: 0 - 180DEG
 γ Interval: 2.0DEG
 Test System:EVERFINE GO-2000B_V1 SYSTEM V2.00.450
 Humidity:65.0%
 Test Distance:6.040m [K=1.0000]
 Remarks:

UGR(Unified Glare Rating) Table

NAME: Blackline 1414 profile 1m + BL15.3K		TYPE:					WEIGHT:					
SPEC.:		DIM.:					SERIAL No.:					
MFR.:Lightrail		SUR.: 0.08*1					Shielding Angle:					
ceiling/cavity		0.7	0.7	0.5	0.5	0.3	0.7	0.7	0.5	0.5	0.3	
walls		0.5	0.3	0.5	0.3	0.3	0.5	0.3	0.5	0.3	0.3	
working plane		0.2	0.2	0.2	0.2	0.2	0.2	0.2	0.2	0.2	0.2	
Room dimensions		Viewed crosswise					Viewed endwise					
x = 2H y = 2H		17.7	19.2	18.0	19.4	19.6	17.7	19.2	17.9	19.4	19.6	
	3H	19.1	20.5	19.4	20.8	21.0	19.2	20.7	19.6	20.9	21.2	
	4H	19.5	20.9	19.9	21.1	21.4	19.9	21.2	20.2	21.5	21.8	
	6H	19.7	21.0	20.0	21.2	21.5	20.4	21.7	20.7	21.9	22.2	
	8H	19.7	20.9	20.0	21.2	21.5	20.6	21.8	20.9	22.1	22.4	
	12H	19.6	20.8	20.0	21.1	21.4	20.7	21.9	21.0	22.2	22.5	
	4H	2H	18.3	19.6	18.6	19.9	20.2	18.3	19.6	18.6	19.9	20.2
		3H	19.9	21.1	20.3	21.4	21.7	20.0	21.2	20.4	21.5	21.8
		4H	20.5	21.6	20.9	21.9	22.3	20.8	21.9	21.2	22.2	22.6
		6H	20.8	21.8	21.3	22.2	22.5	21.5	22.4	21.9	22.8	23.1
		8H	20.9	21.8	21.3	22.1	22.5	21.7	22.6	22.1	22.9	23.3
		12H	20.8	21.7	21.3	22.1	22.5	21.8	22.7	22.3	23.1	23.5
	8H	4H	20.8	21.7	21.2	22.1	22.5	21.1	22.0	21.5	22.4	22.8
		6H	21.3	22.1	21.8	22.5	22.9	21.9	22.6	22.3	23.0	23.5
		8H	21.4	22.1	21.9	22.5	23.0	22.2	22.8	22.7	23.3	23.7
		12H	21.5	22.0	22.0	22.5	23.0	22.4	23.0	22.9	23.5	24.0
	12H	4H	20.8	21.7	21.3	22.1	22.5	21.1	21.9	21.5	22.3	22.7
		6H	21.4	22.1	21.9	22.5	23.0	21.9	22.6	22.4	23.0	23.5
		8H	21.6	22.1	22.1	22.6	23.1	22.3	22.8	22.8	23.3	23.8
Variations with the observer position at spacings(CIE Pub.117):												
S = 1.0H		+ 0.2 / - 0.2					+ 0.1 / - 0.2					
1.5H		+ 0.2 / - 0.4					+ 0.2 / - 0.3					
2.0H		+ 0.2 / - 0.4					+ 0.1 / - 0.3					

CIE Pub.117, 572.4 lm Total Lamp Luminous Flux Correct (8log(F/F0) = -1.9)
 Area: 0.08 m2

C Range: 0 - 360DEG
 C Interval: 22.5DEG
 Test Speed: HIGH
 Temperature:25.3DEG
 Operators:
 Test Date:2023-04-25

γ Range: 0 - 180DEG
 γ Interval: 2.0DEG
 Test System:EVERFINE GO-2000B_V1 SYSTEM V2.00.450
 Humidity:65.0%
 Test Distance:6.040m [K=1.0000]
 Remarks:

UTILIZATION FACTORS TABLE

NAME: Blackline 1414 profile 1m + BL15.3K	TYPE:	WEIGHT:
SPEC.:	DIM.:	SERIAL No.:
MFR.:Lightrail	SUR.: 0.08*1	Shielding Angle:

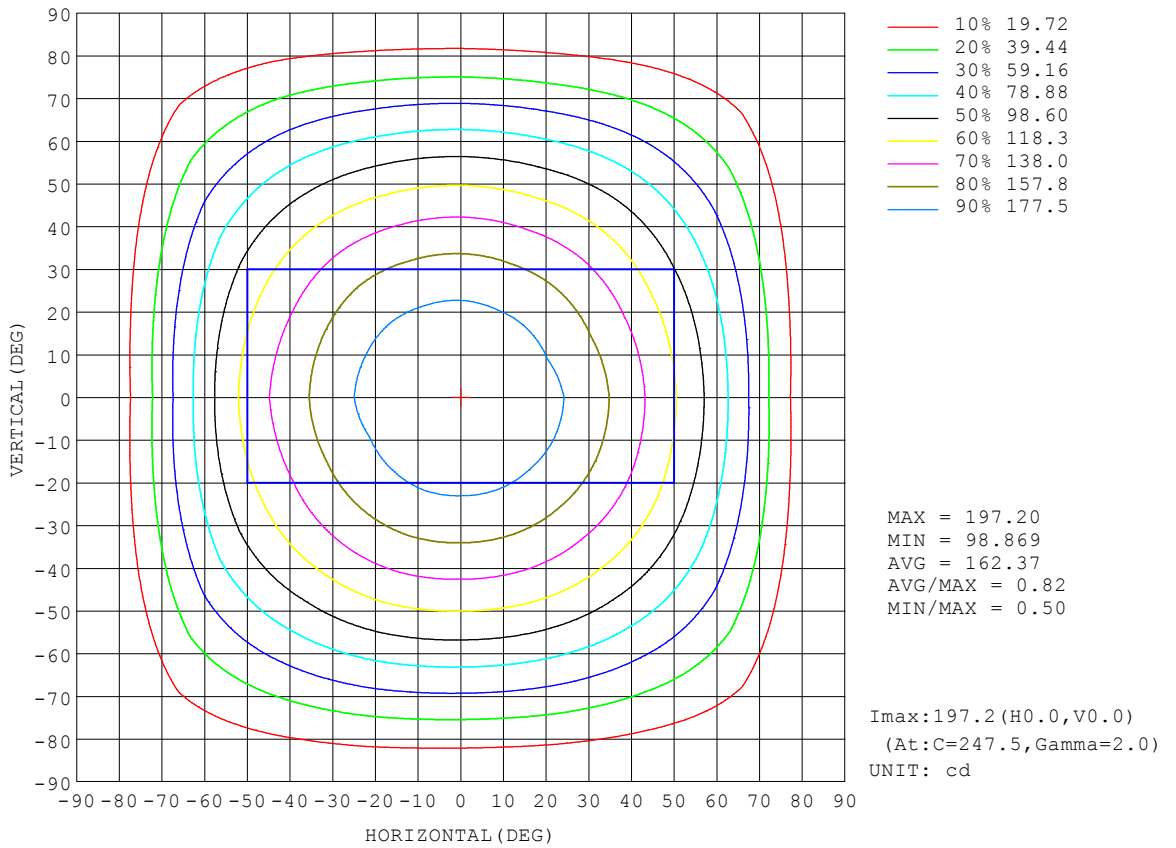
REFLECTANCE										
Ceiling	0.8	0.8	0.8	0.7	0.7	0.7	0.5	0.5	0.5	0
Walls	0.7	0.5	0.3	0.7	0.5	0.3	0.7	0.5	0.3	0
Working plane	0.2	0.2	0.2	0.2	0.2	0.2	0.2	0.2	0.2	0
ROOM INDEX	UTILIZATION FACTORS (PERCENT) $k(RI) \times RCR = 5$									
$k = 0.60$	57	45	38	56	45	38	55	44	38	31
0.80	67	55	48	66	55	48	64	54	47	40
1.00	75	64	57	74	64	56	72	65	56	49
1.25	83	72	65	81	71	64	78	70	63	56
1.50	88	78	70	86	77	70	83	75	69	61
2.00	94	86	79	93	85	78	89	82	77	69
2.50	98	91	84	96	89	83	92	86	82	73
3.00	102	95	89	100	93	88	95	90	86	77
4.00	106	100	95	103	98	94	99	95	91	82
5.00	108	103	99	106	101	98	101	98	95	85
ROOM INDEX	UF(total)									Direct
According to DIN EN 13032-2 2004			Suspended				SHRNOM = 1.25			

C Range: 0 - 360DEG
 C Interval: 22.5DEG
 Test Speed: HIGH
 Temperature:25.3DEG
 Operators:
 Test Date:2023-04-25

γ Range: 0 - 180DEG
 γ Interval: 2.0DEG
 Test System:EVERFINE GO-2000B_V1 SYSTEM V2.00.450
 Humidity:65.0%
 Test Distance:6.040m [K=1.0000]
 Remarks:

ISOCANDELA DIAGRAM

NAME: Blackline 1414 profile 1m + BL15.3K	TYPE:	WEIGHT:
SPEC.:	DIM.:	SERIAL No.:
MFR.:Lightrail	SUR.: 0.08*1	Shielding Angle:

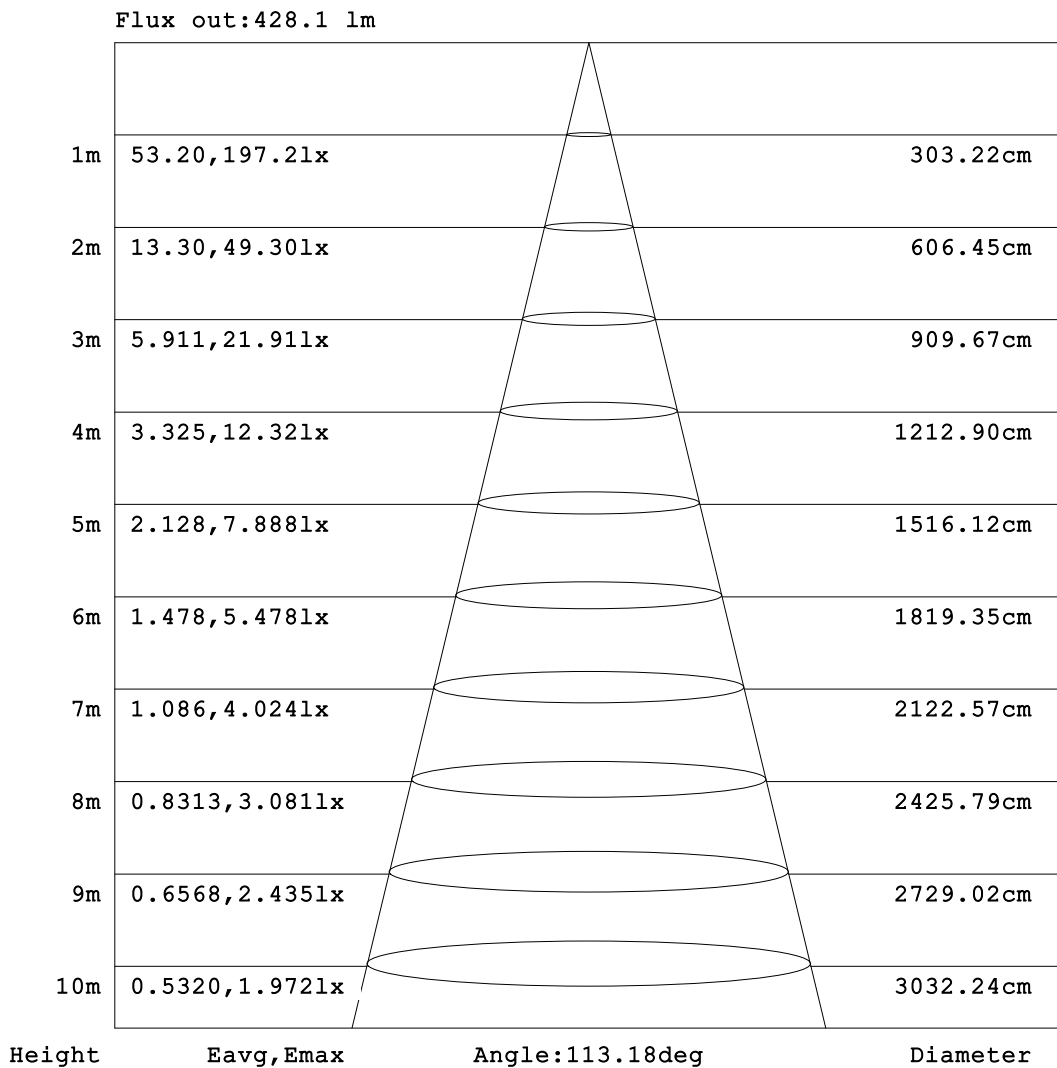


C Range: 0 - 360DEG
 C Interval: 22.5DEG
 Test Speed: HIGH
 Temperature:25.3DEG
 Operators:
 Test Date:2023-04-25

γ Range: 0 - 180DEG
 γ Interval: 2.0DEG
 Test System:EVERFINE GO-2000B_V1 SYSTEM V2.00.450
 Humidity:65.0%
 Test Distance:6.040m [K=1.0000]
 Remarks:

AAI Figure

NAME: Blackline 1414 profile 1m + BL15.3K	TYPE:	WEIGHT:
SPEC.:	DIM.:	SERIAL No.:
MFR.:Lightrail	SUR.: 0.08*1	Shielding Angle:



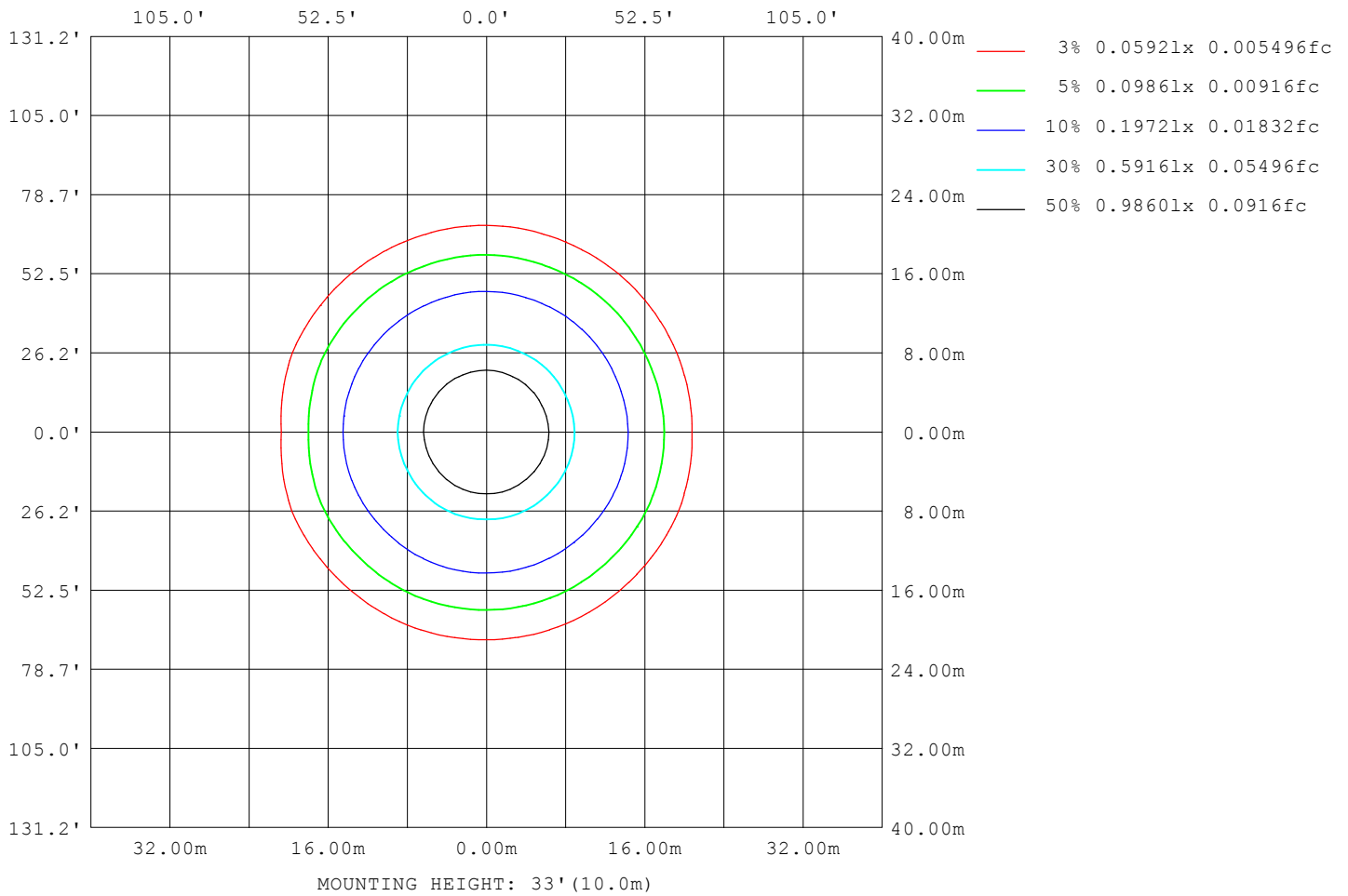
Note:The Curves indicate the illuminated area and the average illumination when the luminaire is at different distance.

C Range: 0 - 360DEG
 C Interval: 22.5DEG
 Test Speed: HIGH
 Temperature:25.3DEG
 Operators:
 Test Date:2023-04-25

γ Range: 0 - 180DEG
 γ Interval: 2.0DEG
 Test System:EVERFINE GO-2000B_V1 SYSTEM V2.00.450
 Humidity:65.0%
 Test Distance:6.040m [K=1.0000]
 Remarks:

ISOLUX DIAGRAM

NAME: Blackline 1414 profile 1m + BL15.3K	TYPE:	WEIGHT:
SPEC.:	DIM.:	SERIAL No.:
MFR.: Lightrail	SUR.: 0.08*1	Shielding Angle:



C Range: 0 - 360DEG
 C Interval: 22.5DEG
 Test Speed: HIGH
 Temperature: 25.3DEG
 Operators:
 Test Date: 2023-04-25

γ Range: 0 - 180DEG
 γ Interval: 2.0DEG
 Test System: EVERFINE GO-2000B_V1 SYSTEM V2.00.450
 Humidity: 65.0%
 Test Distance: 6.040m [K=1.0000]
 Remarks:

LED Avg.L Report

NAME: Blackline 1414 profile 1m + BL15.3K	TYPE:	WEIGHT:
SPEC.:	DIM.:	SERIAL No.:
MFR.:Lightrail	SUR.: 0.08*1	Shielding Angle:

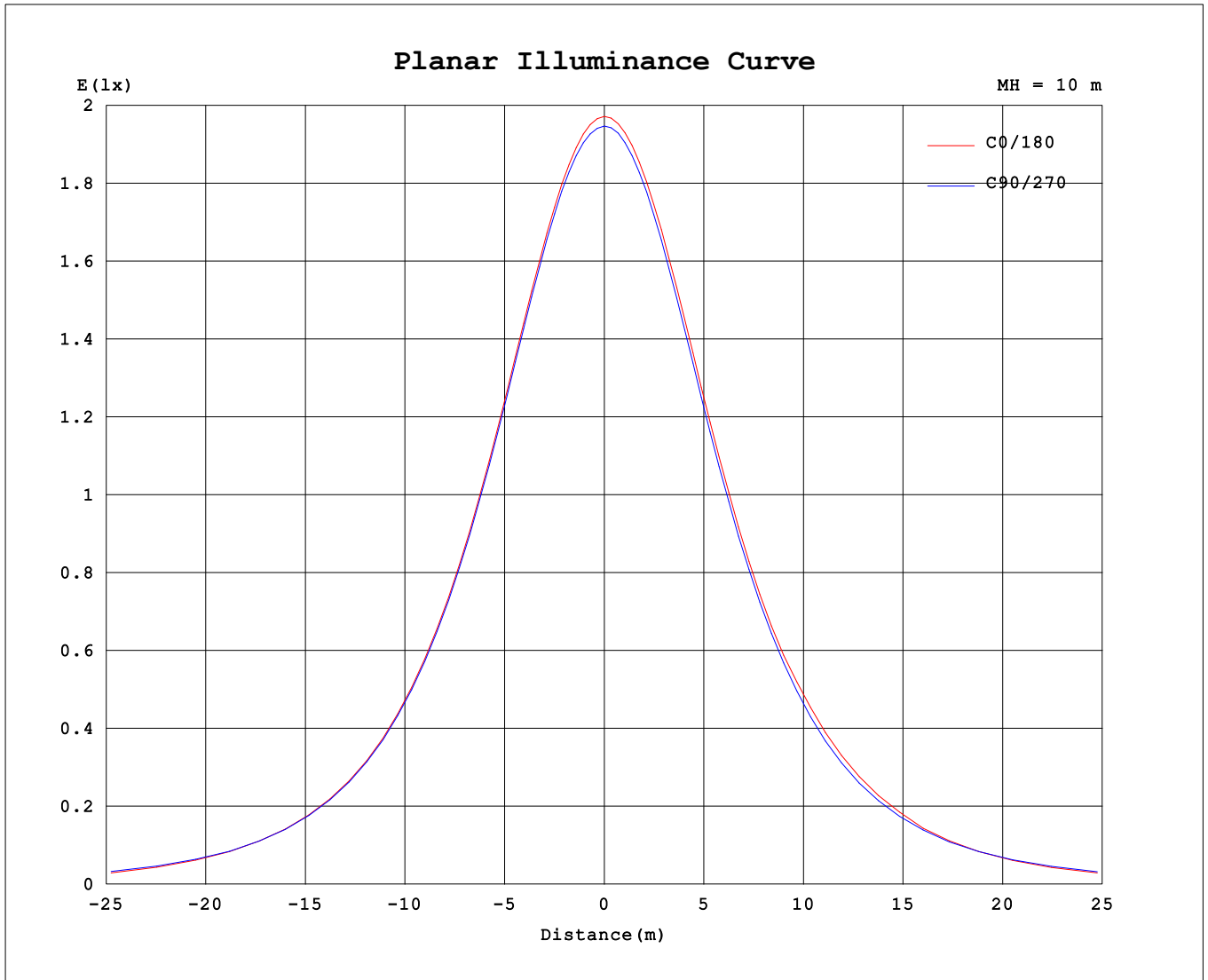
AvgL	cd/m2
L_0~180 (65) av	2029
L_0~180 (75) av	1348
L_0~180 (85) av	20
L_90~270 (65) av	2143
L_90~270 (75) av	1945
L_90~270 (85) av	1694
L_45 (65) av	2154
L_45 (75) av	1921
L_45 (85) av	1540

Standard: GB/T 29293-2012

C Range: 0 - 360DEG
 C Interval: 22.5DEG
 Test Speed: HIGH
 Temperature:25.3DEG
 Operators:
 Test Date:2023-04-25

γ Range: 0 - 180DEG
 γ Interval: 2.0DEG
 Test System:EVERFINE GO-2000B_V1 SYSTEM V2.00.450
 Humidity:65.0%
 Test Distance:6.040m [K=1.0000]
 Remarks:

Planar Illuminance Curve



C Range: 0 - 360DEG
 C Interval: 22.5DEG
 Test Speed: HIGH
 Temperature: 25.3DEG
 Operators:
 Test Date: 2023-04-25

γ Range: 0 - 180DEG
 γ Interval: 2.0DEG
 Test System: EVERFINE GO-2000B_V1 SYSTEM V2.00.450
 Humidity: 65.0%
 Test Distance: 6.040m [K=1.0000]
 Remarks:

LUMINOUS DISTRIBUTION INTENSITY DATA

NAME: Blackline 1414 profile 1m + BL15.3K	TYPE:	WEIGHT:
SPEC.:	DIM.:	SERIAL No.:
MFR.:Lightrail	SUR.: 0.08*1	Shielding Angle:

Table--1

UNIT: cd

C (DEG) \ γ (DEG)	0	22.5	45	67.5	90	112.5	135	157.5	180	202.5	225	247.5	270	292.5	315	337.5			
0	195	195	195	195	195	195	195	195	195	195	195	195	195	195	195	195			
5	194	194	194	195	195	195	195	195	195	195	195	195	195	195	195	195			
10	192	192	192	192	192	192	192	192	192	192	192	192	192	192	192	192			
15	188	189	188	189	189	189	189	189	189	189	189	189	189	188	188	188			
20	182	182	182	182	182	183	183	183	183	183	183	182	182	181	181	181			
25	176	176	176	176	176	177	177	177	177	177	177	176	176	175	176	176			
30	166	166	166	166	166	167	167	167	167	167	167	166	165	165	165	165			
35	158	158	158	158	158	159	159	160	159	159	159	158	157	157	157	157			
40	144	145	144	145	145	146	146	147	146	146	146	144	144	143	144	144			
45	135	135	134	135	135	136	136	137	138	136	136	134	134	133	134	134			
50	118	119	118	119	119	120	120	122	123	121	120	118	118	117	117	118			
55	107	107	106	107	107	109	109	111	111	110	108	106	106	105	106	106			
60	87.8	88.8	88.0	88.8	88.9	90.3	90.4	93.2	88.6	91.6	89.8	88.0	87.7	86.6	87.3	87.4			
65	73.0	75.7	75.2	76.1	76.4	77.6	77.8	79.8	72.5	78.3	77.0	75.4	75.0	74.0	74.4	74.5			
70	47.9	55.5	55.4	56.5	57.0	58.1	58.0	59.0	47.8	57.6	57.1	55.9	55.5	54.4	54.4	54.2			
75	31.7	42.1	42.2	43.6	44.2	45.1	44.8	44.9	31.9	43.5	43.9	42.9	42.7	41.5	41.3	40.7			
80	10.2	22.9	23.4	25.2	25.8	26.6	25.8	24.8	10.6	23.7	25.0	24.6	24.5	23.3	22.7	21.6			
85	0.37	11.9	12.5	14.2	14.9	15.5	14.6	13.4	0.72	12.4	13.8	13.6	13.6	12.5	11.8	10.8			
90	0.09	1.94	2.27	3.25	3.67	3.84	3.18	2.24	0.11	2.01	2.86	3.03	3.14	2.58	2.08	1.62			
95	0.09	1.28	0.94	1.11	1.25	1.37	1.16	1.10	0.12	1.30	1.32	1.18	1.12	0.99	0.92	1.20			
100	0.12	0.91	0.49	0.40	0.46	0.58	0.45	0.73	0.15	1.14	0.81	0.54	0.38	0.39	0.51	0.92			
105	0.14	0.69	0.43	0.23	0.23	0.37	0.51	0.64	0.18	1.03	0.73	0.39	0.20	0.25	0.44	0.71			
110	0.19	0.39	0.38	0.24	0.18	0.37	0.62	0.53	0.22	0.57	0.69	0.37	0.20	0.25	0.38	0.43			
115	0.22	0.37	0.35	0.26	0.20	0.38	0.60	0.48	0.25	0.43	0.66	0.37	0.23	0.25	0.37	0.35			
120	0.27	0.34	0.32	0.29	0.25	0.40	0.58	0.41	0.29	0.34	0.49	0.38	0.27	0.27	0.36	0.33			
125	0.30	0.34	0.33	0.32	0.28	0.41	0.55	0.41	0.32	0.33	0.45	0.38	0.30	0.30	0.36	0.34			
130	0.35	0.37	0.34	0.35	0.32	0.43	0.52	0.41	0.36	0.33	0.44	0.38	0.34	0.33	0.37	0.34			
135	0.37	0.39	0.36	0.38	0.35	0.45	0.50	0.41	0.39	0.36	0.43	0.39	0.37	0.36	0.40	0.36			
140	0.42	0.44	0.40	0.42	0.39	0.47	0.49	0.43	0.43	0.40	0.43	0.42	0.42	0.39	0.43	0.40			
145	0.44	0.46	0.42	0.44	0.42	0.48	0.49	0.45	0.46	0.42	0.46	0.43	0.44	0.42	0.45	0.43			
150	0.48	0.50	0.46	0.48	0.46	0.51	0.48	0.50	0.50	0.47	0.49	0.47	0.48	0.45	0.48	0.47			
155	0.50	0.52	0.48	0.51	0.49	0.52	0.49	0.52	0.52	0.48	0.51	0.49	0.51	0.48	0.51	0.49			
160	0.53	0.55	0.52	0.54	0.53	0.56	0.52	0.55	0.55	0.52	0.55	0.53	0.55	0.51	0.54	0.52			
165	0.54	0.58	0.55	0.57	0.55	0.58	0.54	0.57	0.57	0.54	0.56	0.55	0.58	0.54	0.56	0.54			
170	0.57	0.60	0.57	0.60	0.58	0.60	0.57	0.59	0.59	0.56	0.59	0.57	0.61	0.57	0.59	0.57			
175	0.59	0.60	0.58	0.61	0.60	0.62	0.59	0.60	0.60	0.58	0.60	0.59	0.62	0.58	0.61	0.58			
180	0.60	0.60	0.60	0.61	0.62	0.62	0.60	0.60	0.60	0.60	0.60	0.60	0.62	0.61	0.61	0.60			

C Range: 0 - 360DEG
 C Interval: 22.5DEG
 Test Speed: HIGH
 Temperature:25.3DEG
 Operators:
 Test Date:2023-04-25

γ Range: 0 - 180DEG
 γ Interval: 2.0DEG
 Test System:EVERFINE GO-2000B_V1 SYSTEM V2.00.450
 Humidity:65.0%
 Test Distance:6.040m [K=1.0000]
 Remarks: