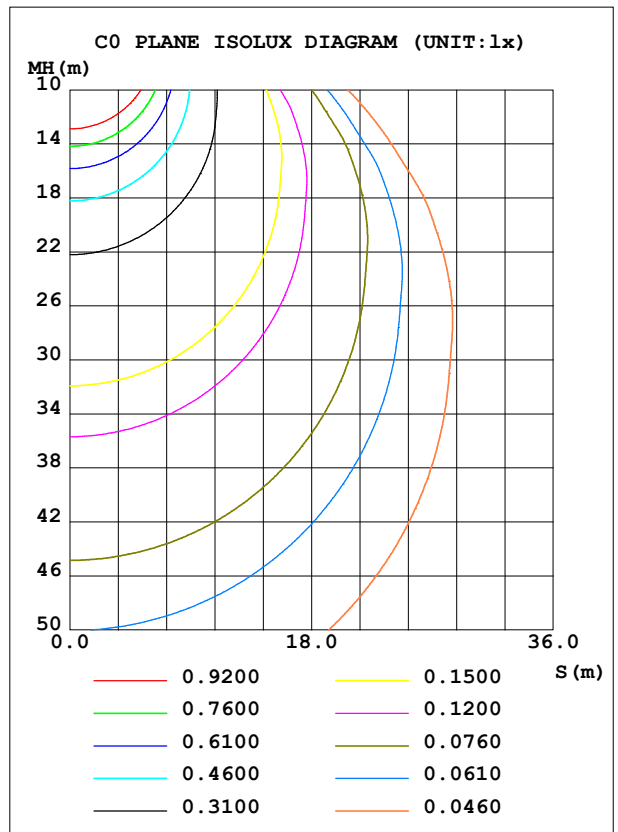
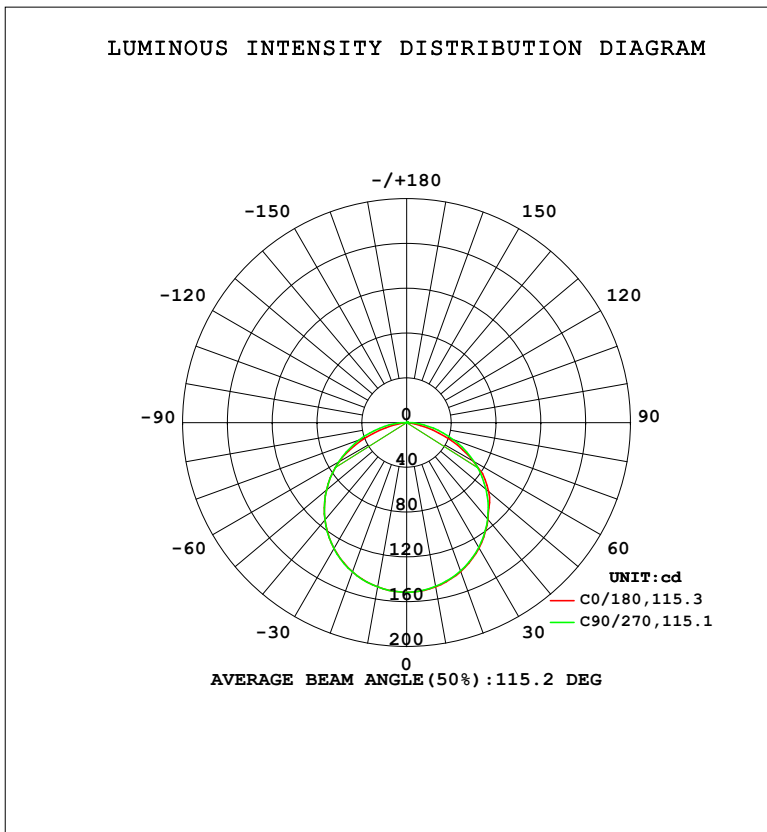


LUMINAIRE PHOTOMETRIC TEST REPORT

NAME: Blackline 1414 profile 1m + BL11.4K	TYPE:	WEIGHT:
SPEC.:	DIM.:	SERIAL No.:
MFR.:Lightrail	SUR.: 0.08*1	Shielding Angle:

DATA OF LAMP		PHOTOMETRIC DATA				Eff: 38.37 lm/W
MODEL	4000K	I _{max} (cd)	151.5	S/MH (C0/180)	1.27	
NOMINAL POWER (W)	11	LOR (%)	100.0	S/MH (C90/270)	1.27	
RATED VOLTAGE (V)	24	TOTAL FLUX (lm)	448.61	η UP, DN (C0-180)	0.3, 49.6	
NOMINAL FLUX (lm)	448.602	CIE CLASS	DIRECT	η UP, DN (C180-360)	0.3, 49.8	
LAMPS INSIDE	1	η up (%)	0.6	CIBSE SHR NOM	1.25	
TEST VOLTAGE (V)	24	η down (%)	99.4	CIBSE SHR MAX	1.35	



C Range: 0 - 360DEG
 C Interval: 22.5DEG
 Test Speed: HIGH
 Temperature: 25.3DEG
 Operators:
 Test Date: 2023-04-25

γ Range: 0 - 180DEG
 γ Interval: 2.0DEG
 Test System: EVERFINE GO-2000B_V1 SYSTEM V2.00.450
 Humidity: 65.0%
 Test Distance: 6.040m [K=1.0000]
 Remarks:

ZONAL FLUX DIAGRAM

ZONAL FLUX DIAGRAM:

γ	C0	C45	C90	C135	C180	C225	C270	C315	γ	Φ zone	Φ total	%lum,lamp
10	148.9	148.5	148.5	148.8	149.1	149.3	149.1	148.9	0- 10	14.34	14.34	3.2,3.2
20	141.5	140.8	140.9	141.2	141.7	142.1	141.9	141.7	10- 20	41.15	55.49	12.4,12.4
30	129.3	128.7	128.9	129.3	129.8	130.2	129.9	129.8	20- 30	62.70	118.2	26.3,26.3
40	113.0	112.4	112.5	113.2	113.5	114.0	113.5	113.4	30- 40	76.22	194.4	43.3,43.3
50	95.85	92.34	92.51	93.28	93.52	93.94	93.44	93.23	40- 50	79.98	274.4	61.2,61.2
60	68.64	69.11	69.48	70.12	69.88	70.57	70.15	69.88	50- 60	73.43	347.8	77.5,77.5
70	36.92	43.56	44.34	44.64	38.21	44.78	44.82	44.26	60- 70	56.39	404.2	90.1,90.1
80	7.744	18.64	20.00	19.52	8.441	19.42	20.42	19.28	70- 80	32.14	436.4	97.3,97.3
90	0.0651	2.989	3.826	2.595	0.0833	2.034	3.257	2.696	80- 90	9.490	445.9	99.4,99.4
100	0.0754	0.8713	0.3145	0.2479	0.1172	0.2335	0.1157	0.8348	90-100	1.048	446.9	99.6,99.6
110	0.1379	0.6403	0.1594	0.1998	0.1718	0.2440	0.1631	0.6372	100-110	0.3871	447.3	99.7,99.7
120	0.1977	0.3912	0.1919	0.2107	0.2265	0.2597	0.2157	0.4422	110-120	0.2831	447.6	99.8,99.8
130	0.2550	0.2750	0.2497	0.2554	0.2786	0.2938	0.2709	0.3497	120-130	0.2445	447.8	99.8,99.8
140	0.3097	0.2989	0.2997	0.3107	0.3358	0.3358	0.3235	0.3480	130-140	0.2333	448.0	99.9,99.9
150	0.3565	0.3515	0.3549	0.3556	0.3904	0.3830	0.3787	0.3767	140-150	0.2161	448.3	99.9,99.9
160	0.4007	0.3934	0.4049	0.4029	0.4294	0.4276	0.4286	0.4189	150-160	0.1799	448.4	100,100
170	0.4320	0.4328	0.4443	0.4372	0.4632	0.4591	0.4706	0.4583	160-170	0.1218	448.6	100,100
180	0.4554	0.4617	0.4706	0.4583	0.4632	0.4617	0.4706	0.4662	170-180	0.0434	448.6	100,100
DEG	LUMINOUS INTENSITY:cd									UNIT:lm		

Conical surface Flux(90deg): 242.59 lm

%lum = 54.1%

%lamp = 54.1%

Conical surface Flux(120deg): 347.82 lm

%lum = 77.5%

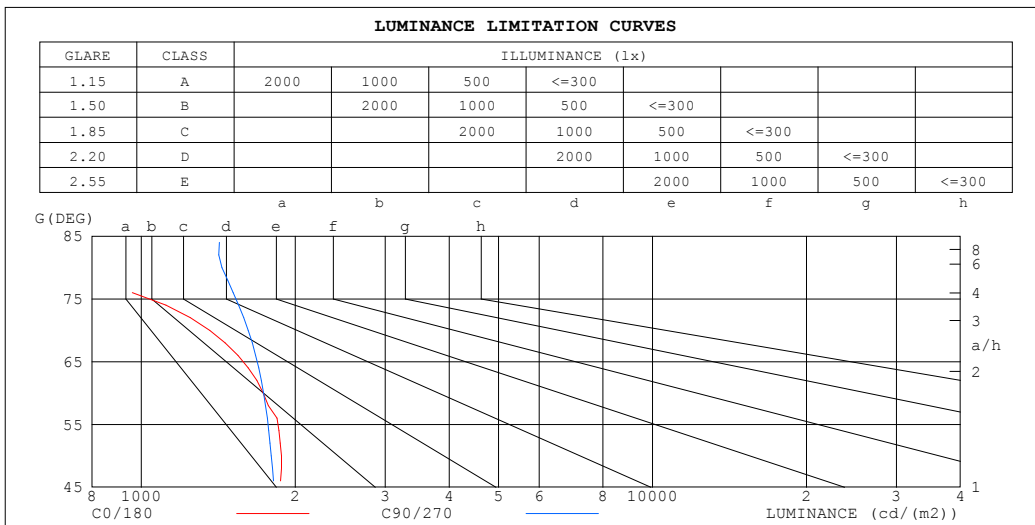
%lamp = 77.5%

C Range: 0 - 360DEG
 C Interval: 22.5DEG
 Test Speed: HIGH
 Temperature:25.3DEG
 Operators:
 Test Date:2023-04-25

γ Range: 0 - 180DEG
 γ Interval: 2.0DEG
 Test System:EVERFINE GO-2000B_V1 SYSTEM V2.00.450
 Humidity:65.0%
 Test Distance:6.040m [K=1.0000]
 Remarks:

LUMINANCE LIMITATION CURVES

NAME: Blackline 1414 profile 1m + BL11.4K	TYPE:	WEIGHT:
SPEC.:	DIM.:	SERIAL No.:
MFR.: Lightrail	SUR.: 0.08*1	Shielding Angle:



LUMINANCE cd/(m2)		
G (DEG)	C0/180	C90/270
85	29	1705
80	562	1437
75	1189	1650
70	1361	1618
65	1678	1760
60	1731	1734
55	1903	1819
50	1880	1796
45	1887	1852

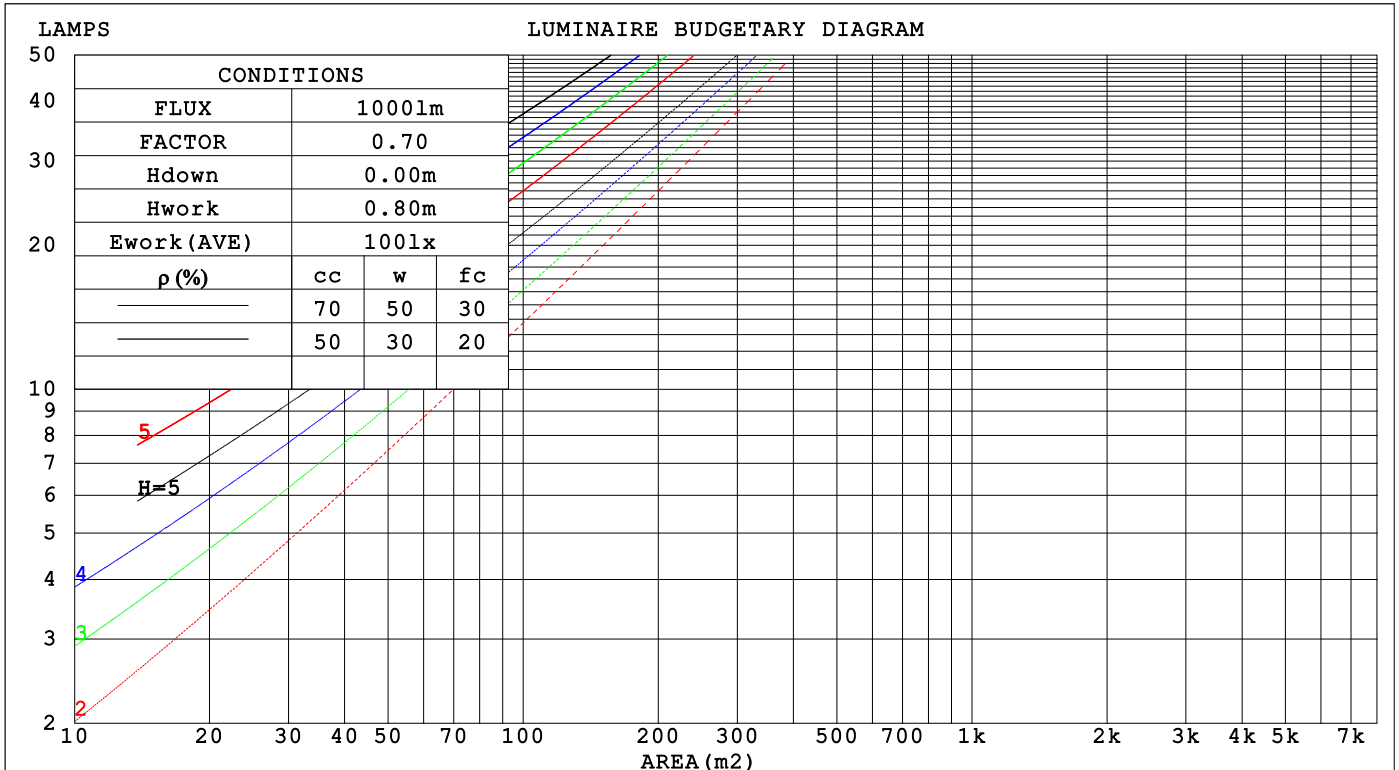
C Range: 0 - 360DEG
 C Interval: 22.5DEG
 Test Speed: HIGH
 Temperature: 25.3DEG
 Operators:
 Test Date: 2023-04-25

γ Range: 0 - 180DEG
 γ Interval: 2.0DEG
 Test System: EVERFINE GO-2000B_V1 SYSTEM V2.00.450
 Humidity: 65.0%
 Test Distance: 6.040m [K=1.0000]
 Remarks:

CU AND LUMINAIRE BUDGETARY ESTIMATE DIAGRAM

NAME: Blackline 1414 profile 1m + BL11.4K	TYPE:	WEIGHT:
SPEC.:	DIM.:	SERIAL No.:
MFR.:Lightrail	SUR.: 0.08*1	Shielding Angle:

pcc	80%			70%			50%			30%			10%			0
pw	50%	30%	10%	50%	30%	10%	50%	30%	10%	50%	30%	10%	50%	30%	10%	0
pfc	20%			20%			20%			20%			20%			0
RCR	RCR:Room Cavity Ratio						Coefficients of Utilization(CU)									
0.0	1.19	1.19	1.19	1.16	1.16	1.16	1.11	1.11	1.11	1.06	1.06	1.06	1.01	1.01	1.01	.99
1.0	1.03	.99	.95	1.01	.97	.94	.97	.93	.90	.93	.90	.88	.89	.87	.85	.83
2.0	.90	.83	.77	.88	.82	.76	.84	.79	.74	.81	.76	.72	.78	.74	.71	.69
3.0	.79	.70	.64	.77	.69	.63	.74	.67	.62	.71	.66	.61	.69	.64	.60	.57
4.0	.70	.61	.54	.68	.60	.54	.66	.58	.53	.63	.57	.52	.61	.56	.51	.49
5.0	.62	.53	.46	.61	.52	.46	.59	.51	.45	.57	.50	.45	.55	.49	.44	.42
6.0	.56	.47	.40	.55	.46	.40	.53	.45	.40	.51	.44	.39	.50	.44	.39	.37
7.0	.51	.42	.36	.50	.41	.35	.48	.41	.35	.47	.40	.35	.45	.39	.34	.32
8.0	.46	.38	.32	.45	.37	.31	.44	.37	.31	.43	.36	.31	.41	.35	.31	.29
9.0	.42	.34	.28	.42	.34	.28	.40	.33	.28	.39	.33	.28	.38	.32	.28	.26
10.0	.39	.31	.26	.38	.31	.26	.37	.30	.25	.36	.30	.25	.35	.30	.25	.23



C Range: 0 - 360DEG
 C Interval: 22.5DEG
 Test Speed: HIGH
 Temperature:25.3DEG
 Operators:
 Test Date:2023-04-25

γ Range: 0 - 180DEG
 γ Interval: 2.0DEG
 Test System:EVERFINE GO-2000B_V1 SYSTEM V2.00.450
 Humidity:65.0%
 Test Distance:6.040m [K=1.0000]
 Remarks:

WEC AND CCEC

NAME: Blackline 1414 profile 1m + BL11.4K	TYPE:	WEIGHT:
SPEC.:	DIM.:	SERIAL No.:
MFR.:Lightrail	SUR.: 0.08*1	Shielding Angle:

ρ_{CC}	80%			70%			50%			30%			10%			0
ρ_w	50%	30%	10%	50%	30%	10%	50%	30%	10%	50%	30%	10%	50%	30%	10%	0
ρ_{fc}	20%			20%			20%			20%			20%			0
RCR	RCR:Room Cavity Ratio						Wall Exitance Coefficients(WEC)									
0.0																
1.0	.315	.179	.057	.307	.175	.056	.294	.168	.054	.281	.162	.052	.270	.156	.050	
2.0	.295	.162	.050	.289	.159	.049	.277	.154	.048	.265	.149	.047	.255	.144	.046	
3.0	.273	.145	.043	.267	.143	.043	.256	.139	.042	.246	.135	.041	.237	.131	.041	
4.0	.251	.131	.038	.246	.129	.038	.237	.126	.038	.228	.122	.037	.220	.119	.036	
5.0	.232	.118	.034	.228	.117	.034	.219	.114	.034	.211	.112	.033	.204	.109	.033	
6.0	.215	.108	.031	.211	.107	.031	.204	.104	.030	.197	.102	.030	.190	.100	.030	
7.0	.200	.099	.028	.196	.098	.028	.190	.096	.028	.183	.094	.027	.178	.092	.027	
8.0	.187	.091	.026	.184	.090	.026	.177	.089	.025	.172	.087	.025	.166	.085	.025	
9.0	.175	.085	.024	.172	.084	.024	.167	.082	.023	.161	.081	.023	.157	.080	.023	
10.0	.164	.079	.022	.162	.078	.022	.157	.077	.022	.152	.076	.021	.148	.074	.021	

ρ_{CC}	80%			70%			50%			30%			10%			0
ρ_w	50%	30%	10%	50%	30%	10%	50%	30%	10%	50%	30%	10%	50%	30%	10%	0
ρ_{fc}	20%			20%			20%			20%			20%			0
RCR	RCR:Room Cavity Ratio						Ceiling Cavity Exitance Coefficients(CCEC)									
0.0	.195	.195	.195	.167	.167	.167	.114	.114	.114	.065	.065	.065	.021	.021	.021	
1.0	.185	.161	.139	.159	.138	.119	.108	.095	.083	.062	.055	.048	.020	.018	.016	
2.0	.177	.137	.102	.152	.118	.088	.104	.081	.062	.060	.047	.036	.019	.015	.012	
3.0	.170	.119	.079	.146	.103	.068	.100	.071	.048	.058	.042	.028	.019	.014	.009	
4.0	.162	.106	.063	.139	.091	.055	.096	.064	.038	.055	.037	.023	.018	.012	.007	
5.0	.155	.095	.052	.133	.083	.045	.092	.058	.032	.053	.034	.019	.017	.011	.006	
6.0	.148	.087	.044	.127	.075	.038	.088	.053	.027	.051	.031	.016	.016	.010	.005	
7.0	.141	.080	.038	.121	.070	.033	.084	.049	.023	.049	.029	.014	.016	.009	.005	
8.0	.134	.074	.033	.116	.065	.029	.080	.045	.021	.047	.027	.012	.015	.009	.004	
9.0	.128	.070	.030	.110	.060	.026	.076	.042	.019	.045	.025	.011	.014	.008	.004	
10.0	.122	.065	.027	.106	.057	.024	.073	.040	.017	.043	.024	.010	.014	.008	.003	

C Range: 0 - 360DEG
 C Interval: 22.5DEG
 Test Speed: HIGH
 Temperature:25.3DEG
 Operators:
 Test Date:2023-04-25

γ Range: 0 - 180DEG
 γ Interval: 2.0DEG
 Test System:EVERFINE GO-2000B_V1 SYSTEM V2.00.450
 Humidity:65.0%
 Test Distance:6.040m [K=1.0000]
 Remarks:

UGR(Unified Glare Rating) Table

NAME: Blackline 1414 profile 1m + BL11.4K		TYPE:					WEIGHT:				
SPEC.:		DIM.:					SERIAL No.:				
MFR.:Lightrail		SUR.: 0.08*1					Shielding Angle:				
ceiling/cavity	0.7	0.7	0.5	0.5	0.3	0.7	0.7	0.5	0.5	0.3	
walls	0.5	0.3	0.5	0.3	0.3	0.5	0.3	0.5	0.3	0.3	
working plane	0.2	0.2	0.2	0.2	0.2	0.2	0.2	0.2	0.2	0.2	
Room dimensions	Viewed crosswise					Viewed endwise					
x = 2H y = 2H	17.8	19.3	18.1	19.5	19.8	17.6	19.2	17.9	19.4	19.6	
3H	19.2	20.6	19.5	20.8	21.1	19.2	20.6	19.5	20.9	21.1	
4H	19.6	21.0	19.9	21.2	21.5	19.9	21.2	20.2	21.5	21.7	
6H	19.8	21.0	20.1	21.3	21.6	20.3	21.6	20.7	21.9	22.2	
8H	19.7	21.0	20.1	21.3	21.6	20.5	21.7	20.9	22.0	22.3	
12H	19.7	20.9	20.1	21.2	21.5	20.6	21.8	21.0	22.1	22.4	
4H 2H	18.4	19.7	18.7	20.0	20.3	18.3	19.6	18.6	19.9	20.1	
3H	20.0	21.2	20.4	21.5	21.8	20.0	21.2	20.4	21.5	21.8	
4H	20.6	21.7	21.0	22.0	22.4	20.8	21.9	21.2	22.2	22.6	
6H	20.9	21.9	21.3	22.3	22.6	21.4	22.4	21.8	22.7	23.1	
8H	21.0	21.8	21.4	22.2	22.6	21.6	22.5	22.1	22.9	23.3	
12H	20.9	21.8	21.4	22.1	22.6	21.8	22.6	22.3	23.0	23.5	
8H 4H	20.9	21.8	21.3	22.2	22.6	21.1	22.0	21.5	22.3	22.7	
6H	21.4	22.2	21.9	22.6	23.0	21.8	22.6	22.3	23.0	23.4	
8H	21.5	22.2	22.0	22.6	23.1	22.2	22.8	22.6	23.3	23.7	
12H	21.6	22.1	22.1	22.6	23.1	22.4	23.0	22.9	23.5	24.0	
12H 4H	20.9	21.7	21.4	22.1	22.6	21.1	21.9	21.5	22.3	22.7	
6H	21.5	22.1	22.0	22.6	23.0	21.9	22.6	22.4	23.0	23.5	
8H	21.7	22.2	22.2	22.7	23.2	22.3	22.8	22.7	23.3	23.8	
Variations with the observer position at spacings(CIE Pub.117):											
S = 1.0H	+ 0.2 / - 0.2					+ 0.1 / - 0.2					
1.5H	+ 0.2 / - 0.4					+ 0.2 / - 0.3					
2.0H	+ 0.2 / - 0.5					+ 0.1 / - 0.3					

CIE Pub.117, 448.6 lm Total Lamp Luminous Flux Correct (8log(F/F0) = -2.8)
 Area: 0.08 m2

C Range: 0 - 360DEG
 C Interval: 22.5DEG
 Test Speed: HIGH
 Temperature:25.3DEG
 Operators:
 Test Date:2023-04-25

γ Range: 0 - 180DEG
 γ Interval: 2.0DEG
 Test System:EVERFINE GO-2000B_V1 SYSTEM V2.00.450
 Humidity:65.0%
 Test Distance:6.040m [K=1.0000]
 Remarks:

UTILIZATION FACTORS TABLE

NAME: Blackline 1414 profile 1m + BL11.4K	TYPE:	WEIGHT:
SPEC.:	DIM.:	SERIAL No.:
MFR.:Lightrail	SUR.: 0.08*1	Shielding Angle:

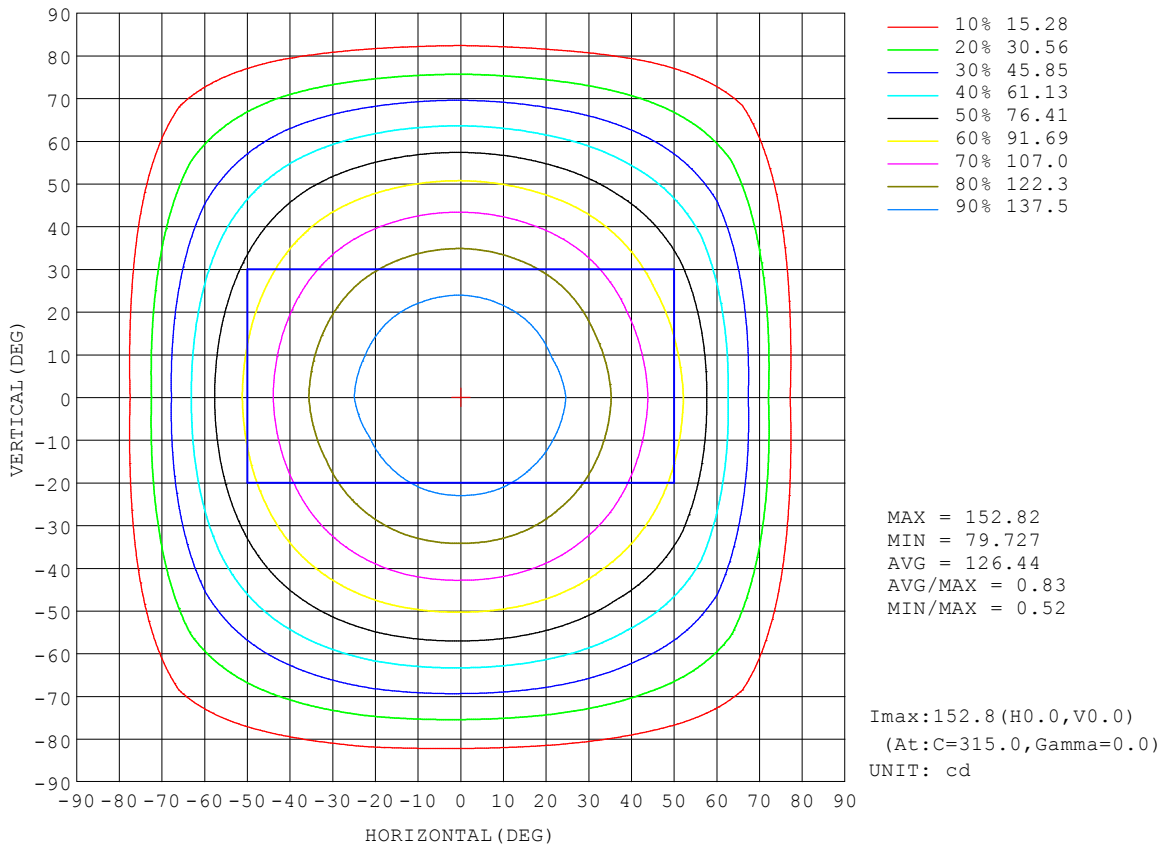
REFLECTANCE										
Ceiling	0.8	0.8	0.8	0.7	0.7	0.7	0.5	0.5	0.5	0
Walls	0.7	0.5	0.3	0.7	0.5	0.3	0.7	0.5	0.3	0
Working plane	0.2	0.2	0.2	0.2	0.2	0.2	0.2	0.2	0.2	0
ROOM INDEX	UTILIZATION FACTORS (PERCENT) $k(RI) \times RCR = 5$									
k = 0.60	57	45	38	56	45	38	55	44	38	31
0.80	67	55	48	66	55	47	64	54	47	40
1.00	75	64	57	74	63	56	72	65	56	48
1.25	82	72	64	81	71	64	78	69	63	56
1.50	87	77	70	86	76	70	83	75	69	61
2.00	94	86	79	92	84	78	89	82	77	69
2.50	98	90	84	96	89	83	92	86	81	73
3.00	102	95	89	100	93	88	95	90	86	77
4.00	106	100	95	103	98	94	99	95	91	82
5.00	108	103	99	106	101	98	101	98	94	85
ROOM INDEX	UF(total)									Direct
According to DIN EN 13032-2 2004			Suspended				SHRNOM = 1.25			

C Range: 0 - 360DEG
 C Interval: 22.5DEG
 Test Speed: HIGH
 Temperature:25.3DEG
 Operators:
 Test Date:2023-04-25

γ Range: 0 - 180DEG
 γ Interval: 2.0DEG
 Test System:EVERFINE GO-2000B_V1 SYSTEM V2.00.450
 Humidity:65.0%
 Test Distance:6.040m [K=1.0000]
 Remarks:

ISOCANDELA DIAGRAM

NAME: Blackline 1414 profile 1m + BL11.4K	TYPE:	WEIGHT:
SPEC.:	DIM.:	SERIAL No.:
MFR.:Lightrail	SUR.: 0.08*1	Shielding Angle:



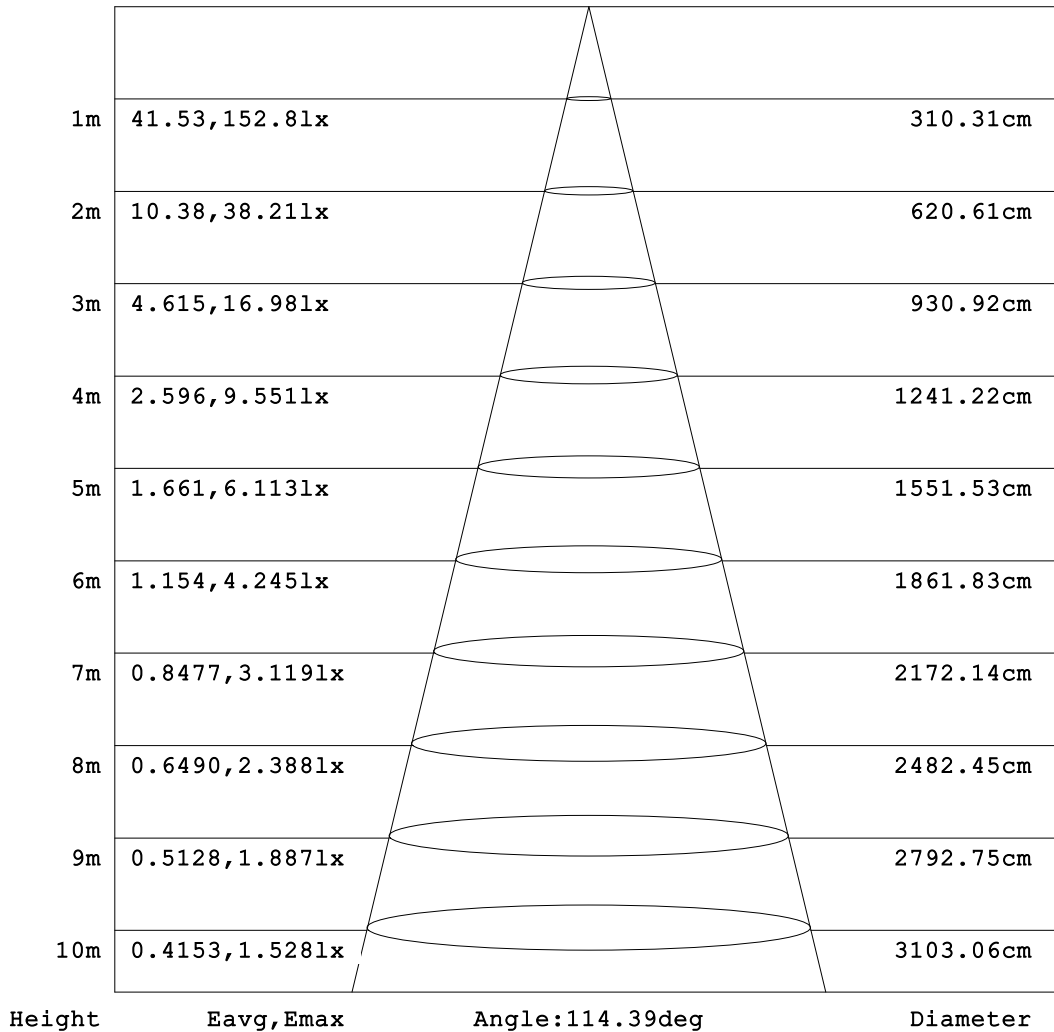
C Range: 0 - 360DEG
 C Interval: 22.5DEG
 Test Speed: HIGH
 Temperature:25.3DEG
 Operators:
 Test Date:2023-04-25

γ Range: 0 - 180DEG
 γ Interval: 2.0DEG
 Test System:EVERFINE GO-2000B_V1 SYSTEM V2.00.450
 Humidity:65.0%
 Test Distance:6.040m [K=1.0000]
 Remarks:

AAI Figure

NAME: Blackline 1414 profile 1m + BL11.4K	TYPE:	WEIGHT:
SPEC.:	DIM.:	SERIAL No.:
MFR.:Lightrail	SUR.: 0.08*1	Shielding Angle:

Flux out:334.2 lm



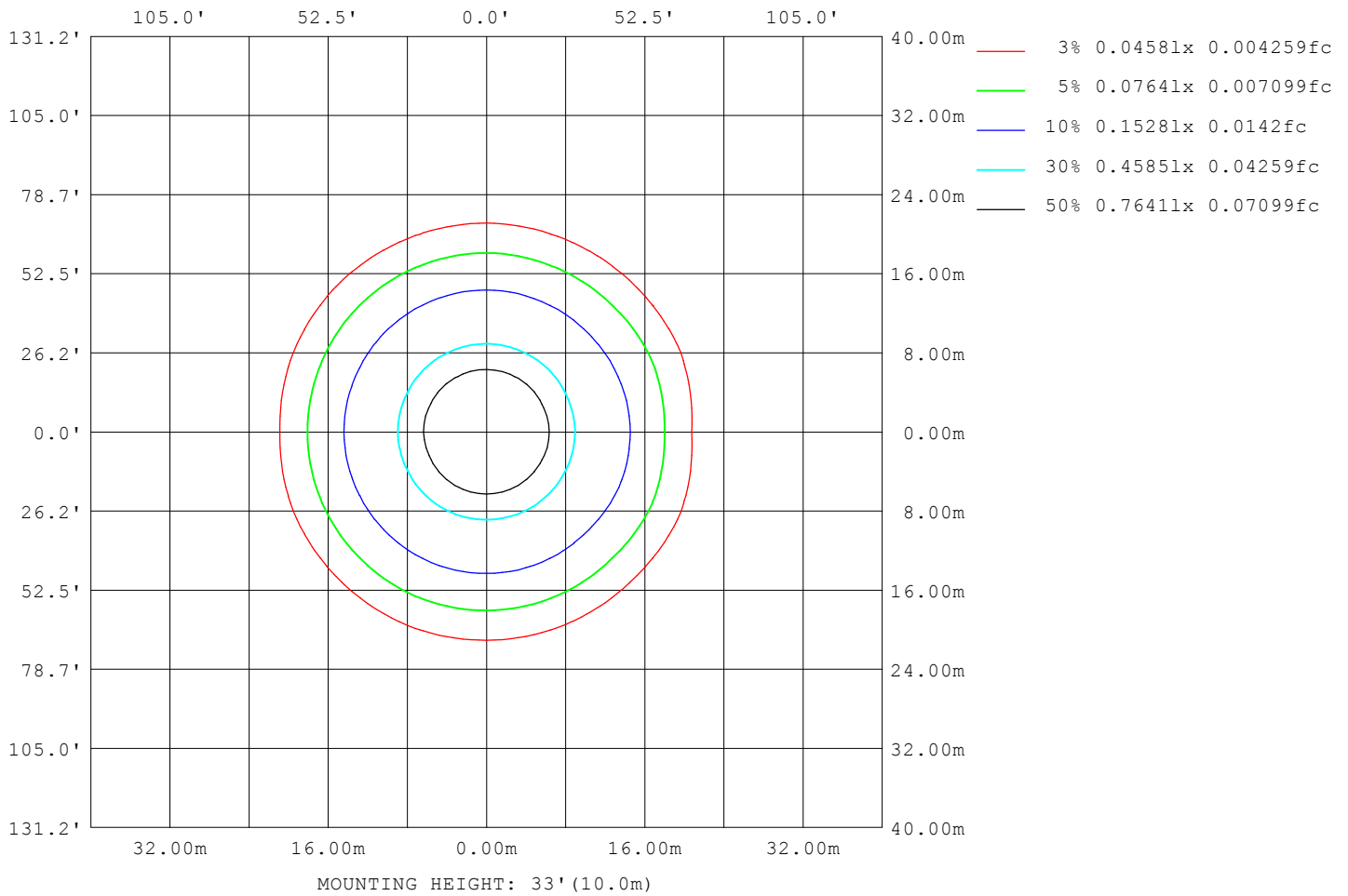
Note: The Curves indicate the illuminated area and the average illumination when the luminaire is at different distance.

C Range: 0 - 360DEG
 C Interval: 22.5DEG
 Test Speed: HIGH
 Temperature: 25.3DEG
 Operators:
 Test Date: 2023-04-25

γ Range: 0 - 180DEG
 γ Interval: 2.0DEG
 Test System: EVERFINE GO-2000B_V1 SYSTEM V2.00.450
 Humidity: 65.0%
 Test Distance: 6.040m [K=1.0000]
 Remarks:

ISOLUX DIAGRAM

NAME: Blackline 1414 profile 1m + BL11.4K	TYPE:	WEIGHT:
SPEC.:	DIM.:	SERIAL No.:
MFR.: Lightrail	SUR.: 0.08*1	Shielding Angle:



C Range: 0 - 360DEG
 C Interval: 22.5DEG
 Test Speed: HIGH
 Temperature: 25.3DEG
 Operators:
 Test Date: 2023-04-25

γ Range: 0 - 180DEG
 γ Interval: 2.0DEG
 Test System: EVERFINE GO-2000B_V1 SYSTEM V2.00.450
 Humidity: 65.0%
 Test Distance: 6.040m [K=1.0000]
 Remarks:

LED Avg.L Report

NAME: Blackline 1414 profile 1m + BL11.4K	TYPE:	WEIGHT:
SPEC.:	DIM.:	SERIAL No.:
MFR.:Lightrail	SUR.: 0.08*1	Shielding Angle:

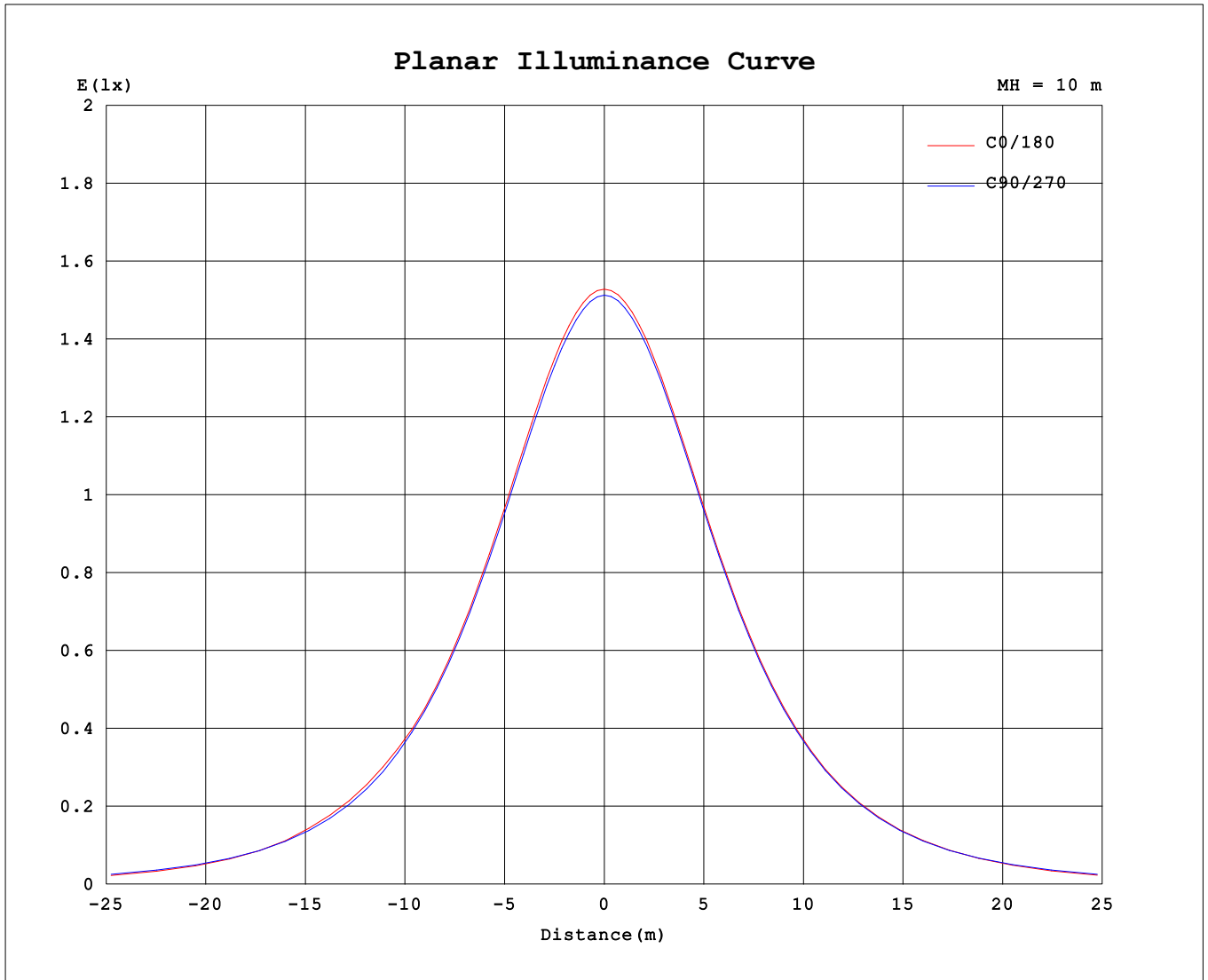
AvgL	cd/m2
L_0~180 (65) av	1591
L_0~180 (75) av	1054
L_0~180 (85) av	18
L_90~270 (65) av	1696
L_90~270 (75) av	1545
L_90~270 (85) av	1460
L_45 (65) av	1695
L_45 (75) av	1515
L_45 (85) av	1281

Standard: GB/T 29293-2012

C Range: 0 - 360DEG
 C Interval: 22.5DEG
 Test Speed: HIGH
 Temperature:25.3DEG
 Operators:
 Test Date:2023-04-25

γ Range: 0 - 180DEG
 γ Interval: 2.0DEG
 Test System:EVERFINE GO-2000B_V1 SYSTEM V2.00.450
 Humidity:65.0%
 Test Distance:6.040m [K=1.0000]
 Remarks:

Planar Illuminance Curve



C Range: 0 - 360DEG
 C Interval: 22.5DEG
 Test Speed: HIGH
 Temperature: 25.3DEG
 Operators:
 Test Date: 2023-04-25

γ Range: 0 - 180DEG
 γ Interval: 2.0DEG
 Test System: EVERFINE GO-2000B_V1 SYSTEM V2.00.450
 Humidity: 65.0%
 Test Distance: 6.040m [K=1.0000]
 Remarks:

LUMINOUS DISTRIBUTION INTENSITY DATA

NAME: Blackline 1414 profile 1m + BL11.4K	TYPE:	WEIGHT:
SPEC.:	DIM.:	SERIAL No.:
MFR.:Lightrail	SUR.: 0.08*1	Shielding Angle:

Table--1

UNIT: cd

C (DEG) \ γ (DEG)	0	22.5	45	67.5	90	112.5	135	157.5	180	202.5	225	247.5	270	292.5	315	337.5			
0	152	152	152	152	152	152	152	152	152	152	152	152	152	152	152	152			
5	151	151	151	151	151	151	151	151	151	151	151	151	151	151	151	151			
10	149	149	148	149	148	149	149	149	149	149	149	149	149	149	149	149			
15	147	146	146	146	146	146	146	147	147	147	147	147	147	147	147	146			
20	141	141	141	141	141	141	141	142	142	142	142	142	142	142	142	141			
25	137	137	137	137	137	137	137	137	138	138	138	138	138	138	138	137			
30	129	129	129	129	129	129	129	129	130	130	130	130	130	130	130	130			
35	123	123	123	123	123	123	123	123	124	124	124	124	124	124	124	123			
40	113	113	112	113	112	113	113	113	114	114	114	114	114	113	113	113			
45	106	105	105	105	105	106	106	106	106	106	106	106	106	106	106	106			
50	95.8	93.4	92.3	92.5	92.5	93.2	93.3	93.6	93.5	93.6	93.9	93.5	93.4	93.0	93.2	93.4			
55	86.6	86.2	83.4	83.5	83.6	84.3	84.4	84.7	84.5	84.6	84.9	84.5	84.4	83.9	84.2	85.6			
60	68.6	71.9	69.1	69.3	69.5	70.2	70.1	70.4	69.9	70.1	70.6	70.1	70.1	69.5	69.9	71.9			
65	56.2	61.4	59.1	59.4	59.6	60.3	60.1	60.2	57.8	59.9	60.5	60.1	60.2	59.5	59.8	61.4			
70	36.9	45.2	43.6	44.1	44.3	45.1	44.6	44.4	38.2	44.1	44.8	44.6	44.8	44.1	44.3	45.1			
75	24.4	34.2	33.2	33.9	34.2	34.9	34.3	33.9	25.3	33.4	34.3	34.4	34.7	33.9	33.9	34.2			
80	7.74	18.6	18.6	19.6	20.0	20.5	19.5	18.7	8.44	18.1	19.4	19.9	20.4	19.6	19.3	18.5			
85	0.20	9.74	10.4	11.5	11.9	12.2	11.0	9.86	0.65	9.29	10.8	11.5	12.0	11.3	10.9	9.67			
90	0.07	2.12	2.99	3.58	3.83	3.75	2.59	1.50	0.08	1.12	2.03	2.73	3.26	2.86	2.70	1.96			
95	0.07	1.39	1.47	1.54	1.61	1.48	0.76	0.55	0.09	0.54	0.29	0.47	0.71	0.66	1.07	1.44			
100	0.08	1.10	0.87	0.45	0.31	0.28	0.25	0.40	0.12	0.52	0.23	0.15	0.12	0.30	0.83	1.16			
105	0.10	0.87	0.78	0.33	0.17	0.18	0.20	0.26	0.14	0.45	0.24	0.15	0.14	0.30	0.76	0.94			
110	0.14	0.51	0.64	0.33	0.16	0.19	0.20	0.19	0.17	0.35	0.24	0.16	0.16	0.30	0.64	0.54			
115	0.16	0.39	0.57	0.33	0.16	0.21	0.20	0.21	0.20	0.27	0.25	0.18	0.18	0.30	0.56	0.41			
120	0.20	0.32	0.39	0.32	0.19	0.24	0.21	0.24	0.23	0.25	0.26	0.21	0.22	0.30	0.44	0.31			
125	0.22	0.31	0.30	0.32	0.21	0.26	0.23	0.26	0.25	0.25	0.27	0.23	0.24	0.30	0.36	0.29			
130	0.25	0.30	0.27	0.33	0.25	0.29	0.26	0.28	0.28	0.25	0.29	0.26	0.27	0.31	0.35	0.29			
135	0.28	0.30	0.28	0.33	0.27	0.31	0.28	0.30	0.30	0.27	0.31	0.28	0.29	0.31	0.35	0.30			
140	0.31	0.33	0.30	0.34	0.30	0.34	0.31	0.33	0.34	0.30	0.34	0.31	0.32	0.31	0.35	0.30			
145	0.34	0.35	0.32	0.36	0.33	0.36	0.33	0.35	0.36	0.33	0.35	0.33	0.35	0.32	0.35	0.32			
150	0.36	0.38	0.35	0.38	0.35	0.39	0.36	0.39	0.39	0.36	0.38	0.36	0.38	0.35	0.38	0.35			
155	0.38	0.40	0.37	0.39	0.37	0.41	0.37	0.40	0.40	0.37	0.40	0.38	0.40	0.36	0.39	0.37			
160	0.40	0.43	0.39	0.42	0.40	0.43	0.40	0.42	0.43	0.40	0.43	0.40	0.43	0.39	0.42	0.39			
165	0.42	0.44	0.41	0.44	0.42	0.45	0.42	0.44	0.44	0.41	0.44	0.42	0.45	0.41	0.43	0.41			
170	0.43	0.46	0.43	0.46	0.44	0.47	0.44	0.46	0.46	0.43	0.46	0.44	0.47	0.43	0.46	0.43			
175	0.44	0.46	0.45	0.46	0.46	0.47	0.45	0.46	0.46	0.44	0.46	0.45	0.47	0.44	0.47	0.44			
180	0.46	0.46	0.46	0.46	0.47	0.47	0.46	0.46	0.46	0.46	0.46	0.46	0.47	0.46	0.47	0.46			

C Range: 0 - 360DEG
 C Interval: 22.5DEG
 Test Speed: HIGH
 Temperature:25.3DEG
 Operators:
 Test Date:2023-04-25

γ Range: 0 - 180DEG
 γ Interval: 2.0DEG
 Test System:EVERFINE GO-2000B_V1 SYSTEM V2.00.450
 Humidity:65.0%
 Test Distance:6.040m [K=1.0000]
 Remarks: