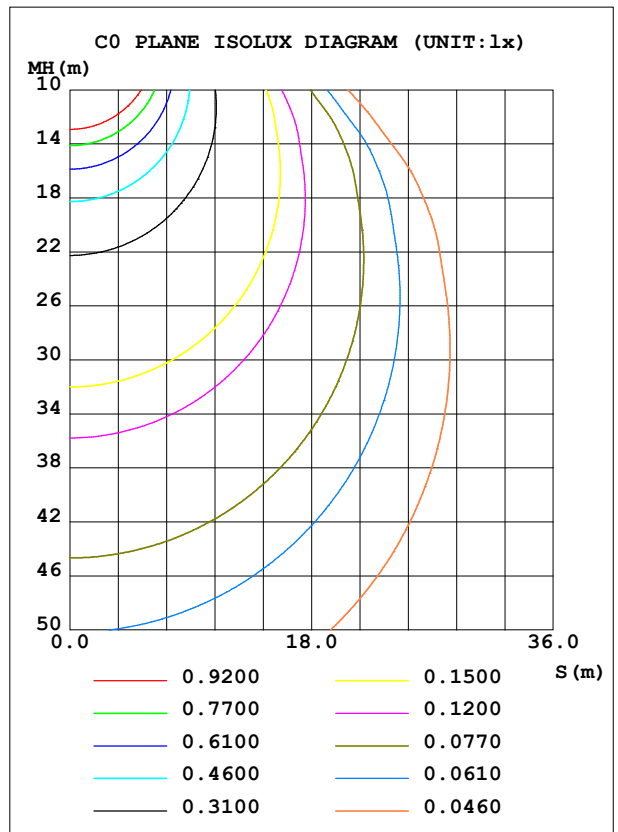
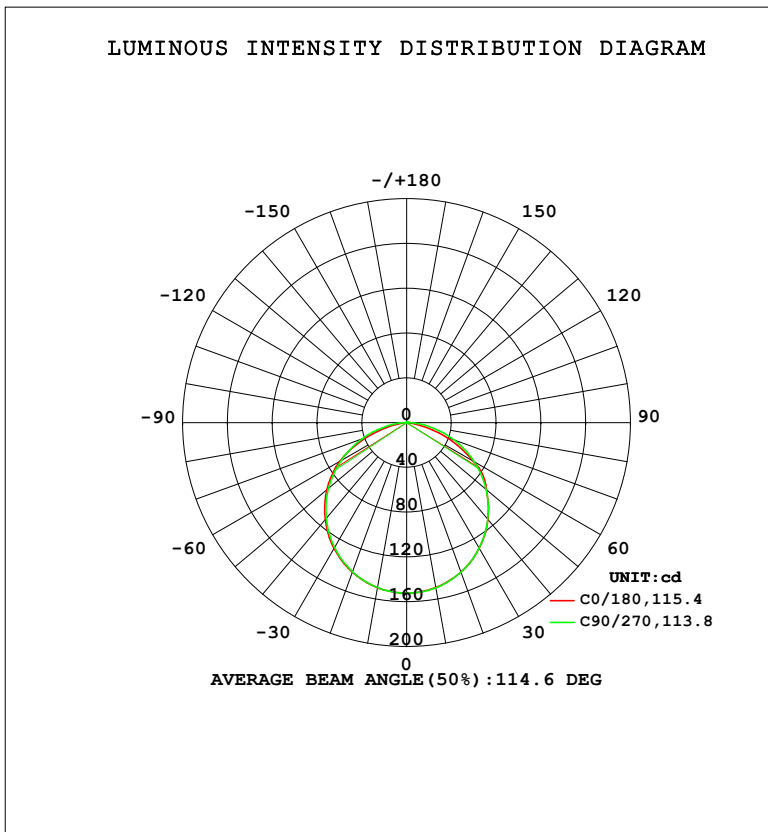


LUMINAIRE PHOTOMETRIC TEST REPORT

NAME: Blackline 1414 profile 1m + BL11.3K	TYPE:	WEIGHT:
SPEC.:	DIM.:	SERIAL No.:
MFR.:Lightrail	SUR.: 0.08*1	Shielding Angle:

DATA OF LAMP		PHOTOMETRIC DATA				Eff: 37.93 lm/W
MODEL	3000K	I _{max} (cd)	152.3	S/MH (C0/180)	1.27	
NOMINAL POWER (W)	11	LOR (%)	100.0	S/MH (C90/270)	1.26	
RATED VOLTAGE (V)	24	TOTAL FLUX (lm)	445.22	η UP, DN (C0-180)	0.3, 50.2	
NOMINAL FLUX (lm)	445.198	CIE CLASS	DIRECT	η UP, DN (C180-360)	0.3, 49.2	
LAMPS INSIDE	1	η up (%)	0.6	CIBSE SHR NOM	1.25	
TEST VOLTAGE (V)	24	η down (%)	99.4	CIBSE SHR MAX	1.35	



C Range: 0 - 360DEG
 C Interval: 22.5DEG
 Test Speed: HIGH
 Temperature: 25.3DEG
 Operators:
 Test Date: 2023-04-25

γ Range: 0 - 180DEG
 γ Interval: 2.0DEG
 Test System: EVERFINE GO-2000B_V1 SYSTEM V2.00.450
 Humidity: 65.0%
 Test Distance: 6.040m [K=1.0000]
 Remarks:

ZONAL FLUX DIAGRAM

ZONAL FLUX DIAGRAM:

γ	C0	C45	C90	C135	C180	C225	C270	C315	γ	Φ zone	Φ total	%lum,lamp
10	149.6	149.8	150.0	150.0	149.7	149.8	149.7	149.6	0- 10	14.42	14.42	3.24,3.24
20	142.0	142.1	142.2	142.5	142.1	142.1	141.7	141.8	10- 20	41.37	55.79	12.5,12.5
30	129.7	129.6	129.6	130.2	129.9	129.6	128.9	129.1	20- 30	62.86	118.7	26.6,26.7
40	113.1	112.9	112.9	113.6	113.3	112.7	111.8	112.1	30- 40	76.13	194.8	43.7,43.8
50	93.01	92.49	92.71	93.41	93.04	92.13	91.10	91.37	40- 50	79.44	274.2	61.6,61.6
60	68.41	69.19	69.73	70.20	69.17	68.42	67.47	67.61	50- 60	72.49	346.7	77.9,77.9
70	36.75	44.07	44.90	45.03	37.78	42.83	42.07	42.09	60- 70	55.48	402.2	90.3,90.3
80	7.708	19.15	20.39	19.97	8.426	17.75	17.53	17.08	70- 80	31.41	433.6	97.4,97.4
90	0.0677	2.538	3.147	2.386	0.0781	2.070	2.746	2.405	80- 90	8.864	442.5	99.4,99.4
100	0.0780	0.8499	0.1159	0.3294	0.1172	0.3276	0.3334	0.8481	90-100	1.018	443.5	99.6,99.6
110	0.1352	0.6271	0.1341	0.2951	0.1718	0.2850	0.1683	0.5927	100-110	0.4054	443.9	99.7,99.7
120	0.1925	0.3623	0.1919	0.2800	0.2238	0.2855	0.2183	0.4162	110-120	0.2913	444.2	99.8,99.8
130	0.2523	0.2772	0.2471	0.2793	0.2837	0.2911	0.2736	0.3621	120-130	0.2483	444.4	99.8,99.8
140	0.3095	0.2989	0.3023	0.3056	0.3383	0.3305	0.3288	0.3558	130-140	0.2342	444.7	99.9,99.9
150	0.3590	0.3461	0.3576	0.3504	0.3826	0.3829	0.3814	0.3795	140-150	0.2163	444.9	99.9,99.9
160	0.4006	0.3933	0.4075	0.4005	0.4268	0.4275	0.4287	0.4217	150-160	0.1801	445.1	100,100
170	0.4397	0.4327	0.4444	0.4374	0.4606	0.4642	0.4734	0.4585	160-170	0.1221	445.2	100,100
180	0.4605	0.4616	0.4733	0.4611	0.4631	0.4642	0.4839	0.4664	170-180	0.0436	445.2	100,100
DEG	LUMINOUS INTENSITY:cd									UNIT:lm		

Conical surface Flux(90deg): 242.72 lm

%lum = 54.5%

%lamp = 54.5%

Conical surface Flux(120deg): 346.71 lm

%lum = 77.9%

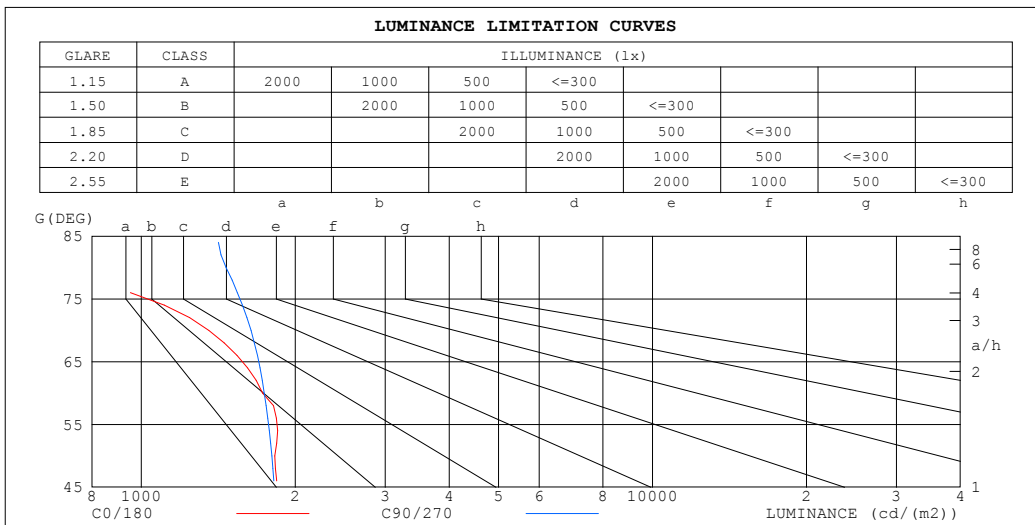
%lamp = 77.9%

C Range: 0 - 360DEG
 C Interval: 22.5DEG
 Test Speed: HIGH
 Temperature:25.3DEG
 Operators:
 Test Date:2023-04-25

γ Range: 0 - 180DEG
 γ Interval: 2.0DEG
 Test System:EVERFINE GO-2000B_V1 SYSTEM V2.00.450
 Humidity:65.0%
 Test Distance:6.040m [K=1.0000]
 Remarks:

LUMINANCE LIMITATION CURVES

NAME: Blackline 1414 profile 1m + BL11.3K	TYPE:	WEIGHT:
SPEC.:	DIM.:	SERIAL No.:
MFR.: Lightrail	SUR.: 0.08*1	Shielding Angle:



LUMINANCE cd/(m2)		
G (DEG)	C0/180	C90/270
85	34	1697
80	560	1465
75	1180	1680
70	1355	1638
65	1674	1770
60	1725	1740
55	1894	1823
50	1825	1800
45	1879	1856

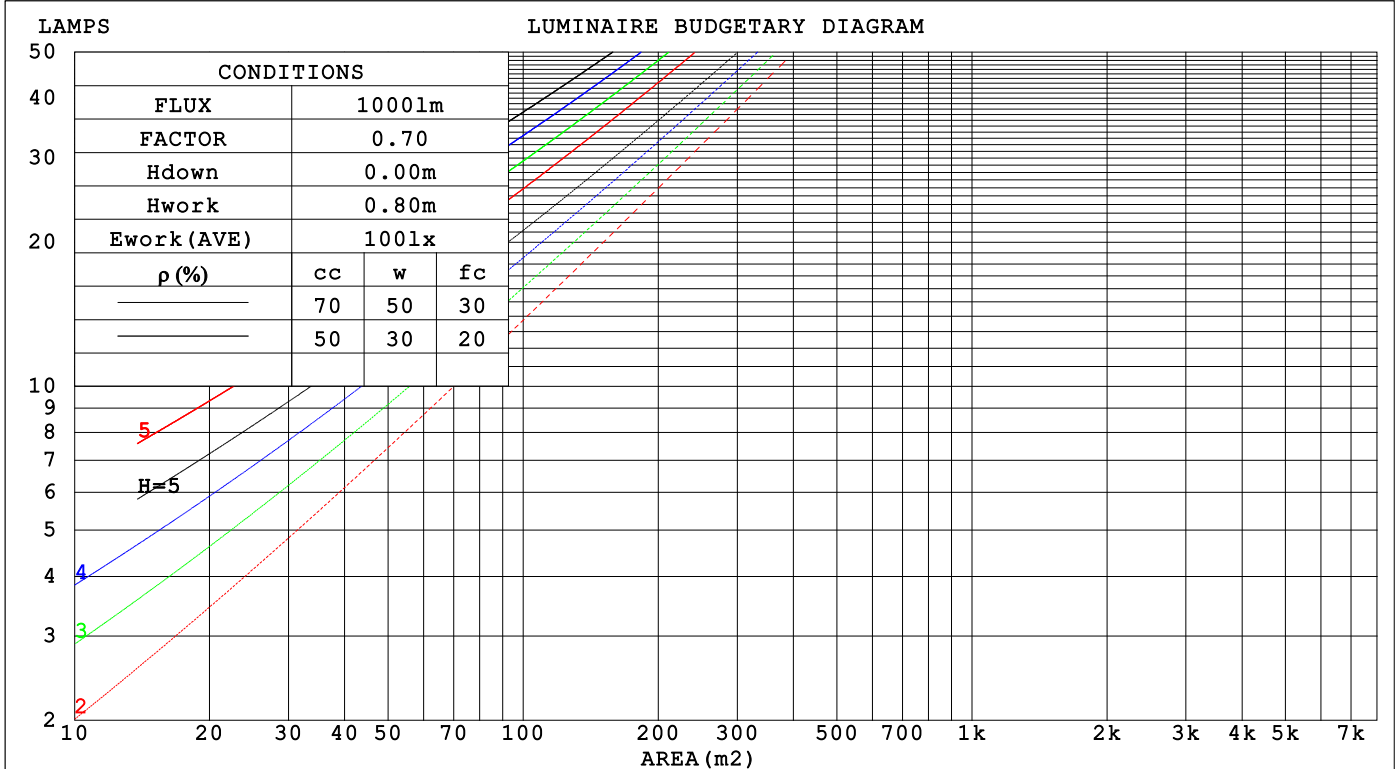
C Range: 0 - 360DEG
 C Interval: 22.5DEG
 Test Speed: HIGH
 Temperature: 25.3DEG
 Operators:
 Test Date: 2023-04-25

γ Range: 0 - 180DEG
 γ Interval: 2.0DEG
 Test System: EVERFINE GO-2000B_V1 SYSTEM V2.00.450
 Humidity: 65.0%
 Test Distance: 6.040m [K=1.0000]
 Remarks:

CU AND LUMINAIRE BUDGETARY ESTIMATE DIAGRAM

NAME: Blackline 1414 profile 1m + BL11.3K	TYPE:	WEIGHT:
SPEC.:	DIM.:	SERIAL No.:
MFR.:Lightrail	SUR.: 0.08*1	Shielding Angle:

pcc	80%			70%			50%			30%			10%			0
pw	50%	30%	10%	50%	30%	10%	50%	30%	10%	50%	30%	10%	50%	30%	10%	0
pfc	20%			20%			20%			20%			20%			0
RCR	RCR:Room Cavity Ratio						Coefficients of Utilization(CU)									
0.0	1.19	1.19	1.19	1.16	1.16	1.16	1.11	1.11	1.11	1.06	1.06	1.06	1.01	1.01	1.01	.99
1.0	1.04	.99	.95	1.01	.97	.94	.97	.94	.91	.93	.90	.88	.89	.87	.85	.83
2.0	.90	.83	.77	.88	.82	.76	.85	.79	.75	.81	.77	.73	.78	.74	.71	.69
3.0	.79	.71	.64	.77	.70	.64	.74	.68	.62	.71	.66	.61	.69	.64	.60	.58
4.0	.70	.61	.54	.69	.60	.54	.66	.59	.53	.63	.57	.52	.61	.56	.51	.49
5.0	.62	.53	.47	.61	.53	.46	.59	.51	.46	.57	.50	.45	.55	.49	.45	.42
6.0	.56	.47	.41	.55	.47	.40	.53	.46	.40	.51	.45	.40	.50	.44	.39	.37
7.0	.51	.42	.36	.50	.42	.36	.48	.41	.35	.47	.40	.35	.45	.39	.35	.33
8.0	.46	.38	.32	.46	.37	.32	.44	.37	.31	.43	.36	.31	.42	.36	.31	.29
9.0	.42	.34	.29	.42	.34	.29	.41	.33	.28	.40	.33	.28	.38	.32	.28	.26
10.0	.39	.31	.26	.39	.31	.26	.38	.31	.26	.37	.30	.26	.36	.30	.25	.24



C Range: 0 - 360DEG
 C Interval: 22.5DEG
 Test Speed: HIGH
 Temperature:25.3DEG
 Operators:
 Test Date:2023-04-25

γ Range: 0 - 180DEG
 γ Interval: 2.0DEG
 Test System:EVERFINE GO-2000B_V1 SYSTEM V2.00.450
 Humidity:65.0%
 Test Distance:6.040m [K=1.0000]
 Remarks:

WEC AND CCEC

NAME: Blackline 1414 profile 1m + BL11.3K	TYPE:	WEIGHT:
SPEC.:	DIM.:	SERIAL No.:
MFR.:Lightrail	SUR.: 0.08*1	Shielding Angle:

ρ _{CC}	80%			70%			50%			30%			10%			0
ρ _w	50%	30%	10%	50%	30%	10%	50%	30%	10%	50%	30%	10%	50%	30%	10%	0
ρ _{fc}	20%			20%			20%			20%			20%			0
RCR	RCR:Room Cavity Ratio						Wall Exitance Coefficients(WEC)									
0.0																
1.0	.312	.178	.056	.305	.174	.055	.291	.167	.053	.279	.161	.052	.267	.155	.050	
2.0	.293	.161	.049	.287	.158	.049	.275	.153	.047	.264	.148	.046	.254	.143	.045	
3.0	.271	.144	.043	.266	.142	.043	.255	.138	.042	.245	.134	.041	.236	.131	.040	
4.0	.250	.130	.038	.245	.128	.038	.236	.125	.037	.227	.122	.037	.219	.119	.036	
5.0	.231	.118	.034	.227	.116	.034	.218	.114	.033	.211	.111	.033	.203	.109	.033	
6.0	.214	.107	.031	.210	.106	.031	.203	.104	.030	.196	.102	.030	.189	.100	.030	
7.0	.199	.099	.028	.196	.098	.028	.189	.096	.028	.183	.094	.027	.177	.092	.027	
8.0	.186	.091	.026	.183	.090	.025	.177	.088	.025	.171	.087	.025	.166	.085	.025	
9.0	.174	.084	.024	.172	.084	.023	.166	.082	.023	.161	.081	.023	.156	.079	.023	
10.0	.164	.079	.022	.161	.078	.022	.157	.077	.022	.152	.075	.021	.148	.074	.021	

ρ _{CC}	80%			70%			50%			30%			10%			0
ρ _w	50%	30%	10%	50%	30%	10%	50%	30%	10%	50%	30%	10%	50%	30%	10%	0
ρ _{fc}	20%			20%			20%			20%			20%			0
RCR	RCR:Room Cavity Ratio						Ceiling Cavity Exitance Coefficients(CCEC)									
0.0	.195	.195	.195	.167	.167	.167	.114	.114	.114	.065	.065	.065	.021	.021	.021	
1.0	.185	.161	.139	.158	.138	.120	.108	.095	.083	.062	.055	.048	.020	.018	.016	
2.0	.177	.137	.103	.152	.118	.089	.104	.081	.062	.060	.047	.036	.019	.015	.012	
3.0	.170	.119	.079	.145	.103	.068	.100	.071	.048	.058	.042	.028	.019	.014	.009	
4.0	.162	.106	.063	.139	.091	.055	.096	.064	.039	.055	.037	.023	.018	.012	.007	
5.0	.155	.095	.052	.133	.083	.045	.091	.058	.032	.053	.034	.019	.017	.011	.006	
6.0	.147	.087	.044	.127	.075	.038	.087	.053	.027	.051	.031	.016	.016	.010	.005	
7.0	.141	.080	.038	.121	.070	.033	.084	.049	.023	.049	.029	.014	.016	.009	.005	
8.0	.134	.074	.034	.115	.065	.029	.080	.045	.021	.046	.027	.012	.015	.009	.004	
9.0	.128	.070	.030	.110	.060	.026	.076	.042	.019	.044	.025	.011	.014	.008	.004	
10.0	.122	.065	.027	.105	.057	.024	.073	.040	.017	.043	.024	.010	.014	.008	.003	

C Range: 0 - 360DEG
 C Interval: 22.5DEG
 Test Speed: HIGH
 Temperature:25.3DEG
 Operators:
 Test Date:2023-04-25

γ Range: 0 - 180DEG
 γ Interval: 2.0DEG
 Test System:EVERFINE GO-2000B_V1 SYSTEM V2.00.450
 Humidity:65.0%
 Test Distance:6.040m [K=1.0000]
 Remarks:

UGR(Unified Glare Rating) Table

NAME: Blackline 1414 profile 1m + BL11.3K		TYPE:					WEIGHT:					
SPEC.:		DIM.:					SERIAL No.:					
MFR.:Lightrail		SUR.: 0.08*1					Shielding Angle:					
ceiling/cavity		0.7	0.7	0.5	0.5	0.3	0.7	0.7	0.5	0.5	0.3	
walls		0.5	0.3	0.5	0.3	0.3	0.5	0.3	0.5	0.3	0.3	
working plane		0.2	0.2	0.2	0.2	0.2	0.2	0.2	0.2	0.2	0.2	
Room dimensions		Viewed crosswise					Viewed endwise					
x = 2H y = 2H		17.8	19.3	18.1	19.5	19.7	17.7	19.2	18.0	19.4	19.7	
	3H	19.2	20.6	19.5	20.9	21.1	19.3	20.7	19.6	21.0	21.2	
	4H	19.6	21.0	20.0	21.2	21.5	20.0	21.3	20.3	21.6	21.8	
	6H	19.8	21.0	20.1	21.3	21.6	20.5	21.7	20.8	22.0	22.3	
	8H	19.8	21.0	20.1	21.3	21.6	20.6	21.9	21.0	22.2	22.5	
	12H	19.7	20.9	20.1	21.2	21.5	20.8	21.9	21.1	22.2	22.6	
	4H	2H	18.4	19.7	18.7	20.0	20.3	18.3	19.7	18.7	19.9	20.2
		3H	20.1	21.2	20.4	21.5	21.9	20.1	21.3	20.5	21.6	21.9
		4H	20.7	21.7	21.1	22.1	22.4	20.9	22.0	21.3	22.3	22.7
		6H	21.0	21.9	21.4	22.3	22.7	21.6	22.5	22.0	22.9	23.2
		8H	21.0	21.9	21.4	22.3	22.7	21.8	22.7	22.2	23.0	23.4
		12H	21.0	21.8	21.4	22.2	22.6	22.0	22.8	22.4	23.2	23.6
	8H	4H	21.0	21.9	21.4	22.2	22.6	21.2	22.1	21.6	22.5	22.9
		6H	21.5	22.2	22.0	22.7	23.1	22.0	22.7	22.4	23.1	23.6
		8H	21.6	22.3	22.1	22.7	23.2	22.3	23.0	22.8	23.4	23.9
		12H	21.7	22.2	22.2	22.7	23.2	22.6	23.1	23.1	23.6	24.1
	12H	4H	21.0	21.8	21.4	22.2	22.6	21.2	22.0	21.6	22.4	22.8
		6H	21.6	22.2	22.0	22.7	23.1	22.0	22.7	22.5	23.1	23.6
		8H	21.8	22.3	22.2	22.8	23.3	22.4	23.0	22.9	23.4	23.9
Variations with the observer position at spacings(CIE Pub.117):												
S = 1.0H		+ 0.1 / - 0.2					+ 0.1 / - 0.2					
1.5H		+ 0.2 / - 0.4					+ 0.2 / - 0.3					
2.0H		+ 0.2 / - 0.5					+ 0.1 / - 0.3					

CIE Pub.117, 445.2 lm Total Lamp Luminous Flux Correct (8log(F/F0) = -2.8)
 Area: 0.08 m2

C Range: 0 - 360DEG
 C Interval: 22.5DEG
 Test Speed: HIGH
 Temperature:25.3DEG
 Operators:
 Test Date:2023-04-25

γ Range: 0 - 180DEG
 γ Interval: 2.0DEG
 Test System:EVERFINE GO-2000B_V1 SYSTEM V2.00.450
 Humidity:65.0%
 Test Distance:6.040m [K=1.0000]
 Remarks:

UTILIZATION FACTORS TABLE

NAME: Blackline 1414 profile 1m + BL11.3K	TYPE:	WEIGHT:
SPEC.:	DIM.:	SERIAL No.:
MFR.:Lightrail	SUR.: 0.08*1	Shielding Angle:

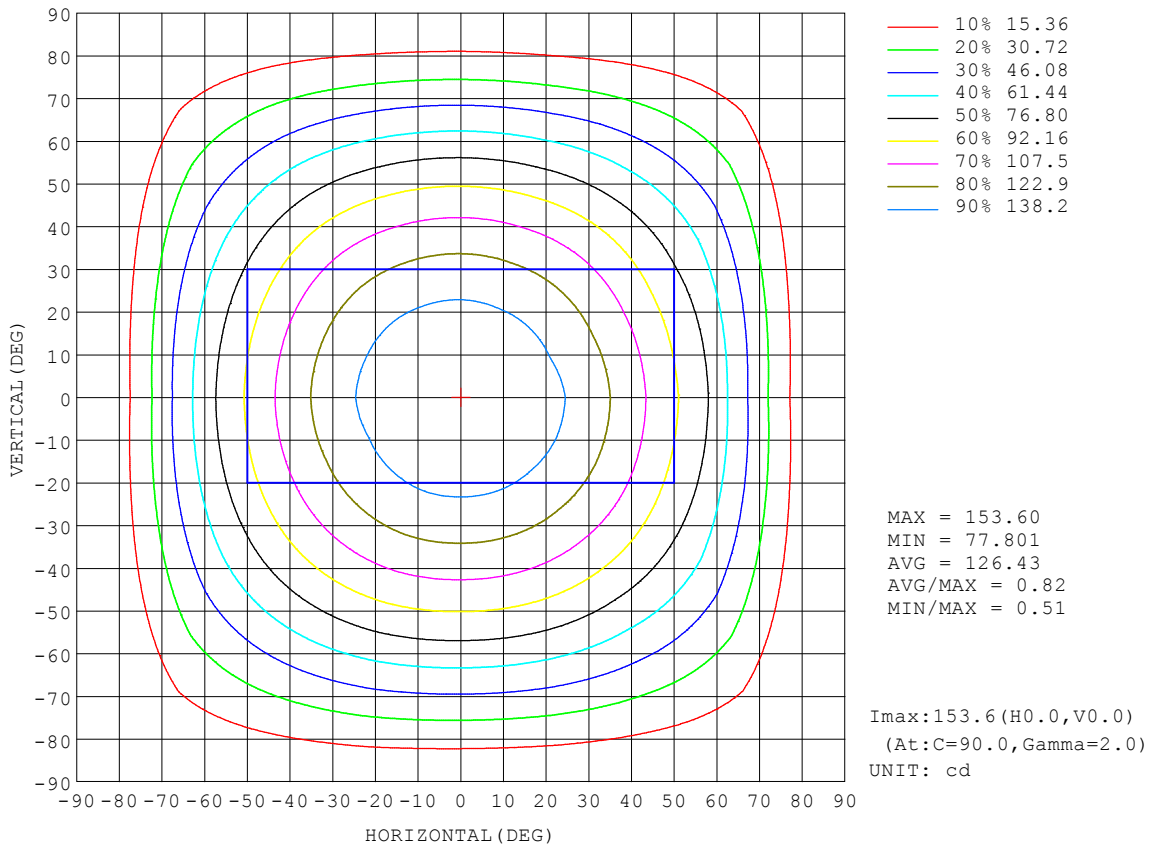
REFLECTANCE										
Ceiling	0.8	0.8	0.8	0.7	0.7	0.7	0.5	0.5	0.5	0
Walls	0.7	0.5	0.3	0.7	0.5	0.3	0.7	0.5	0.3	0
Working plane	0.2	0.2	0.2	0.2	0.2	0.2	0.2	0.2	0.2	0
ROOM INDEX	UTILIZATION FACTORS (PERCENT) $k(RI) \times RCR = 5$									
k = 0.60	57	45	38	56	45	38	55	45	38	32
0.80	67	55	48	66	55	48	64	54	47	40
1.00	75	64	57	74	64	57	72	65	56	49
1.25	83	72	65	81	71	64	78	70	63	56
1.50	88	78	71	86	77	70	83	75	69	61
2.00	95	86	79	93	85	79	89	82	77	69
2.50	98	91	84	96	89	84	92	86	82	73
3.00	102	95	89	100	93	88	96	90	86	77
4.00	106	100	95	103	98	94	99	95	91	82
5.00	108	103	99	106	101	98	101	98	95	85
ROOM INDEX	UF(total)									Direct
According to DIN EN 13032-2 2004			Suspended				SHRNOM = 1.25			

C Range: 0 - 360DEG
 C Interval: 22.5DEG
 Test Speed: HIGH
 Temperature:25.3DEG
 Operators:
 Test Date:2023-04-25

γ Range: 0 - 180DEG
 γ Interval: 2.0DEG
 Test System:EVERFINE GO-2000B_V1 SYSTEM V2.00.450
 Humidity:65.0%
 Test Distance:6.040m [K=1.0000]
 Remarks:

ISOCANDELA DIAGRAM

NAME: Blackline 1414 profile 1m + BL11.3K	TYPE:	WEIGHT:
SPEC.:	DIM.:	SERIAL No.:
MFR.:Lightrail	SUR.: 0.08*1	Shielding Angle:



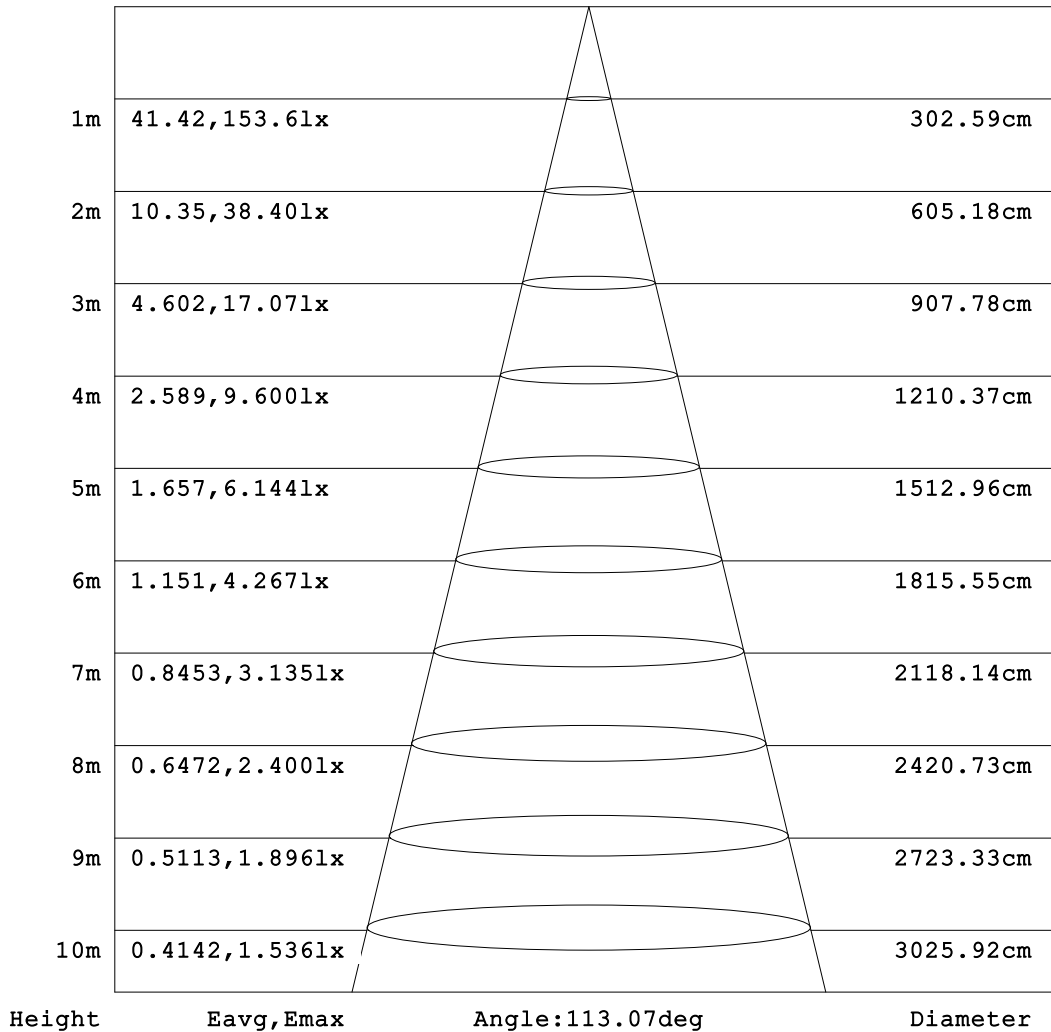
C Range: 0 - 360DEG
 C Interval: 22.5DEG
 Test Speed: HIGH
 Temperature:25.3DEG
 Operators:
 Test Date:2023-04-25

γ Range: 0 - 180DEG
 γ Interval: 2.0DEG
 Test System:EVERFINE GO-2000B_V1 SYSTEM V2.00.450
 Humidity:65.0%
 Test Distance:6.040m [K=1.0000]
 Remarks:

AAI Figure

NAME: Blackline 1414 profile 1m + BL11.3K	TYPE:	WEIGHT:
SPEC.:	DIM.:	SERIAL No.:
MFR.:Lightrail	SUR.: 0.08*1	Shielding Angle:

Flux out:333.3 lm



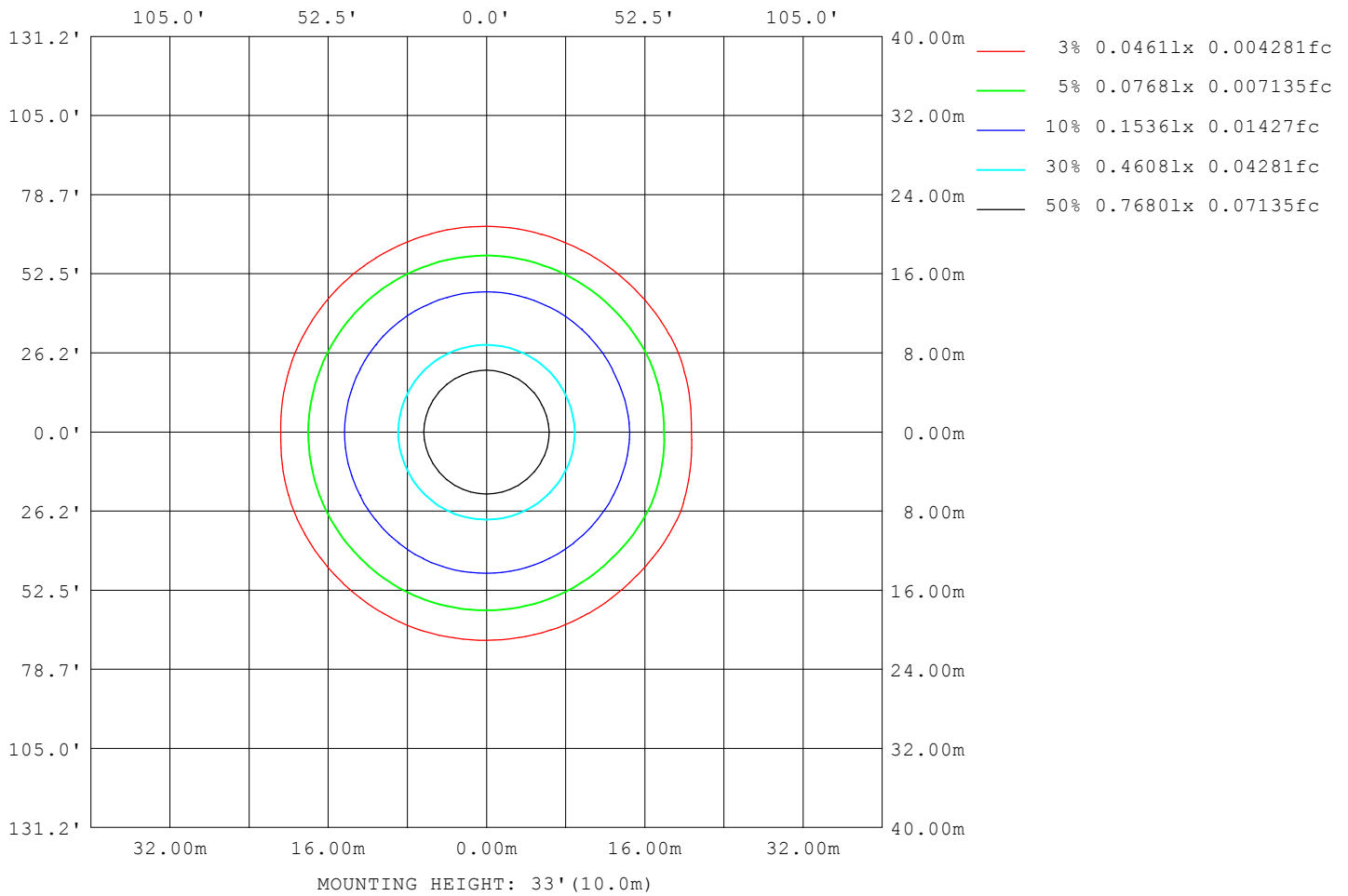
Note: The Curves indicate the illuminated area and the average illumination when the luminaire is at different distance.

C Range: 0 - 360DEG
 C Interval: 22.5DEG
 Test Speed: HIGH
 Temperature: 25.3DEG
 Operators:
 Test Date: 2023-04-25

γ Range: 0 - 180DEG
 γ Interval: 2.0DEG
 Test System: EVERFINE GO-2000B_V1 SYSTEM V2.00.450
 Humidity: 65.0%
 Test Distance: 6.040m [K=1.0000]
 Remarks:

ISOLUX DIAGRAM

NAME: Blackline 1414 profile 1m + BL11.3K	TYPE:	WEIGHT:
SPEC.:	DIM.:	SERIAL No.:
MFR.: Lightrail	SUR.: 0.08*1	Shielding Angle:



C Range: 0 - 360DEG
 C Interval: 22.5DEG
 Test Speed: HIGH
 Temperature: 25.3DEG
 Operators:
 Test Date: 2023-04-25

γ Range: 0 - 180DEG
 γ Interval: 2.0DEG
 Test System: EVERFINE GO-2000B_V1 SYSTEM V2.00.450
 Humidity: 65.0%
 Test Distance: 6.040m [K=1.0000]
 Remarks:

LED Avg.L Report

NAME: Blackline 1414 profile 1m + BL11.3K	TYPE:	WEIGHT:
SPEC.:	DIM.:	SERIAL No.:
MFR.:Lightrail	SUR.: 0.08*1	Shielding Angle:

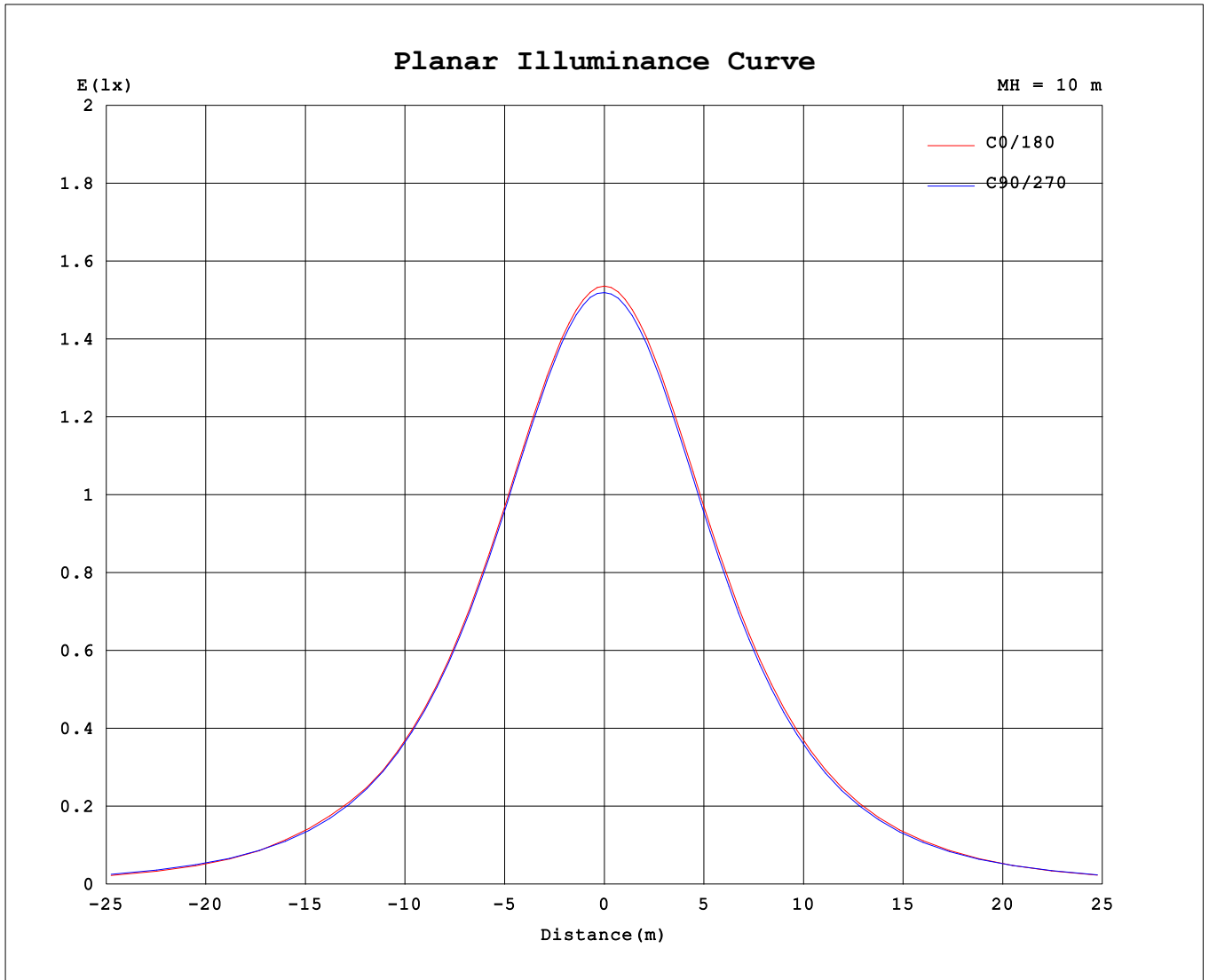
AvgL	cd/m2
L_0~180 (65) av	1579
L_0~180 (75) av	1048
L_0~180 (85) av	16
L_90~270 (65) av	1662
L_90~270 (75) av	1491
L_90~270 (85) av	1288
L_45 (65) av	1666
L_45 (75) av	1482
L_45 (85) av	1181

Standard: GB/T 29293-2012

C Range: 0 - 360DEG
 C Interval: 22.5DEG
 Test Speed: HIGH
 Temperature:25.3DEG
 Operators:
 Test Date:2023-04-25

γ Range: 0 - 180DEG
 γ Interval: 2.0DEG
 Test System:EVERFINE GO-2000B_V1 SYSTEM V2.00.450
 Humidity:65.0%
 Test Distance:6.040m [K=1.0000]
 Remarks:

Planar Illuminance Curve



C Range: 0 - 360DEG
 C Interval: 22.5DEG
 Test Speed: HIGH
 Temperature:25.3DEG
 Operators:
 Test Date:2023-04-25

γ Range: 0 - 180DEG
 γ Interval: 2.0DEG
 Test System:EVERFINE GO-2000B_V1 SYSTEM V2.00.450
 Humidity:65.0%
 Test Distance:6.040m [K=1.0000]
 Remarks:

LUMINOUS DISTRIBUTION INTENSITY DATA

NAME: Blackline 1414 profile 1m + BL11.3K	TYPE:	WEIGHT:
SPEC.:	DIM.:	SERIAL No.:
MFR.:Lightrail	SUR.: 0.08*1	Shielding Angle:

Table--1

UNIT: cd

C (DEG) \ γ (DEG)	0	22.5	45	67.5	90	112.5	135	157.5	180	202.5	225	247.5	270	292.5	315	337.5			
0	152	152	152	152	152	152	152	152	152	152	152	152	152	152	152	152			
5	152	152	152	152	152	152	152	152	152	152	152	152	152	152	152	152			
10	150	150	150	150	150	150	150	150	150	150	150	150	150	150	150	150			
15	147	147	147	147	147	148	148	148	147	147	147	147	147	147	147	147			
20	142	142	142	142	142	142	142	143	142	142	142	142	142	141	142	142			
25	138	138	138	138	138	138	138	138	138	138	138	137	137	137	137	137			
30	130	130	130	130	130	130	130	130	130	130	130	129	129	129	129	129			
35	124	124	123	123	123	124	124	124	124	123	123	123	122	122	123	123			
40	113	113	113	113	113	114	114	114	113	113	113	112	112	111	112	113			
45	105	106	105	105	105	106	106	106	106	105	105	104	104	104	104	105			
50	93.0	93.0	92.5	92.7	92.7	93.4	93.4	93.6	93.0	92.4	92.1	91.3	91.1	90.7	91.4	91.9			
55	86.2	84.0	83.5	83.8	83.8	84.5	84.5	84.6	83.9	83.3	82.9	82.2	81.9	81.5	82.1	82.8			
60	68.4	71.3	69.2	69.6	69.7	70.4	70.2	70.2	69.2	68.6	68.4	67.7	67.5	67.0	67.6	69.8			
65	56.1	61.3	59.3	59.8	60.0	60.6	60.3	60.1	57.1	58.5	58.3	57.6	57.5	56.9	57.6	59.4			
70	36.8	45.2	44.1	44.7	44.9	45.5	45.0	44.7	37.8	42.9	42.8	42.2	42.1	41.5	42.1	43.4			
75	24.2	34.5	33.9	34.6	34.8	35.4	34.8	34.3	25.2	32.4	32.5	32.0	31.9	31.2	31.8	32.7			
80	7.71	19.0	19.2	20.1	20.4	20.8	20.0	19.2	8.43	17.4	17.7	17.5	17.5	16.9	17.1	17.3			
85	0.24	9.97	10.6	11.6	11.9	12.1	11.2	10.3	0.62	8.72	9.34	9.47	9.61	9.05	8.93	8.55			
90	0.07	1.93	2.54	3.01	3.15	3.14	2.39	1.64	0.08	1.39	2.07	2.49	2.75	2.54	2.41	1.86			
95	0.07	1.26	1.08	0.89	0.81	0.77	0.57	0.66	0.09	0.73	0.86	1.13	1.31	1.28	1.36	1.33			
100	0.08	1.03	0.85	0.48	0.12	0.15	0.33	0.32	0.12	0.62	0.33	0.31	0.33	0.50	0.85	1.04			
105	0.10	0.83	0.77	0.45	0.12	0.16	0.31	0.28	0.14	0.56	0.29	0.19	0.17	0.36	0.72	0.85			
110	0.14	0.48	0.63	0.40	0.13	0.18	0.30	0.28	0.17	0.35	0.28	0.19	0.17	0.32	0.59	0.50			
115	0.16	0.36	0.55	0.38	0.16	0.20	0.29	0.27	0.19	0.28	0.29	0.19	0.19	0.32	0.53	0.38			
120	0.19	0.31	0.36	0.33	0.19	0.23	0.28	0.27	0.22	0.24	0.29	0.21	0.22	0.32	0.42	0.32			
125	0.22	0.30	0.29	0.33	0.21	0.25	0.28	0.27	0.25	0.25	0.29	0.23	0.24	0.32	0.37	0.30			
130	0.25	0.30	0.28	0.32	0.25	0.28	0.28	0.28	0.28	0.25	0.29	0.25	0.27	0.32	0.36	0.30			
135	0.28	0.31	0.28	0.33	0.27	0.30	0.29	0.30	0.30	0.27	0.30	0.28	0.30	0.32	0.36	0.30			
140	0.31	0.33	0.30	0.35	0.30	0.33	0.31	0.33	0.34	0.30	0.33	0.30	0.33	0.33	0.36	0.31			
145	0.33	0.35	0.32	0.36	0.33	0.35	0.32	0.35	0.36	0.32	0.35	0.32	0.35	0.33	0.36	0.33			
150	0.36	0.38	0.35	0.38	0.36	0.38	0.35	0.38	0.38	0.36	0.38	0.35	0.38	0.35	0.38	0.36			
155	0.38	0.39	0.37	0.39	0.38	0.41	0.38	0.40	0.40	0.37	0.40	0.37	0.40	0.37	0.39	0.37			
160	0.40	0.43	0.39	0.42	0.41	0.43	0.40	0.43	0.43	0.40	0.43	0.40	0.43	0.39	0.42	0.39			
165	0.42	0.44	0.41	0.44	0.42	0.45	0.42	0.45	0.44	0.42	0.44	0.42	0.45	0.41	0.44	0.41			
170	0.44	0.46	0.43	0.46	0.44	0.47	0.44	0.46	0.46	0.43	0.46	0.44	0.47	0.43	0.46	0.43			
175	0.44	0.46	0.45	0.47	0.46	0.47	0.45	0.46	0.46	0.44	0.46	0.45	0.48	0.45	0.47	0.44			
180	0.46	0.46	0.46	0.46	0.47	0.47	0.46	0.46	0.46	0.46	0.46	0.47	0.48	0.46	0.47	0.46			

C Range: 0 - 360DEG
 C Interval: 22.5DEG
 Test Speed: HIGH
 Temperature:25.3DEG
 Operators:
 Test Date:2023-04-25

γ Range: 0 - 180DEG
 γ Interval: 2.0DEG
 Test System:EVERFINE GO-2000B_V1 SYSTEM V2.00.450
 Humidity:65.0%
 Test Distance:6.040m [K=1.0000]
 Remarks: