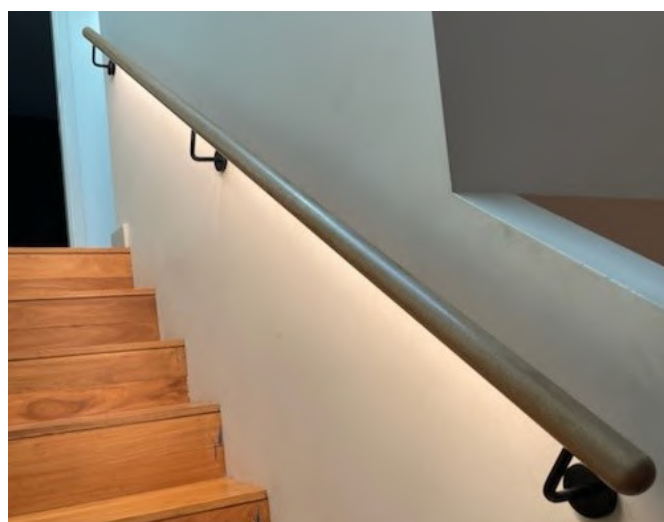
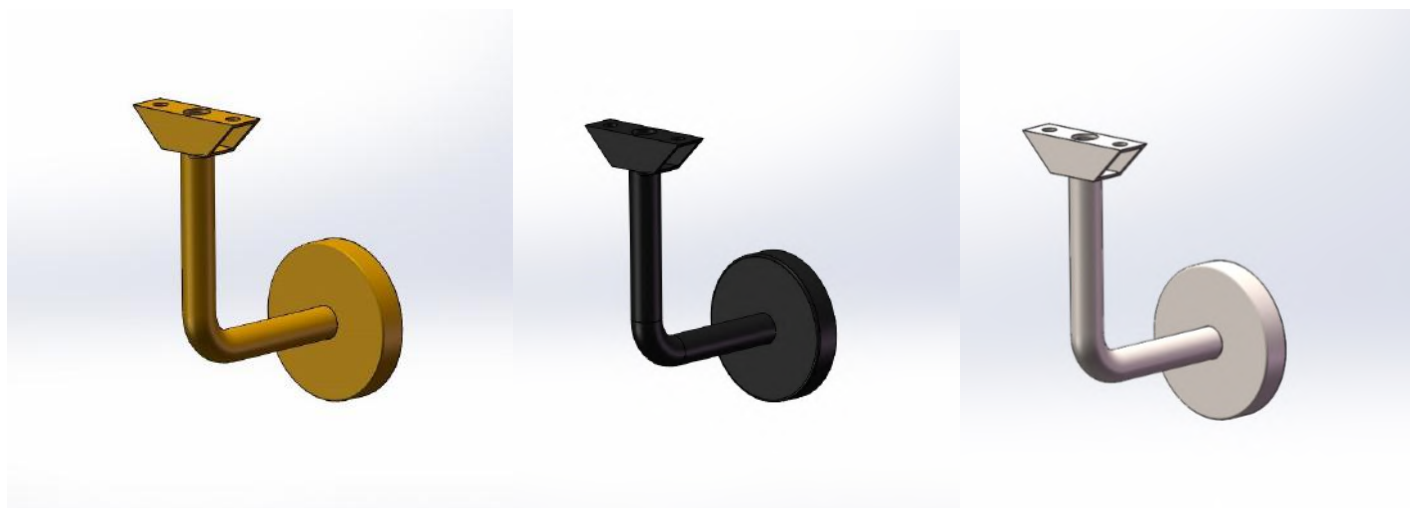


LIGHTRAIL LED HANDRAIL BRACKETS—ALBION

The Lightrail Albion brackets are made from 316 stainless steel and are supplied in solid and hollow versions. The hollow version enables 24v cable to disappear for a concealed power entry to your LED handrail system.

Both types are supplied with the specially designed MB1414 hollow fixing block to suit Lightrail systems with 15x15mm rebate

This unique addition to the bracket enables LED strip to remain continuous and avoids unnecessary joins to complete a linear, dot free and clean illuminated handrail without interruption.



LIGHTRAIL ALBION BRACKETS



MATT BLACK



MATT WHITE



SATIN BRASS



SATIN STAINLESS



UNIQUE DESIGN FOR DOT FREE CONTINUOUS LIGHT WITHOUT THE NEED FOR MULTIPLE CONNECTIONS. LIGHTRAIL BLACKLINE LED STRIP CAN RUN UP TO 25m

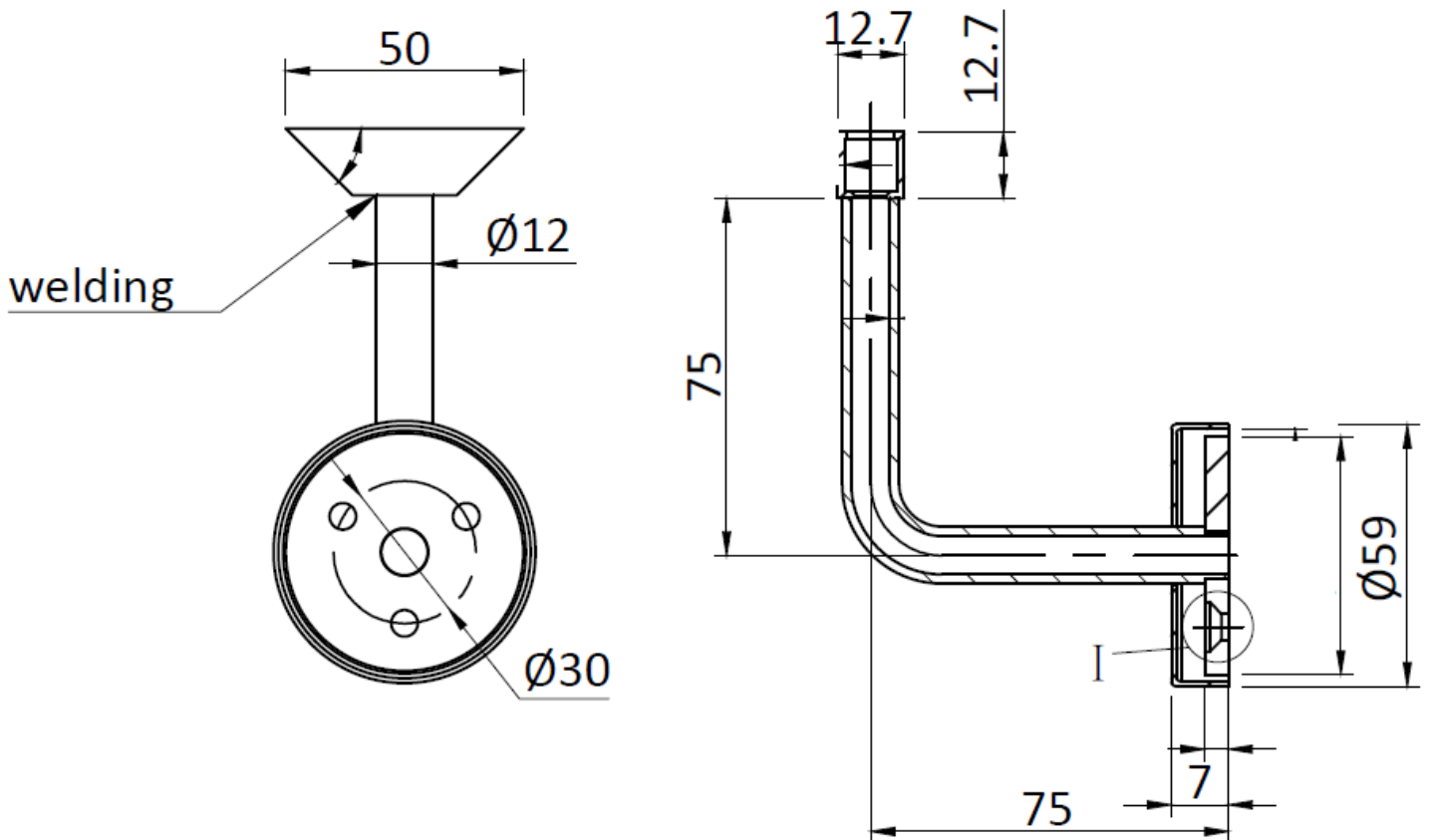
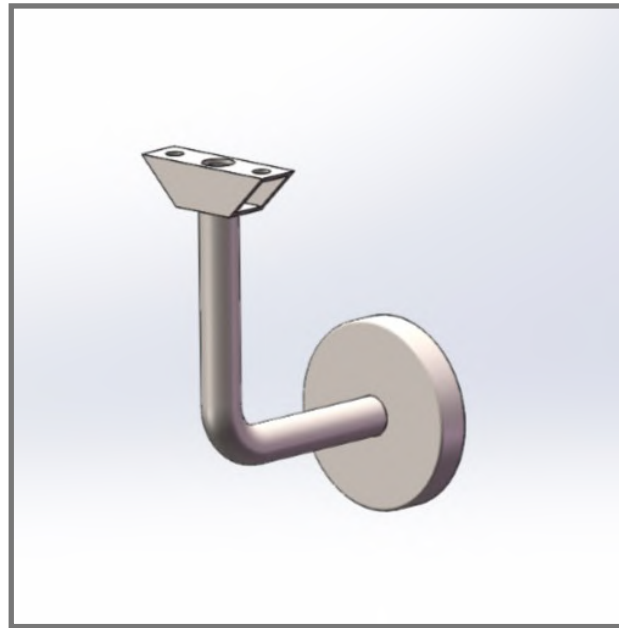


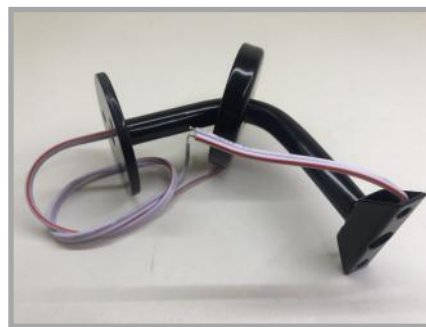
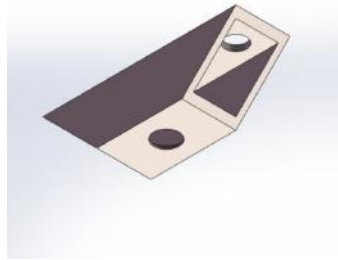
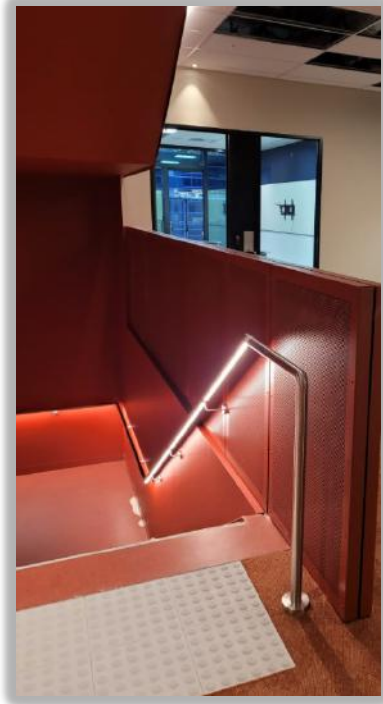
LED STRIP PASSES THROUGH

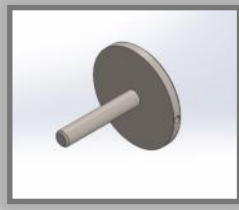
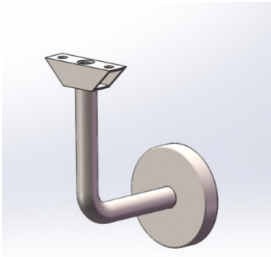


DIFFUSER SLIDES OVER









CODE		FINISH	
SSABS	ALBION BRACKET 316 STAINLESS STEEL	SOLID	SATIN STAINLESS
SSABS-MB	ALBION BRACKET 316 STAINLESS STEEL	SOLID	MATT BLACK
SSABS-MW	ALBION BRACKET 316 STAINLESS STEEL	SOLID	MATT WHITE
SSABS-SB	ALBION BRACKET 316 STAINLESS STEEL	SOLID	SATIN BRASS

CODE		FINISH	
SSABH	ALBION BRACKET 316 STAINLESS STEEL	HOLLOW	SATIN STAINLESS
SSABH-MB	ALBION BRACKET 316 STAINLESS STEEL	HOLLOW	MATT BLACK
SSABH-MW	ALBION BRACKET 316 STAINLESS STEEL	HOLLOW	MATT WHITE
SSABH-SB	ALBION BRACKET 316 STAINLESS STEEL	HOLLOW	SATIN BRASS

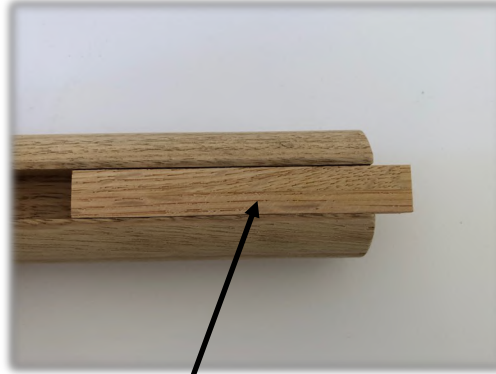


CODE		FINISH	
SSAGA	GLASS ADAPTOR SUIT ALBION AND CHIFLY BRACKETS	HOLLOW	316 SS SATIN

EXAMPLES OF LED HANDRAIL COMPONENTRY BELOW UTILISING LIGHTRAIL ALBION BRACKETS ON 43mm VICTORIAN ASH SYSTEM



Cable allowance in infill



INFILL 100mm or 1200mm



Cable allowance in bend

