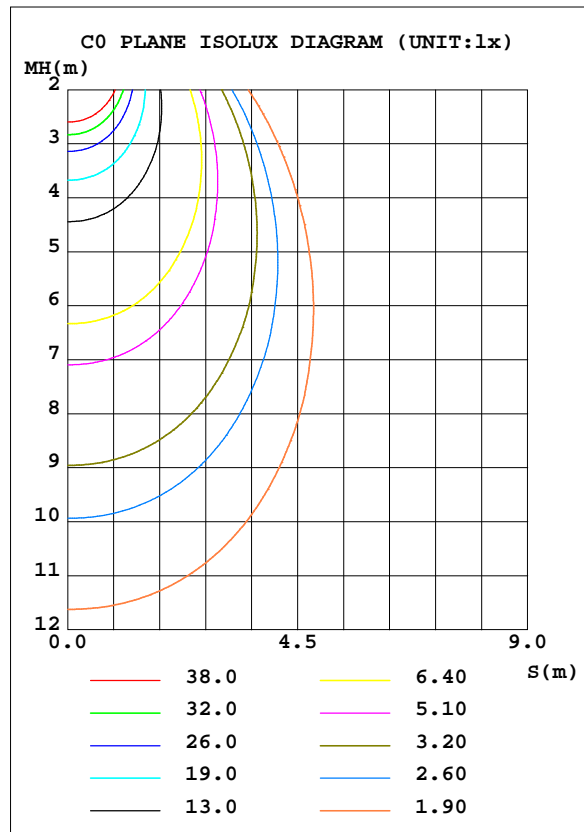
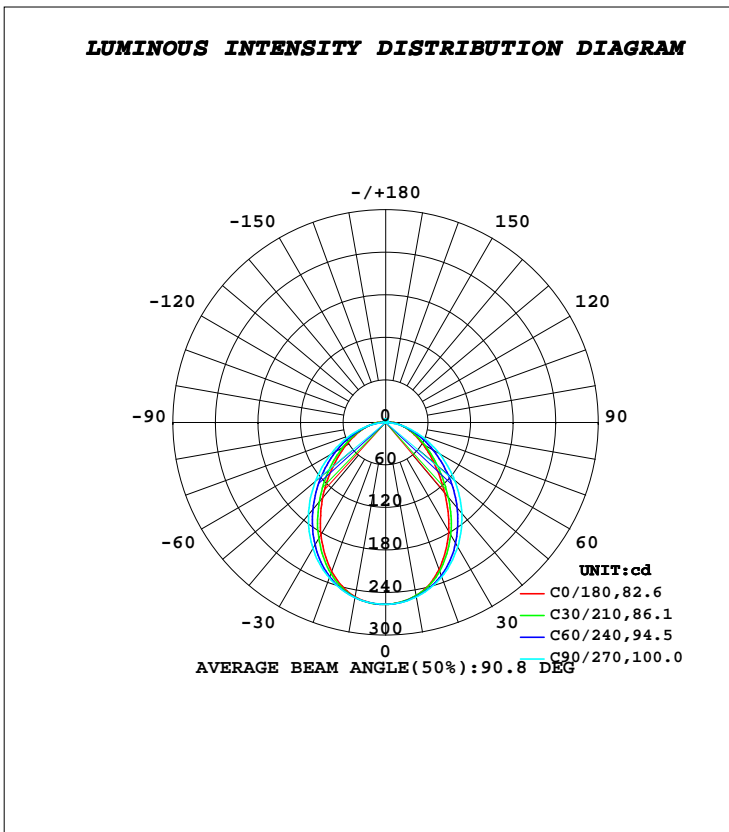




**LUMINAIRE PHOTOMETRIC TEST REPORT**

Test:U:24.000V I:0.3730A P:8.9000W PF:1.0000 Freq:0Hz Lamp Flux:604.167x1 lm		
NAME: 1010-082-935-24	TYPE:LED	
MFR.:		

DATA OF LAMP		PHOTOMETRIC DATA			
MODEL		Imax(cd)	256.6	S/MH(C0/180)	1.09
NOMINAL POWER(W)	8.9	LOR(%)	100.0	S/MH(C90/270)	1.20
RATED VOLTAGE(V)	24	TOTAL FLUX(lm)	604.17	η UP, DN(C0-180)	1.7,48.7
NOMINAL FLUX(lm)	604.167	CIE CLASS	DIRECT	η UP, DN(C180-360)	1.8,47.9
LAMPS INSIDE	1	η up(%)	3.5	CIBSE SHR NOM	1.25
TEST VOLTAGE(V)	24	η down(%)	96.5	CIBSE SHR MAX	1.25



**C Range: 0 - 360DEG**  
**C Interval: 30.0DEG**  
**Test Speed: HIGH**  
**Temperature:25.3DEG**  
**Operators:DAMIN**  
**Test Date:2019-05-30**

**γ Range: 0 - 180DEG**  
**γ Interval: 1.0DEG**  
**Test System:EVERFINE GO-2000B\_V1 SYSTEM V2.0.406.11**  
**Humidity:65.0%**  
**Test Distance:8.000m [K=0.7063]**  
**Remarks:**

**ZONAL FLUX DIAGRAM**

**ZONAL FLUX DIAGRAM:**

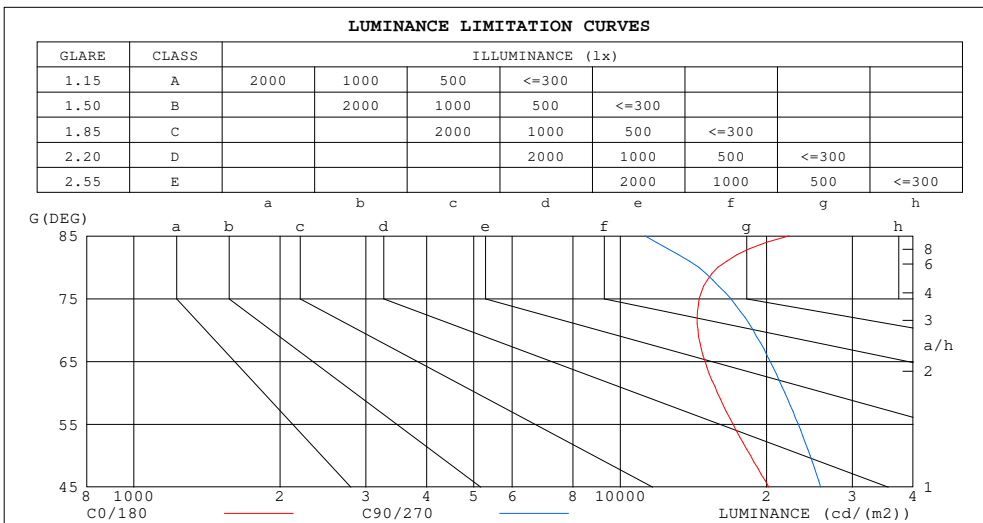
$\gamma$	C0	C45	C90	C135	C180	C225	C270	C315	$\gamma$	$\Phi$ zone	$\Phi$ total	%lum,lamp
10	249.5	250.6	250.9	249.0	247.8	248.5	249.8	249.8	0- 10	24.16	24.16	4,4
20	223.3	229.1	233.2	227.4	220.4	226.4	231.6	227.8	10- 20	67.65	91.81	15.2,15.2
30	183.1	194.1	205.3	191.6	177.9	190.4	203.1	192.5	20- 30	96.99	188.8	31.2,31.2
40	138.4	152.7	169.6	148.7	129.4	147.1	167.0	151.0	30- 40	107.2	296.0	49,49
50	97.65	111.8	129.7	106.5	89.92	105.6	127.1	110.5	40- 50	99.83	395.8	65.5,65.5
60	64.95	75.31	89.50	71.03	60.06	70.26	87.11	74.38	50- 60	81.28	477.1	79,79
70	40.53	45.11	52.64	42.74	38.06	42.39	50.88	44.64	60- 70	57.84	534.9	88.5,88.5
80	22.62	21.77	20.66	20.91	21.74	20.81	19.27	21.53	70- 80	33.95	568.9	94.2,94.2
90	10.59	7.509	1.346	7.427	10.64	7.519	1.635	7.464	80- 90	14.33	588.2	96.5,96.5
100	3.815	2.298	1.627	2.408	4.353	2.633	1.916	2.308	90-100	4.731	588.0	97.3,97.3
110	1.940	1.993	2.107	2.066	2.242	2.290	2.330	2.191	100-110	2.286	590.2	97.7,97.7
120	2.414	2.473	2.618	2.594	2.666	2.771	2.806	2.640	110-120	2.354	592.6	98.1,98.1
130	3.010	3.021	3.160	3.184	3.158	3.282	3.285	3.115	120-130	2.583	595.2	98.5,98.5
140	3.608	3.570	3.703	3.767	3.667	3.797	3.763	3.596	130-140	2.642	597.8	98.9,98.9
150	4.139	4.077	4.209	4.280	4.138	4.266	4.227	4.053	140-150	2.463	600.3	99.4,99.4
160	4.619	4.563	4.695	4.731	4.595	4.685	4.677	4.513	150-160	2.033	602.3	99.7,99.7
170	4.994	4.986	5.079	5.073	4.963	5.023	5.047	4.933	160-170	1.363	603.7	99.9,99.9
180	5.146	5.180	5.241	5.189	5.144	5.180	5.246	5.186	170-180	0.4864	604.2	100,100
DEG	LUMINOUS INTENSITY:cd									UNIT:lm		

**C Range: 0 - 360DEG**  
**C Interval: 30.0DEG**  
**Test Speed: HIGH**  
**Temperature:25.3DEG**  
**Operators:DAMIN**  
**Test Date:2019-05-30**

**$\gamma$  Range: 0 - 180DEG**  
 **$\gamma$  Interval: 1.0DEG**  
**Test System:EVERFINE GO-2000B\_V1 SYSTEM V2.0.406.11**  
**Humidity:65.0%**  
**Test Distance:8.000m [K=0.7063]**  
**Remarks:**

**LUMINANCE LIMITATION CURVES**

Test:U:24.000V I:0.3730A P:8.9000W PF:1.0000 Freq:0Hz Lamp Flux:604.167x1 lm		
NAME: 1010-082-935-24	TYPE:LED	
MFR.:		



LUMINANCE cd/(m2)		
G (DEG)	C0/180	C90/270
85	22240	11252
80	15886	14501
75	14532	16877
70	14453	18756
65	14950	20326
60	15842	21813
55	17060	23228
50	18528	24585
45	20215	25842

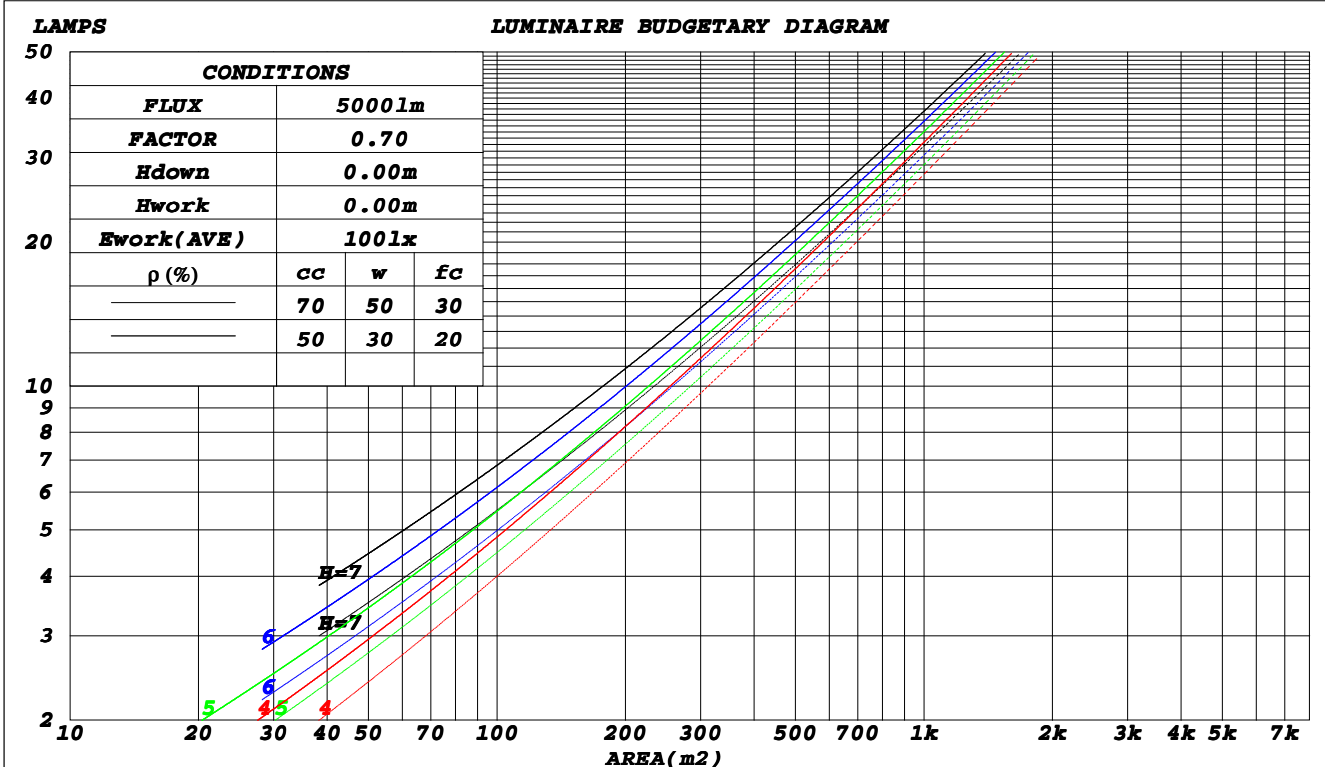
**C Range: 0 - 360DEG**  
**C Interval: 30.0DEG**  
**Test Speed: HIGH**  
**Temperature: 25.3DEG**  
**Operators: DAMIN**  
**Test Date: 2019-05-30**

**γ Range: 0 - 180DEG**  
**γ Interval: 1.0DEG**  
**Test System: EVERFINE GO-2000B\_V1 SYSTEM V2.0.406.11**  
**Humidity: 65.0%**  
**Test Distance: 8.000m [K=0.7063]**  
**Remarks:**

CU AND LUMINAIRE BUDGETARY ESTIMATE DIAGRAM

Test:U:24.000V I:0.3730A P:8.9000W PF:1.0000 Freq:0Hz Lamp Flux:604.167x1 lm		
NAME: 1010-082-935-24	TYPE:LED	
MFR.:		

ρcc	80%			70%			50%			30%			10%			0
	50%	30%	10%	50%	30%	10%	50%	30%	10%	50%	30%	10%	50%	30%	10%	0
ρw	0															
ρfc	0															
RCR	RCR:Room Cavity Ratio															
	Coefficients of Utilization(CU)															
0.0	1.18	1.18	1.18	1.15	1.15	1.15	1.09	1.09	1.09	1.04	1.04	1.04	.99	.99	.99	.97
1.0	1.04	.00	.96	1.01	.97	.94	.96	.93	.90	.92	.89	.87	.88	.86	.84	.82
2.0	.91	.85	.79	.89	.83	.78	.85	.80	.76	.81	.77	.73	.78	.74	.71	.69
3.0	.81	.73	.67	.79	.72	.66	.76	.69	.64	.72	.67	.63	.69	.65	.61	.59
4.0	.72	.64	.57	.71	.63	.57	.68	.61	.56	.65	.59	.55	.62	.58	.53	.51
5.0	.65	.56	.50	.64	.56	.50	.61	.54	.49	.59	.53	.48	.57	.51	.47	.45
6.0	.59	.50	.44	.58	.50	.44	.56	.48	.43	.54	.47	.42	.52	.46	.42	.40
7.0	.54	.45	.39	.53	.45	.39	.51	.44	.38	.49	.43	.38	.47	.42	.37	.35
8.0	.49	.41	.35	.48	.40	.35	.47	.40	.35	.45	.39	.34	.44	.38	.34	.32
9.0	.45	.37	.32	.45	.37	.32	.43	.36	.31	.42	.36	.31	.41	.35	.31	.29
10.0	.42	.34	.29	.41	.34	.29	.40	.33	.29	.39	.33	.28	.38	.32	.28	.26



C Range: 0 - 360DEG  
 C Interval: 30.0DEG  
 Test Speed: HIGH  
 Temperature: 25.3DEG  
 Operators: DAMIN  
 Test Date: 2019-05-30

γ Range: 0 - 180DEG  
 γ Interval: 1.0DEG  
 Test System: EVERFINE GO-2000B\_V1 SYSTEM V2.0.406.11  
 Humidity: 65.0%  
 Test Distance: 8.000m [K=0.7063]  
 Remarks:

**WEC AND CCEC**

Test:U:24.000V I:0.3730A P:8.9000W PF:1.0000 Freq:0Hz Lamp Flux:604.167x1 lm		
NAME: 1010-082-935-24	TYPE:LED	
MFR.:		

$\rho_{cc}$	80%			70%			50%			30%			10%			0
$\rho_w$	50%	30%	10%	50%	30%	10%	50%	30%	10%	50%	30%	10%	50%	30%	10%	0
$\rho_{fc}$	20%			20%			20%			20%			20%			0
<b>RCR</b>	<b>RCR:Room Cavity Ratio</b>						<b>Wall Exitance Coefficients(WEC)</b>									
0.0																
1.0	.297	.169	.053	.289	.165	.052	.273	.157	.050	.260	.150	.048	.247	.143	.046	
2.0	.276	.151	.046	.269	.148	.046	.256	.142	.044	.243	.137	.043	.232	.131	.041	
3.0	.255	.136	.041	.249	.133	.040	.237	.129	.039	.226	.124	.038	.216	.120	.037	
4.0	.236	.123	.036	.230	.121	.036	.220	.117	.035	.210	.113	.034	.201	.109	.033	
5.0	.219	.112	.032	.214	.110	.032	.204	.106	.031	.196	.103	.031	.187	.100	.030	
6.0	.203	.102	.029	.199	.101	.029	.191	.098	.028	.183	.095	.028	.175	.092	.027	
7.0	.190	.094	.027	.186	.093	.026	.178	.090	.026	.171	.088	.026	.164	.085	.025	
8.0	.178	.087	.024	.174	.086	.024	.167	.084	.024	.161	.081	.024	.155	.079	.023	
9.0	.167	.081	.023	.164	.080	.022	.158	.078	.022	.152	.076	.022	.146	.074	.021	
10.0	.157	.075	.021	.154	.075	.021	.149	.073	.021	.143	.071	.020	.138	.070	.020	

$\rho_{cc}$	80%			70%			50%			30%			10%			0
$\rho_w$	50%	30%	10%	50%	30%	10%	50%	30%	10%	50%	30%	10%	50%	30%	10%	0
$\rho_{fc}$	20%			20%			20%			20%			20%			0
<b>RCR</b>	<b>RCR:Room Cavity Ratio</b>						<b>Ceiling Cavity Exitance Coefficients(CCEC)</b>									
0.0																
1.0	.217	.217	.217	.185	.185	.185	.127	.127	.127	.073	.073	.073	.023	.023	.023	
2.0	.197	.159	.127	.169	.137	.110	.116	.095	.076	.067	.055	.045	.021	.018	.015	
3.0	.189	.141	.103	.162	.122	.090	.111	.085	.063	.064	.049	.037	.021	.016	.012	
4.0	.181	.128	.087	.155	.110	.076	.107	.077	.053	.062	.045	.032	.020	.015	.010	
5.0	.173	.117	.076	.149	.101	.066	.102	.071	.047	.059	.042	.028	.019	.014	.009	
6.0	.166	.109	.068	.143	.094	.059	.098	.066	.042	.057	.039	.025	.018	.013	.008	
7.0	.159	.102	.062	.137	.088	.054	.095	.062	.038	.055	.037	.023	.018	.012	.008	
8.0	.153	.096	.057	.132	.083	.050	.091	.059	.035	.053	.035	.021	.017	.011	.007	
9.0	.147	.091	.053	.127	.079	.047	.088	.056	.033	.051	.033	.020	.017	.011	.007	
10.0	.142	.087	.051	.122	.076	.044	.085	.053	.031	.049	.031	.019	.016	.010	.006	

C Range: 0 - 360DEG  
 C Interval: 30.0DEG  
 Test Speed: HIGH  
 Temperature:25.3DEG  
 Operators:DAMIN  
 Test Date:2019-05-30

$\gamma$  Range: 0 - 180DEG  
 $\gamma$  Interval: 1.0DEG  
 Test System:EVERFINE GO-2000B\_V1 SYSTEM V2.0.406.11  
 Humidity:65.0%  
 Test Distance:8.000m [K=0.7063]  
 Remarks:

**UGR(Unified Glare Rating) Table**

Test:U:24.000V I:0.3730A P:8.9000W PF:1.0000 Freq:0Hz Lamp Flux:604.167x1 lm		
NAME: 1010-082-935-24	TYPE:LED	
MFR.:		

ceiling/cavity	0.7	0.7	0.5	0.5	0.3	0.7	0.7	0.5	0.5	0.3
walls	0.5	0.3	0.5	0.3	0.3	0.5	0.3	0.5	0.3	0.3
working plane	0.2	0.2	0.2	0.2	0.2	0.2	0.2	0.2	0.2	0.2
Room dimensions	Viewed crosswise					Viewed endwise				
<b>x = 2H y = 2H</b>	<b>22.1</b>	<b>23.5</b>	<b>22.4</b>	<b>23.7</b>	<b>24.0</b>	<b>23.4</b>	<b>24.8</b>	<b>23.7</b>	<b>25.0</b>	<b>25.3</b>
3H	23.3	24.6	23.7	24.9	25.2	24.7	26.0	25.1	26.3	26.6
4H	23.9	25.2	24.3	25.5	25.8	25.2	26.5	25.6	26.8	27.1
6H	24.5	25.7	24.9	26.0	26.3	25.6	26.8	26.0	27.1	27.4
8H	24.8	25.9	25.2	26.2	26.6	25.7	26.8	26.1	27.2	27.5
12H	25.1	26.2	25.5	26.5	26.9	25.8	26.8	26.2	27.2	27.5
<b>4H 2H</b>	<b>22.7</b>	<b>23.9</b>	<b>23.1</b>	<b>24.2</b>	<b>24.6</b>	<b>23.7</b>	<b>25.0</b>	<b>24.1</b>	<b>25.3</b>	<b>25.6</b>
3H	24.2	25.2	24.6	25.6	26.0	25.3	26.3	25.7	26.7	27.1
4H	24.9	25.9	25.3	26.2	26.6	25.9	26.9	26.4	27.3	27.7
6H	25.6	26.5	26.1	26.9	27.3	26.4	27.3	26.9	27.7	28.1
8H	26.0	26.8	26.4	27.2	27.7	26.6	27.4	27.1	27.8	28.3
12H	26.4	27.1	26.9	27.6	28.0	26.7	27.4	27.2	27.9	28.4
<b>8H 4H</b>	<b>25.2</b>	<b>26.0</b>	<b>25.7</b>	<b>26.4</b>	<b>26.9</b>	<b>26.1</b>	<b>26.9</b>	<b>26.6</b>	<b>27.3</b>	<b>27.8</b>
6H	26.1	26.8	26.6	27.3	27.8	26.8	27.4	27.3	27.9	28.4
8H	26.6	27.2	27.1	27.7	28.2	27.0	27.6	27.5	28.1	28.6
12H	27.2	27.7	27.7	28.2	28.8	27.2	27.7	27.7	28.2	28.8
<b>12H 4H</b>	<b>25.2</b>	<b>26.0</b>	<b>25.7</b>	<b>26.4</b>	<b>26.9</b>	<b>26.1</b>	<b>26.9</b>	<b>26.6</b>	<b>27.3</b>	<b>27.8</b>
6H	26.2	26.8	26.7	27.3	27.8	26.8	27.4	27.3	27.9	28.4
8H	26.8	27.3	27.3	27.8	28.3	27.1	27.7	27.7	28.2	28.7
<b>Variations with the observer position at spacings:</b>										
<b>S = 1.0H</b>	<b>+ 0.2 / - 0.3</b>					<b>+ 0.2 / - 0.2</b>				
<b>1.5H</b>	<b>+ 0.1 / - 0.3</b>					<b>+ 0.1 / - 0.2</b>				
<b>2.0H</b>	<b>+ 0.2 / - 0.3</b>					<b>+ 0.4 / - 0.4</b>				

CIE Pub.117, 604.2 lm Total Lamp Luminous Flux Corrected (8log(F/F0) = -1.8)

C Range: 0 - 360DEG  
 C Interval: 30.0DEG  
 Test Speed: HIGH  
 Temperature:25.3DEG  
 Operators:DAMIN  
 Test Date:2019-05-30

γ Range: 0 - 180DEG  
 γ Interval: 1.0DEG  
 Test System:EVERFINE GO-2000B\_V1 SYSTEM V2.0.406.11  
 Humidity:65.0%  
 Test Distance:8.000m [K=0.7063]  
 Remarks:

**UTILIZATION FACTORS TABLE**

Test:U:24.000V I:0.3730A P:8.9000W PF:1.0000 Freq:0Hz Lamp Flux:604.167x1 lm		
NAME: 1010-082-935-24	TYPE:LED	
MFR.:		

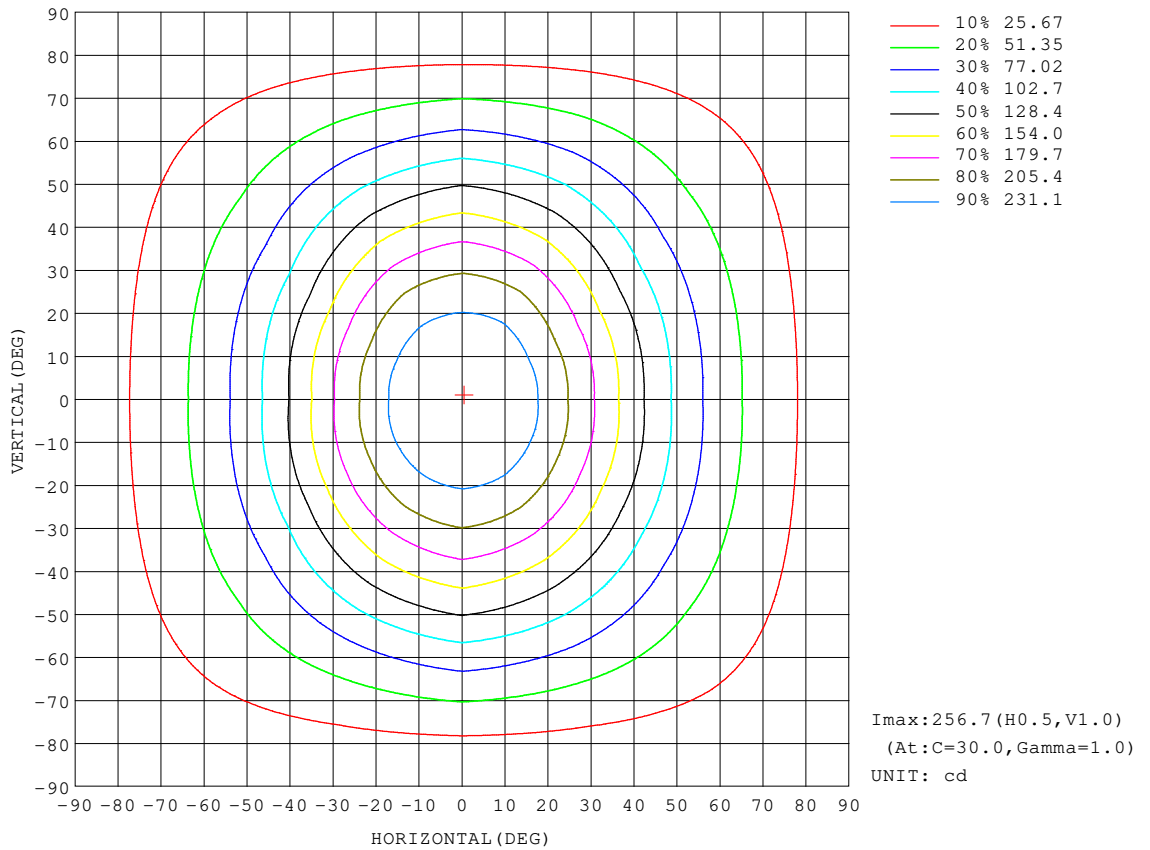
REFLECTANCE										
<b>Ceiling</b>	0.8	0.8	0.8	0.7	0.7	0.7	0.5	0.5	0.5	0
<b>Walls</b>	0.7	0.5	0.3	0.7	0.5	0.3	0.7	0.5	0.3	0
<b>Working plane</b>	0.2	0.2	0.2	0.2	0.2	0.2	0.2	0.2	0.2	0
<b>ROOM INDEX</b>	<b>UTILIZATION FACTORS(PERCENT) <math>k(RI) \times RCR = 5</math></b>									
<b>k = 0.60</b>	60	49	42	59	49	42	58	48	42	36
<b>0.80</b>	70	59	52	69	58	52	67	57	51	44
<b>1.00</b>	78	67	60	76	67	60	74	67	59	52
<b>1.25</b>	84	75	68	83	74	67	80	72	66	59
<b>1.50</b>	89	80	73	87	79	73	84	77	71	64
<b>2.00</b>	95	87	81	93	86	80	90	83	78	70
<b>2.50</b>	99	92	86	97	90	85	93	87	83	74
<b>3.00</b>	102	96	90	100	94	89	95	90	86	77
<b>4.00</b>	106	100	96	103	98	94	99	95	91	81
<b>5.00</b>	108	103	99	105	101	98	100	97	94	84
<b>ROOM INDEX</b>	<b>UF(total)</b>									<b>Direct</b>
<b>According to DIN EN 13032-2 2004</b>			<b>Suspended</b>					<b>SHRNOM = 1.25</b>		

**C Range: 0 - 360DEG**  
**C Interval: 30.0DEG**  
**Test Speed: HIGH**  
**Temperature:25.3DEG**  
**Operators:DAMIN**  
**Test Date:2019-05-30**

**$\gamma$  Range: 0 - 180DEG**  
 **$\gamma$  Interval: 1.0DEG**  
**Test System:EVERFINE GO-2000B\_V1 SYSTEM V2.0.406.11**  
**Humidity:65.0%**  
**Test Distance:8.000m [K=0.7063]**  
**Remarks:**

**ISOCANDELA DIAGRAM**

Test:U:24.000V I:0.3730A P:8.9000W PF:1.0000 Freq:0Hz Lamp Flux:604.167x1 lm		
NAME: 1010-082-935-24	TYPE:LED	
MFR.:		



**C Range: 0 - 360DEG**  
**C Interval: 30.0DEG**  
**Test Speed: HIGH**  
**Temperature: 25.3DEG**  
**Operators: DAMIN**  
**Test Date: 2019-05-30**

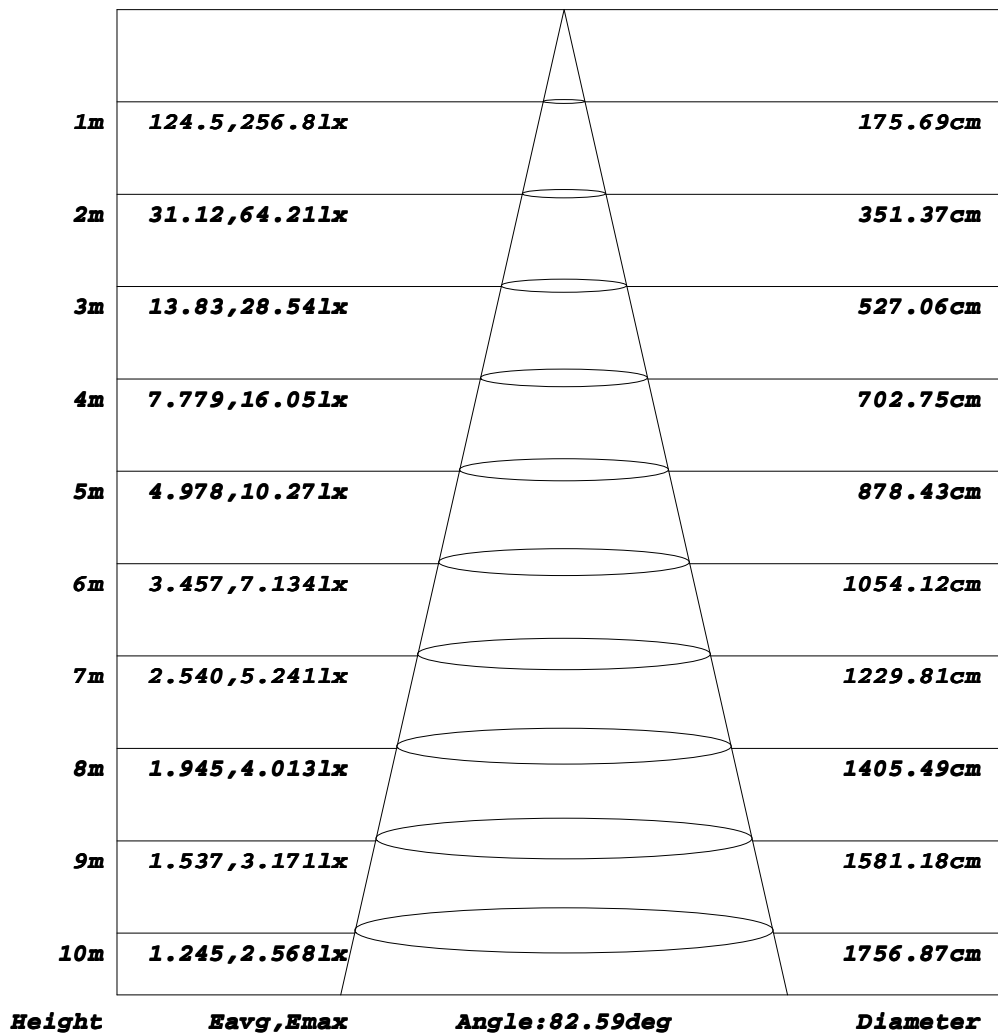
**γ Range: 0 - 180DEG**  
**γ Interval: 1.0DEG**  
**Test System: EVERFINE GO-2000B\_V1 SYSTEM V2.0.406.11**  
**Humidity: 65.0%**  
**Test Distance: 8.000m [K=0.7063]**  
**Remarks:**



**AAI Figure**

Test:U:24.000V I:0.3730A P:8.9000W PF:1.0000 Freq:0Hz Lamp Flux:604.167x1 lm		
NAME: 1010-082-935-24	TYPE:LED	
MFR.:		

Flux out:317.0 lm



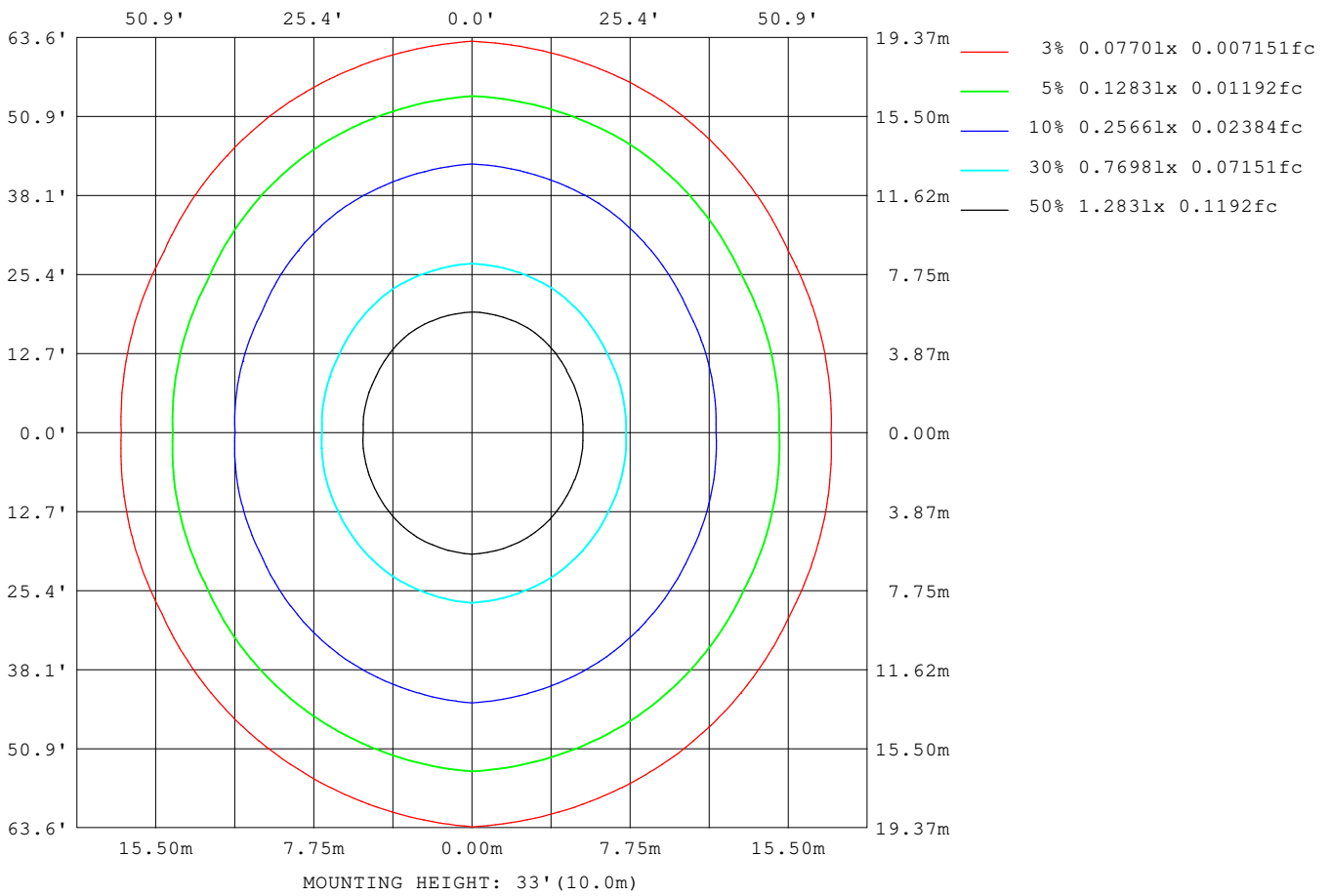
Note: The Curves indicate the illuminated area and the average illumination when the luminaire is at different distance.

C Range: 0 - 360DEG  
 C Interval: 30.0DEG  
 Test Speed: HIGH  
 Temperature: 25.3DEG  
 Operators: DAMIN  
 Test Date: 2019-05-30

γ Range: 0 - 180DEG  
 γ Interval: 1.0DEG  
 Test System: EVERFINE GO-2000B\_V1 SYSTEM V2.0.406.11  
 Humidity: 65.0%  
 Test Distance: 8.000m [K=0.7063]  
 Remarks:

**ISOLUX DIAGRAM**

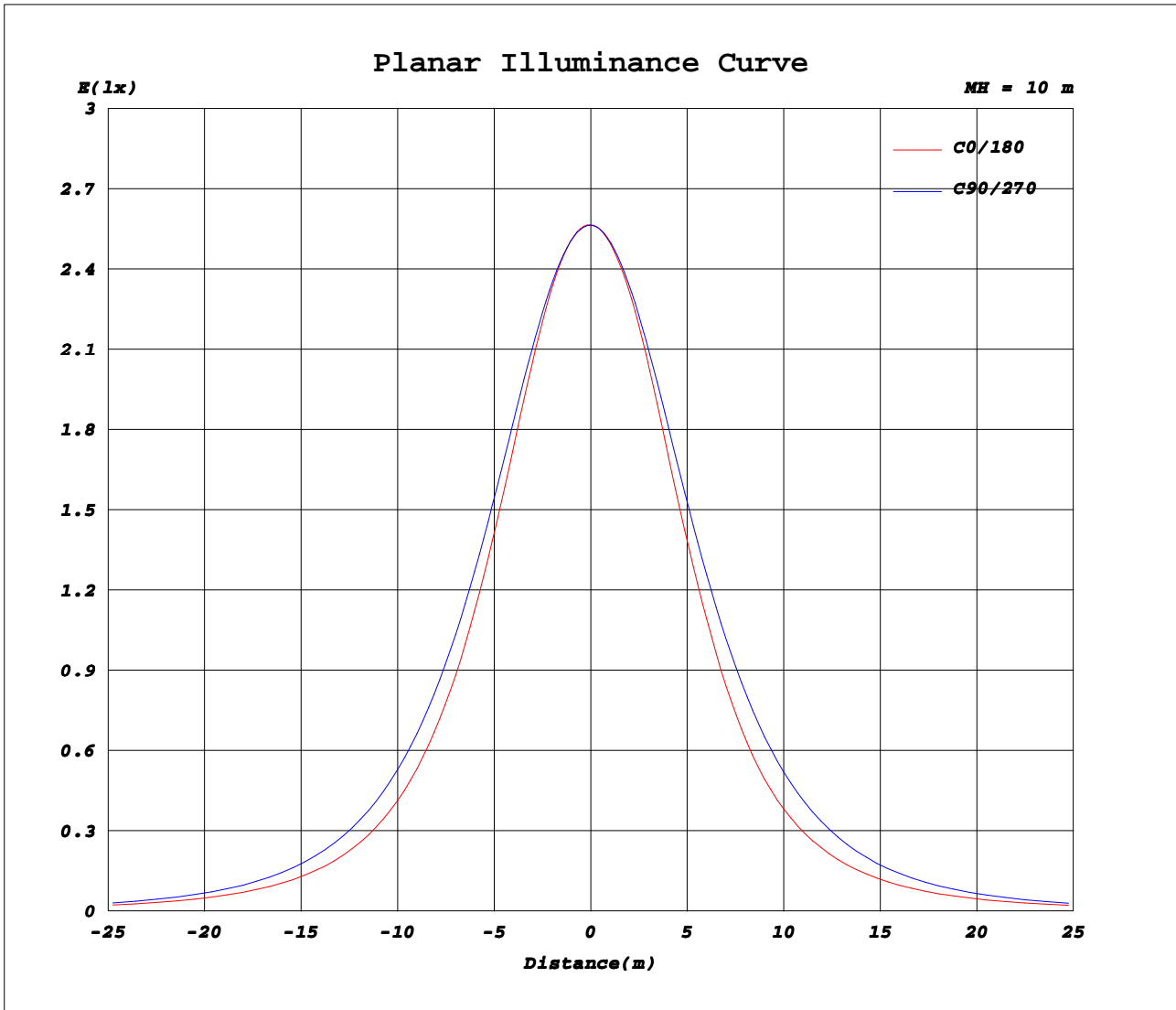
Test:U:24.000V I:0.3730A P:8.9000W PF:1.0000 Freq:0Hz Lamp Flux:604.167x1 lm		
NAME: 1010-082-935-24	TYPE:LED	
MFR.:		



**C Range: 0 - 360DEG**  
**C Interval: 30.0DEG**  
**Test Speed: HIGH**  
**Temperature: 25.3DEG**  
**Operators: DAMIN**  
**Test Date: 2019-05-30**

**γ Range: 0 - 180DEG**  
**γ Interval: 1.0DEG**  
**Test System: EVERFINE GO-2000B\_V1 SYSTEM V2.0.406.11**  
**Humidity: 65.0%**  
**Test Distance: 8.000m [K=0.7063]**  
**Remarks:**

**Planar Illuminance Curve**



**C Range: 0 - 360DEG**  
**C Interval: 30.0DEG**  
**Test Speed: HIGH**  
**Temperature: 25.3DEG**  
**Operators: DAMIN**  
**Test Date: 2019-05-30**

**γ Range: 0 - 180DEG**  
**γ Interval: 1.0DEG**  
**Test System: EVERFINE GO-2000B\_V1 SYSTEM V2.0.406.11**  
**Humidity: 65.0%**  
**Test Distance: 8.000m [K=0.7063]**  
**Remarks:**

**LUMINOUS DISTRIBUTION INTENSITY DATA**

Test:U:24.000V I:0.3730A P:8.9000W PF:1.0000 Freq:0Hz Lamp Flux:604.167x1 lm		
NAME: 1010-082-935-24	TYPE:LED	
MFR.:		

Table--1

UNIT: cd

C (DEG) \ γ (DEG)	0	30	60	90	120	150	180	210	240	270	300	330							
0	257	257	257	257	257	257	257	257	257	257	257	257							
5	255	256	255	255	255	254	254	254	255	255	255	255							
10	250	250	251	251	249	249	248	248	249	250	250	249							
15	239	241	243	244	241	239	237	238	241	242	242	239							
20	223	227	232	233	230	225	220	223	230	232	231	225							
25	204	209	217	220	215	206	200	204	215	218	216	207							
30	183	189	199	205	198	186	178	183	197	203	199	186							
35	160	168	180	188	178	164	154	161	177	186	179	165							
40	138	146	160	170	157	140	129	137	157	167	159	143							
45	117	125	139	150	137	117	108	115	136	147	138	122							
50	97.6	105	119	130	116	97.3	89.9	95.6	116	127	119	102							
55	80.2	86.3	99.4	109	95.6	79.9	73.7	78.5	95.1	107	98.7	84.4							
60	64.9	69.8	80.8	89.5	77.2	64.9	60.1	63.7	76.8	87.1	80.4	68.4							
65	51.8	55.3	63.5	70.5	60.4	51.7	48.3	50.9	60.3	68.6	63.2	54.3							
70	40.5	42.7	47.5	52.6	45.3	40.2	38.1	39.4	45.3	50.9	47.4	41.9							
75	30.8	31.9	33.1	35.8	31.7	30.2	29.3	29.6	31.8	34.2	33.2	31.1							
80	22.6	22.8	20.8	20.7	20.1	21.7	21.7	21.3	20.3	19.3	20.9	22.1							
85	15.9	15.2	11.5	8.05	11.3	14.7	15.6	14.5	11.4	7.28	11.6	14.8							
90	10.6	9.55	5.47	1.35	5.50	9.35	10.6	9.32	5.72	1.64	5.65	9.28							
95	6.58	5.53	2.42	1.42	2.55	5.59	6.96	5.69	2.79	1.74	2.63	5.40							
100	3.81	2.99	1.60	1.63	1.65	3.16	4.35	3.35	1.92	1.92	1.86	2.76							
105	2.16	1.79	1.81	1.86	1.85	1.96	2.66	2.18	2.09	2.11	2.03	1.98							
110	1.94	1.95	2.04	2.11	2.10	2.03	2.24	2.27	2.31	2.33	2.23	2.15							
115	2.16	2.18	2.27	2.36	2.36	2.28	2.44	2.49	2.55	2.56	2.46	2.36							
120	2.41	2.42	2.52	2.62	2.64	2.55	2.67	2.74	2.81	2.81	2.69	2.59							
125	2.70	2.69	2.79	2.89	2.92	2.85	2.91	3.00	3.06	3.05	2.92	2.83							
130	3.01	2.98	3.06	3.16	3.22	3.15	3.16	3.25	3.31	3.28	3.15	3.08							
135	3.31	3.27	3.32	3.43	3.50	3.45	3.42	3.52	3.57	3.53	3.38	3.33							
140	3.61	3.56	3.58	3.70	3.78	3.75	3.67	3.78	3.82	3.76	3.62	3.58							
145	3.88	3.82	3.84	3.96	4.05	4.02	3.90	4.02	4.06	4.00	3.85	3.81							
150	4.14	4.07	4.09	4.21	4.29	4.27	4.14	4.24	4.29	4.23	4.08	4.03							
155	4.39	4.31	4.34	4.46	4.52	4.51	4.38	4.46	4.51	4.46	4.32	4.25							
160	4.62	4.54	4.58	4.70	4.74	4.72	4.59	4.66	4.71	4.68	4.55	4.48							
165	4.82	4.76	4.82	4.91	4.94	4.91	4.79	4.84	4.89	4.87	4.76	4.69							
170	4.99	4.96	5.02	5.08	5.09	5.05	4.96	5.00	5.05	5.05	4.97	4.89							
175	5.11	5.10	5.16	5.21	5.21	5.16	5.08	5.10	5.17	5.18	5.13	5.05							
180	5.15	5.15	5.21	5.24	5.23	5.15	5.14	5.15	5.21	5.25	5.22	5.15							

**C Range: 0 - 360DEG**  
**C Interval: 30.0DEG**  
**Test Speed: HIGH**  
**Temperature: 25.3DEG**  
**Operators: DAMIN**  
**Test Date: 2019-05-30**

**γ Range: 0 - 180DEG**  
**γ Interval: 1.0DEG**  
**Test System: EVERFINE GO-2000B\_V1 SYSTEM V2.0.406.11**  
**Humidity: 65.0%**  
**Test Distance: 8.000m [K=0.7063]**  
**Remarks:**