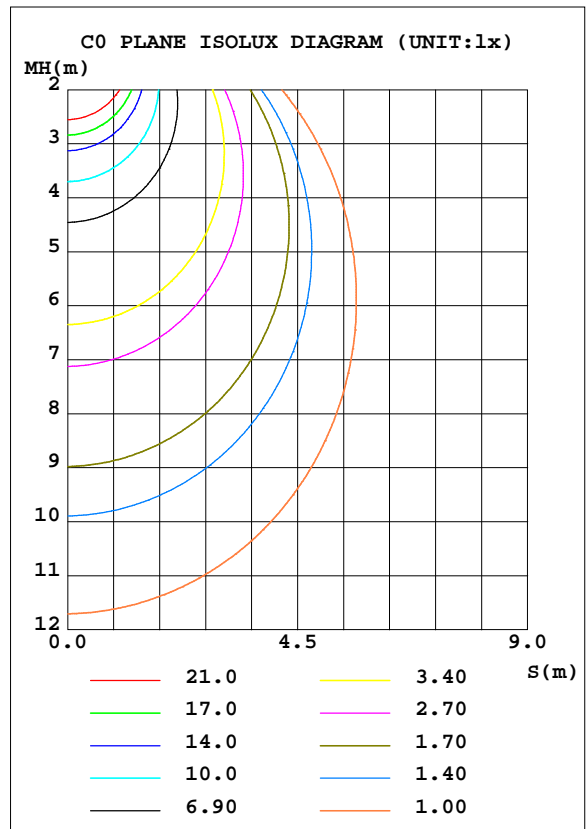
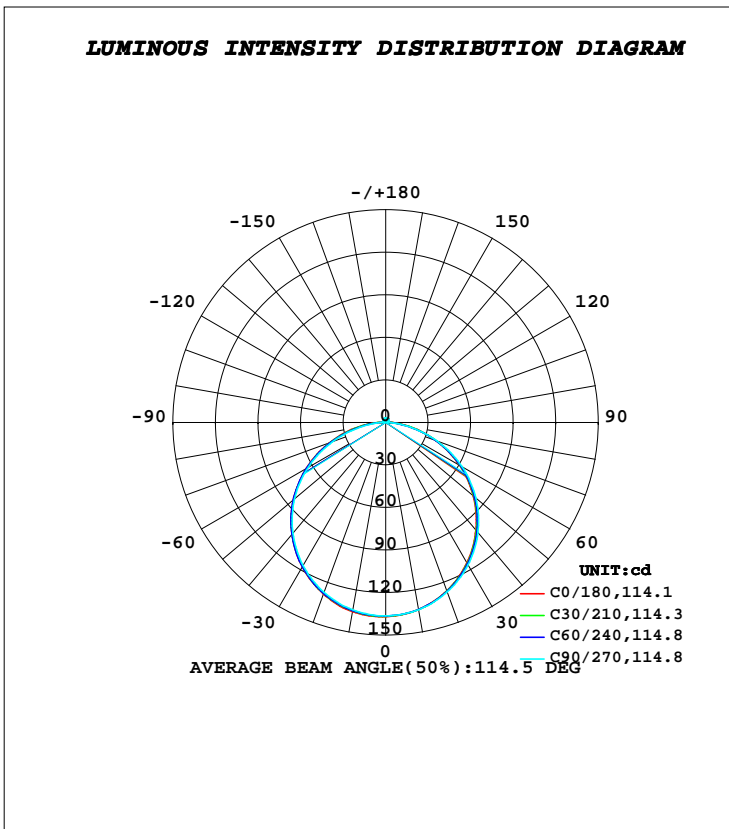


LUMINAIRE PHOTOMETRIC TEST REPORT

Test:U:24.000V I:0.4210A P:10.104W PF:1.0000 Freq:50.00Hz Lamp Flux:415.277x1 lm		
NAME: 1414-DKB120.96.3K	TYPE:LED	
MFR.: Lightrail		

DATA OF LAMP		PHOTOMETRIC DATA Eff: 41.10 lm/W			
MODEL		I _{max} (cd)	137.1	S/MH(C0/180)	1.24
NOMINAL POWER(W)	10	LOR(%)	100.0	S/MH(C90/270)	1.27
RATED VOLTAGE(V)	24	TOTAL FLUX(lm)	415.28	η UP, DN(C0-180)	1.6, 47.9
NOMINAL FLUX(lm)	415.277	CIE CLASS	DIRECT	η UP, DN(C180-360)	1.6, 48.9
LAMPS INSIDE	1	η up(%)	3.2	CIBSE SHR NOM	1.25
TEST VOLTAGE(V)	24	η down(%)	96.8	CIBSE SHR MAX	1.35



C Range: 0 - 360DEG
C Interval: 30.0DEG
Test Speed: HIGH
Temperature: 25.3DEG
Operators: DAMIN
Test Date: 2020-08-13

γ Range: 0 - 180DEG
γ Interval: 1.0DEG
Test System: EVERFINE GO-2000B_V1 SYSTEM V2.0.406.11
Humidity: 65.0%
Test Distance: 8.000m [K=0.7063]
Remarks:

ZONAL FLUX DIAGRAM

ZONAL FLUX DIAGRAM:

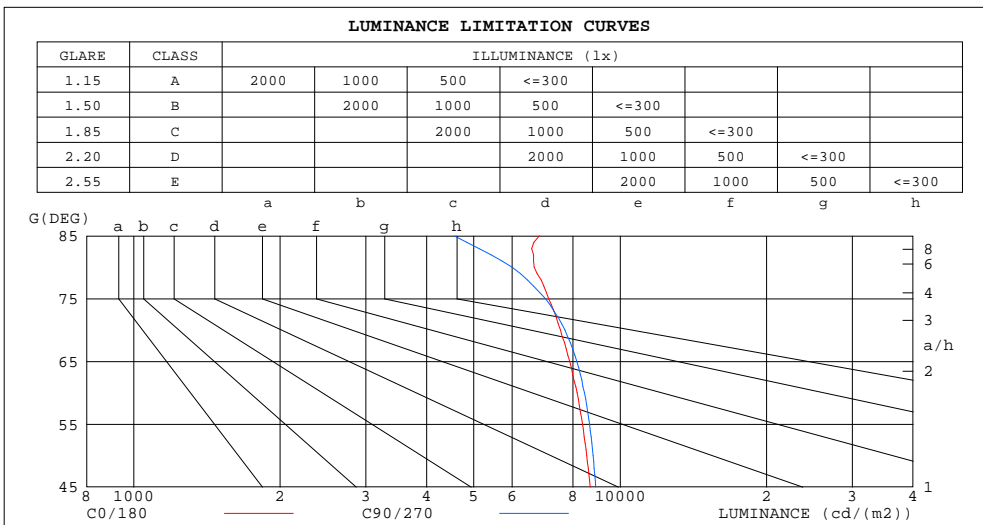
γ	C0	C45	C90	C135	C180	C225	C270	C315	γ	Φ zone	Φ total	%lum,lamp
10	133.9	133.9	134.0	134.6	135.4	134.8	134.1	133.9	0- 10	12.93	12.93	3.11,3.11
20	126.4	126.6	127.1	128.0	128.7	128.3	127.4	126.8	10- 20	37.10	50.03	12,12
30	114.4	115.1	116.1	117.0	117.7	117.5	116.6	115.3	20- 30	56.38	106.4	25.6,25.6
40	99.02	99.87	101.3	102.3	103.0	102.9	101.9	100.3	30- 40	68.32	174.7	42.1,42.1
50	80.64	81.52	83.13	84.22	85.32	85.11	83.93	82.28	40- 50	71.46	246.2	59.3,59.3
60	59.91	60.52	62.03	63.40	64.60	64.29	62.98	61.32	50- 60	65.32	311.5	75,75
70	37.90	37.88	38.72	40.71	42.39	41.69	39.87	38.78	60- 70	50.64	362.1	87.2,87.2
80	17.00	16.03	15.31	18.26	20.81	19.24	16.39	16.97	70- 80	29.99	392.1	94.4,94.4
90	4.069	2.780	1.061	2.525	4.271	3.016	1.361	3.021	80- 90	9.789	401.9	96.8,96.8
100	1.960	1.560	1.324	1.295	1.449	1.453	1.441	1.695	90-100	1.960	403.9	97.3,97.3
110	1.636	1.628	1.620	1.585	1.693	1.704	1.687	1.696	100-110	1.650	405.5	97.7,97.7
120	1.938	1.921	1.921	1.908	1.975	1.983	1.966	1.962	110-120	1.784	407.3	98.1,98.1
130	2.258	2.225	2.230	2.234	2.250	2.269	2.232	2.233	120-130	1.876	409.2	98.5,98.5
140	2.555	2.519	2.535	2.547	2.519	2.542	2.506	2.489	130-140	1.844	411.0	99,99
150	2.837	2.797	2.827	2.833	2.772	2.806	2.787	2.751	140-150	1.670	412.7	99.4,99.4
160	3.096	3.067	3.102	3.094	3.032	3.054	3.048	3.009	150-160	1.353	414.1	99.7,99.7
170	3.259	3.261	3.298	3.282	3.223	3.243	3.255	3.213	160-170	0.8944	415.0	99.9,99.9
180	3.333	3.352	3.389	3.357	3.339	3.360	3.383	3.357	170-180	0.3148	415.3	100,100
DEG	LUMINOUS INTENSITY:cd									UNIT:lm		

C Range: 0 - 360DEG
C Interval: 30.0DEG
Test Speed: HIGH
Temperature:25.3DEG
Operators:DAMIN
Test Date:2020-08-13

γ Range: 0 - 180DEG
 γ Interval: 1.0DEG
Test System:EVERFINE GO-2000B_V1 SYSTEM V2.0.406.11
Humidity:65.0%
Test Distance:8.000m [K=0.7063]
Remarks:

LUMINANCE LIMITATION CURVES

Test:U:24.000V I:0.4210A P:10.104W PF:1.0000 Freq:50.00Hz Lamp Flux:415.277x1 lm		
NAME: 1414-DKB120.96.3K	TYPE:LED	
MFR.: Lightrail		



LUMINANCE cd/(m2)		
G (DEG)	C0/180	C90/270
85	6825	4555
80	6662	5997
75	7132	7020
70	7538	7701
65	7878	8141
60	8151	8439
55	8370	8650
50	8534	8798
45	8676	8907

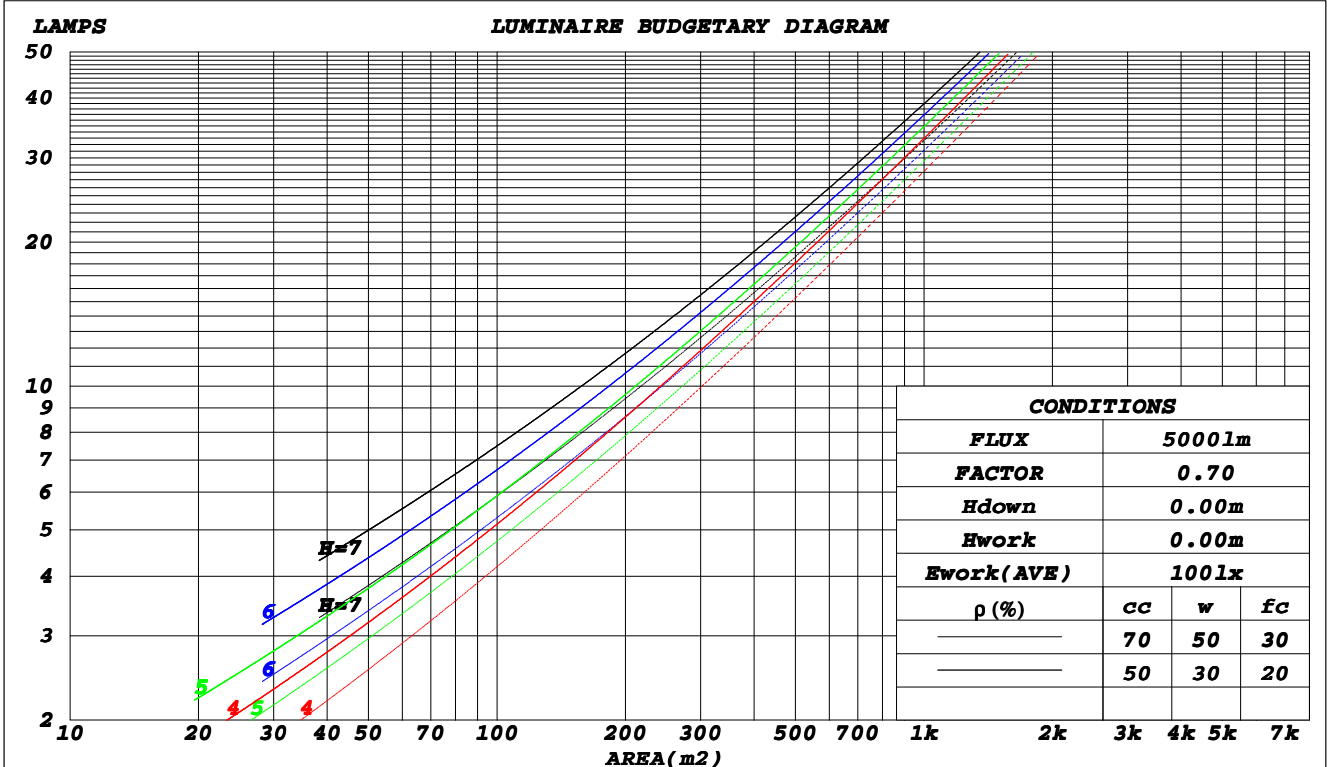
C Range: 0 - 360DEG
C Interval: 30.0DEG
Test Speed: HIGH
Temperature: 25.3DEG
Operators: DAMIN
Test Date: 2020-08-13

γ Range: 0 - 180DEG
γ Interval: 1.0DEG
Test System: EVERFINE GO-2000B_V1 SYSTEM V2.0.406.11
Humidity: 65.0%
Test Distance: 8.000m [K=0.7063]
Remarks:

CU AND LUMINAIRE BUDGETARY ESTIMATE DIAGRAM

Test:U:24.000V I:0.4210A P:10.104W PF:1.0000 Freq:50.00Hz Lamp Flux:415.277x1 lm		
NAME: 1414-DKB120.96.3K	TYPE:LED	
MFR.: Lightrail		

ρ_{cc}	80%			70%			50%			30%			10%			0
ρ_w	50%	30%	10%	50%	30%	10%	50%	30%	10%	50%	30%	10%	50%	30%	10%	0
ρ_{fc}	20%			20%			20%			20%			20%			0
RCR	RCR:Room Cavity Ratio						Coefficients of Utilization(CU)									
0.0	1.18	1.18	1.18	1.15	1.15	1.15	1.09	1.09	1.09	1.04	1.04	1.04	.99	.99	.99	.97
1.0	1.03	.98	.94	1.00	.96	.93	.95	.92	.89	.91	.88	.86	.87	.85	.83	.80
2.0	.89	.82	.76	.87	.81	.75	.83	.78	.73	.79	.75	.71	.76	.72	.69	.66
3.0	.78	.70	.63	.76	.69	.62	.73	.66	.61	.70	.64	.59	.67	.62	.58	.56
4.0	.69	.60	.53	.68	.59	.53	.65	.57	.52	.62	.56	.51	.59	.54	.50	.47
5.0	.62	.53	.46	.60	.52	.45	.58	.50	.45	.56	.49	.44	.53	.48	.43	.41
6.0	.55	.46	.40	.54	.46	.40	.52	.45	.39	.50	.43	.38	.48	.42	.38	.36
7.0	.50	.41	.35	.49	.41	.35	.47	.40	.34	.46	.39	.34	.44	.38	.33	.31
8.0	.46	.37	.31	.45	.37	.31	.43	.36	.31	.42	.35	.30	.40	.34	.30	.28
9.0	.42	.34	.28	.41	.33	.28	.40	.33	.28	.39	.32	.27	.37	.31	.27	.25
10.0	.39	.31	.25	.38	.30	.25	.37	.30	.25	.36	.29	.25	.35	.29	.25	.23



C Range: 0 - 360DEG
 C Interval: 30.0DEG
 Test Speed: HIGH
 Temperature: 25.3DEG
 Operators: DAMIN
 Test Date: 2020-08-13

γ Range: 0 - 180DEG
 γ Interval: 1.0DEG
 Test System: EVERFINE GO-2000B_V1 SYSTEM V2.0.406.11
 Humidity: 65.0%
 Test Distance: 8.000m [K=0.7063]
 Remarks:

WEC AND CCEC

Test:U:24.000V I:0.4210A P:10.104W PF:1.0000 Freq:50.00Hz Lamp Flux:415.277x1 lm		
NAME: 1414-DKB120.96.3K	TYPE:LED	
MFR.: Lightrail		

ρ_{cc}	80%			70%			50%			30%			10%			0
ρ_w	50%	30%	10%	50%	30%	10%	50%	30%	10%	50%	30%	10%	50%	30%	10%	0
ρ_{fc}	20%			20%			20%			20%			20%			0
RCR	RCR:Room Cavity Ratio						Wall Exitance Coefficients(WEC)									
0.0																
1.0	.317	.180	.057	.309	.176	.056	.294	.169	.054	.280	.161	.052	.267	.155	.050	
2.0	.296	.162	.050	.289	.159	.049	.275	.153	.048	.263	.147	.046	.251	.142	.045	
3.0	.273	.145	.043	.266	.143	.043	.254	.138	.042	.243	.133	.041	.233	.129	.040	
4.0	.251	.130	.038	.245	.128	.038	.235	.124	.037	.225	.121	.036	.215	.117	.036	
5.0	.232	.118	.034	.226	.116	.034	.217	.113	.033	.208	.110	.033	.200	.107	.032	
6.0	.214	.107	.031	.210	.106	.031	.201	.103	.030	.193	.100	.030	.186	.098	.029	
7.0	.199	.099	.028	.195	.097	.028	.188	.095	.027	.180	.092	.027	.174	.090	.027	
8.0	.186	.091	.026	.182	.090	.025	.175	.088	.025	.169	.086	.025	.163	.084	.024	
9.0	.174	.084	.024	.171	.083	.023	.165	.081	.023	.159	.080	.023	.153	.078	.022	
10.0	.164	.079	.022	.161	.078	.022	.155	.076	.021	.150	.074	.021	.145	.073	.021	

ρ_{cc}	80%			70%			50%			30%			10%			0
ρ_w	50%	30%	10%	50%	30%	10%	50%	30%	10%	50%	30%	10%	50%	30%	10%	0
ρ_{fc}	20%			20%			20%			20%			20%			0
RCR	RCR:Room Cavity Ratio						Ceiling Cavity Exitance Coefficients(CCEC)									
0.0																
1.0	.215	.215	.215	.184	.184	.184	.125	.125	.125	.072	.072	.072	.023	.023	.023	
2.0	.198	.157	.122	.169	.135	.106	.116	.093	.074	.067	.054	.043	.021	.018	.014	
3.0	.190	.139	.099	.163	.120	.086	.112	.083	.060	.065	.049	.035	.021	.016	.012	
4.0	.182	.126	.083	.156	.109	.072	.108	.076	.051	.062	.044	.030	.020	.014	.010	
5.0	.175	.116	.072	.150	.100	.063	.103	.070	.044	.060	.041	.026	.019	.013	.009	
6.0	.168	.108	.064	.144	.093	.056	.099	.065	.040	.058	.038	.024	.019	.013	.008	
7.0	.161	.101	.058	.138	.087	.051	.096	.061	.036	.056	.036	.021	.018	.012	.007	
8.0	.154	.095	.054	.133	.082	.047	.092	.058	.033	.054	.034	.020	.017	.011	.007	
9.0	.148	.090	.051	.128	.078	.044	.089	.055	.031	.052	.032	.019	.017	.011	.006	
10.0	.143	.086	.048	.123	.074	.042	.085	.052	.030	.050	.031	.018	.016	.010	.006	

C Range: 0 - 360DEG
 C Interval: 30.0DEG
 Test Speed: HIGH
 Temperature:25.3DEG
 Operators:DAMIN
 Test Date:2020-08-13

γ Range: 0 - 180DEG
 γ Interval: 1.0DEG
 Test System:EVERFINE GO-2000B_V1 SYSTEM V2.0.406.11
 Humidity:65.0%
 Test Distance:8.000m [K=0.7063]
 Remarks:

UGR(Unified Glare Rating) Table

Test:U:24.000V I:0.4210A P:10.104W PF:1.0000 Freq:50.00Hz Lamp Flux:415.277x1 lm		
NAME: 1414-DKB120.96.3K	TYPE:LED	
MFR.: Lightrail		

ceiling/cavity	0.7	0.7	0.5	0.5	0.3	0.7	0.7	0.5	0.5	0.3
walls	0.5	0.3	0.5	0.3	0.3	0.5	0.3	0.5	0.3	0.3
working plane	0.2	0.2	0.2	0.2	0.2	0.2	0.2	0.2	0.2	0.2
Room dimensions	Viewed crosswise					Viewed endwise				
x = 2H y = 2H	20.0	21.5	20.3	21.8	22.0	20.1	21.6	20.4	21.9	22.1
3H	21.5	22.9	21.9	23.2	23.5	21.6	23.0	22.0	23.3	23.6
4H	22.2	23.5	22.5	23.8	24.1	22.2	23.5	22.6	23.9	24.2
6H	22.6	23.9	23.0	24.2	24.6	22.6	23.9	23.0	24.2	24.5
8H	22.8	24.0	23.2	24.3	24.7	22.7	23.9	23.1	24.3	24.6
12H	22.9	24.1	23.3	24.4	24.8	22.8	23.9	23.2	24.3	24.6
4H 2H	20.6	21.9	21.0	22.2	22.6	20.7	22.0	21.1	22.3	22.6
3H	22.3	23.5	22.7	23.8	24.2	22.4	23.5	22.8	23.9	24.3
4H	23.1	24.1	23.5	24.5	24.9	23.1	24.2	23.5	24.5	24.9
6H	23.7	24.6	24.1	25.0	25.5	23.6	24.5	24.1	25.0	25.4
8H	23.9	24.8	24.4	25.2	25.7	23.8	24.6	24.2	25.1	25.5
12H	24.1	24.9	24.6	25.3	25.8	23.9	24.7	24.3	25.1	25.6
8H 4H	23.3	24.2	23.8	24.6	25.1	23.4	24.2	23.8	24.7	25.1
6H	24.1	24.8	24.6	25.3	25.8	24.0	24.7	24.5	25.2	25.7
8H	24.4	25.1	24.9	25.6	26.1	24.2	24.9	24.7	25.4	25.9
12H	24.7	25.3	25.2	25.8	26.3	24.4	24.9	24.9	25.4	26.0
12H 4H	23.3	24.1	23.8	24.6	25.1	23.4	24.2	23.9	24.6	25.1
6H	24.2	24.8	24.7	25.3	25.8	24.1	24.7	24.6	25.2	25.7
8H	24.5	25.1	25.1	25.6	26.1	24.3	24.9	24.9	25.4	25.9
Variations with the observer position at spacings:										
S = 1.0H	+ 0.1 / - 0.2					+ 0.1 / - 0.2				
1.5H	+ 0.2 / - 0.3					+ 0.2 / - 0.3				
2.0H	+ 0.1 / - 0.3					+ 0.2 / - 0.3				

CIE Pub.117, 415.3 lm Total Lamp Luminous Flux Corrected (8log(F/F0) = -3.1)

C Range: 0 - 360DEG
C Interval: 30.0DEG
Test Speed: HIGH
Temperature:25.3DEG
Operators:DAMIN
Test Date:2020-08-13

γ Range: 0 - 180DEG
γ Interval: 1.0DEG
Test System:EVERFINE GO-2000B_V1 SYSTEM V2.0.406.11
Humidity:65.0%
Test Distance:8.000m [K=0.7063]
Remarks:

UTILIZATION FACTORS TABLE

Test:U:24.000V I:0.4210A P:10.104W PF:1.0000 Freq:50.00Hz Lamp Flux:415.277x1 lm		
NAME: 1414-DKB120.96.3K	TYPE:LED	
MFR.: Lightrail		

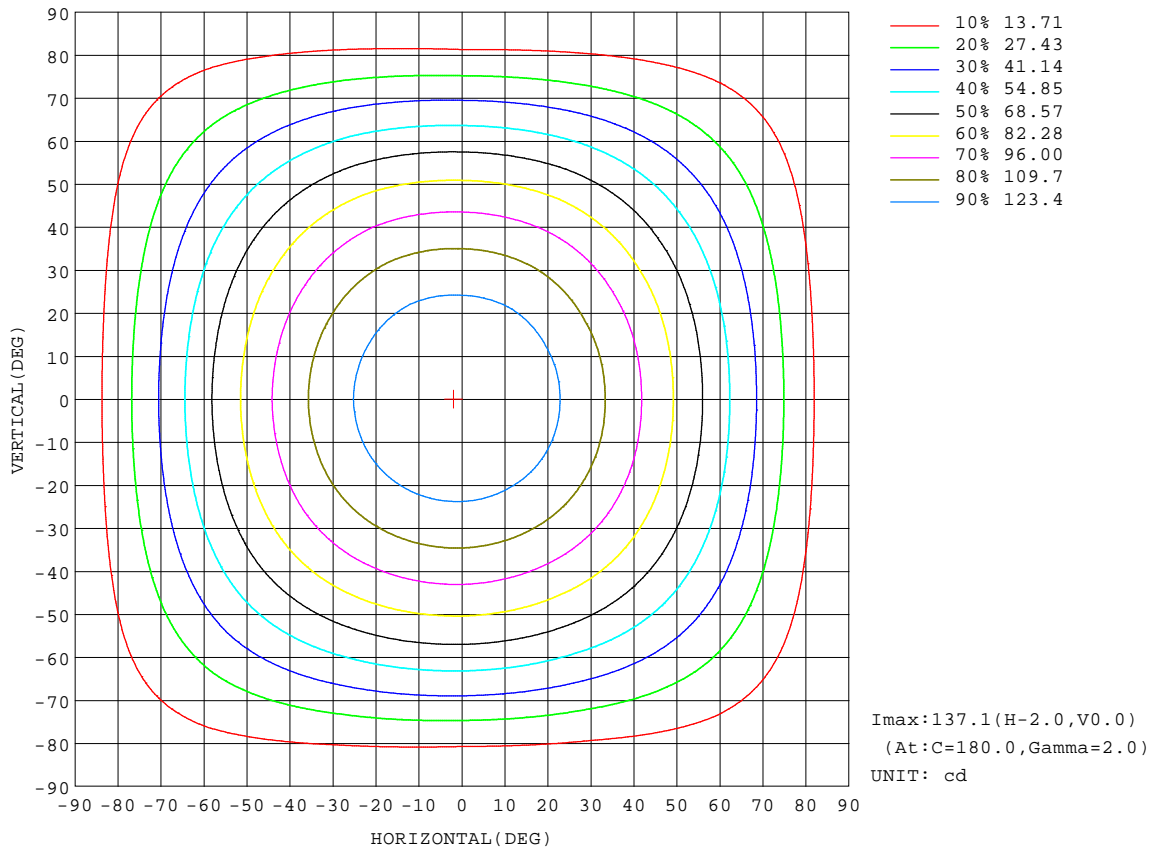
REFLECTANCE										
Ceiling	0.8	0.8	0.8	0.7	0.7	0.7	0.5	0.5	0.5	0
Walls	0.7	0.5	0.3	0.7	0.5	0.3	0.7	0.5	0.3	0
Working plane	0.2	0.2	0.2	0.2	0.2	0.2	0.2	0.2	0.2	0
ROOM INDEX	UTILIZATION FACTORS(PERCENT) $k(RI) \times RCR = 5$									
k = 0.60	56	44	37	55	44	37	54	43	37	30
0.80	66	54	47	65	54	46	63	53	46	39
1.00	74	63	56	73	62	55	70	63	54	47
1.25	81	71	63	80	70	63	77	68	62	54
1.50	86	76	69	85	75	68	81	73	67	59
2.00	93	85	78	91	83	77	87	81	75	67
2.50	97	89	83	95	88	82	91	85	80	71
3.00	101	94	88	98	92	87	94	89	84	75
4.00	105	99	94	102	97	92	97	93	89	80
5.00	107	102	98	105	100	96	100	96	93	83
ROOM INDEX	UF(total)									Direct
According to DIN EN 13032-2 2004			Suspended				SHRNOM = 1.25			

C Range: 0 - 360DEG
C Interval: 30.0DEG
Test Speed: HIGH
Temperature:25.3DEG
Operators:DAMIN
Test Date:2020-08-13

γ Range: 0 - 180DEG
 γ Interval: 1.0DEG
Test System:EVERFINE GO-2000B_V1 SYSTEM V2.0.406.11
Humidity:65.0%
Test Distance:8.000m [K=0.7063]
Remarks:

ISOCANDELA DIAGRAM

Test:U:24.000V I:0.4210A P:10.104W PF:1.0000 Freq:50.00Hz Lamp Flux:415.277x1 lm		
NAME: 1414-DKB120.96.3K	TYPE:LED	
MFR.: Lightrail		



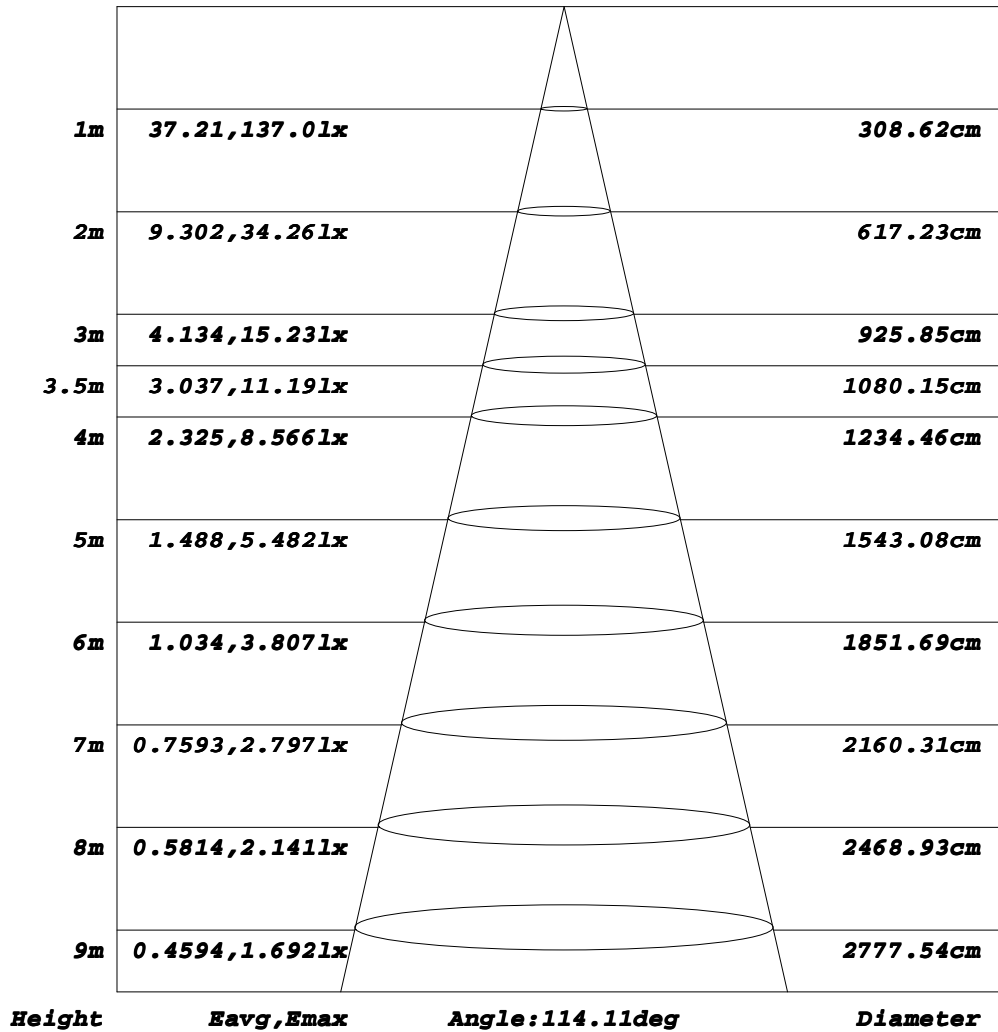
C Range: 0 - 360DEG
C Interval: 30.0DEG
Test Speed: HIGH
Temperature: 25.3DEG
Operators: DAMIN
Test Date: 2020-08-13

γ Range: 0 - 180DEG
γ Interval: 1.0DEG
Test System: EVERFINE GO-2000B_V1 SYSTEM V2.0.406.11
Humidity: 65.0%
Test Distance: 8.000m [K=0.7063]
Remarks:

AAI Figure

Test:U:24.000V I:0.4210A P:10.104W PF:1.0000 Freq:50.00Hz Lamp Flux:415.277x1 lm		
NAME: 1414-DKB120.96.3K	TYPE:LED	
MFR.: Lightrail		

Flux out:299.4 lm



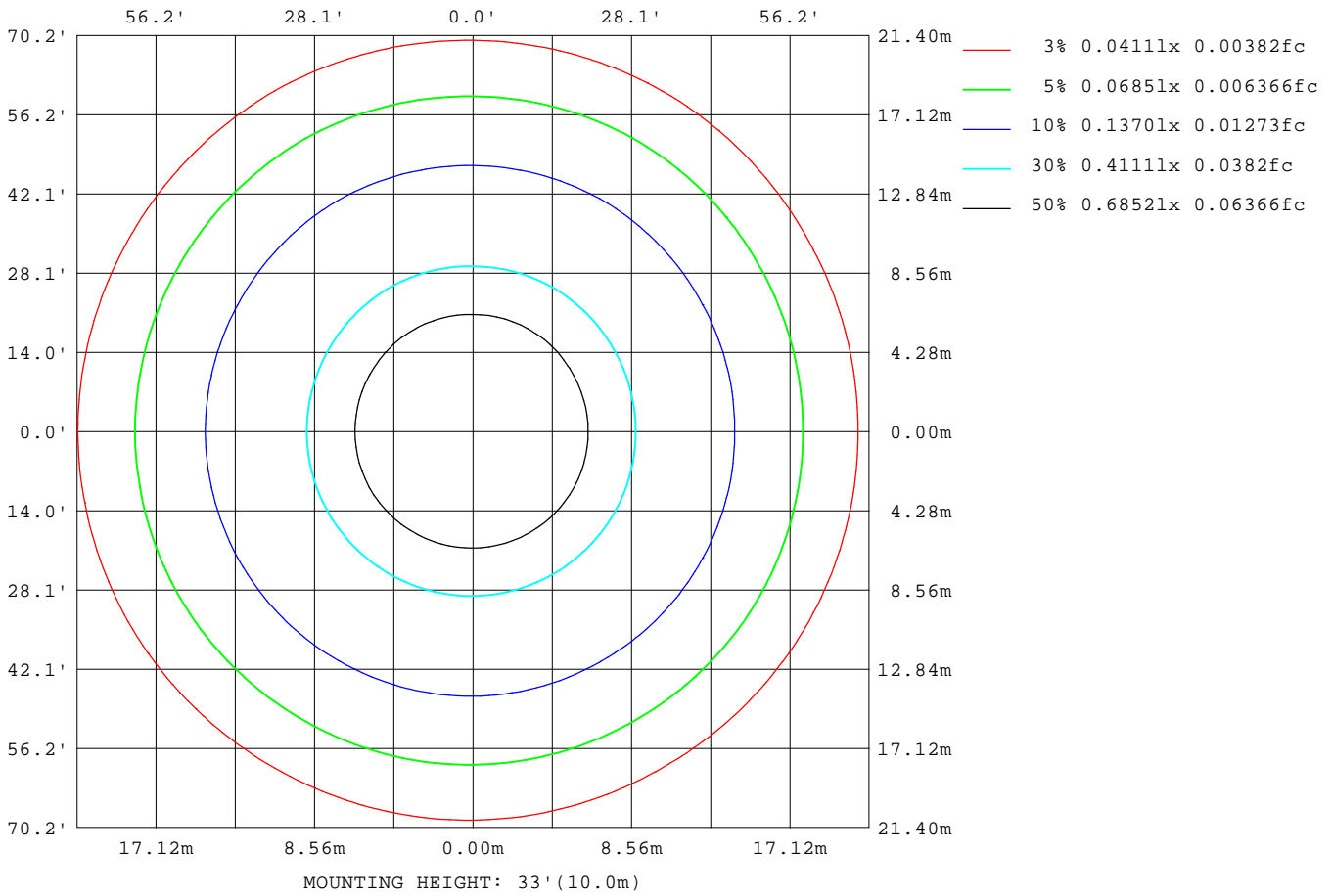
Note: The Curves indicate the illuminated area and the average illumination when the luminaire is at different distance.

C Range: 0 - 360DEG
C Interval: 30.0DEG
Test Speed: HIGH
Temperature: 25.3DEG
Operators: DAMIN
Test Date: 2020-08-13

γ Range: 0 - 180DEG
γ Interval: 1.0DEG
Test System: EVERFINE GO-2000B_V1 SYSTEM V2.0.406.11
Humidity: 65.0%
Test Distance: 8.000m [K=0.7063]
Remarks:

ISOLUX DIAGRAM

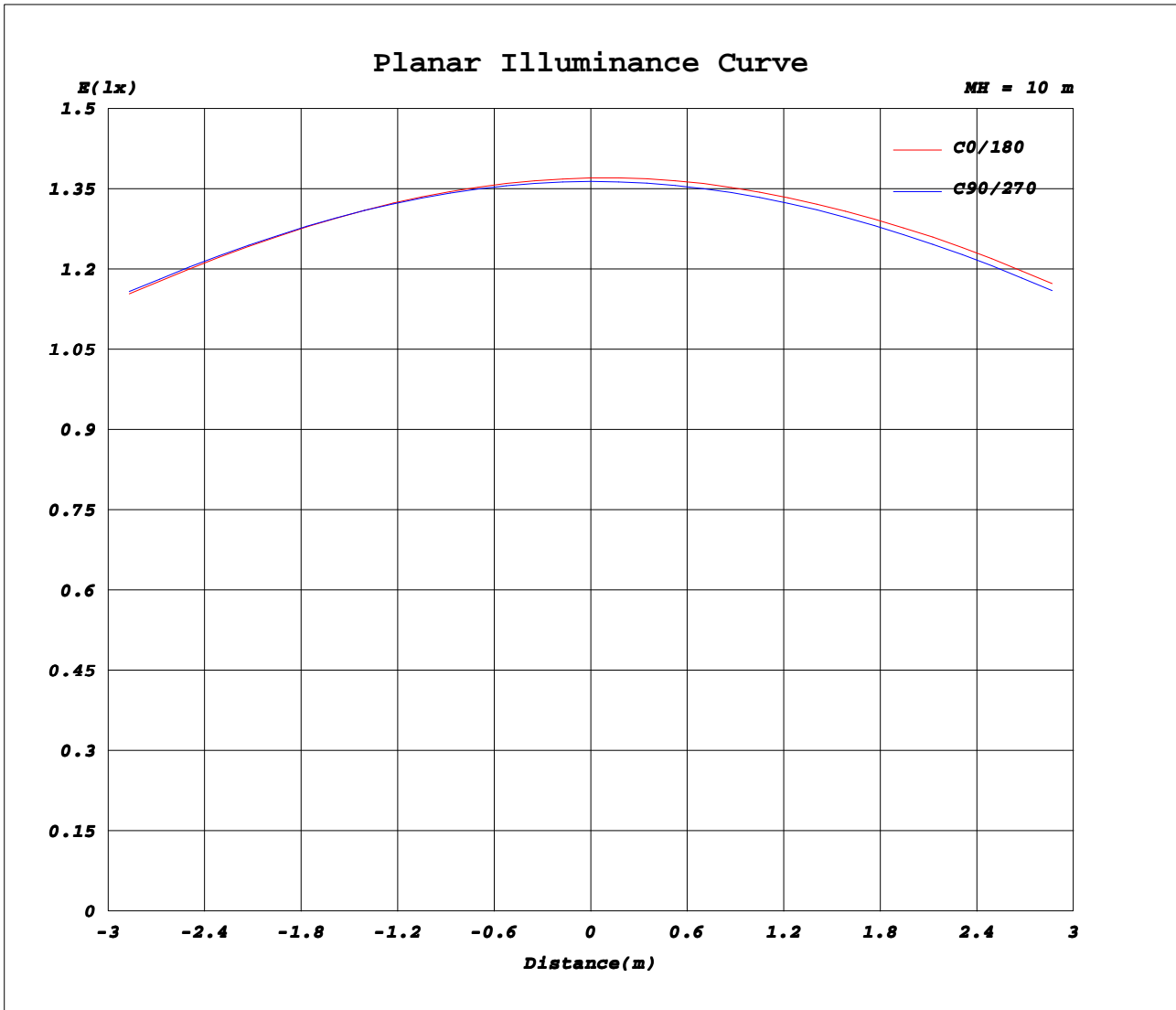
Test:U:24.000V I:0.4210A P:10.104W PF:1.0000 Freq:50.00Hz Lamp Flux:415.277x1 lm		
NAME: 1414-DKB120.96.3K	TYPE:LED	
MFR.: Lightrail		



C Range: 0 - 360DEG
C Interval: 30.0DEG
Test Speed: HIGH
Temperature: 25.3DEG
Operators: DAMIN
Test Date: 2020-08-13

γ Range: 0 - 180DEG
γ Interval: 1.0DEG
Test System: EVERFINE GO-2000B_V1 SYSTEM V2.0.406.11
Humidity: 65.0%
Test Distance: 8.000m [K=0.7063]
Remarks:

Planar Illuminance Curve



C Range: 0 - 360DEG
C Interval: 30.0DEG
Test Speed: HIGH
Temperature: 25.3DEG
Operators: DAMIN
Test Date: 2020-08-13

γ Range: 0 - 180DEG
γ Interval: 1.0DEG
Test System: EVERFINE GO-2000B_V1 SYSTEM V2.0.406.11
Humidity: 65.0%
Test Distance: 8.000m [K=0.7063]
Remarks:

LUMINOUS DISTRIBUTION INTENSITY DATA

Test:U:24.000V I:0.4210A P:10.104W PF:1.0000 Freq:50.00Hz Lamp Flux:415.277x1 lm		
NAME: 1414-DKB120.96.3K	TYPE:LED	
MFR.: Lightrail		

Table--1

UNIT: cd

C(DEG) γ (DEG)	0	30	60	90	120	150	180	210	240	270	300	330							
0	137	137	136	136	136	137	137	137	136	136	136	137							
5	136	136	136	136	136	136	137	136	136	136	136	136							
10	134	134	134	134	134	135	135	135	135	134	134	134							
15	131	131	131	131	132	132	133	132	132	131	131	131							
20	126	126	127	127	128	128	129	128	128	127	127	126							
25	121	121	121	122	123	123	124	123	123	123	122	121							
30	114	115	115	116	117	117	118	117	118	117	116	115							
35	107	108	108	109	110	110	111	111	111	110	109	107							
40	99.0	99.6	100	101	102	103	103	103	103	102	101	99.5							
45	90.2	90.8	91.4	92.6	93.2	94.0	94.5	94.2	94.6	93.3	92.6	90.7							
50	80.6	81.2	81.8	83.1	83.8	84.7	85.3	84.9	85.4	83.9	83.3	81.2							
55	70.6	71.1	71.6	72.9	73.6	74.6	75.1	74.8	75.1	73.8	73.0	71.1							
60	59.9	60.3	60.7	62.0	62.8	64.0	64.6	64.2	64.4	63.0	62.2	60.4							
65	48.9	49.3	49.4	50.6	51.5	52.9	53.6	53.3	53.1	51.7	51.0	49.5							
70	37.9	38.1	37.7	38.7	39.8	41.7	42.4	42.0	41.4	39.9	39.3	38.3							
75	27.1	27.1	26.1	26.7	28.1	30.4	31.3	30.7	29.7	27.9	27.7	27.3							
80	17.0	16.9	15.2	15.3	16.8	19.7	20.8	20.0	18.5	16.4	16.8	17.1							
85	8.74	8.23	6.47	5.84	7.58	10.2	11.4	10.5	8.89	6.77	7.75	8.54							
90	4.07	3.51	2.05	1.06	1.76	3.29	4.27	3.65	2.39	1.36	2.55	3.49							
95	2.58	2.24	1.43	1.18	1.17	1.33	1.72	1.59	1.34	1.33	1.63	2.32							
100	1.96	1.78	1.34	1.32	1.30	1.29	1.45	1.45	1.45	1.44	1.46	1.93							
105	1.67	1.57	1.48	1.47	1.45	1.43	1.57	1.57	1.58	1.56	1.55	1.68							
110	1.64	1.63	1.63	1.62	1.59	1.58	1.69	1.70	1.71	1.69	1.68	1.71							
115	1.77	1.78	1.77	1.77	1.75	1.74	1.84	1.84	1.85	1.83	1.82	1.84							
120	1.94	1.93	1.91	1.92	1.91	1.90	1.97	1.98	1.98	1.97	1.95	1.98							
125	2.10	2.08	2.06	2.08	2.07	2.07	2.12	2.13	2.13	2.10	2.08	2.12							
130	2.26	2.24	2.21	2.23	2.24	2.23	2.25	2.27	2.27	2.23	2.21	2.25							
135	2.41	2.39	2.36	2.38	2.40	2.39	2.39	2.40	2.40	2.37	2.34	2.38							
140	2.56	2.53	2.51	2.53	2.55	2.54	2.52	2.54	2.54	2.51	2.47	2.51							
145	2.70	2.67	2.65	2.68	2.70	2.69	2.64	2.67	2.67	2.65	2.61	2.63							
150	2.84	2.80	2.79	2.83	2.84	2.83	2.77	2.80	2.81	2.79	2.75	2.76							
155	2.97	2.93	2.93	2.97	2.98	2.96	2.91	2.92	2.94	2.92	2.88	2.88							
160	3.10	3.06	3.07	3.10	3.11	3.08	3.03	3.04	3.07	3.05	3.02	3.00							
165	3.19	3.17	3.19	3.22	3.21	3.19	3.14	3.14	3.18	3.16	3.14	3.11							
170	3.26	3.25	3.27	3.30	3.30	3.27	3.22	3.22	3.26	3.25	3.23	3.20							
175	3.31	3.30	3.34	3.36	3.35	3.32	3.30	3.29	3.34	3.33	3.32	3.28							
180	3.33	3.33	3.37	3.39	3.37	3.34	3.34	3.33	3.39	3.38	3.38	3.34							

C Range: 0 - 360DEG
C Interval: 30.0DEG
Test Speed: HIGH
Temperature:25.3DEG
Operators:DAMIN
Test Date:2020-08-13

γ Range: 0 - 180DEG
γ Interval: 1.0DEG
Test System:EVERFINE GO-2000B_V1 SYSTEM V2.0.406.11
Humidity:65.0%
Test Distance:8.000m [K=0.7063]
Remarks: