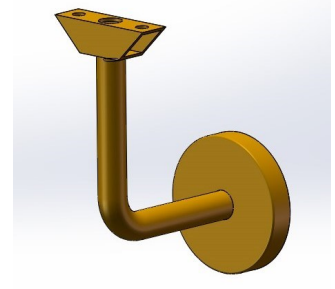
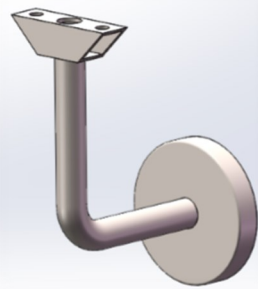
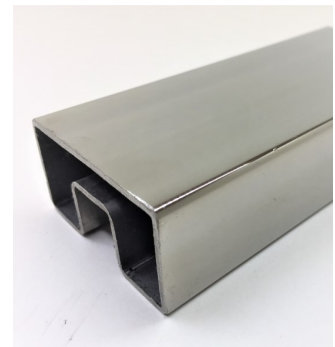
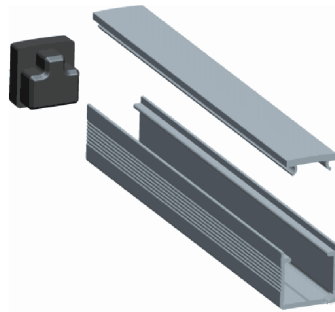
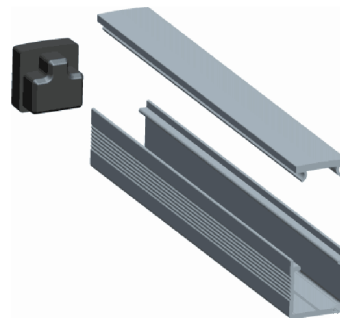
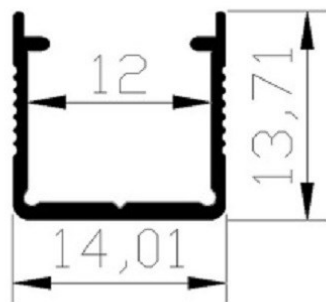


ILLUMINATED LED HANDRAIL COMPONENTRY



LIGHTRAIL 1414 LED PROFILE INSERT

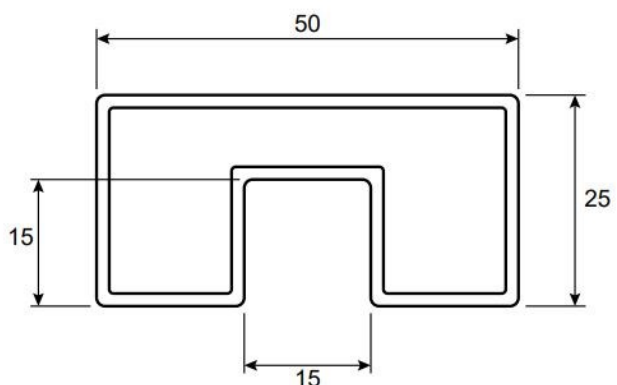
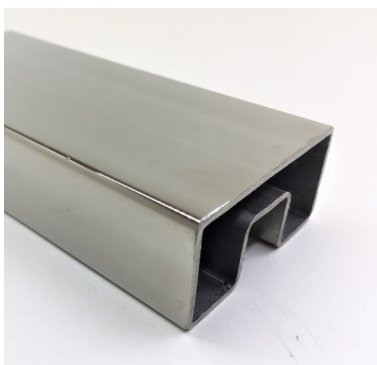
In 2008 the first Lightrail LED handrail system was made from custom aluminium tube. From there the demand for a stainless steel LED handrail began to grow and as a result the Lightrail 1414 LED profile insert was created.



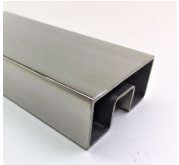
The 1414 is designed to fit inside standard stainless steel tube with a 15x15mm slot which enables the supply of LED handrail as componentry only.

The componentry only option immediately eliminates the need for a specific installation team and allows the builder to use their own contractors which not only reduces costs but also lead times.

This profile can accommodate LED strips with PCB up to 10mm wide , has a vandal resistant polycarbonate diffuser and is rated at IP54 with sealed end caps. LED strips inside also IP rated where required up to IP65. When used in conjunction with Lightrail LED strips of 120 LED/m or more, a clean, dot free, continuous lighting effect is achieved.



LIGHTRAIL SS5025 COMPONENTRY – 316 STAINLESS STEEL SATIN FINISH AS STANDARD OR POLISHED OPTION



SS5025.58S Stainless steel slotted tube satin 5.8m suit Lightrail 1414

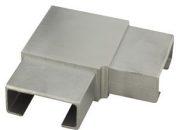
SS5025.29S Stainless steel slotted tube satin 2.9m suit Lightrail 1414



SS5025-ECS Stainless steel slotted end cap satin suit Lightrail SS5025



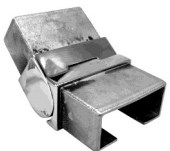
SS5025-JS Stainless steel slotted joiner satin suit Lightrail SS5025



SS5025-E90S Stainless steel slotted elbow 90deg suit Lightrail SS5025



SS5025-EH90S S/steel elbow adjustable horizontal 90deg suit Lightrail SS5025



SS5025-EV90S S/steel elbow adjustable vertical 90deg suit Lightrail SS5025



SS5025-WBS S/steel wall bracket suit Lightrail SS5025



LIGHTRAIL SS5025 COMPONENTRY – 316 STAINLESS STEEL SATIN BLACK OR CUSTOM



SS5025.58SB S/steel slotted tube satin black 5.8m suit Lightrail 1414

SS5025.29SB S/ steel slotted tube satin black 2.9m suit Lightrail 1414



SS5025-ECSB Stainless steel slotted end cap satin suit Lightrail SS5025



SS5025-JSB S/steel slotted joiner satin black suit Lightrail SS5025



SS5025-E90SB S/steel elbow 90deg satin black suit Lightrail SS5025



SS5025-EH90SB S/steel elbow adjustable horizontal black 90deg suit Lightrail SS5025

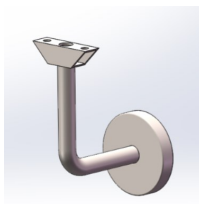


SS5025-EV90SB S/steel elbow adjustable vertical black 90deg suit Lightrail SS5025



SS5025-WBSB S/steel wall bracket black suit Lightrail SS5025

LIGHTRAIL COMPONENTRY – BRACKETS



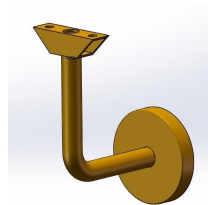
SSABS Albion bracket solid 316 stainless steel (satin)

SSABH Albion bracket hollow 316 stainless steel (satin)



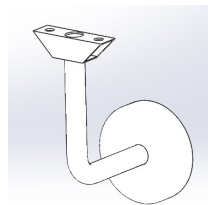
SSABS-MB Albion bracket solid 316 stainless steel matt black

SSABH-MB Albion bracket hollow 316 stainless steel matt black



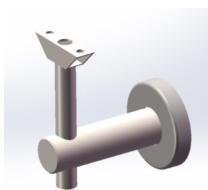
SSABS-SB Albion bracket solid 316 stainless steel satin brass

SSABH-SB Albion bracket hollow 316 stainless steel satin brass



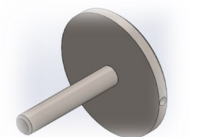
SSABS-MW Albion bracket solid 316 stainless steel matt white

SSABH-MW Albion bracket hollow 316 stainless steel matt white

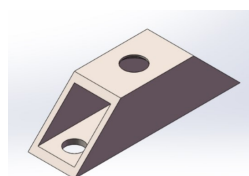


SSCBS Chifley bracket solid 316 stainless steel (satin)

SSCBH Chifley bracket hollow 316 stainless steel (satin)

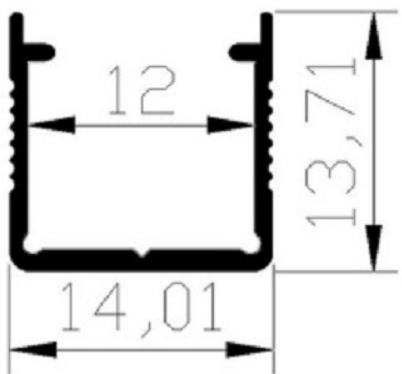
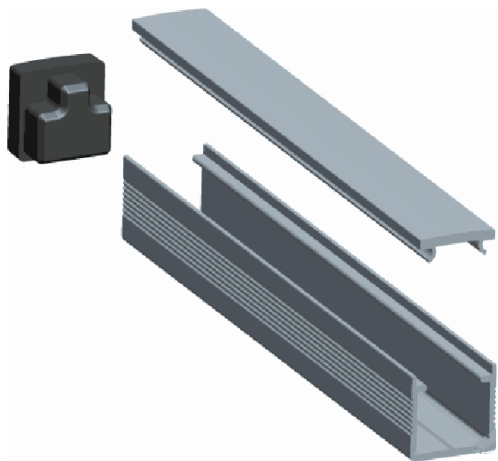


SSGACA Glass adaptor to suit Lightrail Albion and Chifley brackets



1414MB Mounting block supplied with Albion and Chifley brackets. also supplied separately if required

LIGHTRAIL SS5025 COMPONENTRY – 1414 LED PROFILE

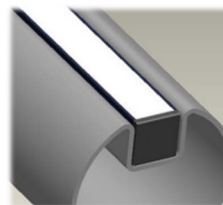


1414OPP25 Lightrail LED profile 14x14x2500mm with opal PC diffuser

1414ECO End cap open suit Lightrail 1414

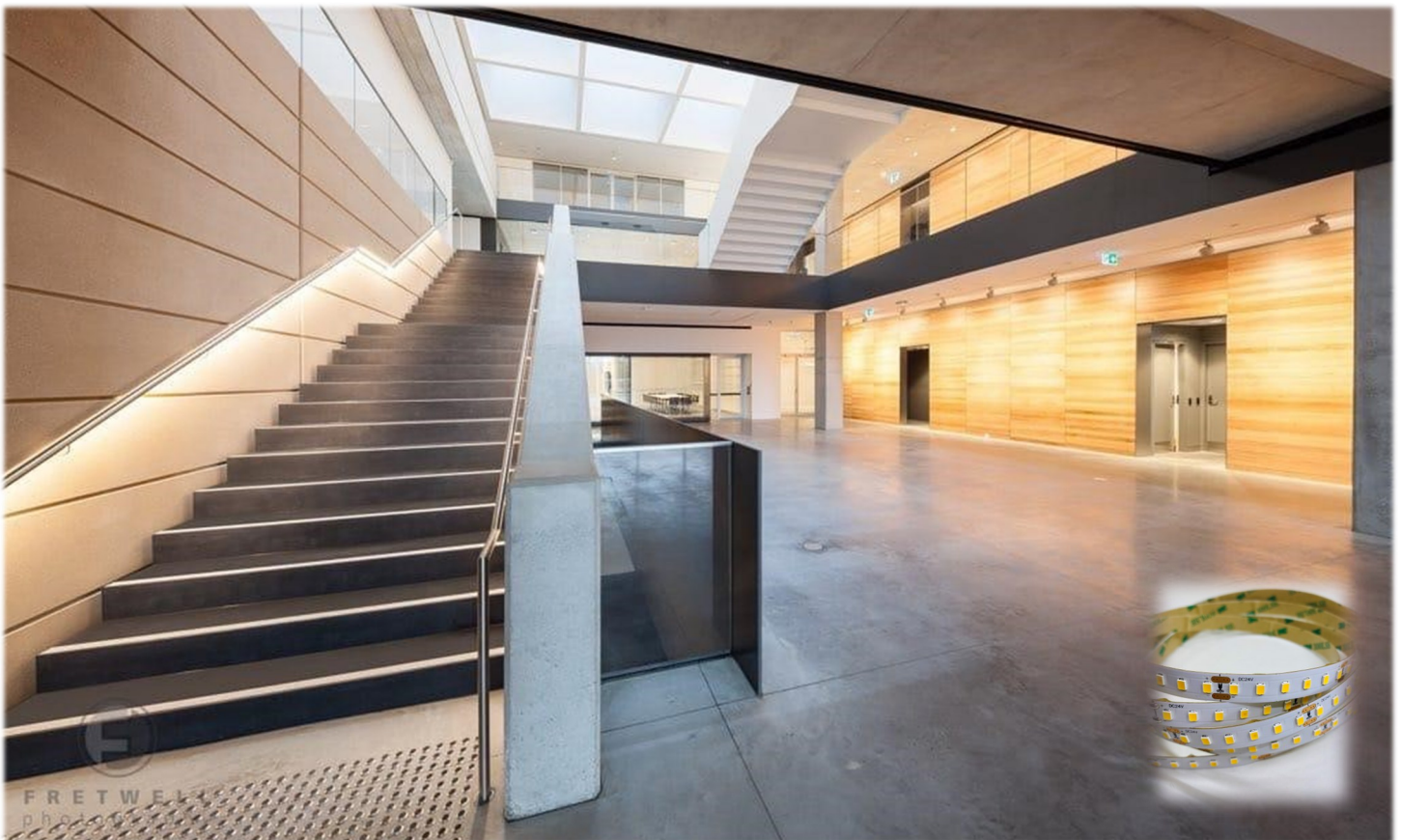
1414ECO End cap closed suit Lightrail 1414

1414DIFF Diffuser only suit Lightrail 1414



SS5025 + STB120 24v 15w SAMSUNG IP20 or IP65

For commercial projects you can feel comfortable that the Lightrail Samsung 15w LED strip will provide light levels required with high efficiency of around 125lm/w . Much like the DKB120 9.6w strip, it remains stable with the chip itself only being run at around one third of its capacity which is peace of mind for long operating hours. The IC control integration enables a run of up to 10m powered from one end which reduces the need for LED drivers and power entry points.



CODE	V	W	LED/m	COL TEMP	STRIP LUMEN/M	MAX LENGTH
STB20-27K	24	15	120	2700K	1900	10m
STB120-3K	24	15	120	3000K	1925	10m
STB120-4K	24	15	120	4000K	1950	10m
STB120-65K	24	15	120	6500K	2050	10m



SS5025 + DKB120 24v 9.6w IP20 or IP65

For domestic projects the use of DKB120 9.6w LED strip is the perfect choice for a “not too bright “ but “ not too low” light level. This option is also used in commercial applications when the LED handrail is used for effect only or where the handrail is not the primary source of light. This LED strip now has IC control integrated to the LED chip enabling a run of up to 25m powered from one end which reduces the need for LED drivers and power entry points.



CODE	V	W	LED/m	COL TEMP	STRIP LUMEN/M	MAX LENGTH
DKB120-27K	24	9.6	120	2700K	750	25m
DKB120-3K	24	9.6	120	3000K	780	25m
DKB120-4K	24	9.6	120	4000K	800	25m
DKB120-65K	24	9.6	120	6500K	820	25m

Also available in 4.8w, 12w & 14w. Please refer to separate data sheet for more detail on DKB120